

EVO3™

MID PEAK - SLIP RATCHET - VENTILATED

EVO3™ IS A TRUE EVOLUTION OF THE LONG ESTABLISHED MK2 & MK3 HELMETS

TECHNICAL SPECIFICATION

HEAD PROTECTION

INSTRUCTIONS FOR USE

Fit helmet on head and fasten strap to ensure fit

For adequate protection this helmet must be worn with peak facing forward

Ensure the helmet is adjusted to the size of the user's head

SHELL:
High Density Polyethylene (HDPE)

CHAMLON™ SWEATBAND:

Egyptian cotton core with porous PU coating for maximum sweat absorption. PH neutral, dermatologically tested

WEBBING HARNESS:

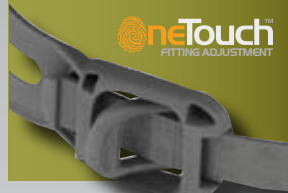
HDPE Strap & Webbing Clips with Polyester Webbing Straps



SLIP RATCHET:

One Touch™ Slip Ratchet version of the EVO3™ is so simple to fit that it can be adjusted with just one finger

oneTouch™
FITTING ADJUSTMENT



CLEANING & MAINTENANCE

The unit may be cleaned with soap and warm water and dried with a soft cloth

The helmet should not be cleaned with chemical or abrasive cleaners

The helmet should be stored out of direct sunlight

The helmet should be stored away from chemicals and extremes of temperature

CONFORMITY

Conforms to EN397, N50365 & ANSI Z89

EN 50365 for Helmets for use in low voltage installations

EC Certificate Number 0279, issued by BSI Product Certification

Meets the retro reflective performance requirements of EN12899 when fitted with CR2 Reflective kit

Meets optional Molten Metal Splash performance

Wide size range. Slip or wheel ratchet - High comfort fit

Available vented or unvented. Available with mid or micro peak

Company personalisation available by printing



MANUFACTURING FOR SAFETY
WWW.JSP.CO.UK



UKSALES@JSP.CO.UK
TEL: +44 (0)1993 826050



EVO3™

MID PEAK - SLIP RATCHET - VENTILATED

EVO3™ IS A TRUE EVOLUTION OF THE LONG ESTABLISHED MK2 & MK3 HELMETS

TECHNICAL SPECIFICATION

HEAD PROTECTION



DIMENSIONS OF OUTER PACKAGING

Quantity: 10

Weight: 3.8kg (Approx)



HEIGHT:
450mm

WIDTH:
240mm

LENGTH:
580mm

HELMET FEATURES

EN STANDARD	EN397 EN50365	Yes Yes
PERFORMANCE	Impact Resistance Electrical Insulation	Yes 50 Joules EN50365 1000V
TEMPERATURE RESISTANCE	-30°C	Yes
SHELL MATERIAL	HDPE Recyclable	Yes Yes
HARNESS MATERIAL	HDPE Textile	Yes Yes
OPTIONS	Universal Accesories Reflective CR2 option Ventilated Integrated Eyewear	Yes Yes Yes Yes
HARNESS SYSTEM OPTIONS	JSP 3D Slip Ratchet 6 pts	Yes Yes Yes
CHINSTRAP	4 pts	Yes
LOGO OPTIONS	Front Rear Side MOQ Logo Individual Name	Yes Yes Yes 10 Yes

DIMENSIONS OF HELMET

Size: 530 - 640mm

Weight: 375g (Approx)

HELMET COLOURS



01 White 02 Yellow 03 Green 05 Blue 06 Red 08 Orange

LIMITATIONS OF USE

Protection will only be offered if the helmet is fitted correctly

Any helmet subjected to severe impact should be replaced immediately. Do not apply paint, solvents or adhesive labels except in accordance with instructions from the manufacturer

The harness, when in contact with the skin may cause allergic reactions to susceptible individuals. If this occurs leave the hazard area, remove the helmet and seek medical advice

The attention of users is also drawn to the dangers of modifying or removing any of the original component parts, other than as recommended by the manufacturer



