

Electronic Scale Reducer Installation Manual

Thank you for purchasing your Electronic Scale Reducer.

CONTENTS OF THIS PACK

1. Computer controlled box with red L.E.D. 'functioning' lights, fixing screws.
2. Aerial wire with two push in plugs.
3. Plug in, low voltage adaptor with 1.7 metres of low voltage wire and push in connector.
4. Four cable ties to fix around pipe and ends of signal coil.
5. Location - Installation - Guarantee booklet.

OPTIONAL EXTRA KIT (NOT SUPPLIED)

Five metre extension cable with male and female connection to extend item 3 on low voltage side.

For more information, please contact 01376 334 200.

BWT (UK) Limited

Unit F, Warners Mill, Silks Way, Braintree, Essex, CM7 3GB

Tel: 01376 334 200 **Fax:** 01376 334 201

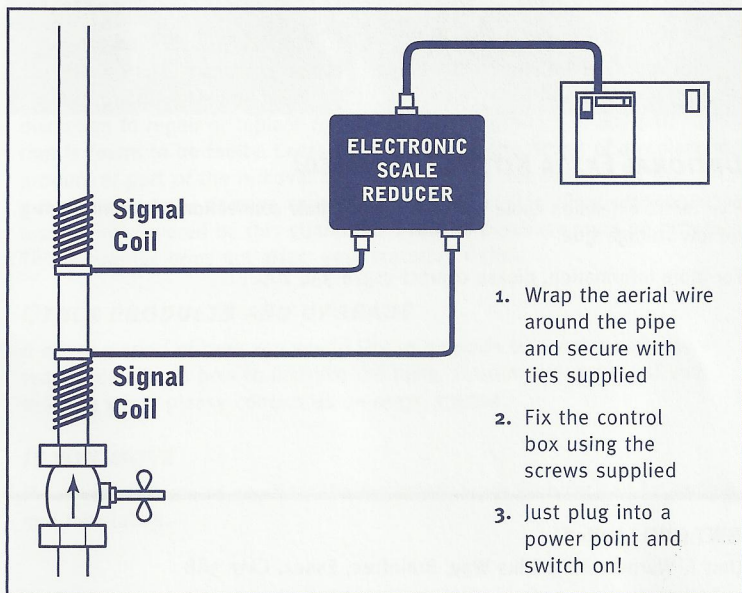
WHERE TO LOCATE YOUR ELECTRONIC SCALE REDUCER

INHIBITING SCALE BUILD-UP IN THE HOME

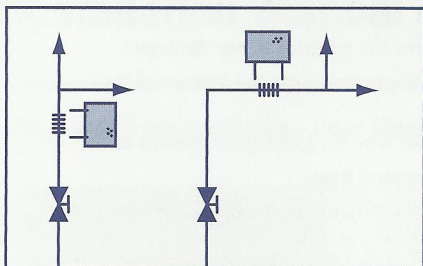
When used to inhibit scale build-up, the Electronic Scale Reducer needs to be installed either on the incoming main where whole house protection is required or on pipe-work supplying particular areas e.g. combination boilers, water heaters, electric showers

The signal coil can be fitted to vertical, horizontal or any angle pipe work up to 35mm external diameter (See Location Options on following page).

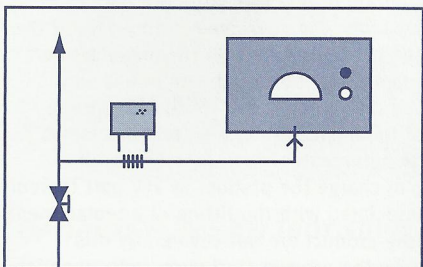
The Electronic Scale Reducer is ideal for domestic applications having either 15mm or 22mm mains or tank fed supply.



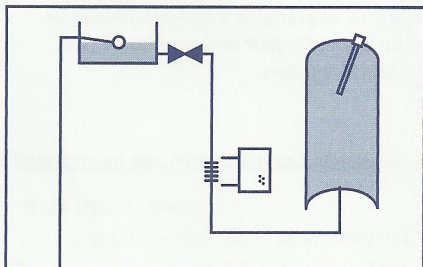
LOCATION OPTIONS



Incoming Rising Main Supply



Individual Appliances only



Hot Water System only

Note

- Do not install on lead piping.
- Do not locate the signal coil adjacent to pipe fittings, elbows or stop-cocks.
- Allow at least 28mm or more if possible.

Important Note

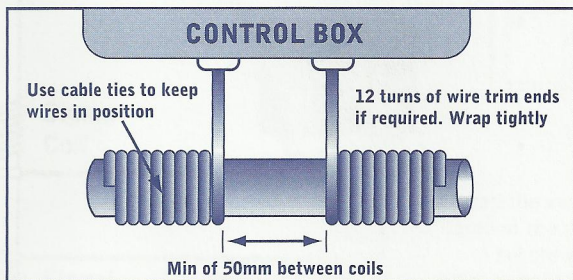
The Electronic Scale Reducer is to be installed in a dry environment only and must not be submerged in water.

To achieve this we recommended that the unit and power supply only be installed indoors.

INSTALLATION

Wrap the antenna around the water pipe you wish to protect. The antenna can be wrapped in either a clockwise, or anti-clockwise direction. Use the four cable ties provided to secure the antenna (electrical insulating tape can be used if required).

1. The Electronic Scale Reducer should be left on at all times and must be installed in accordance with all appropriate building, water and electrical regulations. The pipe-work may be either horizontal or vertical and can be made of any material (EXCEPT LEAD) suitable for supplying water.
2. Fix the Electronic Scale Reducer control box in an appropriate position (using the screws supplied). Ensure the control box is within a suitable distance of the pipe selected. Install in an area where the Electronic Scale Reducer will not come into direct contact with water.
3. We recommend that each of the antennas be wrapped around the pipe (see diagram below) leaving a minimum of 50mm between the two coils. You can trim the ends of the antenna if required, but we recommend a minimum of 12 turns for each of the coils. The coils can be wrapped in either a clockwise or anti-clockwise direction.



4. The mains plug should be plugged into a fused and switched plug socket supply (230V, 50Hz).
5. Switch on the power to the Electronic Scale Reducer at the plug socket. The band of lights on the front of the control box will illuminate. This indicates that the Electronic Scale Reducer is receiving power from the mains supply. In the event of an interruption to the power supply, Electronic Scale Reducer will automatically reset itself once the power is restored.

WHAT TO EXPECT FROM YOUR ELECTRONIC SCALE REDUCER

The two aerial wires with plug in connectors should be pushed into the sockets on the base of the Reducer.

HARD WATER SCALING

Scale forms when hard water is heated. As the Electronic Scale Reducer does not soften the water, results are not always immediately apparent.

Over a period of time scale build-up will become less prevalent and in many cases will be rinsed away by the flowing water.

SCALE IN THE KETTLE

The kettle is a 'captive environment' and as such any water or scale deposits left behind should be emptied and rinsed out on a daily basis.

All Trademarks are protected under European Law and must not be reproduced by third parties without express permission of BWT in writing. As part of BWT's policy of constant product development, BWT reserves the right to alter product specifications without prior notice.

CHECKLIST

1. No red lights at the control box:

- Check low voltage wire to ensure the adaptor is not damaged.
- Check that socket connector is fully pushed into the bottom of the control box.
- (If fitted) Check connections and wire on 5 metre extension kit.

2. Red lights do not sequence on control box:

- Check that the two aerial wire sockets are correctly pushed in to the two sockets on the base of the control box.

GUARANTEE

This product is guaranteed for the period of one year from the date of purchase against any manufacturing fault. The guarantee is only valid if the product has been installed and used in accordance with the manufacturers instructions and has not been dismantled or interfered with in any way. Damage caused to the product or by the product as a result of failure to use the product in accordance with the manufacturers instructions is not covered by this guarantee. Under this guarantee we undertake at our discretion to repair or replace free of charge the product or any part thereof that is found to be faulty. Costs associated with the fitting of a replacement product or part or the removal of the product are not covered by this guarantee. Loss or damage caused by the product (including consequential loss) is not covered by this guarantee. Proof of purchase must be provided. This guarantee does not affect your statutory rights.

OTHER PRODUCTS AND UPGRADE

If over a period of time you would like to upgrade to a water softener or require details on how to improve the taste, flavour and quality of your drinking water please contact us on **01376 334200**.

IF YOU MOVE

If you move house at any time the Electronic Scale Reducer can be removed and reinstalled.