

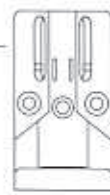
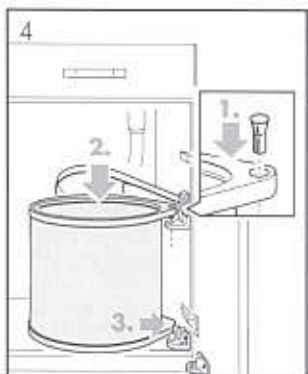
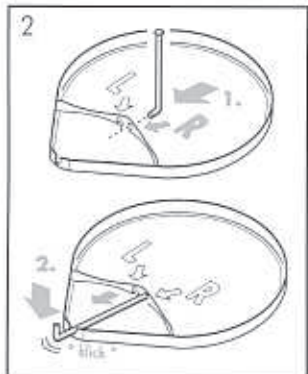
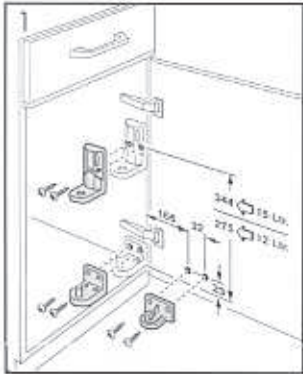


Punkt für Punkt  
praktischer

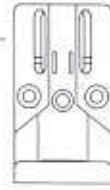
# MONO AS 3512/3515

Montageanleitung  
Mounting Instruction  
Instructions de montage  
Montageinstructies  
Istruzioni inerenti il montaggio  
Instrucciones de Montaje

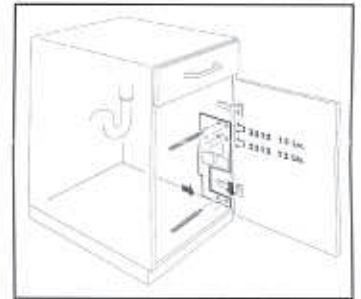
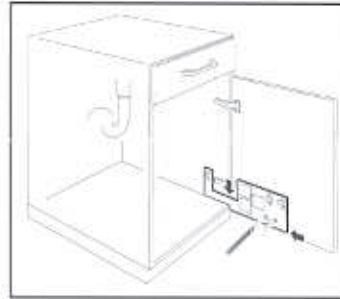
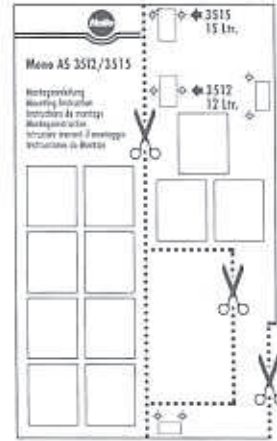
Rechte Seite • Right hand side • Côté droit • Rechter Kant  
Lato destro • Lado derecho



3515  
15 Ltr.



3512  
12 Ltr.



Nobi

