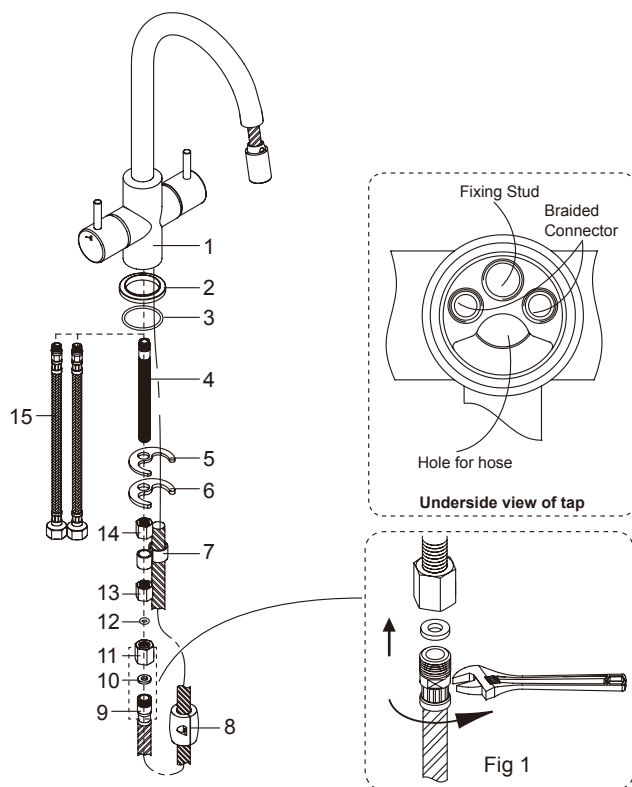




Fitting Instructions

Mono Sink Mixer with Pull-out Spray



PARTS SUPPLIED

ITEM	DESCRIPTION	QTY
1	Tap Body	1
2	Flange	1
3	Anti-Rotational Washer	1
4	Fixing Stud	1
5	Rubber Horseshoe Washer	1
6	Metal Horseshoe Washer	1
7	Hose Retainer	1
8	Counter Balance Weight	1

ITEM	DESCRIPTION	QTY
9	Pull-out Hose	1
10	Sealing Washer	1
11	Adaptor	1
12	O Ring	1
13	Thick Fixing Nut	1
14	Thin Fixing Nut	1
15	Braided Connectors	2

BEFORE YOU START

This tap is suitable for use at water supply pressures of 1 bar (min.) to 5 bar (max.).

This product must be connected to water supply in accordance with the Water Supply (Water Fittings) Regulations 1999, and also to comply with UK Building Regulations. If you are in any doubt about these requirements, contact a qualified plumber, your local Water Company or the Water Regulations Advisory Service (WRAS).

- Identify all components and check pack contents.
- TURN OFF WATER MAINS SUPPLY. The mains stopcock is usually situated where the supply enters the building.
- It is also recommended that the water heating arrangements are turned off.
- Isolate the hot and cold water supply.

Warning from your Water Supplier

This type of tap will not maintain an appropriate tap gap, because part of the tap assembly (the hose attachment) can fall below the spill over level of the sink. Therefore it must not be directly connected to the drinking water supply without the protection of an appropriate backflow arrangement, as agreed by your local water supplier. If the tap assembly is required to be fed from storage, this tap may require a water pressure higher than that provided by a normal storage gravity fed system (e.g. typical gravity fed system - 0.5 bar). If boosting/pumping of the system is required advance notification to the local water supplier may be required. The tap assembly must only be supplied via a wholesome source of water (hot and cold supplies). It is important to ensure that this tap is connected in accordance with the Water Supply (Water Fittings) Regulations (Byelaws in Scotland).

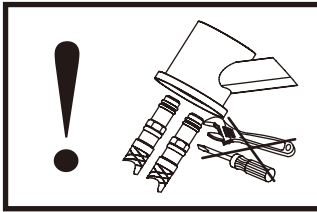
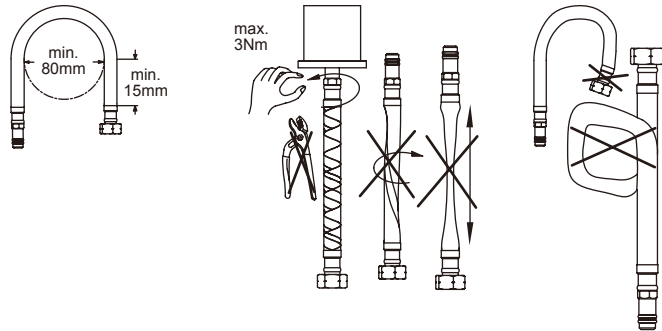
SAFETY

CAUTION: DO NOT overtighten the fixings otherwise it may damage the product.

CAUTION: Always ensure the product is securely installed before use.

When the installation is complete, turn the water supply on and check for leaks on connection points.

Failure to follow these instructions may result in personal injury, damage to the product and property damage.



INSTALLATION

1. Screw Fixing Stud(4) to the Tap Body(1) and tighten.
2. Ensure that the Anti_Rotational Washer(3) is fitted to the Flange(2). Fit Flange(2) with Anti_Rotational Washer(3) to the Tap Body(1), Pull_out Hose(9) must be through the hole of the Flange(2).
3. Screw 2x Braided Connectors(15) to Tap Body(1) through the hole of the Flange(2) by hand.
4. Locate the tap assembly down through the hole of the sink.
5. Fit Rubber Washer(5) and Metal Washer(6) onto the threaded of the Fixing Stud(4), then fit Thick Fixing Nut(14) onto Fixing Stud(4). **DO NOT OVER TIGHTEN.**
6. Fit Hose Retainer(7) over the Pull-out Hose(9) and Fixing Stud(4), secure this into position using the Thin Fixing Nut(13).
7. Ensure that the O-Ring(12) and Washer(10) are fitted to the Adaptor(11).
8. Fit Adaptor(11) to Fixing Stud(4). Do not over tighten.
9. Fit Pull_out Hose(9) to the adaptor(11). See Fig 1.
10. Fit Counter Balance Weight(8) to Pull_out Hose(9) in the position.
11. Connect Braided Connectors(15) to the hot and cold water supplies using suitable plumbing joints.
12. Turn on the water supplies. Lift and turn handle both way a few minutes, to check all joints and connections for leaks.

AFTER CARE

To maintain the appearance of this fitting, ensure it is cleaned only using a clean soft damp cloth. A solution of warm water and mild liquid detergent may be used where necessary and then rinsed thoroughly. Abrasive cleaners or acidic cleaners **MUST NOT BE USED** under any circumstances. Avoid contact with solvents.

Please retain these instructions for future reference.

Watersmith UK Ltd., BA22 8RT.

UK Manufacturer:

Kingfisher International Products Limited,
3 Sheldon Square, London, W2 6PX,
United Kingdom
www.kingfisher.com/products
www.screwfix.com

EU Manufacturer:

Kingfisher International Products B.V.
Rapenburgerstraat 175E
1011 VM Amsterdam
The Netherlands
www.screwfix.ie