

INSTALLATION INSTRUCTIONS

CQF100 Range
Conceal Quiet Fans

Switch off mains supply before making any electrical connections.

Installation must be supervised by a qualified electrician.

This appliance can be used by children aged from 8 years and above and persons with reduced physical, sensory and mental capabilities or lack of experience and knowledge if they have been given supervision or instruction concerning the use of the appliance in a safe way and understand the hazards involved.

Children shall not play with the appliance.

Cleaning and user maintenance shall not be made by children without supervision.

Precautions must be taken to avoid the back-flow of gases into the room from the open flue of gas or other open-fire appliances when mounted in outside windows or walls.

Fan must be disconnected from electrical power before any maintenance is carried out.

Location

1. When installing fan through an external wall, an external wall grille must be fitted at all times.
2. For best results this Extractor Fan should be fitted as high on the wall as possible, or if preferred, on the ceiling. Note: Pullcord models should not be installed in a ceiling.
3. Where ducted fans are used to handle moisture-laden air, such as a bathroom, a condensation trap should be fitted in any vertical exhaust ducts. Horizontal ducts should be arranged to slope slightly away from the fan. Ducts passing through cold voids must be suitably insulated.
4. Do not install the unit within a shower cubicle or anywhere else where there is a risk of being sprayed with water (Please see our range of showerfans for these installations.).
5. If the fan is installed in a room containing a fuel burning appliance, the installer must ensure that the air replacement is adequate for both the fan and the fuel burning appliance.

Wiring

1. Switch off mains supply before making electrical connections. If in any doubt contact a qualified electrician.
2. These units are for fixed wiring only. A flexible cord must not be used. All wiring must be fixed securely and the cable to the fan should be a minimum of 1mm² in section. All wiring must comply with current I.E.E. Regulations or local regulations if outside the UK.
3. A double pole fused spur having contact separation of at least 3mm in all pole must be used and fitted with a 3A fuse.
4. This fan is double insulated and does not require an earth connection.
5. The fan should not be accessible to a person using either the shower or the bath.

IMPORTANT: READ THESE INSTRUCTIONS BEFORE COMMENCING THE INSTALLATION

DO NOT - install this product in areas where the following may be present or occur:

- Excessive oil or a grease laden atmosphere.
- Corrosive or flammable gases, liquids or vapours.
- Ambient temperatures higher than 40°C or less than -5°C.
- Possible obstructions which would hinder the access or removal of the Fan.

SAFETY AND GUIDANCE NOTES

1. When the Fan is used to remove air from a room containing a fuel-burning appliance, ensure that the air replacement is adequate for both the fan and the fuel-burning appliance.
2. The Fan should not be used where it is liable to be subject to direct water spray for prolonged periods of time.
3. Where ducted Fans are used to handle moisture-laden air, such as a bathroom, a condensation trap should be fitted in any vertical exhaust ducts. Horizontal ducts should be arranged to slope slightly downwards away from the Fan. Ducts passing through cold voids must be suitably insulated.
4. This product should not be disposed of with household waste. Please recycle where facilities exist. Check with your local authority for recycling advice.

INSTALLATION

PANEL/CEILING MOUNTING

1. For panel/ceiling mounting the fan should be installed into a closed duct system of at least 1.2m long or protected by an exterior air grille that must comply with the standard requirements of your country to prevent access to the fans impeller.
2. Cut a 105mm diameter hole.
3. Loosen the screw at the bottom of the grille and remove the front grille. Mark the screw centres through the holes in the fan back plate. Drill, plug and screw into position.
4. Attach ducting as required for the installation.
5. Wire the fan as described in the Wiring section.
6. After installation, ensure impeller rotates freely.
7. Replace the grille and tighten the retaining screw.

WALL MOUNTING

1. For wall mounting cut a 115mm diameter hole through the wall and insert the wall sleeve. Slope the sleeve slightly downwards away from the fan. Cut to length and cement both ends into position flush with the wall faces.
2. Loosen the screw in the bottom of the grille and remove the front grille. Mark the screw centres through the holes in the fan back plate. Drill, plug and screw into position.
3. Fix exterior grille into position with the louvres positioned downwards. (Note:- The grille must comply with the standard requirements of your country to prevent access to the fans impeller).
4. Wire the fan as described in Section B-Wiring. Adjust any settings as required (see Section C-Setup).
5. After installation, ensure impeller rotates freely.
6. Replace the grille and tighten the retaining screw.

SERVICING AND MAINTENANCE.

1. At intervals appropriate to the installation, the fan should be inspected and cleaned to ensure there is no build up of dirt or other deposits.
2. Carefully push the front panel of the grille upwards away from the base part of the grille. Wipe the inlets and front face with a damp cloth until clean.

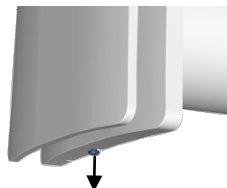
The fan has sealed for life bearings, which do not require lubrication.

WIRING.

 **WARNING: THE FAN AND ANCILLARY CONTROL EQUIPMENT MUST BE ISOLATED FROM THE POWER SUPPLY DURING THE INSTALLATION / OR MAINTENANCE.**

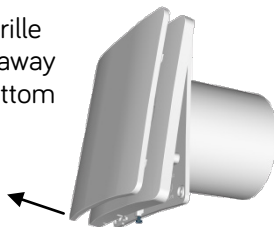
- The cross - sectional area of supply cord used should be ranged from 1 - 1.5mm².
- Cable entry can only be made from the rear of the fan.
- The extraction fan is suitable for connection to 220-240V 50Hz supply.
- The fan is a class II double insulated product and **MUST NOT** be earthed.

1. Select and follow the appropriate wiring diagram.
2. Check all connections have been made correctly and ensure all terminal connections and cable clamps are securely fastened before switching on the electrical supply.

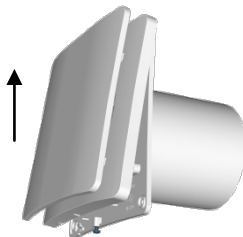


1. Loosen screw.

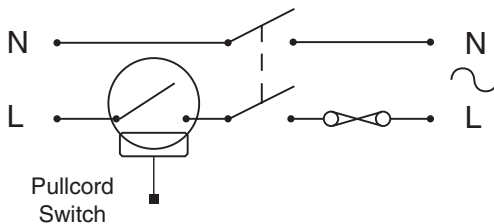
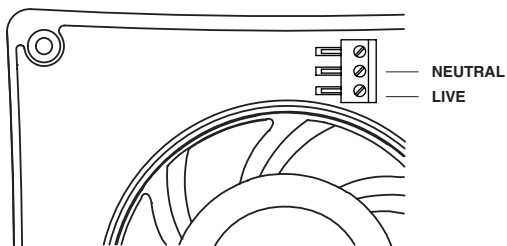
2. Pull grille slightly away from bottom edge.



3. Push grille upwards until clear from the fan chassis.



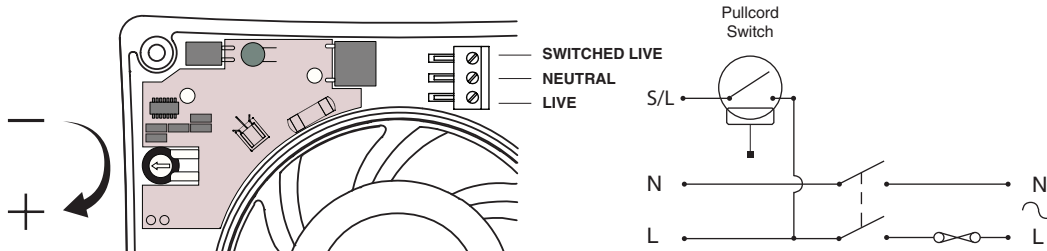
STANDARD FANS - Controlled by remote switch (e.g. light switch or auto sensor).



TIMER FANS

BEFORE ADJUSTING THE TIMER, SWITCH OFF THE MAINS SUPPLY.

Single speed with overrun timer. When switched 'ON', the fan will operate at full speed and will continue to run for a pre-set time after the switch is turned 'OFF'.



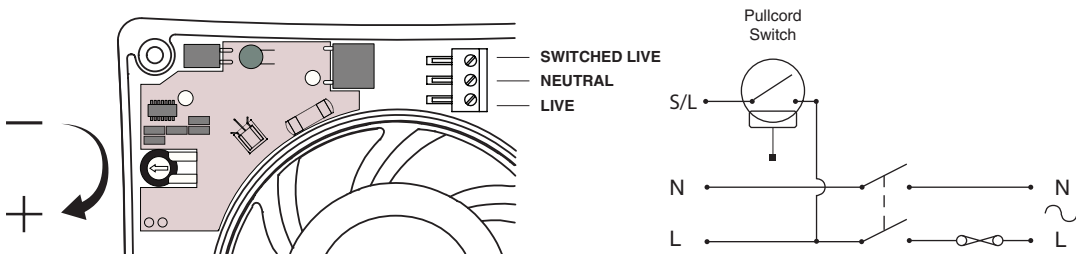
TIMER ADJUSTMENT - BEFORE ADJUSTING THE TIMER, SWITCH OFF THE MAINS SUPPLY.

1. Remove the fan grille. The controller is factory set at 15 minutes approx. The overrun time period can be adjusted from 5-25 minutes by altering the adjuster on the control PCB.
2. To REDUCE the operating time, use a small screwdriver to turn the adjuster **ANTI-CLOCKWISE**.
3. To INCREASE the operating time, use a small screwdriver to turn the adjuster **CLOCKWISE**.
4. Replace the fan grille.

HUMIDITY FANS

BEFORE ADJUSTING THE HUMIDITY SENSITIVITY, SWITCH OFF THE MAINS SUPPLY.

1. To lower the set point use a small screwdriver to turn the adjuster **ANTI-CLOCKWISE**. This makes the fan more sensitive.
2. To raise the set point use a small screwdriver to turn the adjuster **CLOCKWISE**. This makes the fan less sensitive.
3. Replace the fan grille.



PLEASE DISPOSE OF
USED FAN AT YOUR
LOCAL CIVIC AMENITY
SITE. DO NOT DISPOSE
IN DOMESTIC WASTE

