

# BRISTAN

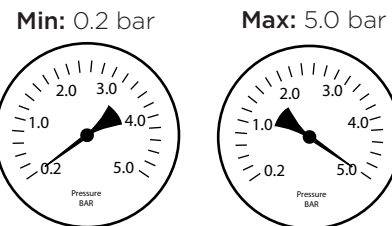
## Installation Instructions & User Guide

Please leave these instructions  
with the end user

Product Code: 190JK (D1)

### Specifications

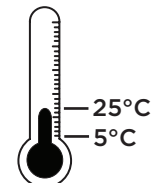
#### Working Pressures



Maximum Static Pressure: 10.0 bar

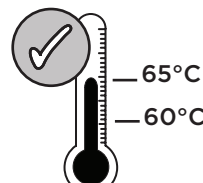
#### Inlet Water Temperature

##### Cold Water Supply



Min: 5°C Max: 25°C

##### Hot Water Supply



60-65°C Recommended

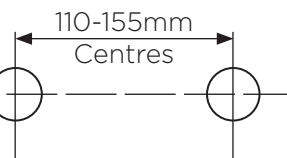
Factory pre-set  
41°C



#### TMV2 Designation

HP-SE  
LP-SE

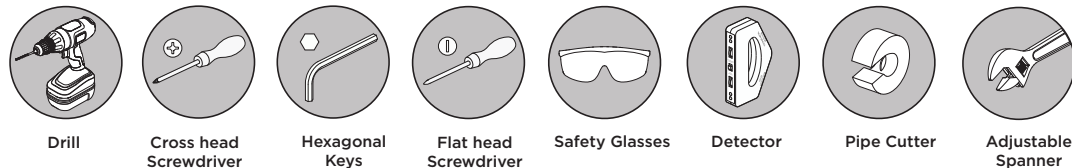
#### Inlet Dimensions



#### IMPORTANT

The inlet hot water must be at  
least 10°C above the required  
blend temperature.

### Tools You'll Need



#### Inlet Connections



### Prior to Installation

All products manufactured and supplied by Bristan are safe to use provided that they are installed, operated and receive regular maintenance in accordance with these instructions.

This product needs to be installed in accordance with, and meet the requirements of the Water Supply (Water Fittings) Regulations 1999 and current by-laws. For full Installation Requirements & Notes (IRN) please visit [wras.co.uk/directory](http://wras.co.uk/directory).

Isolation valves must be fitted to the inlet water supplies to ensure ease of future maintenance.

Before installing this product the water supply must be thoroughly flushed in order to remove any swarf, solder etc.

This product must not be modified in any way as this will invalidate the guarantee.

Full access must be made available for future maintenance/servicing purposes.

Before drilling into walls, check that there are no hidden electrical wires, cables or water supply pipes. This can be checked with the aid of an electronic detector.

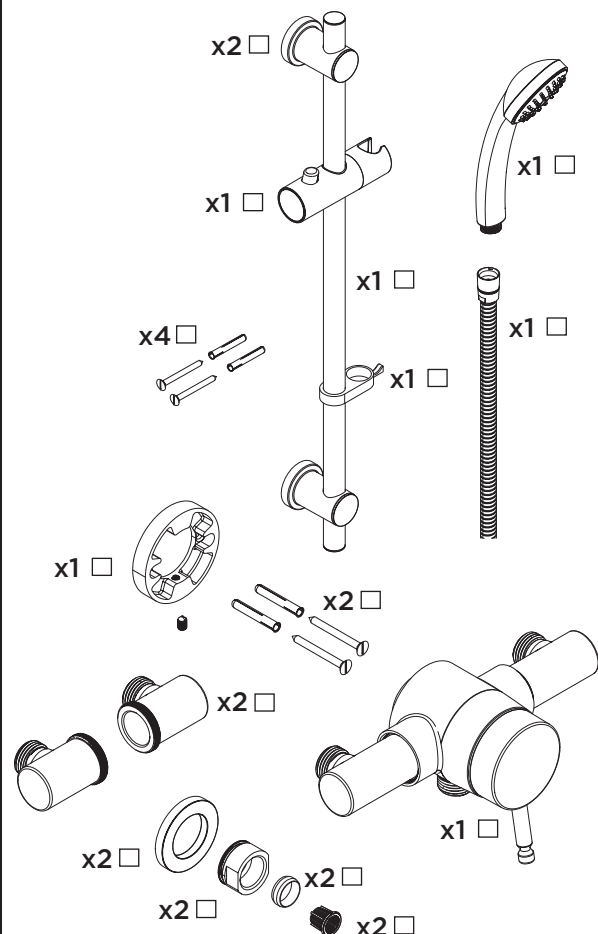
If power tools are used do not forget to:

- Wear eye protection
- Unplug equipment after use

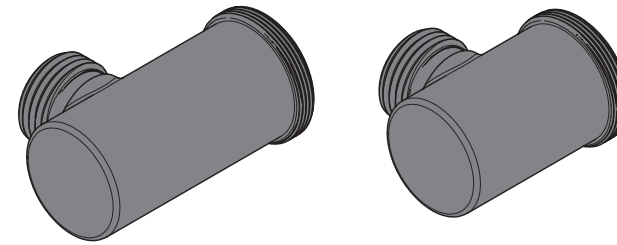
If in doubt, contact a registered plumber or your Local Water Authority or the Secretary of the Institute of Plumbing, address as follows:-

The Institute of Plumbing,  
64 Station Lane,  
Hornchurch,  
Essex,  
RM12 6NB, Tel: 01708 472791

### Pack Contents



### Elbow Adjustment

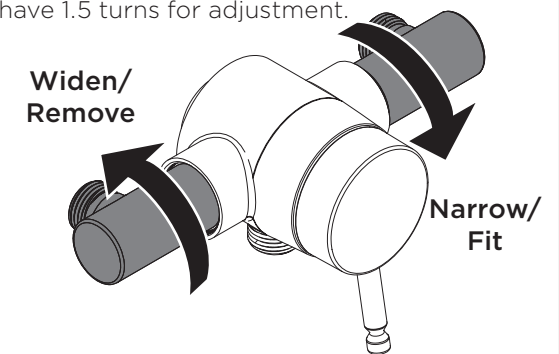


This shower valve is supplied with a set of small and large elbows to give varying centres. Choose your elbow configuration to suit the inlet centres:

2x small elbows - 110-130mm centres  
1 small elbow, 1 large elbow - 125 - 145mm centres  
2x large elbows - 136-155mm centres

To remove the elbows or have a wider measurement, unscrew anti-clockwise. Screw clockwise into the body to fit elbows or have a narrow measurement.

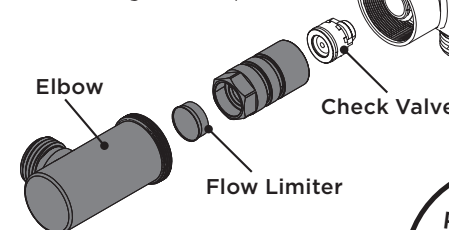
**Important:** the elbows must have at least two complete turns in the body to be attached. When fully screwed into the body, the elbows have 1.5 turns for adjustment.



### Flow Regulators

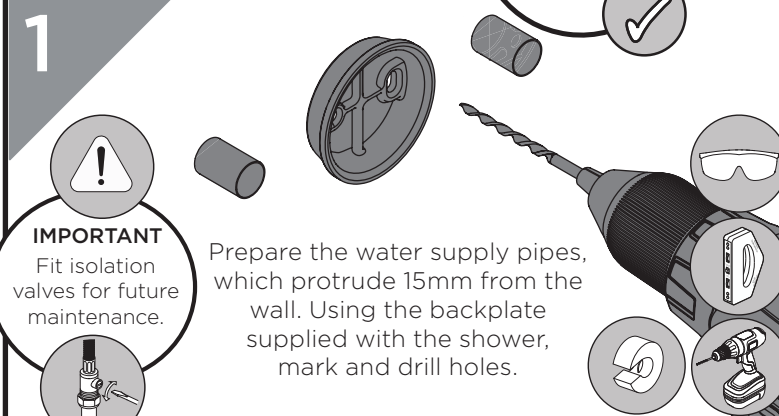
Flow regulators are pre-fitted into the shower valve and may need to be removed depending on your water system. Please see the table for specifications.

To remove, unscrew the elbows and remove the limiters using long-nosed pliers.

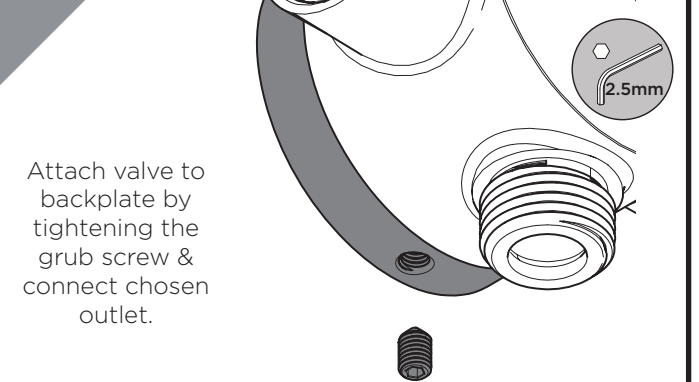
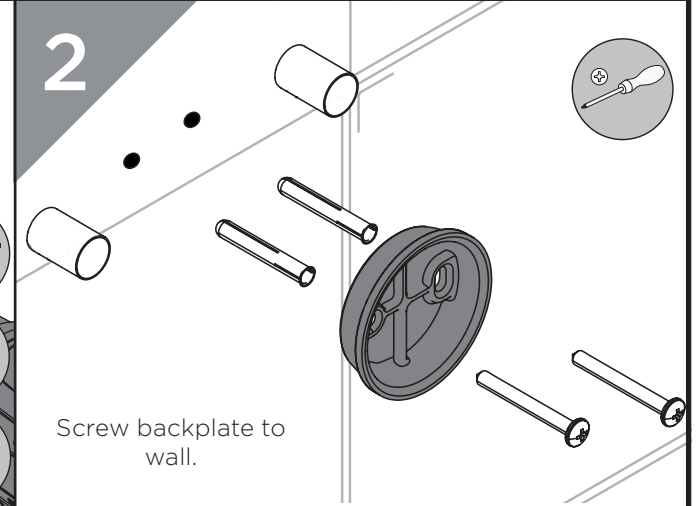
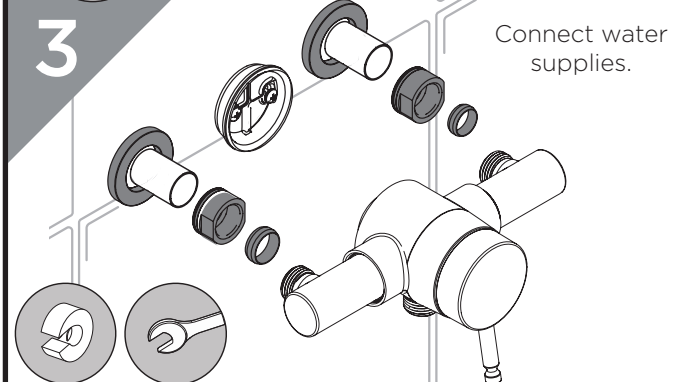


**REMEMBER**  
hot on the left,  
cold on the right

### Installation



**IMPORTANT**  
Fit isolation valves for future maintenance.



Installation - Adjustable Kit

1

Attach the brackets to the riser rail. Position on the wall, taking into consideration the height of users and ensuring it is straight. Mark the position of the brackets on to the wall surface.

2

Remove the bottom bracket. Mark the centre of the bracket holes and drill. Screw to the wall using supplied fixings.

3

Put the rail guide inside of the wall bracket and feed through the riser rail, ensuring the rail holes face forwards. Slide on the hose retainer, slider and riser caps as shown.

4


Mark the centre of the top bracket holes and drill. Insert the rail guide and slide the top bracket on to the riser rail, lining up the rail holes with the insert. Secure in place with the screws.

5

Push the caps on to the wall brackets. Feed the hose through the hose retainer and connect to the handset. Place on the slider. Push the button down to adjust the slider to the desired position.

Spare Parts

To replace any spare parts for your shower why not scan the below QR Code and search for your product.



Temperature Setting

1

Turn on the shower to maximum hot temperature. Wait for the temperature to stabilise. Unscrew the lever to remove the handle.

2

Using a hex key, turn the internal cartridge spindle clockwise to decrease the temperature. Turn cartridge spindle anti-clockwise to increase the temperature.

3

Reverse steps 2 & 1.

IMPORTANT

This shower is pre-set to 41°C as per TMV standards. If the maximum temperature is increased the shower will no longer comply with the TMV scheme.

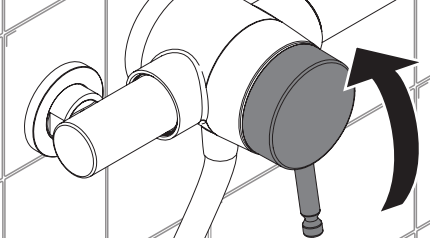
General Cleaning

Your fitting has a high quality finish and should be treated with care to preserve the visible surfaces.

All surfaces will wear if not cleaned correctly, the only safe way to clean your shower is to wipe with a soft damp cloth. Stains can be removed using washing up liquid. All bath cleaning powders and liquids will damage the surface of your fitting, even the non-scratch cleaners.

**Note:** Never use abrasive detergents or disinfectants or those containing alcohol, hydrochloric acid or phosphoric acid.

Operation



Turn the handle anti-clockwise to increase flow and temperature.

Maintenance - Cartridge Cleaning

1

IMPORTANT

Isolate water supply before starting.

Unscrew the handle lever and remove from the shower body.

2

Use a suitable spanner to unscrew the cartridge. Remove the cartridge and soak in a suitable solution.

3

Check & replace any O-rings. Re-grease using WRAS approved grease.

4

Reverse steps 2 & 1.

REMEMBER

To service your product!

Servicing Intervals

To reduce the build up of limescale and to ensure this shower works to its maximum performance we recommend this shower is serviced every 6-12 months depending on the hardness of your water.

Troubleshooting


Symptom	Cause	Remedy
No flow or low flow rate	Partially closed isolation valve.	Open isolation valve.
	Instantaneous water heater cycles on and off as flow rate or pressure is too low.	Increase water flow rate or pressure through system.
	Head of water is below the minimum distance required.	2 meters minimum required.
	Hot or cold water being drawn off elsewhere causing pressure changes or instantaneous boiler temperature changes.	Do not use other water outlets when using the shower.
	Airlock or partial blockage in the supply pipe work.	Flush through pipe work to ensure removal of debris and any airlocks.
Water dripping from shower	This is normal for a short time after using the shower.	This is caused by residual water tension, the build up of water in the shower.
	If water continues to drip, possibly due to the cartridge	Remove cartridge and clean, refer to 'Maintenance' section before starting any maintenance.
Shower does not turn on	Closed isolation valve.	Open isolation valve.
	Mains water supply turned off.	Turn on mains water supply.

At Bristan, we want to make things as easy as possible for our customers. That's why we offer solid guarantees on all our products, effective from the date of purchase, to give you peace of mind.

To start your free guarantee simply scan the QR code and register your product. Alternatively visit [www.bristan.com/register](http://www.bristan.com/register).

For any other queries, please call our Customer Service on 0330 026 6273 where our expert team of advisors will be able to offer you any help and advice.

For full guarantee terms and conditions visit [www.bristan.com/guarantees](http://www.bristan.com/guarantees).



*We Know & We Care*