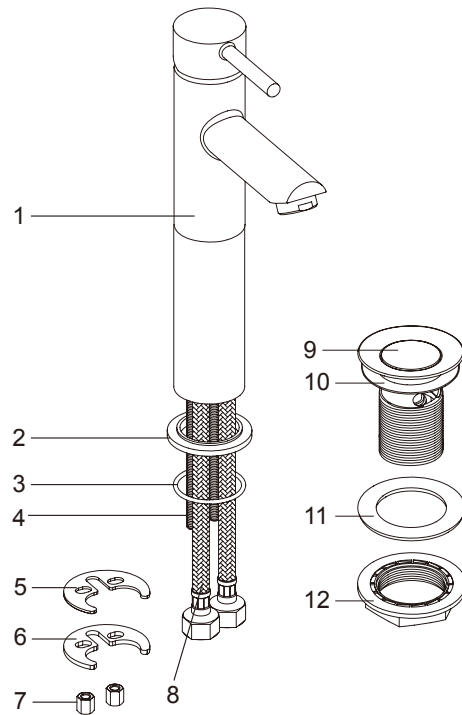




Fitting Instructions

Mono Basin Mixer



PARTS SUPPLIED

ITEM	DESCRIPTION	QTY
1	Tap Body	1
2	Flange	1
3	Anti-Rotational Washer	1
4	Fixing Studs	2
5	Rubber Horseshoe Washer	1
6	Metal Horseshoe Washer	1
7	Fixing Nuts	2
8	Braided Connectors	2
9	Waste Body	1
10	Sealing Washer	1
11	Backnut Washer	1
12	Backnut	1

BEFORE YOU START

This tap is suitable for use at water supply pressures of 0.3bar (min.) to 5bar (max.).

If the tap is installed into a low pressure (tank fed) system, the minimum height from the outlet of the nozzle to the underside of the water tank should be at least 3 metres to ensure adequate performance.

This product must be connected to water supply in accordance with the Water Supply (Water Fittings) Regulations 1999, and also to comply with UK Building Regulations. If you are in any doubt about these requirements, contact a qualified plumber, your local Water Company or the Water Regulations Advisory Scheme (WRAS).

- Identify all components and check pack contents.
- TURN OFF WATER MAINS SUPPLY.** The mains stopcock is usually situated where the supply enters the building.
- It is also recommended that the water heating arrangements are turned off.
- Isolate the hot and cold water supply.

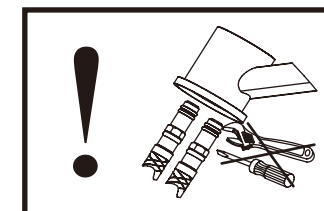
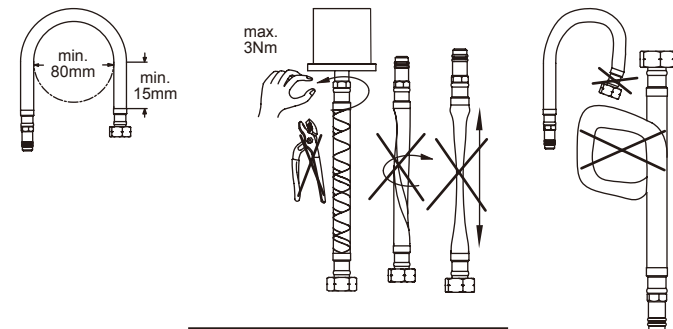
SAFETY

CAUTION: DO NOT overtighten the fixings otherwise it may damage the product.

CAUTION: Always ensure the product is securely installed before use.

When the installation is complete, turn the water supply on and check for leaks on connection points.

Failure to follow these instructions may result in personal injury, damage to the product and property damage.



INSTALLATION

1. Fit Fixing Studs (4) to the Tap Body (1).
2. Make sure that Anti-Rotational Washer (3) has been fitted to Flange (2).
3. Assemble Flange (2) to tap body and Screw 2 x Braided Connectors (8) into Mixer Tap Body (1). Locate the tap assembly down through the hole in the basin.
4. Fit Rubber Horseshoe Washer (5) onto threaded Studs (4). Fit Metal Horshoe Washer (6) and fit Fixing Nuts (7) onto Fixing Studs (4). DO NOT OVERTIGHTEN.
5. Bend the Braided Connectors (8) as necessary and connect to the water supplies using suitable plumbing joints.
6. Fit Waste Body (9) with Sealing Washer (10) through hole in basin. It is advisable at this stage to use small bead of silicone sealant between waste body and basin.
7. Fit Backnut Washer (11) over threaded part of waste body and screw Backnut (12) onto waste body. Do not overtighten.
8. Turn on the water supply and re-fill the system. Check immediately for leaks. It is always advisable at this stage to flush out the system. To do this, open both valves fully and allow water to flow for approximately 1 minute. This will remove any foreign matter within the Tap Body.
9. Finally turn on all the water heating arrangements.

AFTER CARE

To maintain the appearance of this fitting, ensure it is cleaned only using a clean soft damp cloth.

A solution of warm water and mild liquid detergent may be used where necessary and then rinsed thoroughly. Abrasive cleaners or acidic cleaners MUST NOT BE USED under any circumstances.

Avoid contact with solvents.

MANUFACTURER'S GUARANTEE

This Tap is Guaranteed to be free from faults arising from Manufacturing defects for a period of 2 Years from the date of purchase.

Retain proof of purchase.

UK Manufacturer:

Kingfisher International Products Limited,
3 Sheldon Square, London, W2 6PX,
United Kingdom
www.kingfisher.com/products
www.screwfix.com

EU Manufacturer:

Kingfisher International Products B.V.
Rapenburgerstraat 175E
1011 VM Amsterdam
The Netherlands
www.screwfix.ie