

EN Concealed Cistern  
6 ltr

5059340756813  
5059340756493

**EN IMPORTANT** - These instructions are for your safety. Please read through them thoroughly prior to handling the product and retain them for future reference.

V10523\_5059340756813\_MAND1\_2223

## EN Parts



01. x1



02. x1



03. x1



04. x2



05. x2



06. x2



07. x2



08. x1



09. x1



10. x1



11. x1



12. x1



13. x1

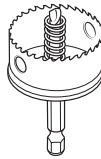
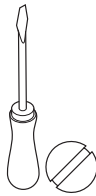


14. x1

## EN You will need



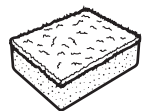
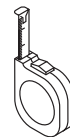
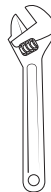
x1



Ø 38 mm



6 mm



## EN Contents

EN	
Safety	3
Guarantee	3
Preparation	4
Assembly	5
Care & maintenance	11



### Before you start

- Ensure that this product is suitable for the installation you have and that all component listed are provided before starting the installation.
- Don't rush. Read the instructions first and familiarise yourself with the sequence before you begin, as some aspects of this installation may differ from other products on the market.
- Ensure water supply to the cistern is isolated before beginning works and drain as much water from your cistern to avoid water damage to your property.
- Failure to follow these instructions may result in personal injury, damage to your property, damage to the product and loss of guarantee.
- Please use appropriate fixings for the installation mounting structure.

### Safety

- Make sure that water supply to your cistern has been isolated correctly and that the system is drained as much as possible to avoid any water damage to your property
- Do not use sealing compounds when installing this product as damage over time may occur to the plastic components causing leaks.
- Do not over-tighten components as damage over time may occur.
- Do not add any Chemicals (e.g. Disinfectant Tablets/Bleaches etc) into the cistern water.
- The product, its components and packaging are not toys and should be kept out of the reach of children.
- If you are a DIYer and have limited experience with plumbed water systems, it is always good to contact a professional for guidance.

### Guarantee

We take special care to select high quality materials and use manufacturing techniques that allow us to create products incorporating design and durability. This product has a manufacturer's guarantee of 10 years against manufacturing defects, from the date of purchase (if bought in store) or date of delivery (if bought online), at no additional cost for normal (non-professional or commercial) household use.

To make a claim under this guarantee, you must present your proof of purchase (such as a sales receipt, purchase invoice or other evidence admissible under applicable law), please keep your proof of purchase in a safe place. For this guarantee to apply, the product you purchased must be new, it will not apply to second hand or display products. Unless stated otherwise by applicable law, any replacement product issued under this guarantee will only be guaranteed until expiry of the original period guarantee period.

This guarantee covers product failures and malfunctions provided the product was used for the purpose for which it is intended and subject to installation, cleaning, care and maintenance in accordance with the information contained in these terms and conditions, in the user manual and standard practice, provided that standard practice does not conflict with the user manual.

This guarantee does not cover defects and damage caused by normal wear and tear or damage that could be the result of improper use, faulty installation or assembly, neglect, accident, misuse, or modification of the product. Unless stated otherwise by applicable law, this guarantee will not cover, in any case, ancillary costs (shipping, movement, costs of uninstalling and reinstalling, labour etc), or direct and indirect damage.

The guarantee excludes diaphragms, flush washer, flush button and seals.

If the product is defective, we will, within a reasonable time, replace or refund.

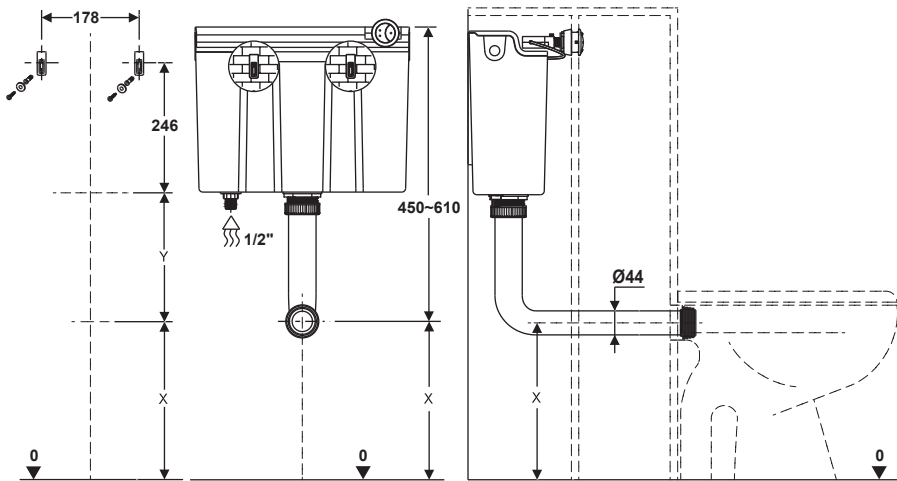
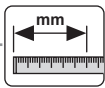
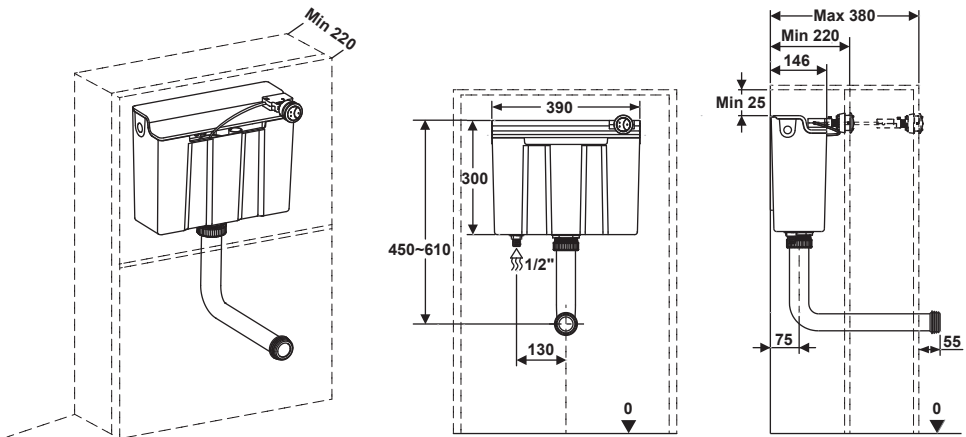
Rights under this guarantee are enforceable in the country in which you purchased this product. Guarantee related queries should be addressed to the store you purchased this product from.

The guarantee is in addition to and does not affect your statutory rights.

**IMPORTANT - RETAIN  
THIS INFORMATION  
FOR FUTURE  
REFERENCE:  
READ CAREFULLY**

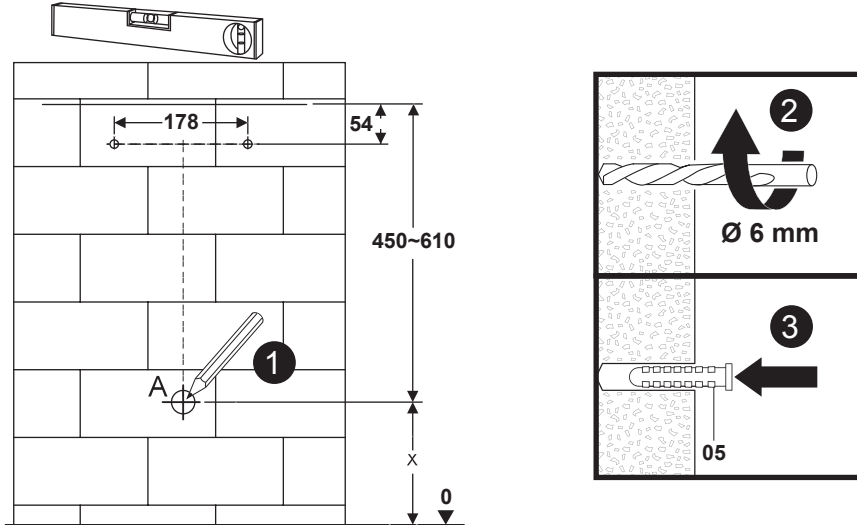
# EN Preparation

## Information



Use the above dimensions to aid in the installation process.

# 01

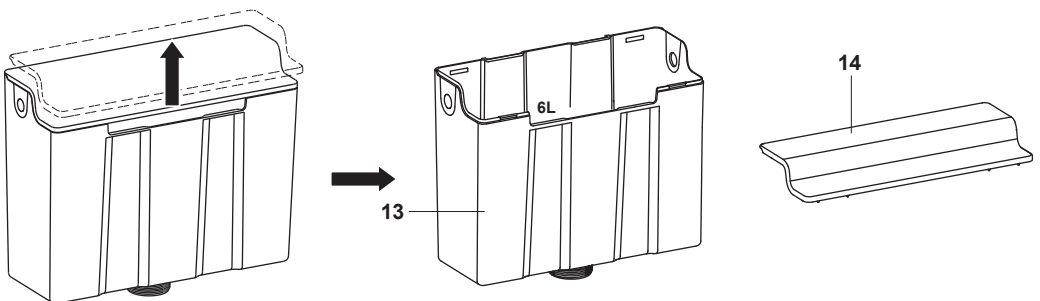


Measure and mark the fixing points for the cistern in relation to the water outlet connection to your toilet pan. Use a spirit level to ensure all measurements are level and square.

Drill and secure the plugs into the wall. Make sure you use the correct plugs for your wall material. Kit is supplied with plugs for concrete walls only.

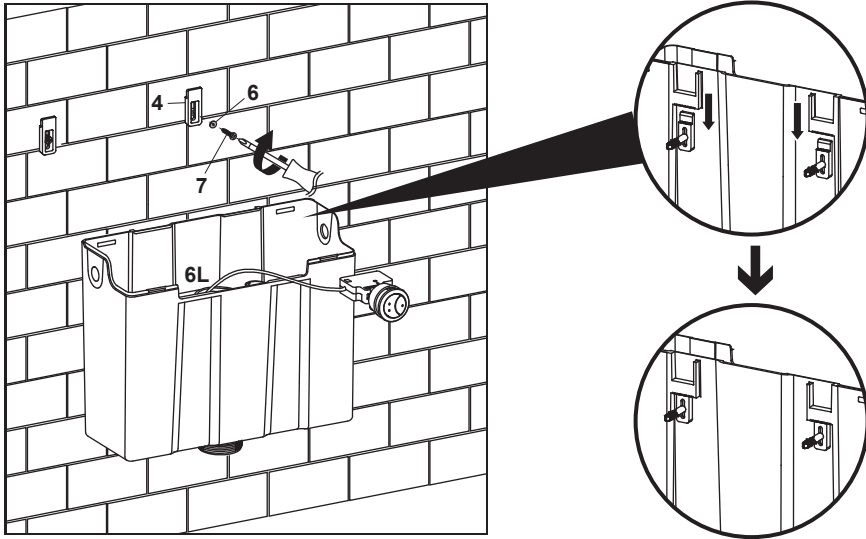
Make sure there are no cables or pipes within the wall before you begin to drill.

# 02



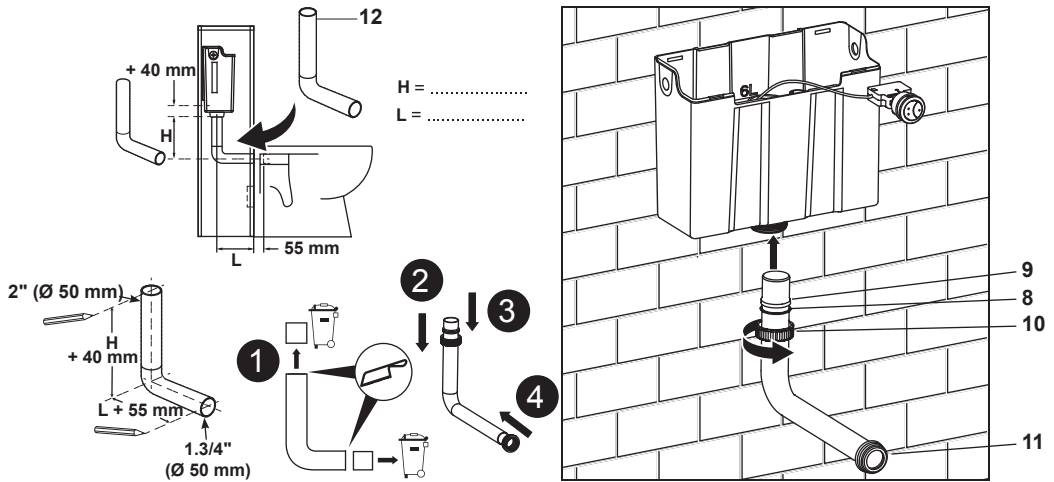
Remove the lid of the cistern to gain access for the rest of the installation.

# 03



Fix the supplied brackets to the wall and hang the cistern in place.

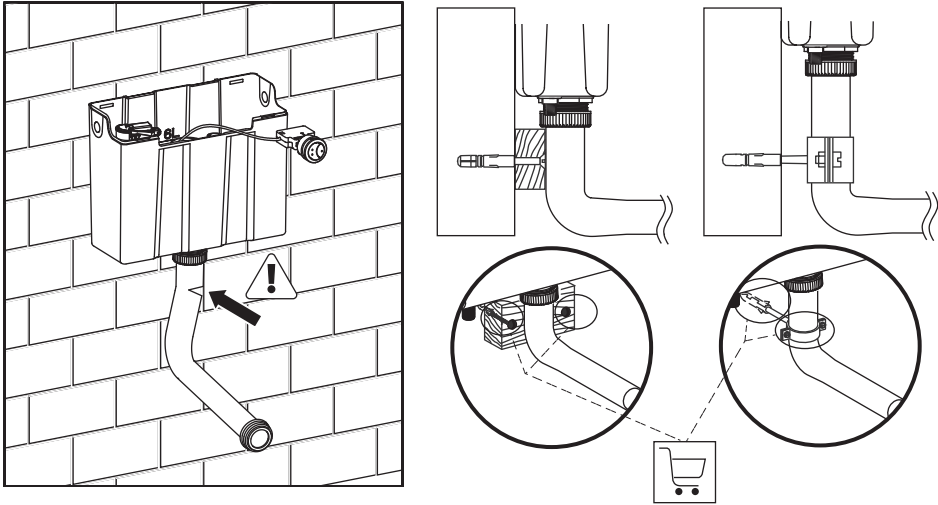
# 04



Using the diagram provided, determine the length H and L and cut the supplied flush pipe to the desired length using a saw. Make sure to clean the burrs from the cut edges with sandpaper.

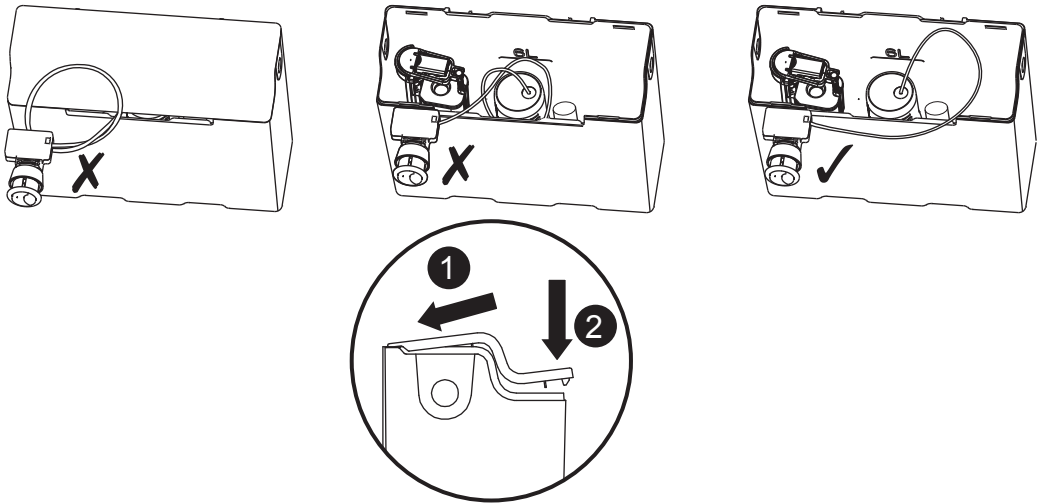
Assemble the flush pipe into the cistern making sure all seals and washers are in the order shown above.

# 05



We advise adding additional support behind the flush pipe. This will ensure that any load placed on the cistern and pipe will not result in any breakages. The pipe supports are not supplied.

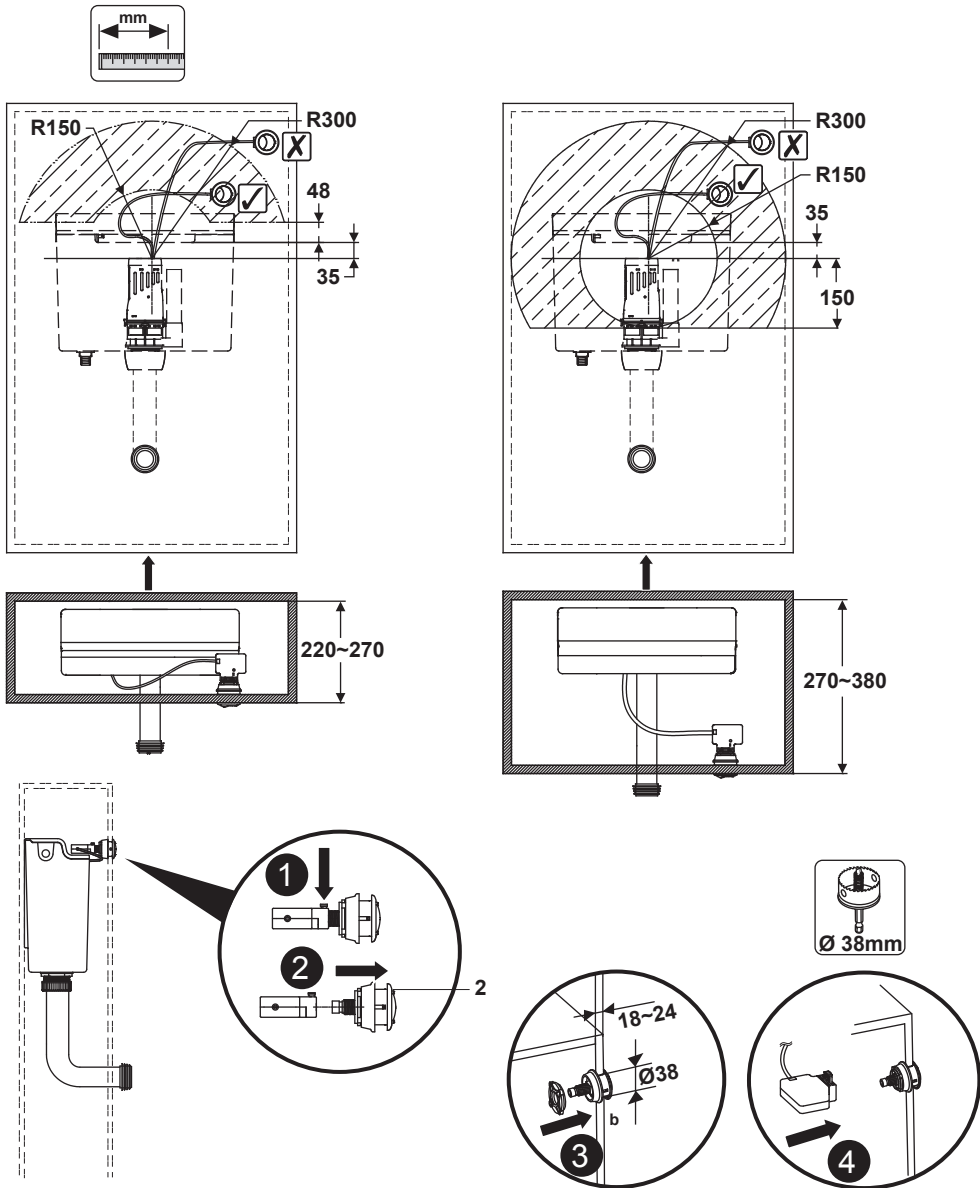
# 06



Make sure the cable is free and not tangled or knotted. This will make sure the operation works correctly.  
Fit the lid back to the cistern.

# 07

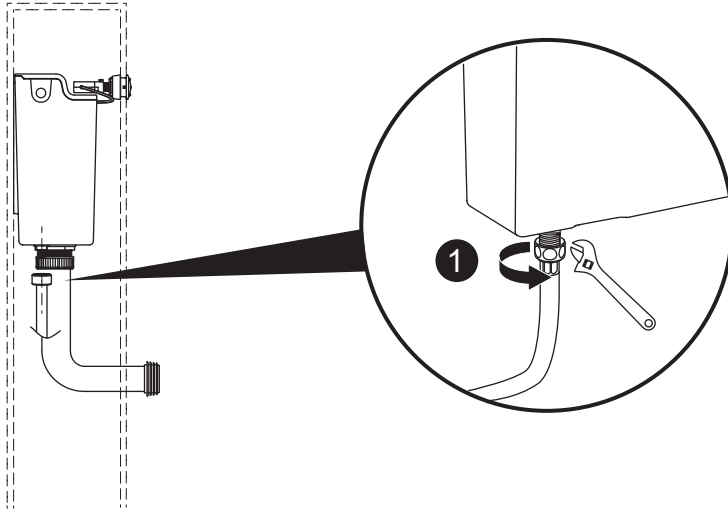
02. x1



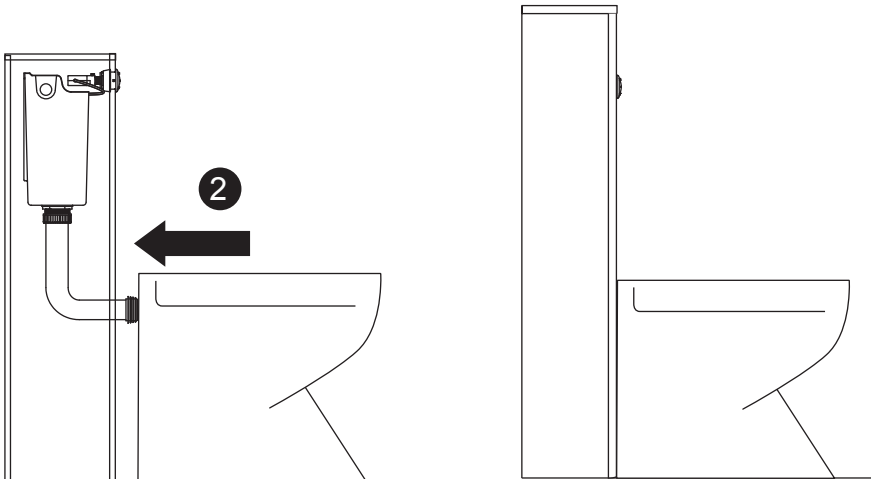
Using the diagram provided, determine the correct position for the flush button and mark ready for cutting. Using a drill and holes saw, cut a hole in the unit and fit the button as shown. Make sure there is suitable access to the rear of the button to allow the user to remove the mechanism if needed.



# 08

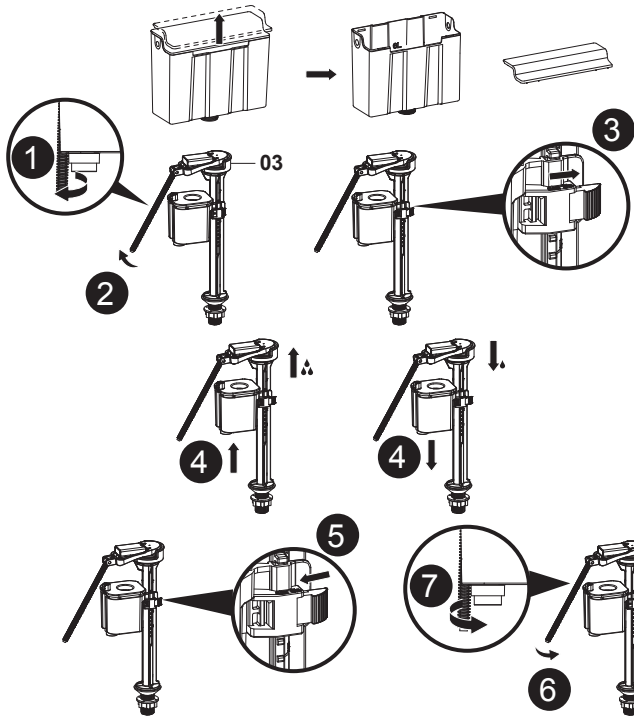


Secure the water supply line to the fill valve and tighten with a spanner. Be sure not to overtighten as damage may occur over time.

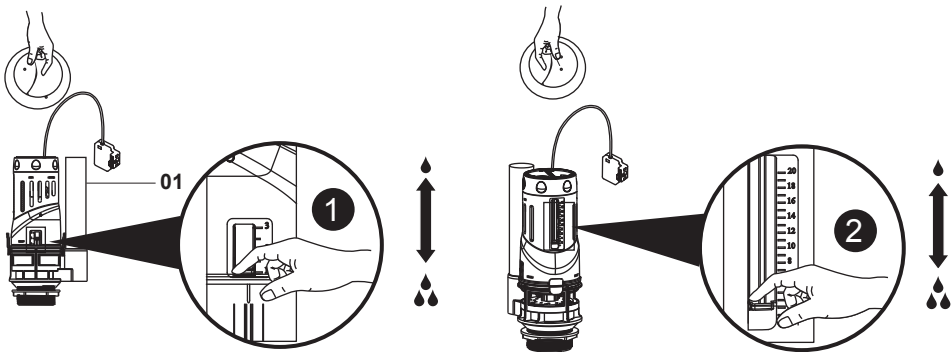


Fit your pan to the flush pipe and follow manufacturers instruction on how to safely secure you pan to the floor/unit.

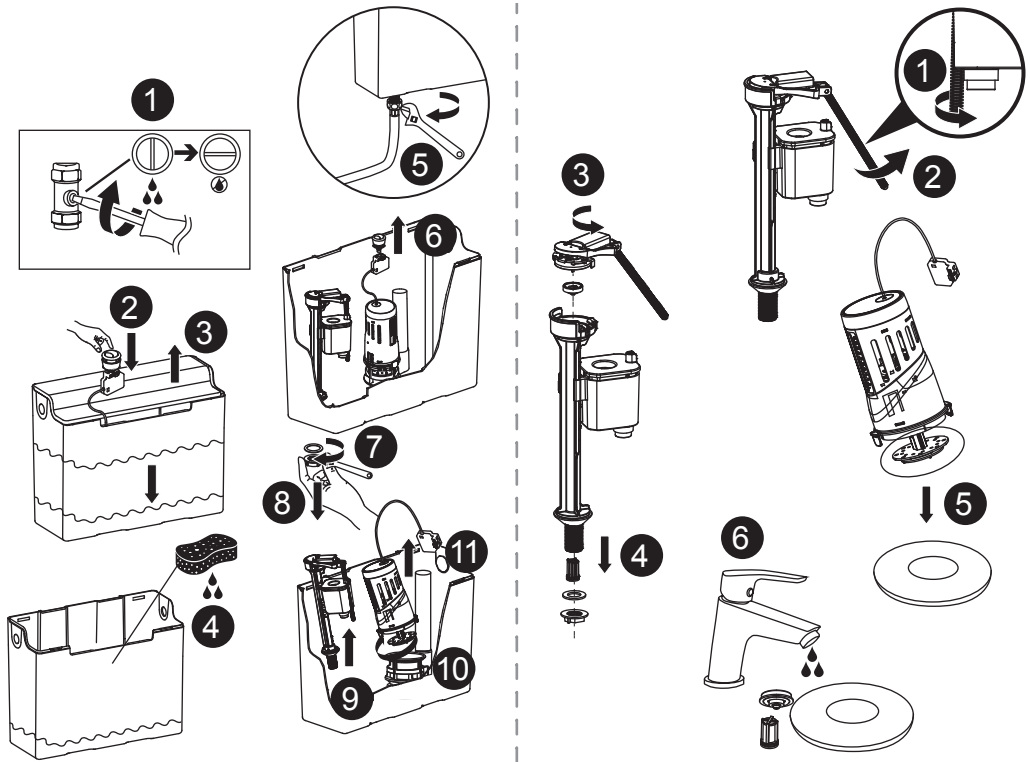
# 09



# 10



The valves within the cistern are already set to function correctly out of the box. However, if you they require any adjustment, follow the above instruction on how to adjust the water level withing the cistern [Step09] and the flush valve half flush and full flush volumes [Step10].



To maintain or replaced worn out seals for both the fill and flush valves, first start by isolating the water supply to the cistern.

Follow the steps shown to allow the user to remove both the valves to access the seals.

The fill valve has a built-in filter that can also be removed from cleaning.

We recommend the seals and filter are cleaned every 6 months or earlier if you live in a hard water area.

Inspect the seals on the valves. If they appear worn and damaged, remove them as shown and replace. If there is no visible damage, clean the seals of any debris with water and refit. Whilst the cistern is isolated and drained, clean the inside of the cistern of any debris.

Follow the same steps in reverse order to reinstall your fill and flush valve to working order.

---

**Manufacturer:**

**UK Manufacturer:**

Kingfisher International Products Limited,  
1 Paddington Square, London, W2 1GG,  
United Kingdom

**EU Manufacturer:**

Kingfisher International Products B.V.,  
Rapenburgerstraat 175E,  
1011 VM Amsterdam,  
The Netherlands

**EN** [www.diy.com](http://www.diy.com)  
[www.screwfix.com](http://www.screwfix.com)  
[www.screwfix.ie](http://www.screwfix.ie)

**To view instruction manuals online,  
visit [www.kingfisher.com/products](http://www.kingfisher.com/products)**