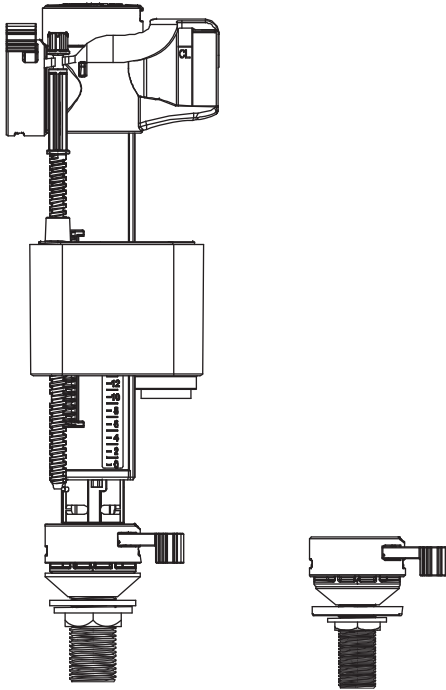


EN Bottom or side-entry  
universal 4-in-1 fill  
valve 1/2 or 3/8"

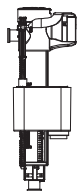


**EN IMPORTANT** - These instructions are for your safety. Please read through them thoroughly prior to handling the product and retain them for future reference.

V10623\_5059340756646\_MAND1\_2223

5059340756646  
5059340756554

## EN Parts



01. x1



02. x1



03. x1



04. x1



05. x1



06. x1



07. x1

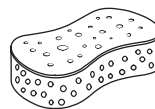
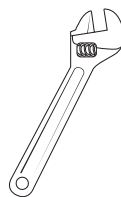
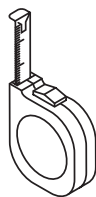
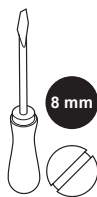


08. x1



09. x1

## EN You will need



## EN Contents

<b>EN</b>	
<b>Safety</b>	3
<b>Guarantee</b>	4
<b>Preparation</b>	5
<b>Assembly</b>	6
<b>Care &amp; maintenance</b>	8



### Before you start

- Don't rush, read the instructions first and familiarise yourself with the sequence before you begin.
- Make sure you have all of the parts listed.
- Failure to follow these instructions may result in personal injury, damage to your property, damage to the product and lose of guarantee.
- When replacing any fill or flush device, first mark or take a note of the water level in the cistern before draining. Most cisterns will also have a recommended water level marked on the inside surface.
- The "water level" reference is used when installing your valves to ensure they function correctly.
- Lastly, determine the configuration you need for your cistern. If the valve is to be installed as a bottom entry, follow steps 1A (this includes instructions on how to change from 1/2" to 3/8" shank also). For side entry, follow steps 1B (this includes instructions on how to change from 1/2" to 3/8" shank also).

### Removal of existing valve

Please note the below information is only a guide and your own installation may differ slightly.

If this is a new installation and you have no existing valve in your cistern, move straight onto step 1.

- If you have a fill valve already installed, begin by isolating the water supply to the fill valve.
- It is a good idea to measure the water depth or mark the cistern at the water level. This will help set the water level back to the same point after the valve has been installed.
- Drain the water from the cistern by flushing the toilet and removing all excess water with a sponge.
- Remove the water supply connection from the fill valve shank.
- Most fill valves will be secured to the cistern with a locking nut that can be removed by hand or with a spanner. The nut should be situated on the inlet shank of the fill valve, on the outside of the cistern.
- Remove and correctly dispose of the old fill valve.

- Clean all debris from the inside of the cistern including any existing seals/washers.
- We also recommend flushing the water supply pipework for 10 seconds before installing the new valve. Be sure to position a bucket under the water supply line before opening the isolation valve.

### Safety

- Do not use sealing compounds as damage over time may occur to the plastic components causing leaks.
- Do not over-tighten components as damage over time may occur.
- Do not add any Chemicals (e.g. Disinfectant Tablets/Bleaches etc) into the cistern water.
- Suitable for water temperature range: 2°C to 45°C and pressure range: 0.2Bar to 8Bar.
- The product, its components and packaging are not toys and should be kept out of the reach of children.

### Guarantee

We take special care to select high quality materials and use manufacturing techniques that allow us to create products incorporating design and durability. This product has a manufacturer's guarantee of 10 years against manufacturing defects, from the date of purchase (if bought in store) or date of delivery (if bought online), at no additional cost for normal (non-professional or commercial) household use.

To make a claim under this guarantee, you must present your proof of purchase (such as a sales receipt, purchase invoice or other evidence admissible under applicable law), please keep your proof of purchase in a safe place. For this guarantee to apply, the product you purchased must be new, it will not apply to second hand or display products. Unless stated otherwise by applicable law, any replacement product issued under this guarantee will only be guaranteed until expiry of the original period guarantee period.

This guarantee covers product failures and malfunctions provided the product was used for the purpose for which it is intended and subject to installation, cleaning, care and maintenance in accordance with the information contained in these terms and conditions, in the user manual and standard practice, provided that standard practice does not conflict with the user manual.

This guarantee does not cover defects and damage caused by normal wear and tear or damage that could be the result of improper use, faulty installation or assembly, neglect, accident, misuse, or modification of the product. Unless stated otherwise by applicable law, this guarantee will not cover, in any case, ancillary costs (shipping, movement, costs of uninstalling and reinstalling, labour etc), or direct and indirect damage.

The guarantee excludes diaphragms and seals.

If the product is defective, we will, within a reasonable time, replace or refund.

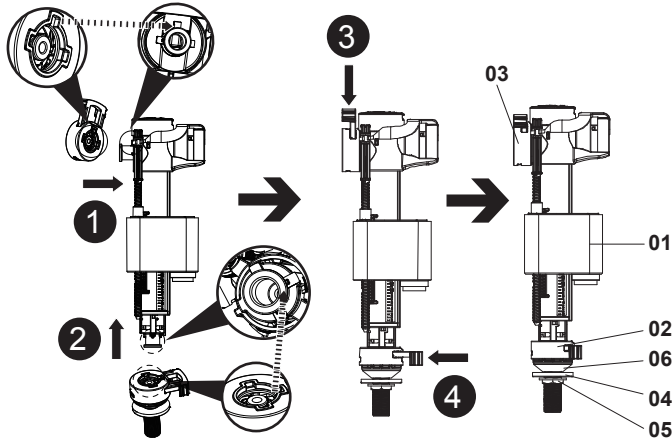
Rights under this guarantee are enforceable in the country in which you purchased this product. Guarantee related queries should be addressed to the store you purchased this product from.

The guarantee is in addition to and does not affect your statutory rights.

**IMPORTANT - RETAIN  
THIS INFORMATION  
FOR FUTURE  
REFERENCE:  
READ CAREFULLY**

## EN Assembly

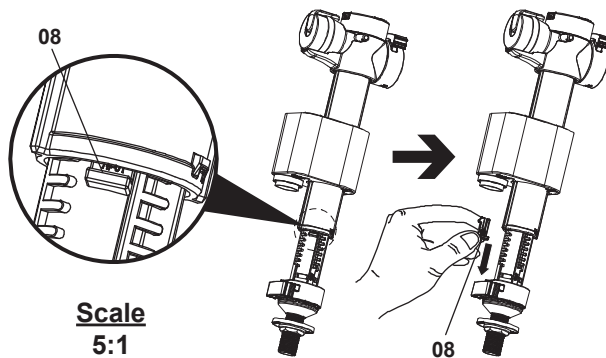
# 1A



The valve will come pre-assembled for bottom entry installation. Please check that the product supplied matches image on the far right above.

If any of the components are not installed, they may have come loose in transit. First check for signs of damage and then follow steps 01, 02, 03 and 04 above to put the valve back together.

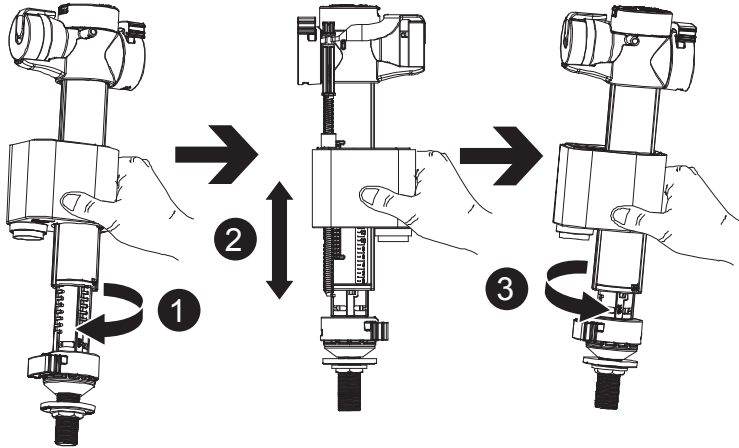
# 2A



To adjust the height, first remove the clip 08 as shown in the image.

**IMPORTANT** - This must be removed by hand and no tools are required. Take care when removing the clip to ensure it is not damaged.

# 3A

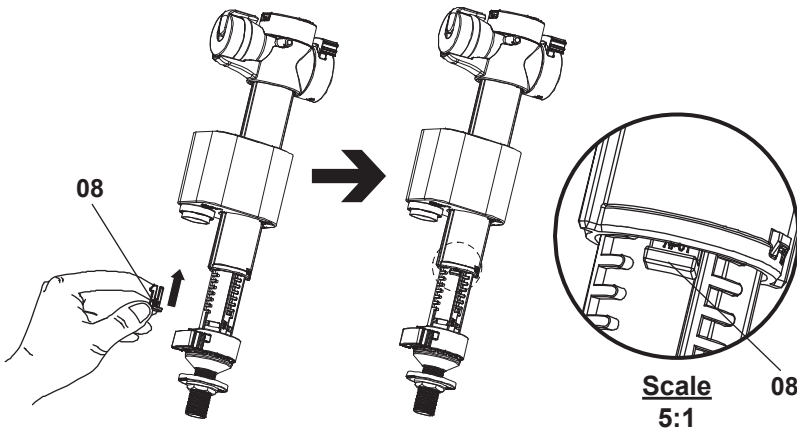


1. Rotate the bottom of the fill valve in a clockwise direction as shown by the arrow.
  2. Adjust the height as required\*
  3. Rotate the bottom of the fill valve anti-clockwise to secure the height in place.
- \* Please reference step 10A to help set the height correctly and before fully installing the valve.

# 4A

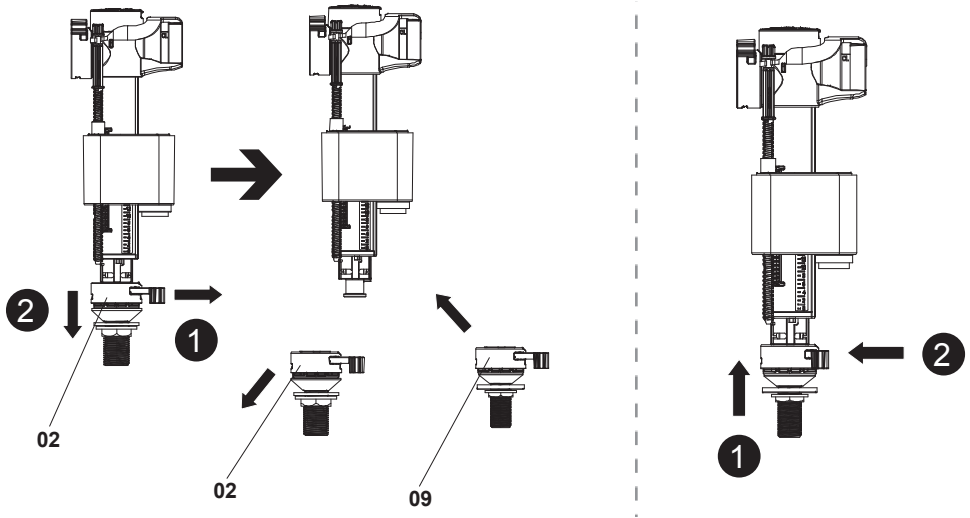
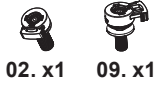


08. x1



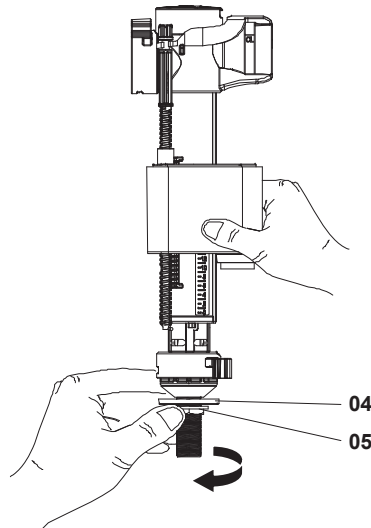
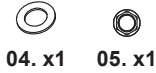
Fit the clip 08 as shown in the image to lock the height adjustment.

# 5A



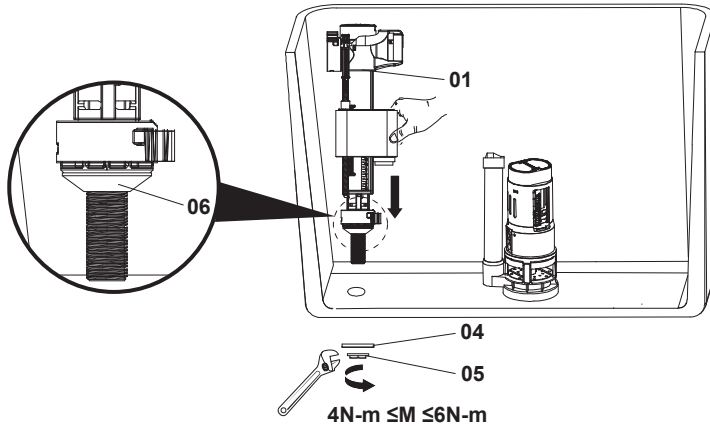
If your installation requires a 3/8" shank, follow the instruction above on how to swap from 1/2" to 3/8" configuration. Then lock the shank back in place.

# 6A



Remove nut 05 and washer 04 from the valve 01.

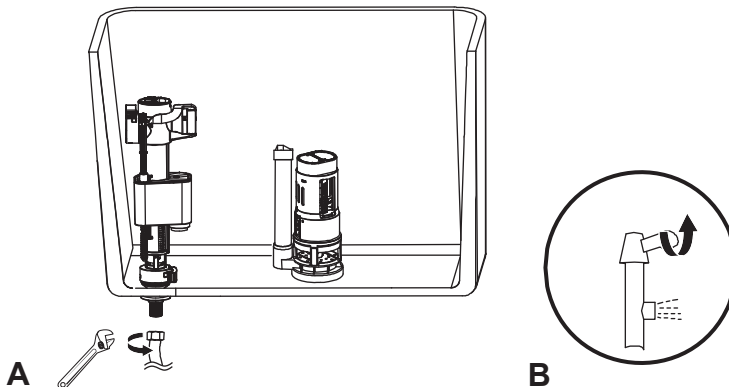
# 7A



Fit the valve 01 with seal 06 to the inside of the cistern and through the hole as shown. Ensure the seal 06 is in the orientation shown in the image.

Fit washer 04 and then tighten the locking nut 05 until the valve is firmly in place, but do not over-tighten. To avoid damage to the cistern, a torque wrench can be used to accurately measure the force and should not exceed 6Nm.

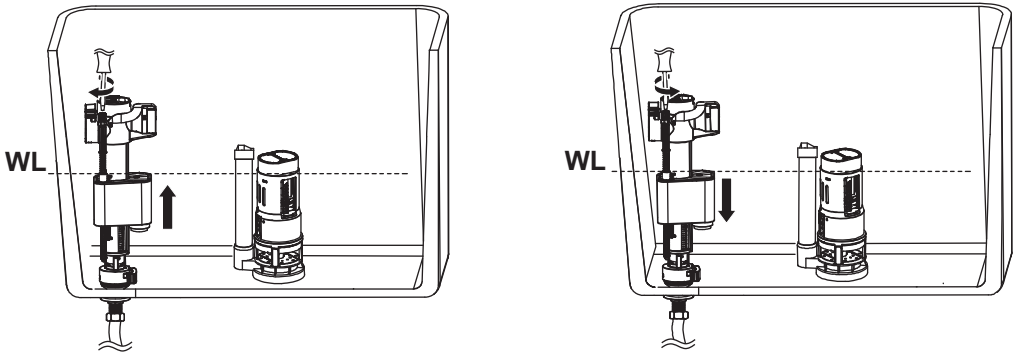
# 8A



- A. Fit the water supply line to the fill valve shank.
- B. Turn on the water supply (at mains or local isolation valve).

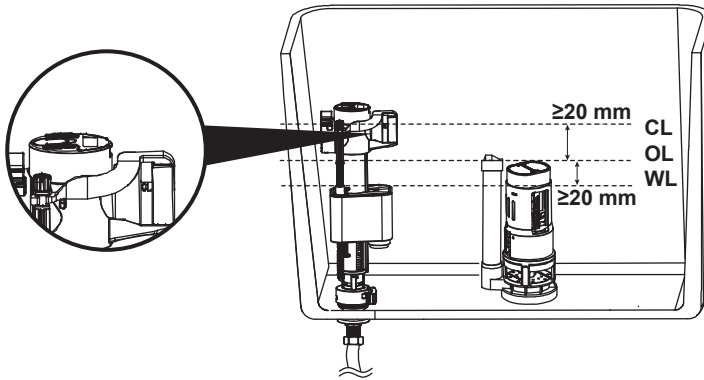


# 9A



Increase the valve shut-off height and cistern water level (WL) by turning screw clockwise.  
Decrease the valve shut-off height and cistern water level (WL) by turning screw anti-clockwise.

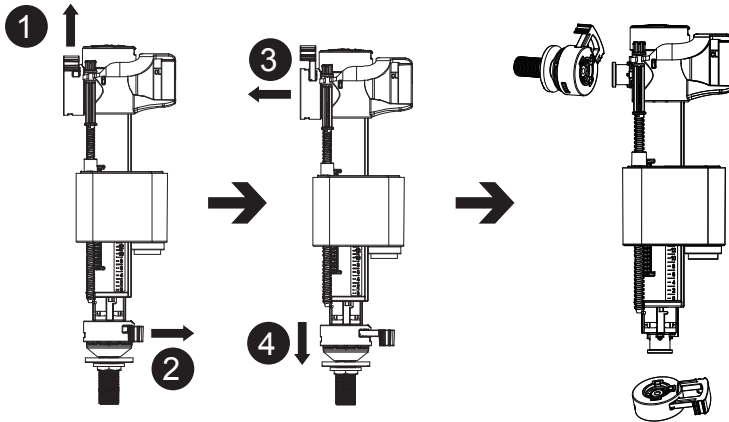
# 10A



Using a tape measure, complete the following steps to ensure your fill valve is installed correctly.

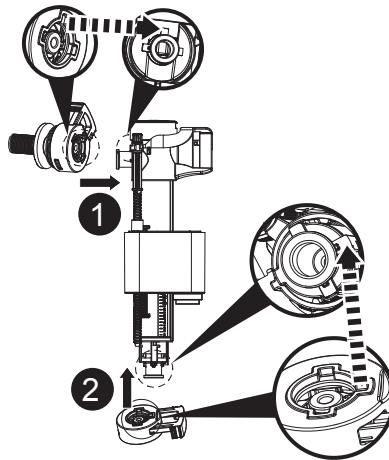
1. Measure the distance between the overflow level (example shown above with the middle dotted line listed OL) to the CL marking of the new fill valve (example shown above with the top dotted line listed CL and close up image of the valve).
2. If this distance is less than 20 mm, please refer to steps 02A to 04A on how to adjust the valve height.
3. Next measure the distance between the overflow level (example shown above with the middle dotted line listed OL) to the water level (example shown above with the bottom dotted line listed WL).
4. If this distance is less than 20 mm, please refer to steps 08A and 09A on how to adjust the water level height.

# 1B



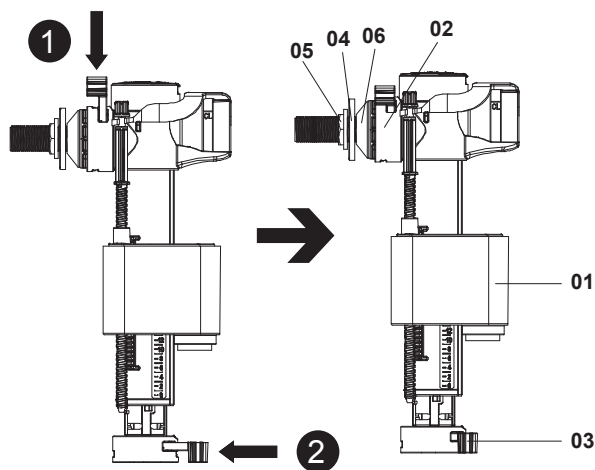
The valve will come pre-assembled for bottom entry installation and will require some adjustment to configure for a side entry installation. Follow the steps above that highlight how to remove the shank and blank from the valve.

# 2B



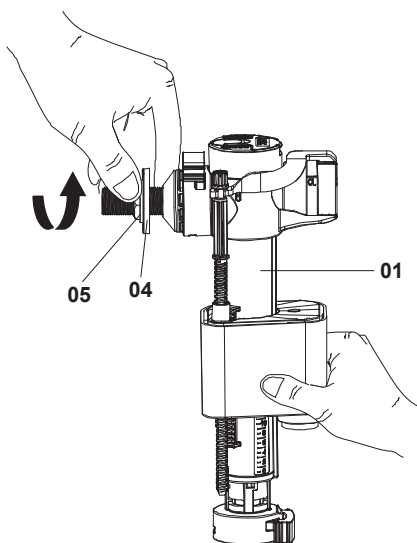
Now fit the shank [ $\frac{1}{2}$ "] or [ $\frac{3}{8}$ "] depending on your installation and the blank to the positions on the valve as shown in the drawing. Ensure they line up correctly with the guides on the fill valve.

# 3B



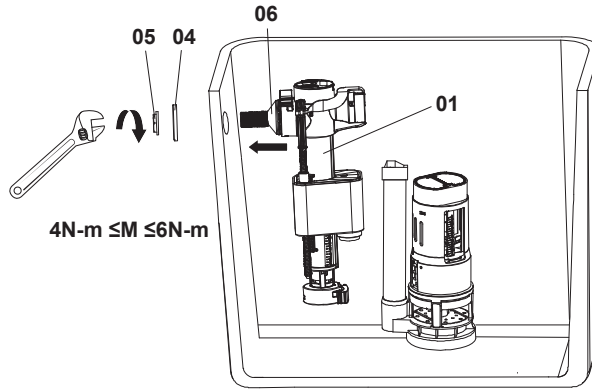
Close the clips on both the shank and the blank as shown by the arrows in the image.

# 4B



Remove nut 05 and washer 04 from the valve 01.

# 5B



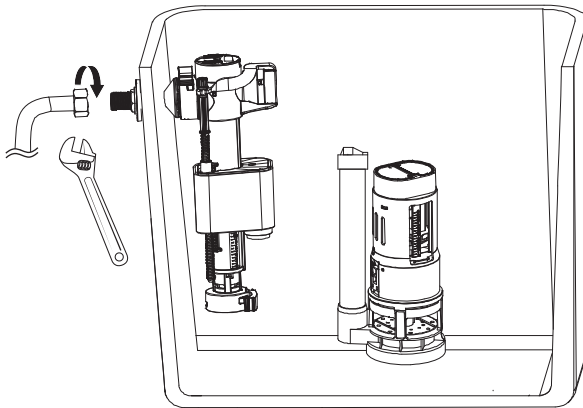
Fit the valve 01 with seal 06 into the cistern hole as shown (this can be positioned on the left or right depending on the installation).

Ensure the seal 06 is in the orientation shown in the image.

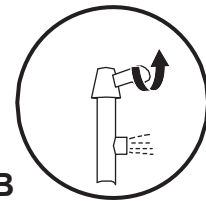
Fit washer 04 and then tighten the locking nut 05 until the valve is firmly in place, but do not over-tighten. To avoid damage to the cistern, a torque wrench can be used to accurately measure the force and should not exceed 6Nm.

# 6B

A



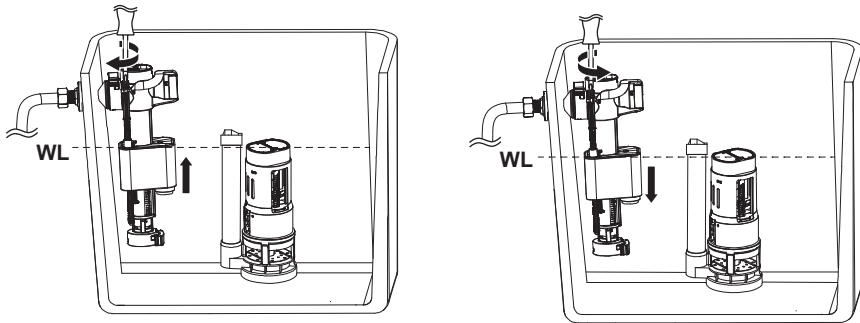
B



A. Fit the water supply line to the fill valve shank.

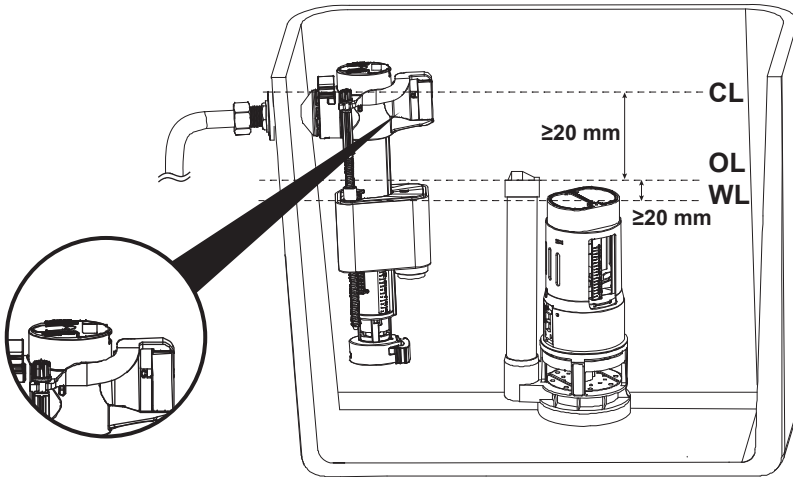
B. Turn on the water supply (at mains or local isolation valve).

# 7B



Increase the valve shut-off height and cistern water level (WL) by turning screw clockwise.  
Decrease the valve shut-off height and cistern water level (WL) by turning screw anti-clockwise.

# 8B



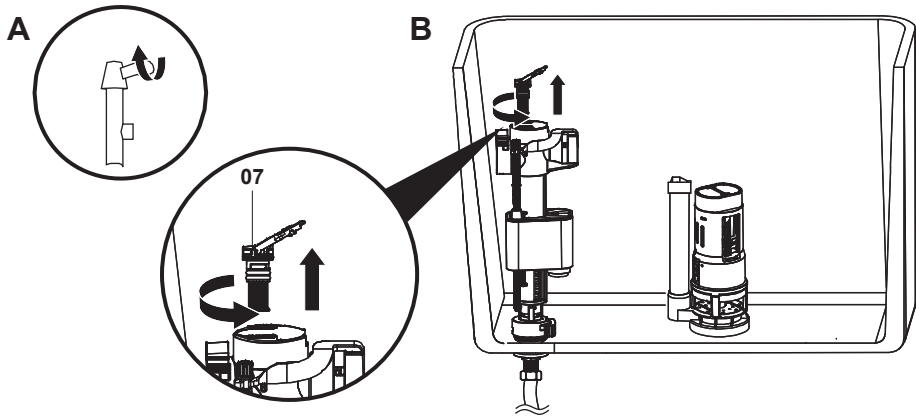
Using a tape measure, complete the following steps to ensure your fill valve is installed correctly.

1. Measure the distance between the overflow level (example shown above with the middle dotted line listed OL) to the CL marking of the new fill valve (example shown above with the top dotted line listed CL and close up image of the valve).
2. If this distance is less than 20 mm, you may need to cut or reduce the height of the flush valve overflow pipe. Please refer to your flush valve installation manual on how to do this.
3. Next measure the distance between the overflow level (example shown above with the middle dotted line listed OL) to the water level (example shown above with the bottom dotted line listed WL).
4. If this distance is less than 20 mm, please refer to step 07B on how to adjust the water level height.

## EN Care & maintenance

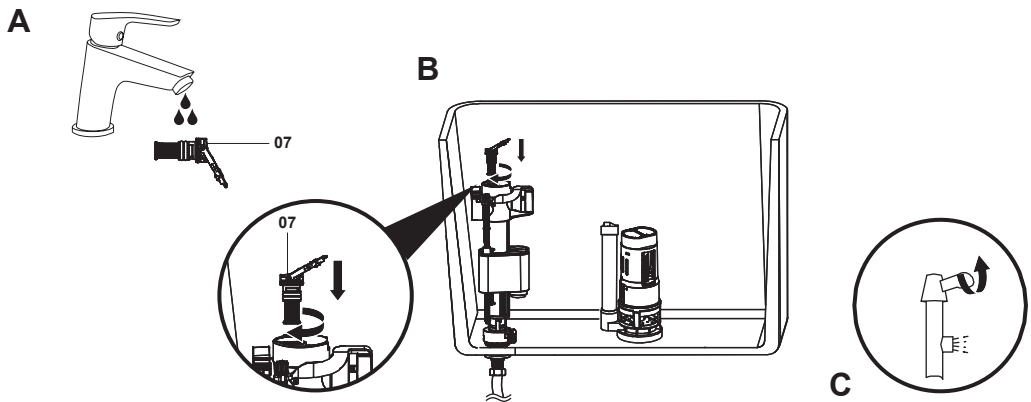
To keep your fill valve functioning correctly, it is recommended to clean the filter every 6 months.  
Follow the instruction below on how to service your valve.

# 1A



- A. Isolate the water supply (at mains or local isolation valve).
- B. Take care when removing the filter 07.

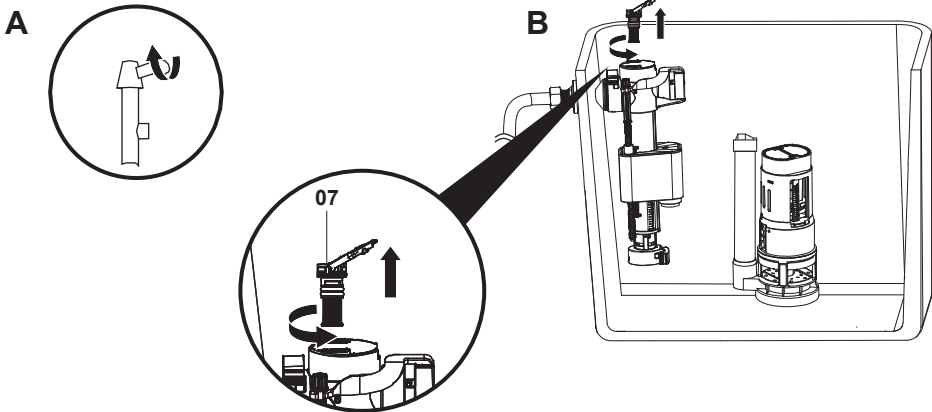
# 2A



- A. Wash filter 07 under tap water.
- B. Take care when refitting the filter 07 back to the valve.
- C. Turn the water supply back on.

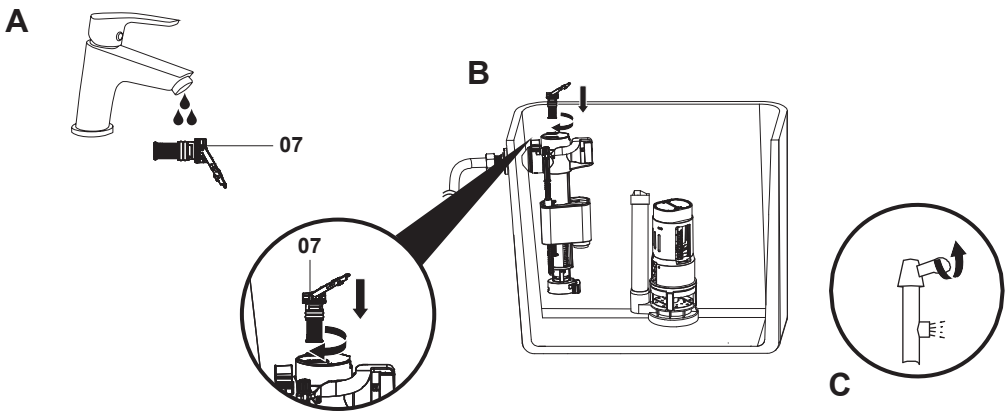
To keep your fill valve functioning correctly, it is recommended to clean the filter every 6 months. Follow the instruction below on how to service your valve.

# 1B



- A. Isolate the water supply (at mains or local isolation valve).
- B. Take care when removing the filter 07.

# 2B



- A. Wash filter 07 under tap water.
- B. Take care when refitting the filter 07 back to the valve.
- C. Turn the water supply back on.

---

**Manufacturer:**

**UK Manufacturer:**

Kingfisher International Products Limited,  
1 Paddington Square, London, W2 1GG,  
United Kingdom

**EU Manufacturer:**

Kingfisher International Products B.V.,  
Rapenburgerstraat 175E,  
1011 VM Amsterdam,  
The Netherlands

**EN** [www.diy.com](http://www.diy.com)  
[www.screwfix.com](http://www.screwfix.com)  
[www.screwfix.ie](http://www.screwfix.ie)

**To view instruction manuals online,  
visit [www.kingfisher.com/products](http://www.kingfisher.com/products)**