

# HOW TO INSTALL:

Always select the lowest torque setting on your drill used to install your EasiBleed.

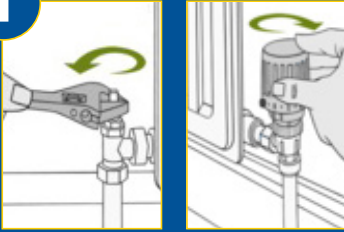
Always drill the EasiBleed in perfectly straight.

Always ensure your radiator is in good condition before installing your EasiBleed.

Do not over tighten your EasiBleed.

Please note: All instructions must be followed when installing our product to ensure a perfect seal to the radiator.

1



Close off both your radiator valves.  
(Although not necessary, we do recommend this)

2



Choose a suitable location on the top of the radiator  
to install the EasiBleed Valve.

3

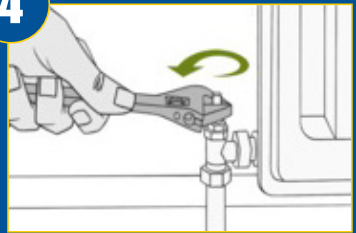


Use a cordless drill with 10mm socket head to  
safely screw the EasiBleed into the radiator  
until the specially made washer meets the radiator  
and forms the water tight seal. No pilot  
hole is needed in the radiator.

EasiBleed is a self drilling air vent.

NOTE: Small droplets of water can be  
visible on installation.

4



Open both the radiator valves.

5



Use your new EasiBleed valve just like a normal  
radiator air vent to release the air in your radiator.

EasiBleed do recommend that you use a qualified person to  
fit this part.