



Kitchen Mixer Taps

Plumbing Systems and Water Pressure

All Products are suitable for all UK water authority supply pressures. If the taps are installed at low pressure (Tank Fed) then the minimum height from the outlet of the nozzle to the underside of the cold tank should be at least 1.8 metres to ensure adequate performance.

These taps should be installed in accordance with the current water regulations. Any claims that may arise will be dealt with on the basis that isolating valves are fitted.

Water Pressure

We recommend a minimum water pressure of 0.5 Bar and a maximum of 5 Bar to ensure efficient operation of your product.

Cleaning / General Care

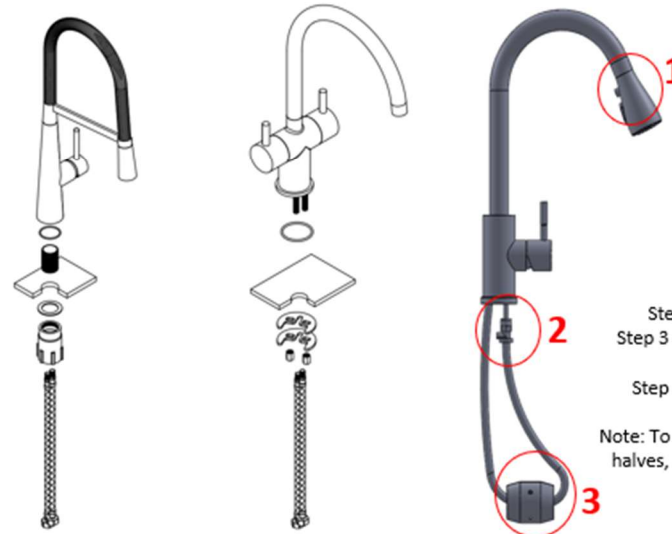
Chrome and Gold Plated finishes should be cleaned with warm water and a soft cloth, rinsed then immediately buffed with a dry soft cloth. Under no circumstances must any aggressive or abrasive cleaning agents be used. The use of any abrasive agents or materials will invalidate the guarantee.

Installation Guide

Follow these instructions before fitting the tap detailed in this guide

Prior to installation, please check that your plumbing system is adequate and that all pipes have been sufficiently flushed through.

1. Turn off the mains cold water supply. The mains stopcock is usually found where the supply enters the building.
2. It is also recommended that any hot water heating systems are turned off.
3. Drain the hot and cold water systems. To ensure complete drainage, Open all taps.
4. Position the tap over the hole, ensuring the rubber seal is positioned properly between the tap body and the sink, Or in the case that the product includes a base plate ensuring the rubber seal is between the base plate and the sink.



5. Using the fixing nut(s) supplied, screw the short threaded bar(s) into the holes(s) on the underneath of the body. Next, screw the flexi tails into each of the other holes (ensure these are screwed in firmly). Please make sure the threaded bar(s) are fully through the sink hole.

6. Place the rubber bracket gasket over the threaded bar(s) along with the brass bracket and locking nut(s) and tight up. **DO NOT OVER TIGHTEN.**

7. In the case of using black fixing nut and threaded tail as fixing kits, please fix the threaded tail to the bottom of the tap body and pass it through the fixing hole on the worktop and tighten it.

8. Tip: In order to help firm tightening of the tap to the worktop, you can position the tap about 90 degrees anti-clockwise away from the normal position when tightening the black fixing nut by had underneath the worktop. Then grasp the tap and turn clockwise until it sits straight in a normal position. This will greatly help the tightening of the tap to the worktop.

9. Connection to the water supply is usually achieved using flexible tap connectors. **PLEASE NOTE:** To comply with water regulations, isolating valves should be fitted in the pipework beneath the tap. This enables each supply to be independently isolated which makes it easier to service and/or remove the tap. Once all the connections are made, the mains water supply can be turned back on and the system refilled.

10. Now check for any leaks. At this stage it is recommended that the whole system be flushed to remove any foreign matter, also check the seating is free from swarf, as this will interfere with the water seal between the valve and the seating. All water heating systems may now be turned on.

Weighted Hose Installation

Step 1 – Ensure the spray head is fitted securely into the spout

Step 2 – Ensure the end of the pre-installed hose is attached to the push fit connector

Step 3 – Pull the hose down to make a loop and place the weight in the position shown in the image below

Step 4 – Test the weight placement by pulling down on the tap head as far as you can and release, the tap head should return to the spout

Note: To attach the weight to the hose, unscrew the two halves and line hose in between the two halves, ensuring the weight is in the correct position. Then screw the two halves back together tightly and ensure the weight can't come loose

Contact Customer service team on 01724847397 Option 2