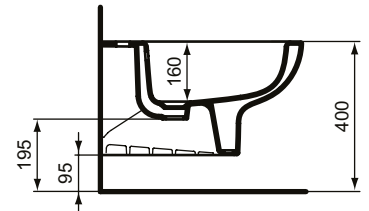
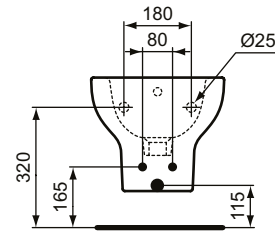




Ideal Standard

## BIDET

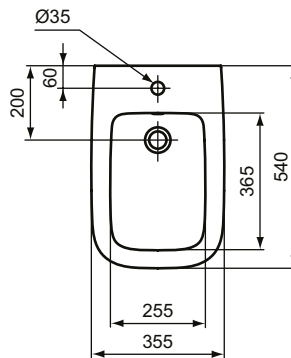
ilifeA



Article-No.: T471801

### Wall-hung bidet

Ideal Standard i.life A wall-mounted bidet with one tap hole.



Colour: 01 - White

#### More product details:

Type:	Standard projection
Mounting:	Wall-hung
Style:	Contemporary
Tap Holes:	1
Net Weight (kg):	18
Material:	Vitreous china
Designer:	Palomba Serafini Associati
Height (mm):	305
Width (mm):	355
Depth (mm):	540
Certificate Number:	EN 14528
Installation:	Wall-hung