

8906/8907A/D/AD

INSTALLATION MANUAL

Intelligent Electronic Sensor Faucet

INSTALLATION MANUAL

Intelligent Electronic Sensor Faucet

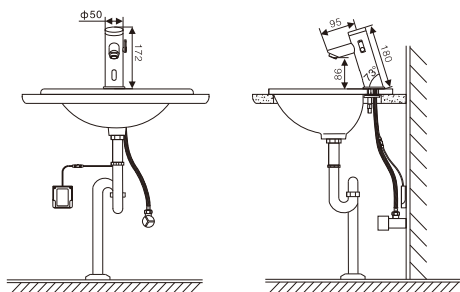
THE NOTES FOR OPEN-PACKAGE INSPECTION:

- No knocking. The inner of the product has precision electronic devices.
- No collision and rub. The main part of the products are sealed in the professional package and be careful when move or open the box.
- To make sure the product be in right run. Please count clearly all the parts of the product when you firstly open the box. If you find any mistake please get in touch with the local distributors or the manufacture.

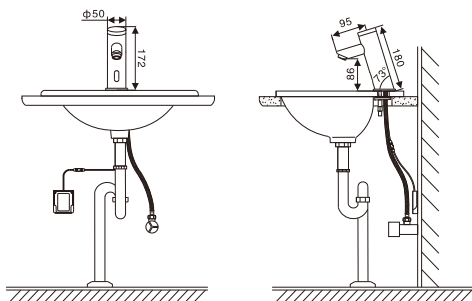
WARM REMINDER:

When you have any questions during the installation please contact with distributor or manufacture in time. If there is a little change for the part accessories we will not inform further.

8907 Instruction Diagram(Hot & Cold)



8906 Instruction Diagram(Cold water only)



Unit: mm

TECHNICAL PARAMETERS:

Name	8906	8907	
Dimension	172mmx60mmx175mm	172mmx60mmx175mm	
Style	A	D	AD
Power Supply	100-240VAC 50/60Hz	DC6V	100-240VAC 50/60Hz&DC6V
Water Pressure	0.05MPa-0.7MPa		
Water Temperature	0.1-60℃		
Environment Temperature	0.1-60℃		
Water Supplying caliber	G1/2		
Water Flow	13L/min(Dynamic pressure:0.3Mpa)	10L/min(Dynamic pressure:0.3Mpa)	
Adjustable Function	Cold Water Only	Hot and Cold Water	

CHARACTERISTIC:

Water saving:

The water will only flow when hands put within the range of the sensor, as soon as the hands remove, the flow will stop. This contributes to considerable water savings.

Hygiene:

After installation the faucet is in touch free operation, this reduces the risk of bacteria transfer.

Intelligent control:

SCM control provides a limited water flow of maximum one minute, even when fixed objects are still within range of the sensor.

Adjustable distance:

Induce distance can be adjusted according to your requirement.

Strainer device:

Strainer can be removed and clean to prevent blocking.

Check valve :

Check valve inside the faucet body.

Temperture adjustable:

Water temperture is adjustable from the faucet.

Innovate design:

Battery case is outside the faucet for a convenient changing; Integrated design; Temperture adjustable ; Waterproof connection; Mini bi-stable solenoid valve be inside which with anti-blocking device.

NOTIFICATION BEFORE INSTALLATION:

To keep the product work efficient and extend the life time please note the followings:

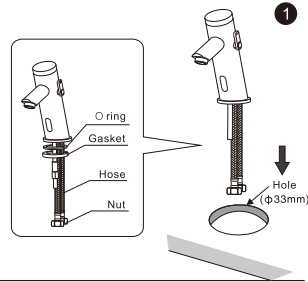
- 1.) Please read the manual and the installation guide before using.
- 2.) Use good quality battery and keep the same brand. Don't mix the new one with the former.
- 3.) Check if the water in pipe is clean or not. If dirty let them out until the water clean.
- 4.) Don't put the obstacle around the sensor distance.
- 5.) Don't install stainless steel, mirror, or other easily reflective objects, or similar photoelectric sensors face to the sensor window.
- 6.) Don't use untreated sewage.
- 7.) Don't use water or other liquid to wash.

INSTALLATION STEPS:

- 1.) As shown of picture 1, Firstly unscrew the connecting nut from the flexible hose and then take the fixed nut and the plastic washer off.
- 2.) Drill a $\phi 33$ hole on the table board that will be fixed the faucet and get the flexible hose through the fixed hole.

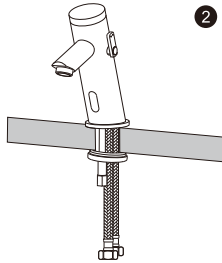
Notification:

- a.) Don't take off the o-ring.



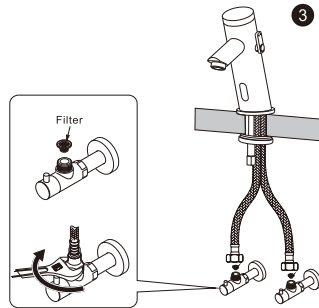
- 1.) Put the plastic washer and fixed nut through the short pipe in sequence and fixed the faucet in the table board.

- 2.) As shown of picture 2, connect the connecting nut to the flexible hose.



- 1.) As the picture 3 shown, put the filter in the angle valve and use the spanner to connect the flexible hose to the angle valve.

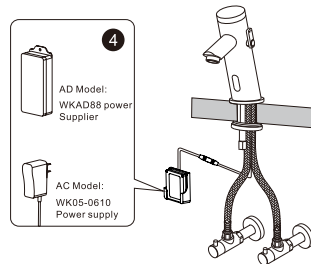
- 2.) For ZY-8906 cold water only model, only 1 flexible hose need to be connected.



- 1.) Connect the battery box /power adaptor to the faucet body. It means installation finished.

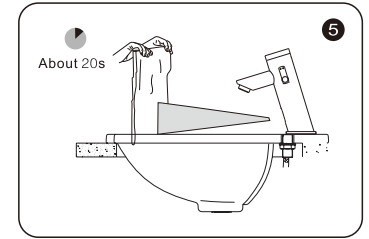
Notification:

- a.) Different type product has different battery box /power adaptor. It is subject to the real product.
- b.) Here is taking D type as example and other types reference to picture 4.



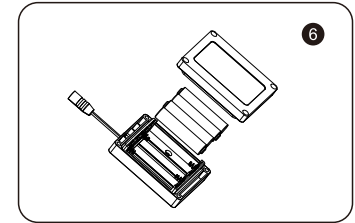
ADJUST SENSOR DISTANCE

- 1.) Indicator blink 4-5seconds when sensor is powered on. Then the sensor be in autoregulation : Sensor adjust the distance automatically when it feels the reverberation. (this process need 2 seconds).When the indicator turns off the faucet come into the work condition. You can adjust the sensor distance according to your requirement.
- 2.) Factory set distance in 16cm. If you need to adjust the distance please put the reverberation before the distance you need (10-16cm from the sensor window). Turn on the power and the product adjust automatically . the distance can be set in 20 seconds .



BATTERY REPLACEMENT (adapt to D type product)

- The indicator light will blink 3 times persecond when the battery's life nearly over.
- When the indicator blink please change the battery in time.
- Use four AA alkaline batteries. Don t use mixture of the old and the new battery.
- Unscrew the battery cap(according to picture 6) and take out the battery.
- Put the new battery according to the "+"and"-".
- Cover the cap and screw the box as before.



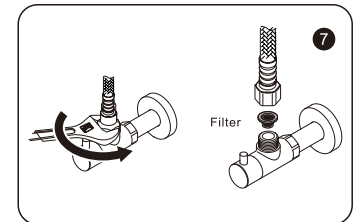
CLEAN OF THE FILTER

Clean the filter when the following condition appearance.

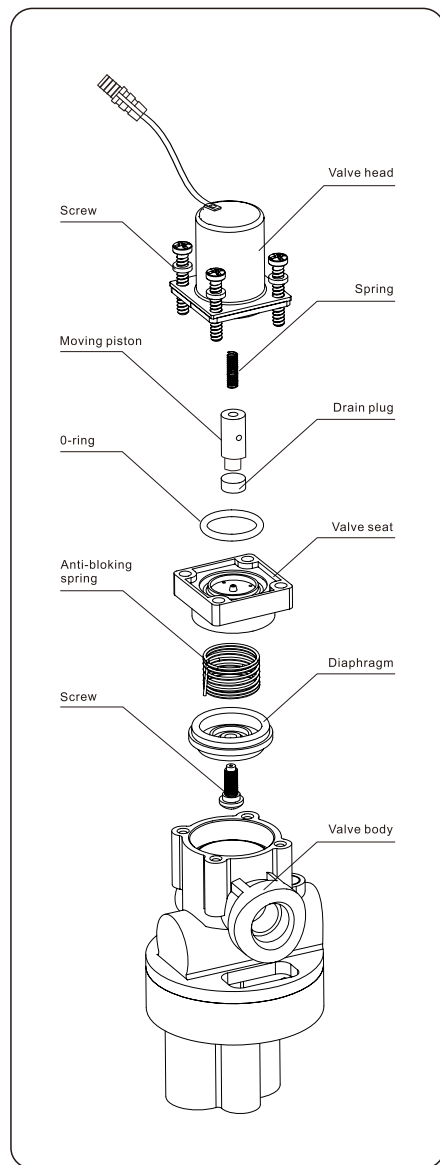
- Half years using
- The flow decrease during using

Operating steps:

- Close the inlet valves and unscrew the flexible hose and take off the filter (Take picture 7 into consideration).
- Use soft brush and water to clean the dirty and fix it back as before. Open the inlet valve.



CLEAN THE SOLENOID VALVE

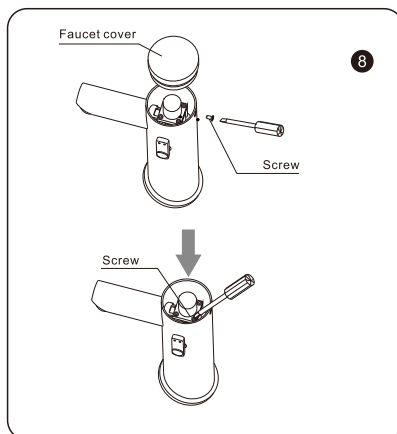


- 1.) Close the inlet valves; Unscrew the fixed nut and take the faucet cap out.
- 2.) As picture 8 shown, Unscrew four valve head lock screws.
- 3.) Take off the solenoid valve; Take out the rubber diaphragm and frame; Clean the hole of the frame.
- 4.) Check the drain plug on moving piston and make sure whether it is normal.
- 5.) Check whether there is rubbish in the seat and clean it.
- 6.) After cleaning, fix the solenoid valve into faucet by reversing step.
- 7.) Cover the faucet tap fix with screw; Open the inlet valves.

WARNING



Turn off the power if the product use AC model.
Don't miss the moving piston and the small spring.



FAULT AND MAINTENANCE:

Problem: Indicator does not work.
Failure case: Sensor failure.
Treatment: Change the sensor.
 Power not stable.
 Check the battery/power adapter.
 Sensor distance short
 Adjust distance again.
 Loose battery connecting.
 Check the battery.
 Connection off.
 Check the connection.

Problem: Indicator blink all the time.
Failure case: Sensor distance too far (slow blink).
Treatment: Adjust distance.
 Obstacle before sensor window (slow blink).
 Remove obstacle.
 Lower power (quickly blink).
 Change battery.

Problem: Doesn't flush water.
Failure case: Impurity in valve.
Treatment: Clean valve.
 Pipe blocked.
 Clean pipe.
 Valve connection off.
 Check connection.
 Not suitable water pressure.
 Adjust to standard.
 The small hole on diaphragm frame is blocked.
 Clean frame and hole.

Problem: Running water.
Failure case: Connection for solenoid valve don't work.
Treatment: Reconnect it.
 Dopant in valve. Hole of rubber be blocked.
 Clean the valve and hole.
 Valve head doesn't work.
 Change valve head.
 Battery is lack of electricity, valve in working condition.
 Change the suitable battery.

Problem: Small water flow after closing.
Failure case: Impurity in valve.
Treatment: Clean the valve.
 Not suitable water pressure.
 Adjust the pressure according to the standard.

Problem: Flow of water is small.
Failure case: Pipe is blocked.
Treatment: Clean the pipe.
 Filter is blocked.
 Clean the filter.

NOTICE:

- 1.) To avoid trouble shooting, please don't tap the product as it has been installed precision electronic components and solenoid valve.
- 2.) To avoid damaging the product surface or corroding inner electric component. Please use soft cloth with neutral liquid to clean its surface, then use dry wring cloth to wipe off liquid and then make it dry with dry soft cloth. Don't use water to flush it or use detergent, which includes massive powder, or something with high acidity, alkalinity or nylon brush etc. Especially note that don't damage glassy cover of sensed window to avoid reducing the sensitivity.

QUALITY GUARANTEE:

For guarantee please refer to the terms and conditions of supply for your country.