

Thank you for purchasing this light fitting. Please read the instructions carefully before use to ensure safe and satisfactory operation of this product. Please keep these instructions for future reference.

**Warnings!**

This is a Class 2 Double insulated product and must not be connected to earth. Please read these instructions carefully before commencing any work. It is recommended that this fitting is installed by a qualified electrician. Install in accordance with the IEE Wiring regulations and the Building Regulations. To prevent electrocution switch off at mains supply before installing or maintaining this fitting. Ensure other persons cannot restore the electrical supply without your knowledge. If you are in any doubt, please consult a qualified electrician. This light fitting should be connected to a 5 amp fused circuit. If replacing an existing fitting, make a note of the connections. This product is suitable for indoor use only, on normal flammable surfaces.

Using a dimmer switch

This product can be dimmed when used with an LED compatible dimmer switch.

Fixing Instructions

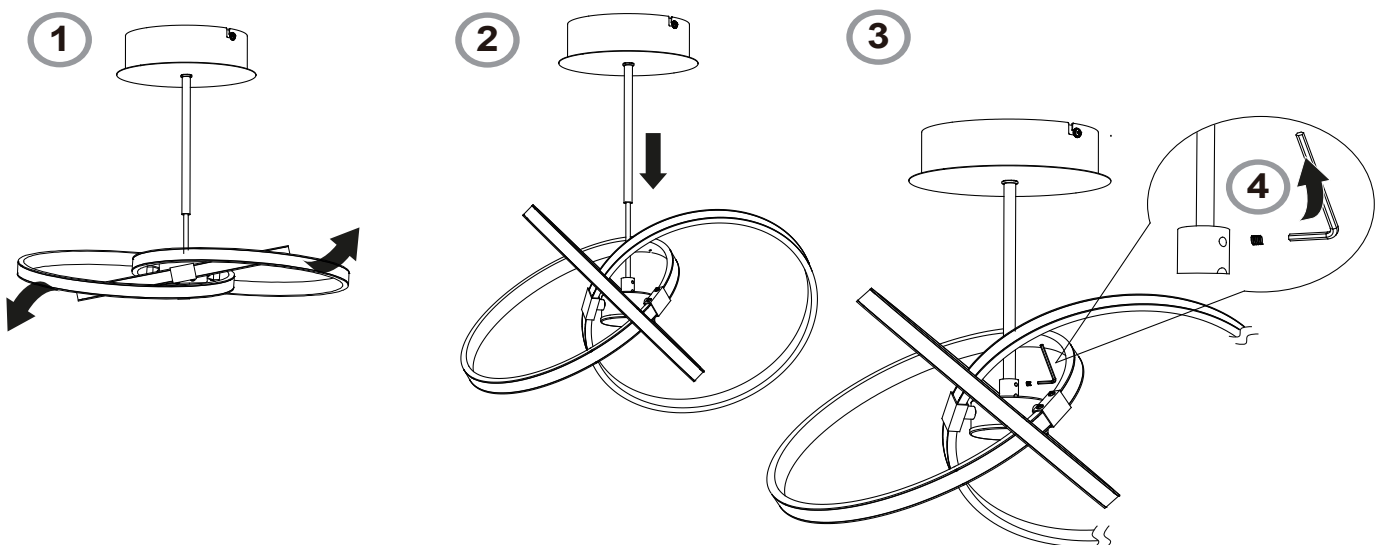
Make sure you have the following items which are required to install this light fitting:  
Electric drill and assorted drill bits, selection of cross and flat head screwdrivers & insulation tape.

**Step 1**

Before removing the existing fitting, carefully note the position of each set of wires.

**Step 2**

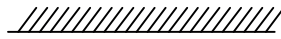
This product has been packed with stem detached and rings folded flat to reduce the packaging volume. Carefully unpack the product, swivel the rings upwards, into position (1) and push the stem into the body connector (2). It may be necessary to pull the black cable out from under the LED driver in the ceiling cup to allow the stem to push into the connector. Once the stem is fully fitted, (3) secure the stem in position by tightening the securing screw with the supplied tool (4).



Remove the fixing bracket (A) from the canopy (see diagram in step 5) and attach to the ceiling using the screws provided. Take care to avoid damaging any concealed wiring and pipes.

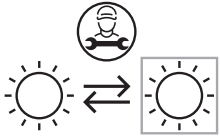
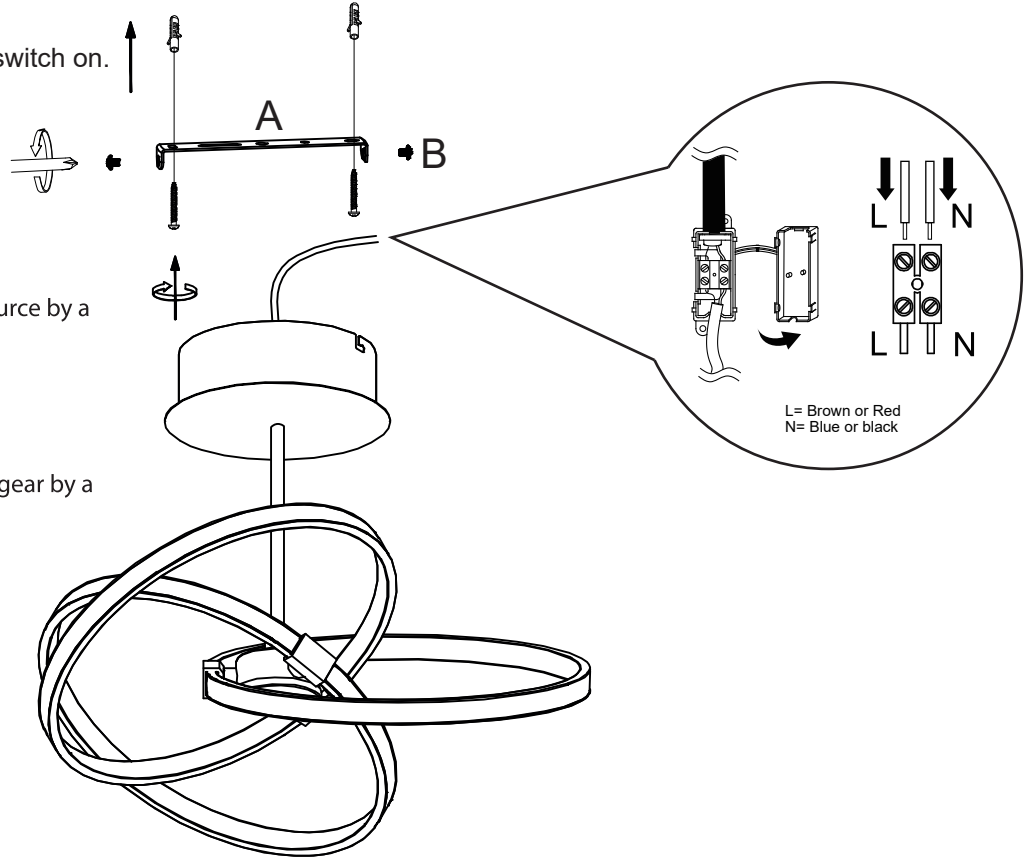
### Step 5

This product has “L” shaped fixing holes to allow easy fixing to the fixing strap. Locate the “L” slots around the small screws (B) on the fixing strap (A). Rotate the ceiling cover to attach the product to the strap. Tighten the screws to secure. Take care not to trap any wiring.

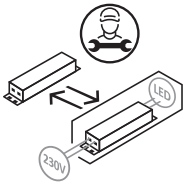


### Step 6

Replace fuse or circuit breaker and switch on. Your light is now ready for use.



Replaceable light source by a professional



Replaceable control gear by a professional

### LED driver replacement

Obtain suitable replacement driver - ensuring all technical specifications match the existing item.

The wiring is pre-attached to the LED driver.

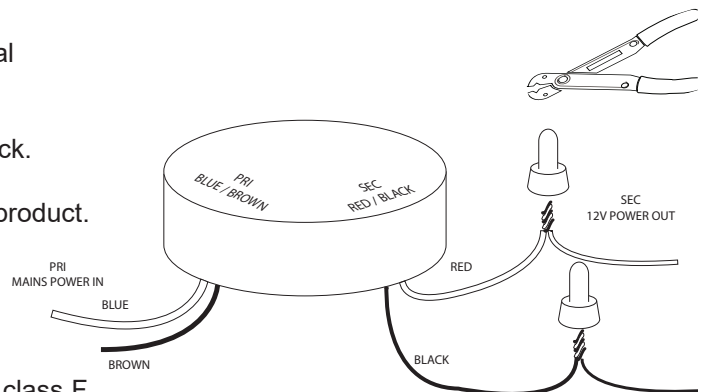
Connect the “PRI” cables to the input power terminal block.

Connect Blue cable to Neutral and Brown cable to Live.

Connect the “SEC” cables to the wires coming from the product.

Red cable to red cable and black cable to black cable.

Twist the cables together and join with approved crimp connectors and insulate with heat shrink sleeving or insulation tape.



This product contains a light source of energy efficiency class F.


For further information please visit: [www.lighting-info.co.uk/99361](http://www.lighting-info.co.uk/99361)

### Care and cleaning

Finish - We recommend cleaning with a soft dry cloth. Do not use abrasive materials as these will damage the finish.

### Safety Information

For your safety, always switch off the supply before cleaning. Always take care when handling glass parts to avoid injury in case of breakage.

 Waste electrical products should not be disposed of with household waste. Please recycle where facilities exist. Check with your Local Authority or retailer for recycling advice.

We have taken great care to ensure that this product reaches you in perfect condition. However, should any parts be damaged or missing please access our website: [www.poolelighting.com](http://www.poolelighting.com) to request spare parts or please call our Product Helpline on (01202) 690945.

We will despatch to you, within 7 working days, your missing/damaged part. When phoning please ensure you have the following information available: Name and Address, Daytime Telephone Number, Date of Purchase, Product Reference number or barcode number (inside ceiling cover or on box label), Description of Missing/Damaged Part. This does not affect your statutory rights.

Manufactured by: Poole Lighting Ltd.

UK: BH17 7BY

EU: 1, Gnarrenburg, 27442