

Commissioning

- Gently push the product into the wall, taking care not to trap any wiring.
- Replace fuse or circuit breaker and switch on. Your light is now ready for use.

Fitting / Replacing Bulbs

This system contains replaceable parts that can be replaced by the end user.

Care and Cleaning

We recommend cleaning with a soft cloth.
Do not use solvents or abrasive cleaners as these could damage the finish.

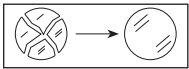
Recycling Advice



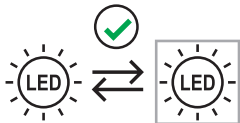
Waste electrical products should not be disposed of with household waste. Please recycle where facilities exist. Check with your Local Authority or retailer for recycling advice.

Safety Information

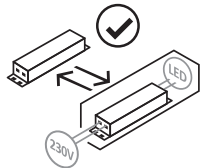
For your safety, always switch off the supply before cleaning.



The shade must be replaced immediately should the shade become cracked or damaged. This fitting must not be used without the shade in place.



Replaceable (LED only) light source by an end-user



Replaceable control gear by an end-user

Obtain new LED module and replace with the failed unit by following the installation steps overleaf.

This product contains a light source of energy efficiency class F.

LED Brick Light

213PP



UK Manufacturer:
Kingfisher International Products Limited,
3 Sheldon Square, London, W2 6PX,
United Kingdom.

EU Manufacturer:
Kingfisher International Products B.V.
Rapenburgerstraat 175E,
1011 VM Amsterdam, The Netherlands.

03/11/21



Thank you for purchasing this light fitting.
Please read the instructions carefully before use to ensure safe and satisfactory operation of this product. Please retain these instructions for future reference.

Warning

This is a Class II product and must not be earthed.

Please read these instructions carefully before commencing any work.

This unit must be fitted by a competent and qualified electrician.

Install in accordance with IEE Wiring regulations and current Building Regulations.

To prevent electrocution switch off at mains supply before installing or maintaining this fitting. Ensure other persons cannot restore the electrical supply without your knowledge. If you are in any doubt, please consult a qualified electrician.

This light fitting should be connected to a fused circuit.

If replacing an existing fitting make a careful note of the connections.

This system contains non-replaceable parts and cannot be serviced. If damage occurs the part should be scrapped.


Waste electrical products should not be disposed of with household waste. Please recycle where facilities exist. Check with your local authority or retailer for recycling advice.

This product is rated at IP65

This product is not suitable for location in or near a marine environment.

This product is not suitable for dimming.

Specification

Voltage:	240V 50Hz a.c.
Class:	II (Double Insulated) 
Lamp:	4.3W LED Module - 6500K/280lm
IP rating:	65

Layout

- Plan the desired layout of this fitting carefully, ensuring the cables will reach the distance between the junction box and the light fitting.
- Avoid locating any cables in positions that would cause a hazard. Position cables and outdoor rated junction boxes (not supplied) away from areas where they may be at risk from being cut, trapped or damaged.
- We recommend that you use H05RN-F specification cable (not supplied) which is an outdoor grade, rubber sheathed cable. The mains supply cable must have a minimum cross sectional area of 1.0mm²
- Cables must be protected using suitable conduit or plastic trunking.

Installation

Existing fittings must be completely removed before installation of a new product. Before removing the existing fitting, **carefully note the position of each set of wires**

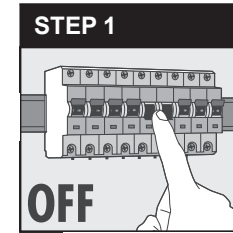
- The product comes with a housing unit that must be fitted into the hole prior to any wiring taking place.

- Cut the mounting hole for the unit taking care not to damage any pipes or mains cables beneath the mounting surface.

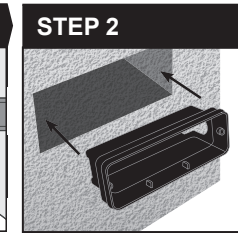
Cutout
184mm x 62mm

Void Depth
60mm

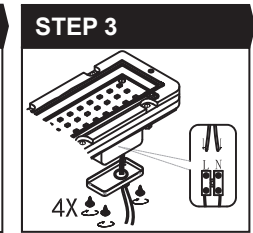
- Fit the housing into position and secure. This surround may be cemented in position. Wait until the cement has set before continuing with the installation.



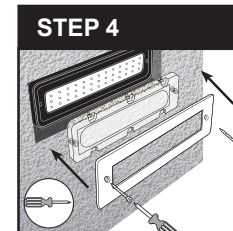
Switch off the power supply at the consumer unit or fuse box.



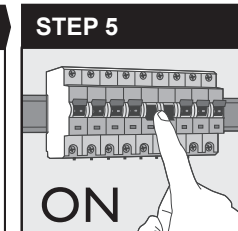
Insert and secure the Brick Light outer casing.



Feed power cables through rubber grommet, connect to the terminal block inside the fitting. Refer to Wiring below



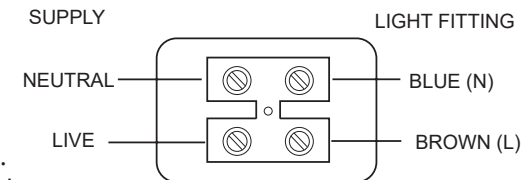
Fix in place the clear lens and metal outer frame using the screws provided.



Switch on the power supply at the main fuse box and test fitting.

Wiring

- Remove the terminal box cover and set aside for refitting later. Having identified the wiring from your existing fitting, connect to the terminals as shown on right:
- Refit the cover in place and refit the screws. Adjust the cable to suit and tighten the gland to maintain the IP rating of the product.



Check That

- You have correctly identified the wires.
- The connections are tight.
- No loose strands have been left out of the connection block.
- Refit the cover and secure the four screws.