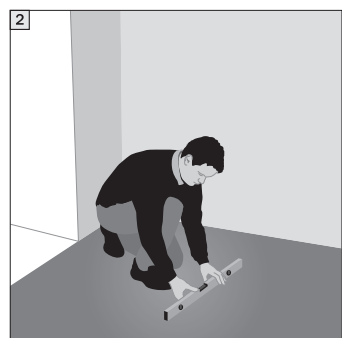


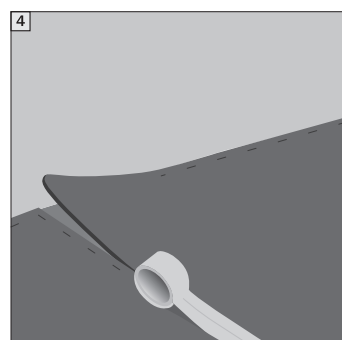
Laying instruction •



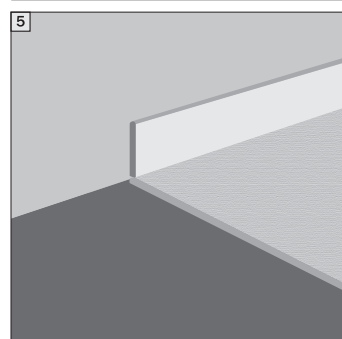
1 All construction dampness for example newly applied screed must be completely dried out before installation. The surface should be clean, flat, level (<3 mm over 2 m area) and dry.



3 Lay the entire room with the underlay.



4 Cut and lay using spray adhesive or staples to secure to the floor. All seams should be joined using underlay tape prior to the carpet being fitted.



5 Lay your carpet on the underlay.
Suitable for use with gripper and woven backed carpet or felt backed carpet for added comfort.