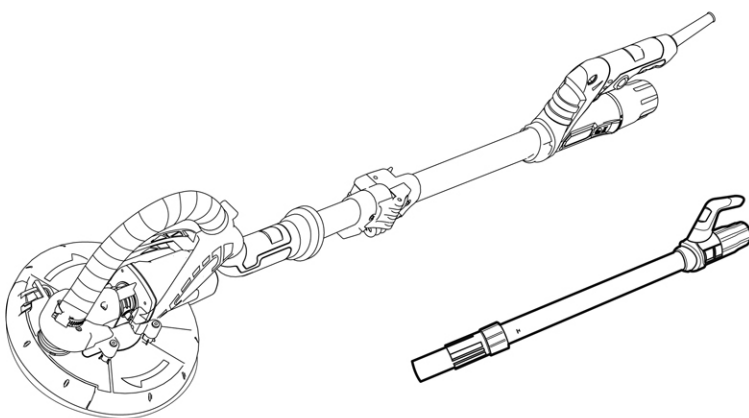


# **TITAN**

## **710W**

# **Drywall Sander**



# **TTB625SDR**

**EAN: 5059340217420**

**WARNING:** Read the instructions before using the product!



**BX220IM**

# Let's get started...

These instructions are for your safety. Please read through them thoroughly before use and retain them for future reference.



## Getting started... 03

<b>Your product</b>	04
<b>Technical and legal information</b>	06
<b>Before you start</b>	17



## In more detail... 24

<b>Product functions</b>	25
<b>Operation</b>	29
<b>Care and maintenance</b>	32
<b>Trouble shooting</b>	34
<b>Recycling and disposal</b>	35
<b>Guarantee</b>	36
<b>EC declaration of conformity</b>	37

## Safety warnings

### General power tool safety warnings



**WARNING!** Read all safety warnings and all instructions. Failure to follow the warnings and instructions may result in electric shock, fire and/or serious injury. Save all warnings and instructions for future reference. The term “power tool” in the warnings refers to your mains-operated (corded) power tool or battery-operated (cordless) power tool.

### Work area safety

1. **Keep work area clean and well lit.** Cluttered or dark areas invite accidents.
2. **Do not operate power tools in explosive atmospheres, such as in the presence of flammable liquids, gases or dust.** Power tools create sparks which may ignite the dust or fumes.
3. **Keep children and bystanders away while operating a power tool.** Distractions can cause you to lose control.

### Electrical safety

1. **Power tool plugs must match the outlet. Never modify the plug in any way. Do not use any adapter plugs with earthed (grounded) power tools.** Unmodified plugs and matching outlets will reduce risk of electric shock.
2. **Avoid body contact with earthed or grounded surfaces, such as pipes, radiators, ranges and refrigerators.** There is an increased risk of electric shock if your body is earthed or grounded.

3. **Do not expose power tools to rain or wet conditions.** Water entering a power tool will increase the risk of electric shock.
4. **Do not abuse the cord. Never use the cord for carrying, pulling or unplugging the power tool. Keep cord away from heat, oil, sharp edges or moving parts.** Damaged or entangled cords increase the risk of electric shock.
5. **When operating a power tool outdoors, use an extension cord suitable for outdoor use.** Use of a cord suitable for outdoor use reduces the risk of electric shock.
6. **If operating a power tool in a damp location is unavoidable, use a residual current device (RCD) protected supply.** Use of an RCD reduces the risk of electric shock.

### Personal safety

1. **Stay alert, watch what you are doing and use common sense when operating a power tool. Do not use a power tool while you are tired or under the influence of drugs, alcohol or medication.** A moment of inattention while operating power tools may result in serious personal injury.
2. **Use personal protective equipment. Always wear eye protection.** Protective equipment such as dust mask, non-skid safety shoes, hard hat, or hearing protection used for appropriate conditions will reduce personal injuries.
3. **Prevent unintentional starting. Ensure the switch is in the off-position before connecting to power source and/or battery pack, picking up or carrying the tool.** Carrying power tools with your finger on the switch or energising power tools that have the switch on invites accidents.
4. **Remove any adjusting key or wrench before turning the power tool on.** A wrench or a key left attached to a rotating part of the power tool may result in personal injury.
5. **Do not overreach. Keep proper footing and balance at all times.** This enables better control of the power tool in unexpected situations.



6. **Dress properly. Do not wear loose clothing or jewellery. Keep your hair, clothing and gloves away from moving parts.** Loose clothes, jewellery or long hair can be caught in moving parts.
7. **If devices are provided for the connection of dust extraction and collection facilities, ensure these are connected and properly used.** Use of dust collection can reduce dust-related hazards.

### Power tool use and care

1. **Do not force the power tool. Use the correct power tool for your application.** The correct power tool will do the job better and safer at the rate for which it was designed.
2. **Do not use the power tool if the switch does not turn it on and off.** Any power tool that cannot be controlled with the switch is dangerous and must be repaired.
3. **Disconnect the plug from the power source and/or the battery pack from the power tool before making any adjustments, changing accessories, or storing power tools.** Such preventive safety measures reduce the risk of starting the power tool accidentally.
4. **Store idle power tools out of the reach of children and do not allow persons unfamiliar with the power tool or these instructions to operate the power tool.** Power tools are dangerous in the hands of untrained users.
5. **Maintain power tools. Check for misalignment or binding of moving parts, breakage of parts and any other condition that may affect the power tool's operation. If damaged, have the power tool repaired before use.** Many accidents are caused by poorly maintained power tools.
6. **Keep cutting tools sharp and clean.** Properly maintained cutting tools with sharp cutting edges are less likely to bind and are easier to control.
7. **Use the power tool, accessories and tool bits etc. in accordance with these instructions, taking into account the working conditions and the work to be performed.** Use of the power tool for operations different from those intended could result in a hazardous situation.

### Service

1. **Have your power tools serviced by a qualified repair person using only identical replacement parts.** This will ensure that safety of the power tool is maintained.

## Safety instructions for all operations

### Safety warnings common for sanding operation

1. **This power tool is intended to function as a sander. Read all safety warnings, instructions, illustrations and specifications provided with this power tool.** Failure to follow all instructions listed below may result in electric shock, fire and/or serious injury.
2. **Operations such as grinding, wire brushing, polishing or cutting-off are not recommended to be performed with this power tool.** Operations for which the power tool was not designed may create a hazard and cause personal injury.
3. **Do not use accessories which are not specifically designed and recommended by the tool manufacturer.** Just because the accessory can be attached to your power tool, it does not assure safe operation.
4. **The rated speed of the accessory must be at least equal to the maximum speed marked on the power tool.** Accessories running faster than their rated speed can break and fly apart.
5. **The outside diameter and the thickness of your accessory must be within the capacity rating of your power tool.** Incorrectly sized accessories cannot be adequately guarded or controlled.
6. **Threaded mounting of accessories must match the grinder spindle thread. For accessories mounted by flanges, the arbour hole of the accessory must fit the locating diameter of the flange.** Accessories that do not match the mounting hardware of the power tool will run out of balance, vibrate excessively and may cause loss of control.
7. **Do not use a damaged accessory. Before each use inspect the accessory such as abrasive wheels for chips and cracks, backing pad for cracks, tear or excess wear, wire brush for loose or cracked wires. If power tool or accessory is dropped, inspect for damage or install an undamaged accessory. After inspecting and installing an accessory, position yourself and bystanders away from the plane of the rotating accessory and run the power tool at maximum no-load speed for one minute.** Damaged accessories will normally break apart during this test time.

8. **Wear personal protective equipment.** Depending on application, use **face shield, safety goggles or safety glasses.** As appropriate, wear **dust mask, hearing protectors, gloves and workshop apron capable of stopping small abrasive or workpiece fragments.** The eye protection must be capable of stopping flying debris generated by various operations. The dust mask or respirator must be capable of filtering particles generated by your operation. Prolonged exposure to high intensity noise may cause hearing loss.
9. **Keep bystanders a safe distance away from work area. Anyone entering the work area must wear personal protective equipment.** Fragments of workpiece or of a broken accessory may fly away and cause injury beyond immediate area of operation.
10. **Position the cord clear of the spinning accessory.** If you lose control, the cord may be cut or snagged and your hand or arm may be pulled into the spinning accessory.
11. **Never lay the power tool down until the accessory has come to a complete stop.** The spinning accessory may grab the surface and pull the power tool out of your control.
12. **Do not run the power tool while carrying it at your side.** Accidental contact with the spinning accessory could snag your clothing, pulling the accessory into your body.
13. **Regularly clean the power tool's air vents.** The motor's fan will draw the dust inside the housing and excessive accumulation of powdered metal may cause electrical hazards.
14. **Do not operate the power tool near flammable materials.** Sparks could ignite these materials.
15. **Do not use accessories that require liquid coolants.** Using water or other liquid coolants may result in electrocution or shock.

## Further safety instructions for all operations

### Kickback and related warnings

Kickback is a sudden reaction to a pinched or snagged rotating wheel, backing pad, brush or any other accessory. Pinching or snagging causes rapid stalling of the rotating accessory which in turn causes the uncontrolled power tool to be forced in the direction opposite of the accessory's rotation at the point of the binding.

For example, if an abrasive wheel is snagged or pinched by the workpiece, the edge of the wheel that is entering into the pinch point can dig into the surface of the material causing the wheel to climb out or kick out. The wheel may either jump toward or away from the operator, depending on direction of the wheel's movement at the point of pinching. Abrasive wheels may also break under these conditions.

Kickback is the result of power tool misuse and/or incorrect operating procedures or conditions and can be avoided by taking proper precautions as given below.

1. **Maintain a firm grip on the power tool and position your body and arm to allow you to resist kickback forces. Always use auxiliary handle, if provided, for maximum control over kickback or torque reaction during start-up.** The operator can control torque reactions or kickback forces, if proper precautions are taken.
2. **Never place your hand near the rotating accessory.** Accessory may kickback over your hand.
3. **Do not position your body in the area where power tool will move if kickback occurs.** Kickback will propel the tool in direction opposite to the wheel's movement at the point of snagging.
4. **Use special care when working corners, sharp edges etc. Avoid bouncing and snagging the accessory.** Corners, sharp edges or bouncing have a tendency to snag the rotating accessory and cause loss of control or kickback.
5. **Do not attach a saw chain woodcarving blade or toothed saw blade.** Such blades create frequent kickback and loss of control.

## Additional safety instructions for sanding operations

### Safety warnings specific for sanding operations

1. **Do not use excessively oversized sanding disc paper. Follow manufacturers recommendations, when selecting sanding paper.** Larger sanding paper extending beyond the sanding pad presents a laceration hazard and may cause snagging, tearing of the disc or kickback.

### Vibration and noise reduction

**To reduce the impact of noise and vibration emission, limit the time of operation, use low-vibration and low-noise operating modes as well as wear personal protective equipment.**

Take the following points into account to minimise the vibration and noise exposure risks:

1. Only use the product as intended by its design and these instructions.
2. Ensure that the product is in good condition and well maintained.
3. Use correct attachments for the product and ensure they are in good condition.
4. Keep tight grip on the handles/grip surface.
5. Maintain this product in accordance with these instructions and keep it well lubricated (where appropriate).
6. Plan your work schedule to spread any high vibration tool use across a longer period of time.

### Emergency

**Familiarise yourself with the use of this product by means of this instruction manual. Memorise the safety directions and follow them to the letter. This will help to prevent risks and hazards.**

1. **Always be alert when using this product, so that you can recognise and handle risks early.** Fast intervention can prevent serious injury and damage to property.

2. **Switch off and disconnect from the power supply if there are malfunctions.** Have the product checked by a qualified professional and repaired, if necessary, before you operate it again.

### Residual risks

Even if you are operating this product in accordance with all the safety requirements, potential risks of injury and damage remain. The following dangers can arise in connection with the structure and design of this product:

1. Health defects resulting from vibration emission if the product is being used over long periods of time or not adequately managed and properly maintained.
2. Injuries and damage to property due to broken attachments or the sudden impact of hidden objects during use.
3. Danger of injury and property damage caused by flying objects.



**WARNING!** This product produces an electromagnetic field during operation! This field may under some circumstances interfere with active or passive medical implants! To reduce the risk of serious or fatal injury, we recommend persons with medical implants to consult their doctor and the medical implant manufacturer before operating this product!



**WARNING!** Some dust created by power sanding, sawing, grinding, drilling and other construction activities contains chemicals known to cause cancer, birth defects or other reproductive harm. Some examples of these chemicals are:


- Lead from lead-based paint
- Crystalline silica from bricks and cement and other masonry products
- Arsenic and chromium from chemically treated timber

Your risk from these exposures varies, depending upon how often you do this type of work. To reduce your exposure to these chemicals:

- Work in a well-ventilated area.
- Work with approved protective equipment, such as those dust masks that are specially designed to filter microscopic particles.

## Symbols

On the product, the rating label and within these instructions you will find among others the following symbols and abbreviations. Familiarise yourself with them to reduce hazards like personal injuries and damage to property.

V~	Volt, (alternating voltage)
Hz	Hertz
W	Watt
/min or min <sup>-1</sup>	Per minute
mm	Millimetre
kg	Kilogram
dB(A)	Decibel (A-rated)
m/s <sup>2</sup>	Metres per second squared
	Lock / to tighten or secure.



Unlock / to loosen.



Note / Remark.



Caution / Warning.



Read the instruction manual.



Wear hearing protection.



Wear eye protection.



Wear a dust mask.



Wear protective gloves.



This product is of protection class II. That means it is equipped with enhanced or double insulation.



The product complies with the applicable European directives and an evaluation method of conformity for these directives was done.



WEEE symbol. Waste electrical products should not be disposed of with household waste. Please recycle where facilities exist. Check with your Local Authority or local store for recycling advice.

Sww mm/yy

Code de fabrication "S" / Semaine de production "ww" / Mois de production "mm" / Année de production "20yy".

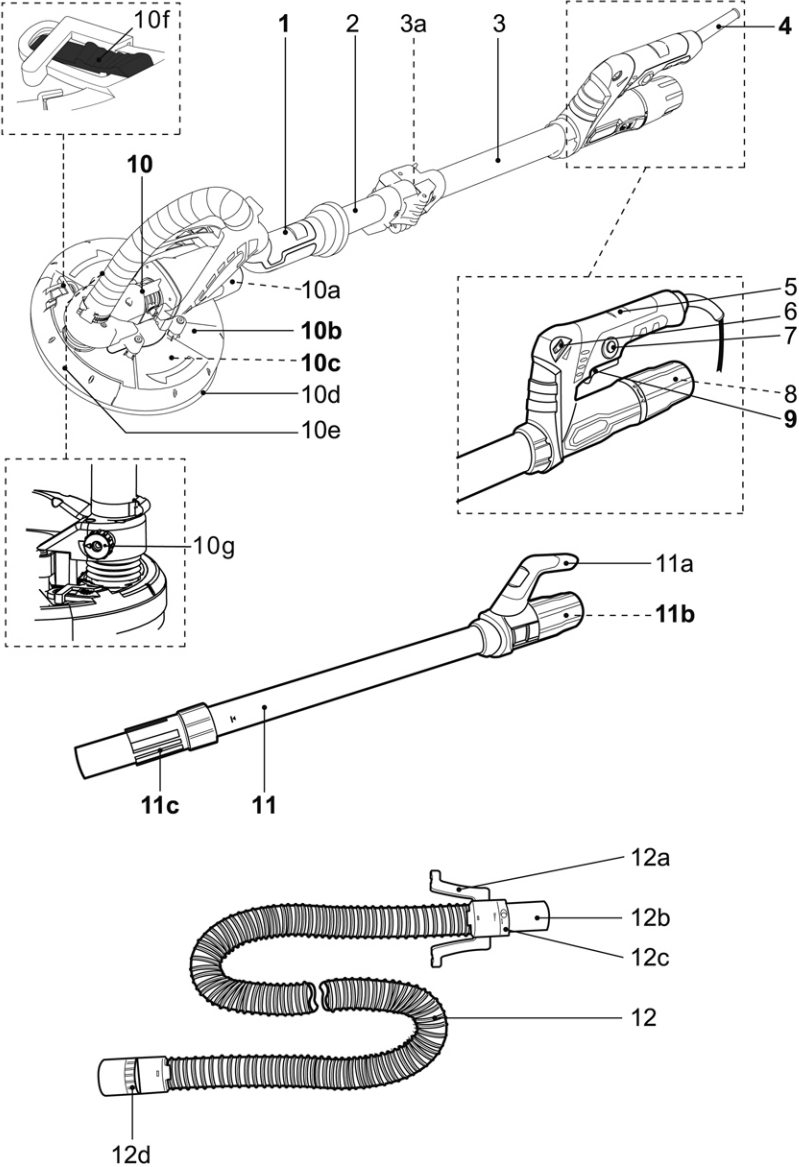


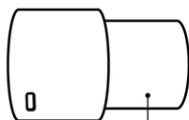
UK Conformity Assessed.



Your product

Getting started...

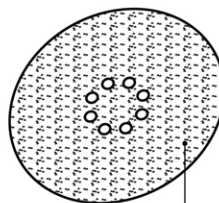




13



14



15

1. Gripping surface
2. Lower shaft
3. Upper shaft
  - a. Locking device
4. Power cord with plug
5. Main handle
6. Speed dial
7. Lock-on button
8. Dust extraction outlet (with locking sleeve)
  - a. Locking sleeve
9. On/off switch
10. Machine head
  - a. Air vents
  - b. Guard
  - c. Base plate  $\varnothing 215\text{mm}$ (Max:3500 /min)
  - d. Brush-type skirt
  - e. Guard segment
  - f. Unlock button
  - g. Adjusting knob for ceiling suction power
11. Extension shaft
  - a. Rear handle
  - b. Dust extraction outlet (with adjusting sleeve)
  - c. Sleeve
12. Vacuum hose
  - a. Handle
  - b. Connector (pre-assembled) ( $\varnothing 38\text{ mm}$ )
  - c. Suction power adjustment ring
  - d. Vacuum adaptor (pre-assembled) ( $\varnothing 47\text{ mm}$ )
13. Vacuum adaptor ( $\varnothing 35\text{ mm}$ )
14. Hex key
15. Sanding paper  $\varnothing 225\text{ mm}$   
(120# x 2, 180# x 2, 240# x 2)

## Technical specifications

### General

- |  |                  |
|--|------------------|
| > <b>Rated voltage, frequency</b>        | 230 - 240V~ 50Hz |
| > <b>Rated power input</b>               | 710W             |
| > <b>Rated speed n</b>                   | 1500 /min        |
| > <b>Adjustable speed range</b>          | 600-1500 /min    |
| > <b>Screw thread size</b>               | M6               |
| > <b>Protection class</b>                | II □             |
| > <b>Weight</b>                          | approx. 10.6 kg  |
| > <b>Max. length w/o extension shaft</b> | approx. 1100 mm  |
| > <b>Max. length w/ extension shaft</b>  | approx. 1650 mm  |

### Sanding base plate/paper

- |                                  |                  |
|----------------------------------|------------------|
| > <b>Sanding paper fixing</b>    | Hook & loop      |
| > <b>Sanding paper dimension</b> | approx. Ø 225 mm |
| > <b>Base plate dimension</b>    | approx. Ø 215 mm |

### Sound values

- |   |          |
|---|----------|
| > <b>Sound pressure level <math>L_{pA}</math></b>             | 84 dB(A) |
| > <b>Sound power level <math>L_{WA}</math></b>                | 95 dB(A) |
| > <b>Uncertainty <math>K_{pA}</math>, <math>K_{WA}</math></b> | 3 dB(A)  |

### Hand arm vibration values

- |   |                       |
|---|-----------------------|
| > <b>Disc sanding <math>a_{h,DS}</math></b> | 3.03 m/s <sup>2</sup> |
| > <b>Uncertainty K</b>                      | 1.5 m/s <sup>2</sup>  |

The sound values have been determined according to noise test code given in EN 60745-1, using the basic standards EN ISO 3744 and EN ISO 11203.

The sound intensity level for the operator may exceed 80 dB(A) and ear protection measures are necessary.

The declared vibration value has been measured in accordance with a standard test method (according to EN 60745-2-3) and may be used for comparing one product with another. The declared vibration value may also be used in a preliminary assessment of exposure.



**WARNING!** Depending on the actual use of the product the vibration values can differ from the declared total. Adopt proper measures to protect yourself against vibration exposures. Take the whole work process including times the product is running under no load or switched off into consideration.

Proper measures include among others regular maintenance and care of the product and accessories, keeping hands warm, periodical breaks and proper planning of work processes.

RATING LABEL EXPLANATION  
TTB625SDR=MODEL NUMBER  
TT=TITAN  
B=240V AC  
625=Version number  
SDR=Drywall Sander

## Unpacking

1. Unpack all parts and lay them on a flat, stable surface.
2. Remove all packing materials and shipping devices, if applicable.
3. Make sure the delivery contents are complete and free of any damage. If you find that parts are missing or show damage do not use the product but contact your dealer. Using an incomplete or damaged product represents a hazard to people and property.
4. Ensure that you have all the accessories and tools needed for assembly and operation. This also includes suitable personal protective equipment.



**WARNING! The product and the packaging are not children's toys! Children must not play with plastic bags, sheets and small parts! There is a danger of choking and suffocation!**

## You will need

(items not supplied)

Suitable personal protective equipment

Dust extraction device (e. g. vacuum cleaner)

(items supplied)

5mm Hex key **(14)**

Sanding paper Ø225mm (x15)**(15)**

## Assembly



**WARNING! The product must be fully assembled before operation! Do not use a product that is only partly assembled or assembled with damaged parts!**

**Follow the assembly instructions step-by-step and use the pictures provided as a visual guide to easily assemble the product!**

**Do not connect the product to power supply before it is completely assembled!**

## Lower and upper shaft

1. Fully unfold the upper shaft **(3)** in the direction against the lower shaft **(2)** (Fig. 1).

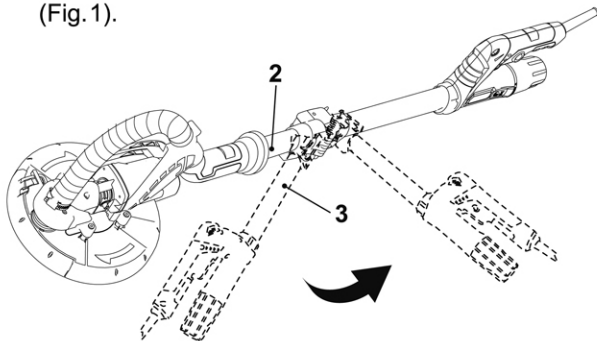


Fig. 1

2. Secure the connection with the locking device **(3a)** (Fig. 2).

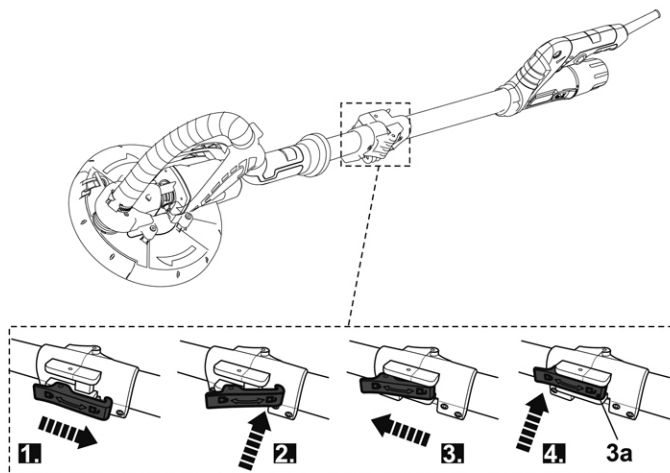


Fig. 2

**Extension shaft (optional)**

Use the extension shaft (11) according to the intended operation for higher work surfaces.

1. Loosen the sleeve on the dust extraction outlet (8) of the upper shaft (3). Do not remove the sleeve from the outlet (Fig. 3, step 1).
2. Align the rear handle (11a) with the main handle (5) and insert the sleeve (11c) on the extension shaft (11) into the outlet (8) with a twist motion all the way to the stop (Fig. 3, step 2).

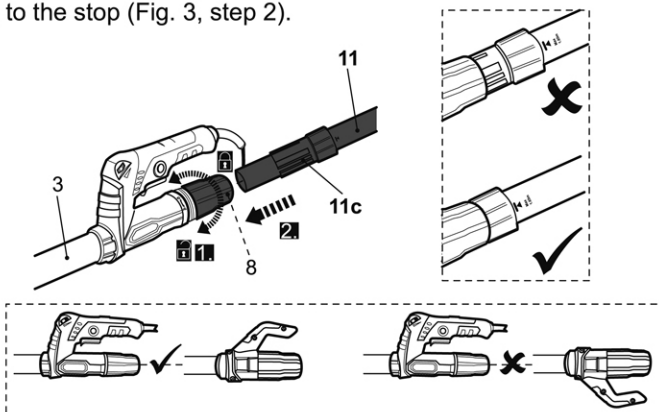


Fig. 3

2. Adjust the length of the extension shaft (11) if necessary. Pay attention to the marking "Max 1.65 m" on the extension shaft. Tighten the sleeve (8) after assembling/adjusting the extension shaft (Fig. 4).

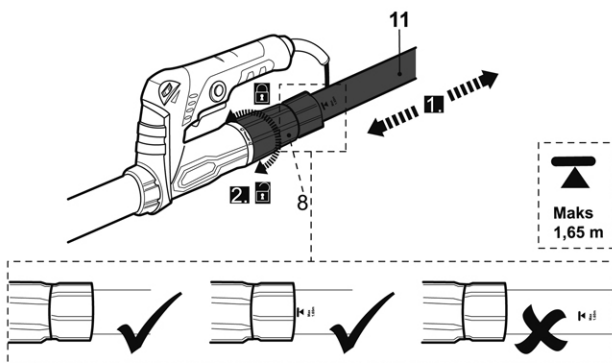


Fig. 4

## Sanding paper

Sanding papers are available with different grain sizes (grit). The grain size is indicated with a number on the back side of the sanding paper, the higher the number, the finer the grain size.

1. Only use suitable sanding papers in terms of application and size.
2. Replace worn or damaged sanding papers immediately.
3. Start with a coarse sanding paper and finish with a fine-grained one to achieve a satisfactory result.

### Hook-and-loop system

With the hook-and-loop system, sanding papers are simply pressed on the base plate and removed by pulling off.

### Attaching

1. Align the hole pattern of the sanding paper **(15)** with the one in the base plate **(10b)** before attaching the sanding paper **(15)** to the plate to ensure efficient dust extraction and a satisfactory result.
2. Slightly press the sanding paper **(15)** to fix it to the base plate **(10b)** (Fig. 5).

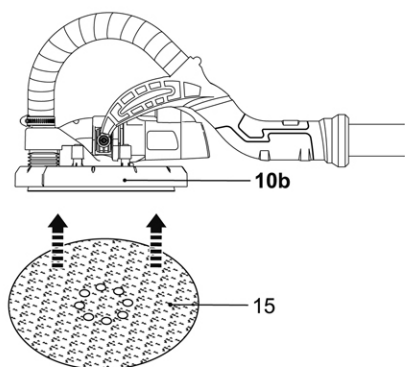


Fig. 5

## Removing/Replacing

1. Grip one corner of the sanding paper (**15**) and pull it off the base plate (**10b**) (Fig. 6).

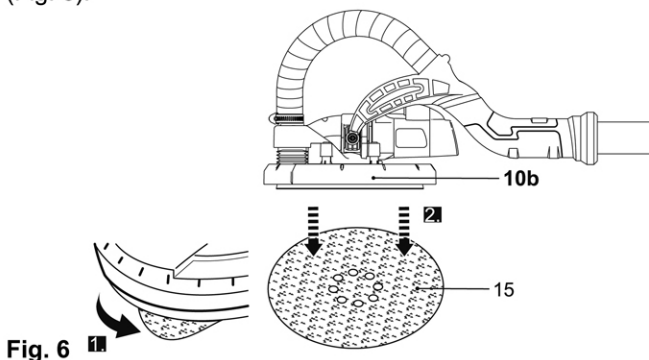


Fig. 6 1

2. Attach a new sanding paper as required.

## Dust extraction



**WARNING! Attach a dust extraction device when using this product in order to keep the working area clean!**



**Wear a dust mask when operating this product! Dust can be harmful to health!**

1. Insert the vacuum hose connector(**12b**) into dust extraction outlet(**8,11b**) all the way to stop directly(Fig. 7,step 1).
2. If it is hard to insert, please loosen the sleeve on the dust extraction outlet(**8,11b**)(Fig. 7,step 2).
3. Secure the connection by tightening the sleeve on the dust extraction outlet(**8,11b**)(Fig. 7,step 3)
4. Loosen the sleeve on the dust extraction outlet (**8, 11b**), hold the handles (**12a**) and pull the connector (**12b**) out of the outlet to remove the vacuum hose (**12**) from the product.



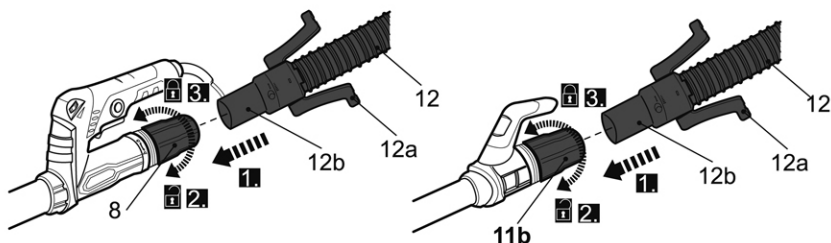


Fig. 7

5. Attach a dust extraction device e. g. a suitable vacuum cleaner to the vacuum adaptor (**12d/13**).

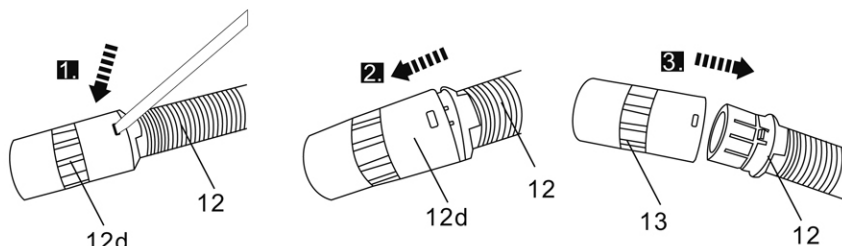


Fig. 8

6. To change the adaptor (**12d/13**), push the screw driver into the groove of vacuum adaptor all the way to stop (Fig. 8, step 1). In the meantime, remove the vacuum adaptor from vacuum hose (**12**) (Fig. 8, step 2).
7. Align the groove of vacuum adaptor (**13**) to the knob on the vacuum hose (**12**). Push the vacuum adaptor (**13**) into vacuum hose (**12**) all the way to stop (Fig. 8, step 3).

## Brush-type skirt

The machine head **(10)** is surrounded by a brush-type skirt **(10d)**. This has two benefits:

1. The brush-type skirt **(10d)** protrudes from the base plate **(10b)** and contacts the work surface first. This keeps the base plate **(10b)** parallel to the surface to be sanded before the sanding paper touches the work surface. In this way the brush-type skirt prevents crescent-shaped indentations being formed.
2. Furthermore, the brush-type skirt **(10d)** prevents excessive dust leakage. The dust generated during the sanding operation will not leak out owing to the brush bristles and it will be disposed of by the dust extraction system. Check the brush-type skirt **(10d)** before each use.

## Connection to power supply

1. Make sure the on/off switch **(9)** is in its off position.
2. Connect the plug with a suitable socket.



**WARNING! Check the voltage! The voltage must comply with the information on the rating label!**

3. Your product is now ready to be used.



## In more detail...

In more detail...

<b>Product functions</b>	25
<b>Operation</b>	29
<b>Care and maintenance</b>	32
<b>Trouble shooting</b>	34
<b>Recycling and disposal</b>	35
<b>Guarantee</b>	36
<b>EC declaration of conformity</b>	37

## Intended use

This product is intended for sanding large areas of drywalls and ceilings to prepare for painting or wallpapering by using the suitable sanding paper.

This product is not suitable for sanding small area like corners and edges. It is also not suitable for sanding off the wallpapers and not be used for wet sanding.

This product may not be used as cut-off tool, grinder, polisher or wire brush. It should not be used on other materials which are harmful to health.

For safety reasons it is essential to read the entire instruction manual before first operation and to observe all the instructions therein.

This product is intended for private domestic use only, not for any commercial trade use. It must not be used for any purposes other than those described.

## Speed dial



**WARNING!** Always switch the product off and disconnect it from power supply before making any adjustments!



Limit the maximum speed using the speed dial (6).

1. Turn the speed dial (6) left (as seen from below perspective) to increase the working speed (Fig. 9). A higher setting is suitable for sanding with fine-grained sanding papers to achieve a fine finish.

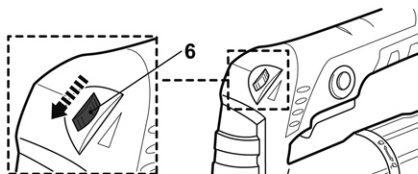


Fig. 9

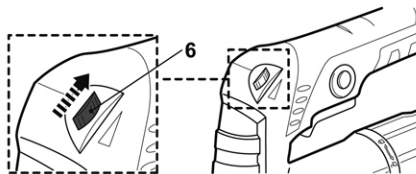


Fig. 10

2. Turn the speed dial **(6)** right (as seen from below perspective) to decrease the working speed (Fig.10). A lower setting is suitable for sanding with coarse-grained sanding papers to clean plaster and water stains from work surfaces.

## Adjusting suction power for dust collection

Adjusting suction power for dust collection according to the intended operation (Fig. 11).

1. Turn the adjustment ring **(12c)** clockwise (as seen from operator's position) to decrease the suction power.
2. Turn the adjustment ring **(12c)** anticlockwise (as seen from operator's position) to increase the suction power.

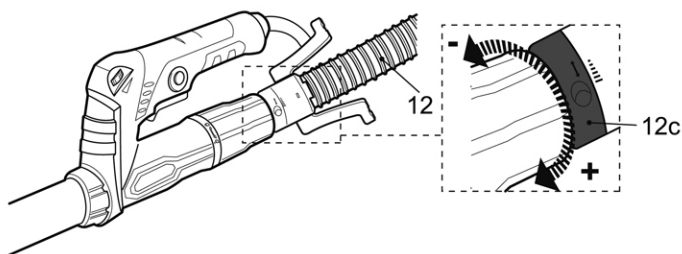


Fig. 11

## Adjusting suction power for ceiling

This product features a ceiling function for ceiling work and has an adjusting knob that easily adjusts the suction power you need. Adjust the suction power for ceiling according to the intended operation (Fig. 12).

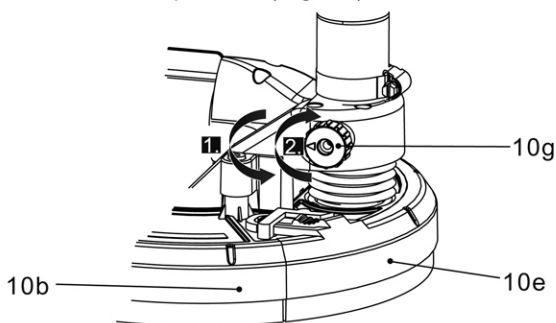


Fig.12

1. Turn the adjusting knob(10g) anticlockwise to decrease the suction power for ceiling when sanding the ceiling(Fig. 12,step 1).
2. Turn the adjusting knob(10g) clock wise to increase the suction power for ceiling when sanding the ceiling(Fig. 12,step 2).

## Switching on/off

Operate the product either in instant or continuous mode.

### Instant mode

1. Switch the product on by squeezing the on/off switch (9) (Fig. 13).
2. Switch the product off by releasing the on/off switch (9).

### Continuous mode

1. Switch the product on by squeezing the on/off switch (9) and hold it in position (Fig. 14, step 1).
2. Press the lock-on button (7) and hold it in position to lock the on/off switch (9) (Fig. 14, step 2).
3. Release the lock-on button (7) and on/off switch (9). The on/off switch is now locked on for continuous use.
4. Depress and release the on/off switch (9) to switch the product off.

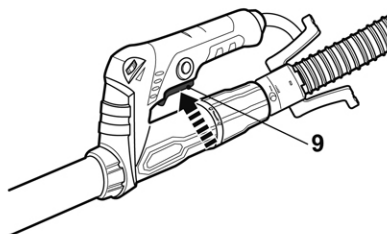


Fig.13

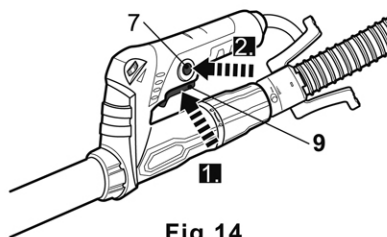


Fig.14

## Guard segment

The detachable guard segment allows the distance between the wall/ceiling and the side of the sanding paper/base plate to be reduced.

Remove the guard segment when the work surface is close to the other objects (eg wall, ceiling).



**WARNING!** Use the product without guard segment only for sanding operation on work surface close to other objects!

1. Press the unlock button(10f)downward, hold it in position and remove the segment (10e)from the guard (10b) (Fig.15 ).

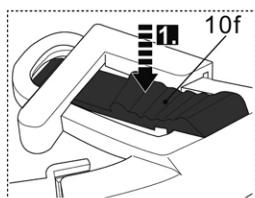
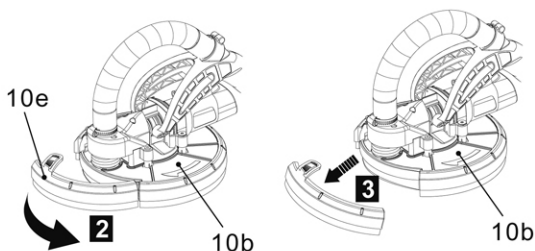


Fig.15



2. After operation, refit the segment(10e)onto the guard (10b). Ensure the unlock button( 10f ) is properly engaged in position (Fig.16 ).

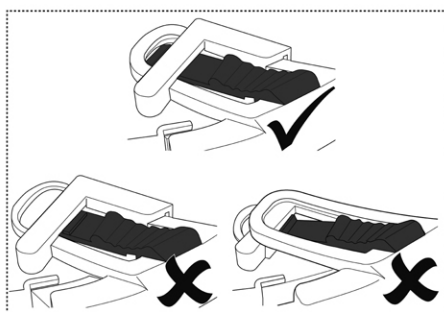
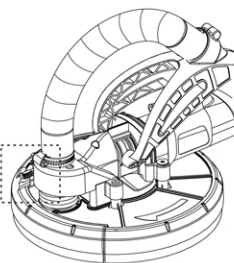


Fig.16



In more detail...

## General operation

1. Check the product, its power cord and plug as well as accessories for damage before each use. Do not use the product if it is damaged or shows wear.
2. Double check that the accessories and attachments are properly fixed.
3. Always hold the product by its handles/gripping surface. Keep the handles/gripping surface dry to ensure safe support.
4. Ensure that the air vents are always unobstructed and clear. Clean them if necessary with a soft brush. Blocked air vents may lead to overheating and damage the product.
5. Switch the product off immediately if you are disturbed while working by other people entering the working area. Always let the product come to complete stop before putting it down.
6. Do not overwork yourself. Take regular breaks to ensure you can concentrate on the work and have full control over the product.
7. Always be aware of kickback, ensure stable footing.

## Sanding



**WARNING! During operation fine dust will be generated!**



**Some dusts are highly inflammable and explosive! Do not smoke during operation, keep heat sources and open flames out of the working area!**



**Always use a dust extraction system and wear a dust mask to protect yourself against hazards resulting from fine dust!**



1. Ensure the work surface is free of obstacles like nails or screws before operation. Remove them if required.



2. Hold the product with one hand on the main handle **(5)** and with the other hand on gripping surface **(1)** (Fig.17 ).
3. Hold the product with one hand on the main handle **(5)** and with the other hand on the rear handle **(11a)** when the extension shaft **(11)** is assembled (Fig.18).



Fig.17, without extension shaft

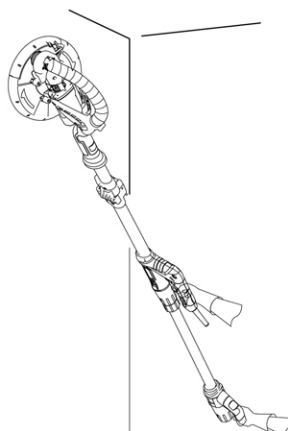


Fig.18, with extension shaft

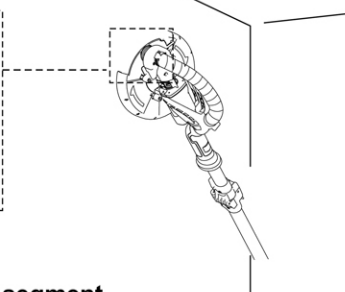
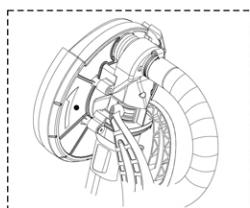
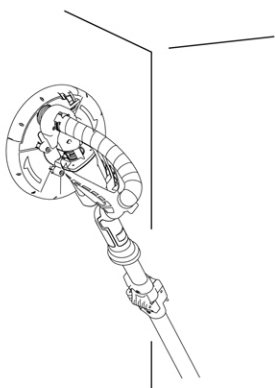
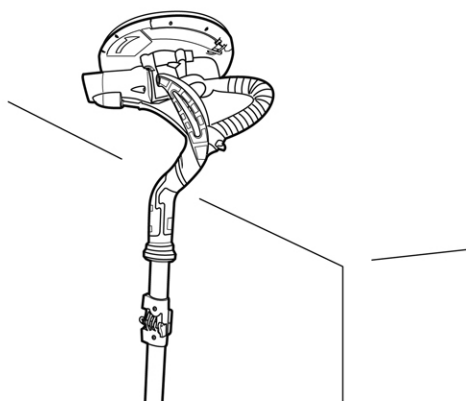


Fig.19, without guard segment

4. Remove the guard segment **(10e)** when the work surface is close to the other objects (e. g. wall, ceiling) (Fig. 19).
5. Switch the product on and wait until it runs at full speed before placing it on the work surface.
6. Keep the base plate as parallel to the work surface as possible and place the brush-type skirt first onto it.
7. Apply some pressure on the machine head, so that the sanding paper can contact the work surface (Fig. 20,21).

In more detail...

**Fig.20****Fig.21**

8. Move the product back and forth with slow even speed.
9. Only apply as much pressure as necessary to keep the product flat on the work surface. Higher pressure will not increase but lower the performance of the product and leads to uneven results.
10. Keep the product moving at all times, do not stop in one position to avoid grooves.
11. Lift the product from the work surface before switching it off.

## The golden rules for care



**WARNING!** Always switch the product off, disconnect the product from the power supply and let the product cool down before performing inspection, maintenance and cleaning work!



1. Keep the product clean. Remove debris from it after each use and before storage.
2. Regular and proper cleaning will help ensure safe use and prolong the life of the product.
3. Inspect the product before each use for worn and damaged parts. Do not operate it if you find broken and worn parts.



**WARNING!** Only perform repairs and maintenance work according to these instructions! All further works must be performed by a qualified specialist!

## General cleaning

1. Clean the product with a dry cloth. Use a brush for areas that are hard to reach.
2. In particular clean the air vents (**10a**) after every use with a cloth and brush.
3. Remove stubborn dirt with high pressure air (max. 3 bar).



**NOTE:** Do not use chemical, alkaline, abrasive or other aggressive detergents or disinfectants to clean this product as they might be harmful to its surfaces.

4. Check for worn or damaged parts. Replace worn parts as necessary or contact an authorised service centre for repair before using the product again.

## Maintenance

Before and after each use, check the product and accessories (or attachments) for wear and damage. If required, exchange them for new ones as described in this instruction manual. Observe the technical requirements.

In more detail...

## Power cord

If the supply cord is damaged, it must be replaced by the manufacturer, its service agent or similarly qualified persons in order to avoid a hazard.

## UK plug

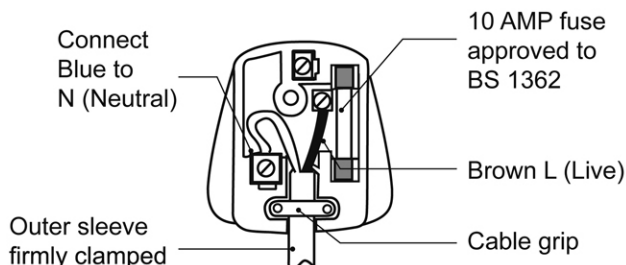
If you need to replace the fitted plug, then follow the instructions below.

**IMPORTANT:** The wires in the mains lead are coloured in accordance with the following code:

Blue – Neutral

Brown – Live

As the colours of the wire in the mains lead of this product may not correspond with the coloured marking identifying the terminals in your plug, proceed as follows. The wire, which is coloured blue, must be connected to the terminal, which is marked with N or coloured black. The wire, which is coloured brown, must be connected to the terminal, which is marked L or coloured red.



**WARNING!** Never connect live or neutral wires to the earth terminal of the plug, which is marked with E.

Only fit an approved BS 1363 or BS 1363/A plug and correctly rated BS 1362 13 Amp fuse. If in doubt, consult a qualified electrician.



**NOTE:** If a moulded plug is fitted and has to be removed take great care in disposing of the plug and severed cable, it must be destroyed to prevent engaging into a socket.

## Repair

This product does not contain any parts that can be repaired by the consumer. Contact an authorised service centre or a similarly qualified person to have it checked and repaired.

## Storage

1. Switch the product off and disconnect it from the power supply.
2. Clean the product as described above.
3. Store the product and its accessories in a dark, dry, frost-free, well-ventilated place.
4. Always store the product in a place that is inaccessible to children. The ideal storage temperature is between 10°C and 30°C.
5. We recommend using the original package for storage or covering the product with a suitable cloth or enclosure to protect it against dust.

## Transportation

1. Switch the product off and disconnect it from the power supply.
2. Attach transportation guards, if applicable.
3. Always carry the product by its gripping surface **(1)** and handles **(5, 11a)**.
4. Protect the product from any heavy impact or strong vibrations which may occur during transportation in vehicles.
5. Secure the product to prevent it from slipping or falling over.

## Trouble shooting

Suspected malfunctions are often due to causes that the users can fix themselves. Therefore check the product using this section. In most cases the problem can be solved quickly.



**WARNING!** Only perform the steps described within these instructions! All further inspection, maintenance and repair work must be performed by an authorised service centre or a similarly qualified specialist if you cannot solve the problem yourself!

Problem	Possible cause	Solution
1. Product does not start	1.1. Not connected to power supply 1.2. Power cord or plug is defective 1.3. Other electrical defect to the product	1.1. Connect to power supply 1.2. Check by a specialist electrician 1.3. Check by a specialist electrician
2. Product does not reach full power	2.1. Extension cord not suitable for operation with this product 2.2. Power source (e. g. generator) has too low voltage 2.3. Air vents are blocked	2.1. Use a proper extension cord 2.2. Connect to another power source 2.3. Clean the air vents
3. Unsatisfactory result	3.1. Sanding paper is worn 3.2. Sanding paper not suitable for work surface material	3.1. Replace with new one 3.2. Use proper sanding paper
4. Strong dust formation	4.1. Brush-type skirt worn out 4.2. Dust extraction system not connected/switch on	4.1. Have the brush-type skirt replaced 4.2. Connect to/switch on dust extraction system

## Recycling and disposal



Waste electrical products should not be disposed of with household waste. Please recycle where facilities exist.

Check with your Local Authority or local store for recycling advice.

## Guarantee

We take special care to select high quality materials and use manufacturing techniques that allow us to create products incorporating design and durability. This product (TITAN 710W Drywall Sander) has a manufacturer's guarantee of 2 years against manufacturing defects, from the date of purchase (if bought in store) or date of delivery (if bought online), at no additional cost for normal (non-professional or commercial) household use.

To make a claim under this guarantee, you must present your proof of purchase (such as a sales receipt, purchase invoice or other evidence admissible under applicable law), please keep your proof of purchase in a safe place. For this guarantee to apply, the product you purchased must be new, it will not apply to second hand or display products. Unless stated otherwise by applicable law, any replacement product issued under this guarantee will only be guaranteed until expiry of the original guarantee period.

This guarantee covers product failures and malfunctions provided the product was used for the purpose for which it is intended and subject to installation, cleaning, care and maintenance in accordance with the information contained in these terms and conditions, in the user manual and standard practice, provided that standard practice does not conflict with the user manual.

This guarantee does not cover defects and damage caused by normal wear and tear or damage that could be the result of improper use, faulty installation or assembly, neglect, accident, misuse, or modification of the product. Unless stated otherwise by applicable law, this guarantee will not cover, in any case, ancillary costs (shipping, movement, costs of uninstalling and reinstalling, labour etc), or direct and indirect damage.

This guarantee does not cover defects and damage caused by or resulting from:

Normal wear and tear

Overload, misuse or neglect

Repairs attempted by anyone other than an authorised agent

Cosmetic damage

Damage caused by foreign objects, substances or accidents

Accidental damage or modification

Failure to follow manufacturer's guidelines

Loss of use of the goods

If the product is defective, we will, within a reasonable time, repair or replace it.

Rights under this guarantee are enforceable in the country in which you purchased this product. Guarantee related queries should be addressed to the store you purchased this product from.

The guarantee is in addition to and does not affect your statutory rights.

In more detail...

## EC declaration of conformity



(EN) EU DECLARATION OF CONFORMITY  
 (FR) DÉCLARATION UE DE CONFORMITÉ  
 (PL) DEKLARACJA ZGODNOŚCI UE  
 (RO) DECLARAȚIA DE CONFORMITATE UE  
 (ES) DECLARACIÓN UE DE CONFORMIDAD  
 (PT) DECLARAÇÃO DE CONFORMIDADE UE

Product/ Produit/ Produkt/Produsul/Producto/Produto

- 710W Drywall Sander/Ponceuse girafe/Szlifierka do gipsu/ MAȘINĂ PENTRU ȘLEFUIT PEREȚI/Lijadora para yeso/Lixadora para gesso
- TTB625SDR
- Serial number: from 000001 to 999999

Name and address of the manufacturer or his authorised representative:

Nom et adresse du fabricant ou de son mandataire:

Nazwa i adres producenta lub jego upoważnionego przedstawiciela:

Denumirea și adresa producătorului sau a reprezentantului său autorizat:

Nombre y dirección del fabricante o de su representante autorizado:

Nome e endereço do fabricante ou do respetivo mandatário:

Kingfisher International Products B.V.,  
 Rapenburgerstraat 175E,  
 1011 VM Amsterdam,  
 The Netherlands

This declaration of conformity is issued under the sole responsibility of the manufacturer.

La présente déclaration de conformité est établie sous la seule responsabilité du fabricant.

Niniejsza deklaracja zgodności wydana zostaje na wyłączną odpowiedzialność producenta.

Prezenta declarație de conformitate este emisă pe răspunderea exclusivă a producătorului.

La presente declaración de conformidad se expide bajo la exclusiva responsabilidad del fabricante.

A presente declaração de conformidade é emitida sob a exclusiva responsabilidade do fabricante.

Object of the declaration/Objet de la déclaration/Przedmiot deklaracji/  
 Obiectul declarației/Objeto de la declaración/Objeto da declaração



Product/Produit/Produkt/ Produsul/ Producto/ Produto	Model/Modèle/Model/ Modelul/Modelo/ Modelo	EAN
710W Drywall Sander/ Ponceuse girafe/Szlifierka do gipsu/ MAȘINĂ PENTRU ȘLEFUIT PEREȚI/Lijadora para yeso/Lixadora para gesso	TTB625SDR	5059340217420
<p>The object of the declaration described above is in conformity with the relevant Union harmonisation legislation:</p> <p>L'objet de la déclaration décrit ci-dessus est conforme à la législation d'harmonisation de l'Union applicable:</p> <p>Wymieniony powyżej przedmiot niniejszej deklaracji jest zgodny z odpowiednimi wymaganiami unijnego prawodawstwa harmonizacyjnego:</p> <p>Obiectul declarației descris mai sus este în conformitate cu legislația relevantă de armonizare a Uniunii:</p> <p>El objeto de la declaración descrita anteriormente es conforme con la legislación de armonización pertinente de la Unión:</p> <p>O objeto da declaração acima descrito está em conformidade com a legislação de harmonização da União aplicável:</p>		
<p>2006/42/EC as amended Machinery Directive</p> <p>2014/30/EU as amended Directive Electromagnetic compatibility</p> <p>2011/65/EU as amended Directive Restriction of the use of certain hazardous substances in electrical and electronic equipment</p> <p>2006/42/CE telle que modifiée Directive sur les machines</p> <p>2014/30/UE telle que modifiée Directive Compatibilité électromagnétique</p> <p>2011/65/UE telle que modifiée Directive relative à la limitation de l'utilisation de certaines substances dangereuses dans les équipements électriques et électroniques</p> <p>2006/42/WE w zmienionej dyrektywie maszynowej</p> <p>2014/30/UE ze zmianami Dyrektywa Kompatybilność elektromagnetyczna</p> <p>2011/65/UE ze zmianami Dyrektywa Ograniczenie stosowania niektórych niebezpiecznych substancji w sprzęcie elektrycznym i elektronicznym</p> <p>2006/42/CE, astfel a fost modificată Directiva privind echipamentele</p> <p>2014/30/UE, astfel a fost modificată Directiva privind compatibilitatea electromagnetică</p> <p>2011/65/UE, astfel a fost modificată Directiva privind limitarea utilizării anumitor substanțe periculoase în echipamentele electrice și electronice</p> <p>Directiva sobre maquinaria modificada 2006/42/CE</p> <p>2014/30/UE modificada Directiva Compatibilidad electromagnética</p> <p>2011/65/UE modificada Directiva Restricción del uso de determinadas sustancias peligrosas en equipos eléctricos y electrónicos</p> <p>2006/42/CE como diretiva de máquinas alteradas</p> <p>2014/30/UE como alteração da compatibilidade eletromagnética</p> <p>2011/65/UE como restrição diretiva alterada da utilização de certas substâncias perigosas em equipamentos elétricos e eletrônicos</p>		

References to the relevant harmonised standards used or references to the other technical specifications in relation to which conformity is declared:

Références des normes harmonisées pertinentes appliquées, y compris la date de celles-ci, ou des autres caractéristiques techniques, y compris la date de celles-ci, par rapport auxquelles la conformité est déclarée:

Odwolania do odnośnych norm zharmonizowanych, które zastosowano, wraz z datą normy, lub do innych specyfikacji technicznych, wraz z

datą specyfikacji, w odniesieniu do których deklarowana jest zgodność:

Trimiteri la standardele armonizate relevante folosite, inclusiv data standardului, sau trimiteri la celelalte specificații tehnice, inclusiv data specificațiilor, în legătură cu care se declară conformitatea:

Referencias a las normas armonizadas pertinentes utilizadas, incluidas las fechas de las normas, o referencias a las otras especificaciones técnicas, incluidas las fechas de las especificaciones, respecto a las cuales se declara la conformidad:

Referências às normas harmonizadas aplicáveis utilizadas, incluindo a data da norma, ou às outras especificações técnicas, incluindo a data da especificação, em relação às quais é declarada a conformidade:

EN 60745-1:2009+A11:2010

EN 60745-2-3:2011+A2:2013+A11:2014+A12:2014+A13:2015

EN 55014-1:2017+A11:2020

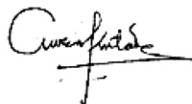
EN 55014-2:2015

EN IEC 61000-3-2:2019

EN 61000-3-3:2013+A1:2019

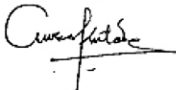
Signed for and on behalf of / Signé par et au nom de / Podpisano w imieniu / Semnat pentru și în numele / Firmado en nombre de / Assinado por e em nome de:

Kingfisher International Products B.V.,  
Rapenburgerstraat 175E,  
1011 VM Amsterdam,  
The Netherlands



David Awe  
Group Quality & Sustainability Director  
30/04/2021

## EC declaration of conformity

<b>UK CA</b> (UK) DECLARATION OF CONFORMITY		
Product		
•710W Drywall Sander •TTB625SDR •Serial number: from 000001 to 999999		
Name and address of the manufacturer or his authorised representative:		
Kingfisher International Products Limited 3 Sheldon Square London W2 6PX United Kingdom		
This declaration of conformity is issued under the sole responsibility of the manufacturer.		
Object of the declaration		
Product	Model	EAN
710W Drywall Sander	TTB625SDR	5059340217420
The object of the declaration described above is in conformity with the relevant legislation:		
Supply of Machinery (Safety) Regulations 2008 as amended Electromagnetic Compatibility Regulations 2016 as amended The Restriction of the use of Certain Hazardous Substances in Electrical and Electronic Equipment Regulations 2012 as amended		
References to the relevant designated standards used or references to the other technical specifications in relation to which conformity is declared:		
EN 60745-1:2009+A11:2010 EN 60745-2-3:2011+A2:2013+A11:2014+A12:2014+A13:2015 EN 55014-1:2017+A11:2020 EN 55014-2:2015 EN IEC 61000-3-2:2019 EN 61000-3-3:2013+A1:2019		
Signed for and on behalf of: Kingfisher International Products Limited 3 Sheldon Square London W2 6PX United Kingdom 		
David Awe Group Quality & Sustainability Director		On 30/04/2021

In more detail...

# TITAN

**Manufacturer, Fabricant, Producent,  
Producător, Fabricante:**

UK Manufacturer:  
Kingfisher International Products Limited  
3 Sheldon Square  
London  
W2 6PX  
United Kingdom

EU Manufacturer:  
Kingfisher International Products B.V.  
Rapenburgerstraat 175E  
1011 VM Amsterdam  
The Netherlands



[www.diy.com](http://www.diy.com)

[www.screwfix.com](http://www.screwfix.com)  
[www.screwfix.ie](http://www.screwfix.ie)

To view instruction manuals online,  
visit [www.kingfisher.com/products](http://www.kingfisher.com/products)

---