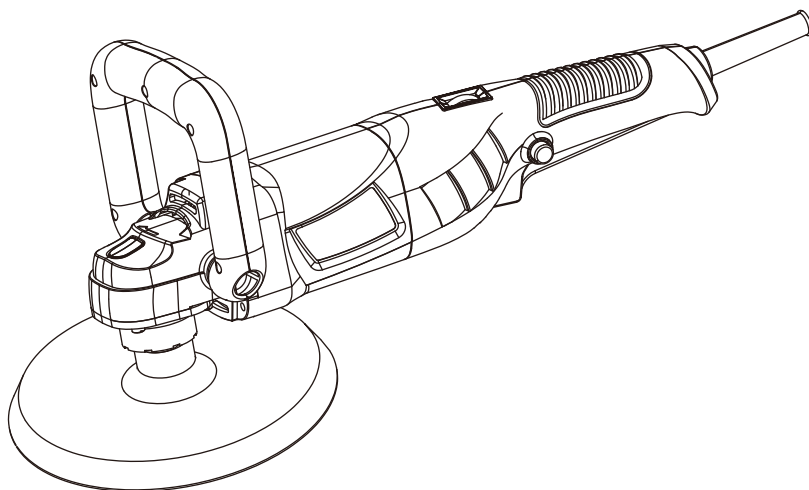


TITAN

1100W Polisher



TTB808PSH

EAN:5059340215884

WARNING: Read the instructions before using the product!



BX220IM

Let's get started...

These instructions are for your safety. Please read through them thoroughly before use and retain them for future reference.



Getting started...	02
Safety information	03
Your product	13
Before you start	15



In more detail...	20
Product functions	21
Operation	23
Care and maintenance	25
Trouble shooting	28
Recycling and disposal	28
Guarantee	29
Declaration of conformity	30

Safety warnings

General power tool safety warnings



WARNING! Read all safety warnings and all instructions. Failure to follow the warnings and instructions may result in electric shock, fire and/or serious injury. **Save all warnings and instructions for future reference.** The term “power tool” in the warnings refers to your mains-operated (corded) power tool or battery-operated (cordless) power tool.

Work area safety

- > **Keep work area clean and well lit.** Cluttered or dark areas invite accidents.
- > **Do not operate power tools in explosive atmospheres, such as in the presence of flammable liquids, gases or dust.** Power tools create sparks which may ignite the dust or fumes.
- > **Keep children and bystanders away while operating a power tool.** Distractions can cause you to lose control.

Electrical safety

- > **Power tool plugs must match the outlet. Never modify the plug in any way. Do not use any adapter plugs with earthed (grounded) power tools.** Unmodified plugs and matching outlets will reduce risk of electric shock.
- > **Avoid body contact with earthed or grounded surfaces, such as pipes, radiators, ranges and refrigerators.** There is an increased risk of electric shock if your body is earthed or grounded.
- > **Do not expose power tools to rain or wet conditions.** Water entering a power tool will increase the risk of electric shock.

Safety warnings

- > **Do not abuse the cord. Never use the cord for carrying, pulling or unplugging the power tool. Keep cord away from heat, oil, sharp edges or moving parts.** Damaged or entangled cords increase the risk of electric shock.
- > **When operating a power tool outdoors, use an extension cord suitable for outdoor use.** Use of a cord suitable for outdoor use reduces the risk of electric shock.
- > **If operating a power tool in a damp location is unavoidable, use a residual current device (RCD) protected supply.** Use of an RCD reduces the risk of electric shock.

Personal safety

- > **Stay alert, watch what you are doing and use common sense when operating a power tool. Do not use a power tool while you are tired or under the influence of drugs, alcohol or medication.** A moment of inattention while operating power tools may result in serious personal injury.
- > **Use personal protective equipment. Always wear eye protection.** Protective equipment such as dust mask, non-skid safety shoes, hard hat, or hearing protection used for appropriate conditions will reduce personal injuries.
- > **Prevent unintentional starting. Ensure the switch is in the off-position before connecting to power source and/or battery pack, picking up or carrying the tool.** Carrying power tools with your finger on the switch or energising power tools that have the switch on invites accidents.

- > **Remove any adjusting key or wrench before turning the power tool on.** A wrench or a key left attached to a rotating part of the power tool may result in personal injury.
- > **Do not overreach. Keep proper footing and balance at all times.** This enables better control of the power tool in unexpected situations.
- > **Dress properly. Do not wear loose clothing or jewellery. Keep your hair, clothing and gloves away from moving parts.** Loose clothes, jewellery or long hair can be caught in moving parts.
- > **If devices are provided for the connection of dust extraction and collection facilities, ensure these are connected and properly used.** Use of dust collection can reduce dust-related hazards.

Power tool use and care

- > **Do not force the power tool. Use the correct power tool for your application.** The correct power tool will do the job better and safer at the rate for which it was designed.
- > **Do not use the power tool if the switch does not turn it on and off.** Any power tool that cannot be controlled with the switch is dangerous and must be repaired.
- > **Disconnect the plug from the power source and/or the battery pack from the power tool before making any adjustments, changing accessories, or storing power tools.** Such preventive safety measures reduce the risk of starting the power tool accidentally.
- > **Store idle power tools out of the reach of children and do not allow persons unfamiliar with the power tool or these instructions to operate the power tool.** Power tools are dangerous in the hands of untrained users.

Safety warnings

- > **Maintain power tools. Check for misalignment or binding of moving parts, breakage of parts and any other condition that may affect the power tool's operation. If damaged, have the power tool repaired before use.** Many accidents are caused by poorly maintained power tools.
- > **Keep cutting tools sharp and clean.** Properly maintained cutting tools with sharp cutting edges are less likely to bind and are easier to control.
- > **Use the power tool, accessories and tool bits etc. in accordance with these instructions, taking into account the working conditions and the work to be performed.** Use of the power tool for operations different from those intended could result in a hazardous situation.

Service

- > **Have your power tools serviced by a qualified repair person using only identical replacement parts.** This will ensure that safety of the power tool is maintained.

Angle polisher safety warnings - Safety warnings common for polishing

- > **This power tool is intended to function as a polisher. Read all safety warnings, instructions, illustrations and specifications provided with this power tool.** Failure to follow all instructions listed below may result in electric shock, fire and/or serious injury.
- > **Operations such as grinding, sanding, wire brushing or cutting-off are not recommended to be performed with this power tool.** Operations for which the power tool was not designed may create a hazard and cause personal injury.

- > **Do not use accessories which are not specifically designed and recommended by the tool manufacturer.** Just because the accessory can be attached to your power tool, it does not assure safe operation.
- > **The rated speed of the accessory must be at least equal to the maximum speed marked on the power tool.** Accessories running faster than their rated speed can break and fly apart.
- > **The outside diameter and the thickness of your accessory must be within the capacity rating of your power tool.** Incorrectly sized accessories cannot be adequately guarded or controlled.
- > **Threaded mounting of accessories must match the grinder spindle thread. For accessories mounted by flanges, the arbour hole of the accessory must fit the locating diameter of the flange.** Accessories that do not match the mounting hardware of the power tool will run out of balance, vibrate excessively and may cause loss of control.
- > **Do not use a damaged accessory. Before each use inspect the accessory such as backing pad for cracks, tear or excess wear. If power tool or accessory is dropped, inspect for damage or install an undamaged accessory. After inspecting and installing an accessory, position yourself and bystanders away from the plane of the rotating accessory and run the power tool at maximum no-load speed for one minute.** Damaged accessories will normally break apart during this test time.

Safety warnings

- > **Wear personal protective equipment. Depending on application, use face shield, safety goggles or safety glasses. As appropriate, wear dust mask, hearing protectors, gloves and workshop apron capable of stopping small abrasive or workpiece fragments.** The eye protection must be capable of stopping flying debris generated by various operations. The dust mask or respirator must be capable of filtering particles generated by your operation. Prolonged exposure to high intensity noise may cause hearing loss.
- > **Keep bystanders a safe distance away from work area. Anyone entering the work area must wear personal protective equipment.** Fragments of workpiece or of a broken accessory may fly away and cause injury beyond immediate area of operation.
- > **Position the cord clear of the spinning accessory.** If you lose control, the cord may be cut or snagged and your hand or arm may be pulled into the spinning accessory.
- > **Never lay the power tool down until the accessory has come to a complete stop.** The spinning accessory may grab the surface and pull the power tool out of your control.
- > **Do not run the power tool while carrying it at your side.** Accidental contact with the spinning accessory could snag your clothing, pulling the accessory into your body.
- > **Regularly clean the power tool's air vents.** The motor's fan will draw the dust inside the housing and excessive accumulation of powdered metal may cause electrical hazards.
- > **Do not operate the power tool near flammable materials.** Sparks could ignite these materials.

- > **Do not use accessories that require liquid coolants.** Using water or other liquid coolants may result in electrocution or shock.

Further safety instructions for all operations – Kickback and related warnings

Kickback is a sudden reaction to a pinched or snagged rotating wheel, backing pad, brush or any other accessory. Pinching or snagging causes rapid stalling of the rotating accessory which in turn causes the uncontrolled power tool to be forced in the direction opposite of the accessory's rotation at the point of the binding.

Kickback is the result of power tool misuse and/or incorrect operating procedures or conditions and can be avoided by taking proper precautions as given below.

- > **Maintain a firm grip on the power tool and position your body and arm to allow you to resist kickback forces. Always use auxiliary handle, if provided, for maximum control over kickback or torque reaction during start-up.** The operator can control torque reactions or kickback forces, if proper precautions are taken.
- > **Never place your hand near the rotating accessory.** Accessory may kickback over your hand.
- > **Do not position your body in the area where power tool will move if kickback occurs.** Kickback will propel the tool in direction opposite to the wheel's movement at the point of snagging.
- > **Use special care when working corners, sharp edges etc. Avoid bouncing and snagging the accessory.** Corners, sharp edges or bouncing have a tendency to snag the rotating accessory and cause loss of control or kickback.
- > **Do not attach a saw chain woodcarving blade or toothed saw blade.** Such blades create frequent kickback and loss of control.

Safety warnings specific for polishing operations

- >**Do not allow any loose portion of the polishing bonnet or its attachment strings to spin freely. Tuck away or trim any loose attachment strings.** Loose and spinning attachment strings can entangle your fingers or snag on the workpiece.
- >**Do not wear loose or draping clothing or jewelry when using this tool. They may become snagged on the polishing pad.** Ideally wear close fitting clothing or overalls, tuck all jewelry inside clothing and tie up any long hair securely.
- >**Always apply even, central pressure to the head of the polisher.** Applying pressure to the side of the polishing pad will cause the polisher to wander across the polishing surface.
- >**Always use a firm grip on the polisher when in use, using 2 hands at all times.** Be prepared for unexpected polishing pad movement if pressure is applied on edge of polishing pad.

Vibration and noise reduction

To reduce the impact of noise and vibration emission, limit the time of operation, use low-vibration and low-noise operating modes as well as wear personal protective equipment.

Take the following points into account to minimise the vibration and noise exposure risks:

- >Only use the product as intended by its design and these instructions.
- >Ensure that the product is in good condition and well maintained.
- >Use correct attachments for the product and ensure they are in good condition.
- >Keep tight grip on the handles/grip surface.

- > Maintain this product in accordance with these instructions and keep it well lubricated (where appropriate).
- > Plan your work schedule to spread any high vibration tool use across a longer period of time.

Emergency

Familiarise yourself with the use of this product by means of this instruction manual. Memorise the safety directions and follow them to the letter. This will help to prevent risks and hazards.

- > **Always be alert when using this product, so that you can recognise and handle risks early.** Fast intervention can prevent serious injury and damage to property.
- > **Switch off and disconnect from the power supply if there are malfunctions.** Have the product checked by a qualified professional and repaired, if necessary, before you operate it again.

Residual risks

Even if you are operating this product in accordance with all the safety requirements, potential risks of injury and damage remain. The following dangers can arise in connection with the structure and design of this product:

- > Health defects resulting from vibration emission if the product is being used over long periods of time or not adequately managed and properly maintained.
- > Danger of injury and property damage caused by flying objects.



WARNING! This product produces an electromagnetic field during operation! This field may under some circumstances interfere with active or passive medical implants! To reduce the risk of serious or fatal injury, we recommend persons with medical implants to consult their doctor and the medical implant manufacturer before operating this product!

Symbols

On the product, the rating label and within these instructions you will find among others the following symbols and abbreviations. Familiarize yourself with them to reduce hazards like personal injuries and damage to property.

V~	Volt, (alternating voltage)	mm	Millimetre
Hz	Hertz	kg	Kilogram
W	Watt	dB(A)	Decibel (A-rated)
/min or min ⁻¹	Per minute	m/s ²	Metres per seconds squared



Lock / to tighten or secure.



Unlock / to loosen.



Note / Remark.



Caution / Warning.



Read the instruction manual.



Wear hearing protection.



Wear eye protection.



Wear a dust mask.



Wear protective gloves.



Wear protective, slip-resistant footwear.

yyWxx

Manufacturing date code; year of manufacturing (20yy) and week of manufacturing (Wxx)



Switch the product off and disconnect it from the power supply before assembly, cleaning, adjustments, maintenance, storage and transportation.



This product is of protection class II. That means it is equipped with enhanced or double insulation.



UK Conformity Assessed

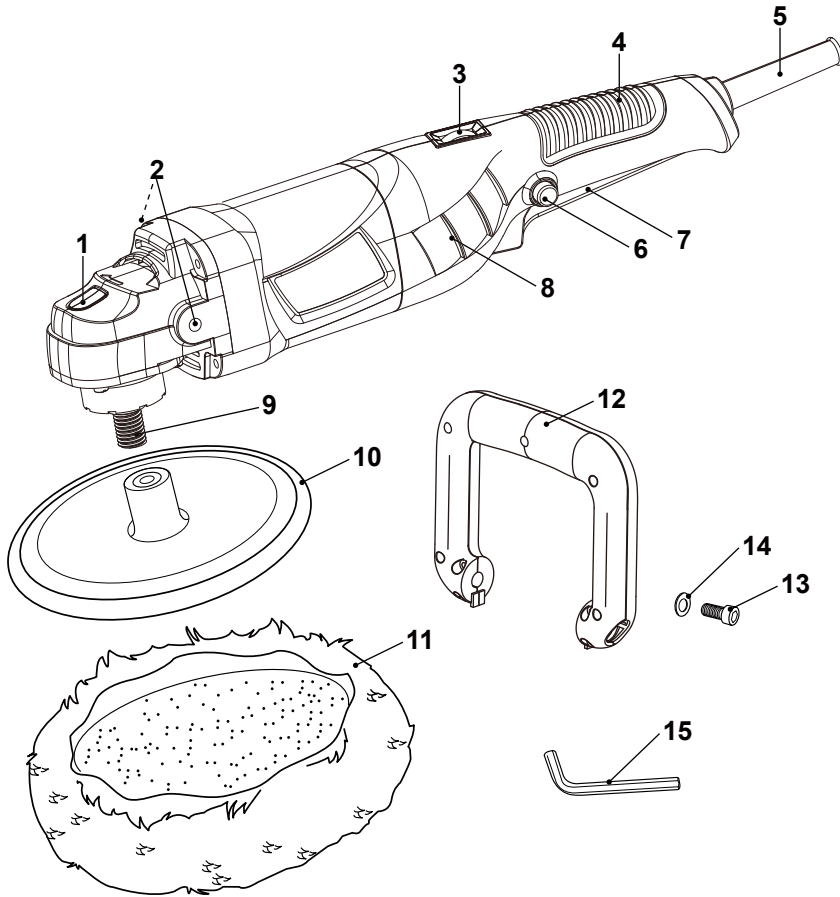


The product complies with the applicable European directives and an evaluation method of conformity for these directives was done.



WEEE symbol. Waste electrical products should not be disposed of with household waste. Please recycle where facilities exist. Check with your Local Authority or local store for recycling advice.

Your product




- 1. Spindle lock button
- 2. Mounting thread (x2)
- 3. Speed dial
- 4. Handle
- 5. Power cord with plug
- 6. Lock-on button
- 7. On/off switch
- 8. Air vents

- 9. Spindle
- 10. Backing disc
- 11. Polishing bonnet
- 12. Auxiliary handle
- 13. Hex bolt (x2)
- 14. Washer (x2)
- 15. Hex key

Getting started...

Technical specifications

General

- > **Rated voltage, frequency** : 220 – 240 V~ , 50 Hz
- > **Rated power input** : 1100 W
- > **Rated speed n** : 600-3000 min⁻¹
- > **Wheel diameter / rated capacity** : Ø 180mm
- > **Spindle thread size** : M 14
- > **Protection class** : II 
- > **Weight** : approx. 2.4 kg

Sound values

- > **Sound pressure level L_{pA}** : 71 dB (A)
- > **Sound power level L_{WA}** : 82 dB (A)
- > **Uncertainty K_{pA} , K_{WA}** : 3 dB (A)

Hand arm vibration values

- > **Hand arm vibration at polishing a_{h,P}** : 3.36m/s²
- > **Uncertainty K** : 1.5 m/s²

The sound values have been determined according to noise test code given in EN 60745-1, using the basic standards EN ISO 3744 and EN ISO 11203.

The sound intensity level for the operator may exceed 80 dB(A) and ear protection measures are necessary.

The declared vibration value has been measured in accordance with a standard test method (according to EN 60745-2-3) and may be used for comparing one product with another. The declared vibration value may also be used in a preliminary assessment of exposure.



WARNING! Depending on the actual use of the product the vibration values can differ from the declared total. Adopt proper measures to protect yourself against vibration exposures. Take the whole work process including times the product is running under no load or switched off into consideration.

Proper measures include among others regular maintenance and care of the product and accessories, keeping hands warm, periodical breaks and proper planning of work processes.

RATING LABEL EXPLANATION

TTB808PSH = Model Number

TT = TITAN

B = 230-240V~

808 = Sequential Code

PSH = Polisher

Unpacking

- > Unpack all parts and lay them on a flat, stable surface.
- > Remove all packing materials and shipping devices, if applicable.
- > Make sure the delivery contents are complete and free of any damage. If you find that parts are missing or show damage do not use the product but contact your dealer. Using an incomplete or damaged product represents a hazard to people and property.
- > Ensure that you have all the accessories and tools needed for assembly and operation. This also includes suitable personal protective equipment.



WARNING! The product and the packaging are not children's toys! Children must not play with plastic bags, sheets and small parts! There is a danger of choking and suffocation!

You will need

(items not supplied)

suitable personal protective equipment
polish

(items supplied)

polishing bonnet (11)
hex bolt (x2)(14)
washer (x2) (14)
hex key (15)
auxiliary handle (12)
backing disc (10)

Setup



WARNING! The product must be fully assembled before operation! Do not use a product that is only partly assembled or assembled with damaged parts!

Follow the assembly instructions step-by-step and use the pictures provided as a visual guide to easily assemble the product!

Do not connect the product to power supply before it is completely assembled!

Auxiliary handle

Always attach the auxiliary handle (12). It improves the control when using the product.

- > Fit the auxiliary handle (12) onto the product, so that the holes on the auxiliary handle (12) are aligned with both mounting threads (2).
- > Use the hex key (15) to secure the auxiliary handle (12) with the hex bolts (13) and washers (14) on both sides (Fig. 1).

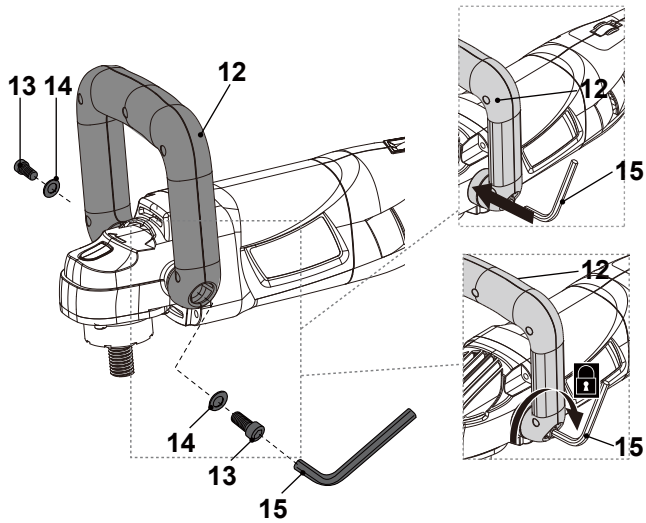


Fig. 1

Backing disc

Inspection of wheels

Prior to mounting, the disc should be inspected for damage and cracks. A disc which shows any evidence of cracks, abusive handling or abusive storage should never be mounted. Do not use a deformed or damaged backing disc.

Attaching

- > Screw the backing disc (10) onto the spindle (9) (Fig. 2).
- > Press the spindle lock button (1) and tighten the backing disc (10) onto the spindle (9) (Fig. 2). While turning, the spindle (9) will lock in place to tighten the backing disc (10).

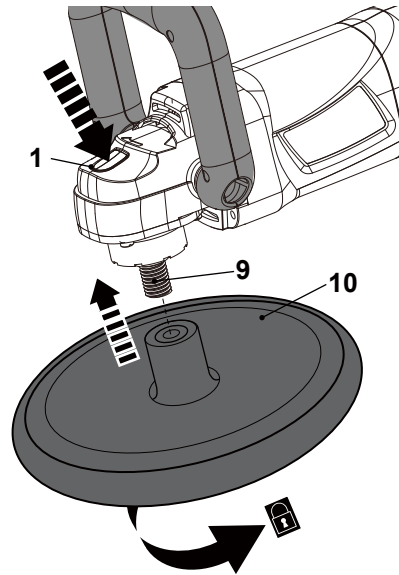


Fig. 2



WARNING! Ensure the disc is properly fastened, but do not use force to tighten the backing disc! High force will cause damage to the backing disc!

Backing disc

Removing / replacing

Replace a worn or damaged backing disc (10).

- > Press the spindle lock button (1) and turn the backing disc (10) until the spindle (9) locks in place.
- > Keep the spindle lock button (1) pressed and unscrew the backing disc (10) (Fig. 3).
- > Attach a new or another backing disc (10) as described above.

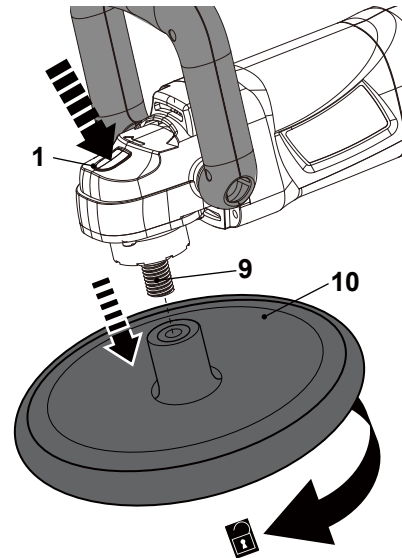


Fig. 3

Polishing bonnet

The hook & loop system facilitates attaching and replacing of polishing bonnet. The hook side is located on the backing disc (10) while the loop side is on the polishing bonnet (11).

Attaching

- > Always remove any dirt or foreign object from the polishing bonnet (11) as well as from the backing disc (10) before attaching.
- > Fold down the outer rim polishing bonnet (11) (Fig. 4).

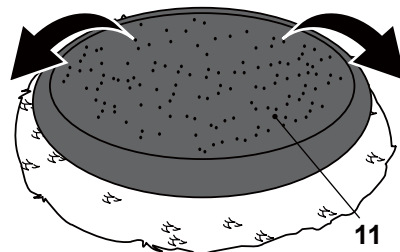


Fig. 4

- > Place the polishing bonnet (11) onto the backing disc (10) concentrically (Fig. 5).

- > Press the polishing bonnet (11) gently against the backing disc (10) to engage the hooks and loops in order to ensure a secure bond.
- > Fold up the outer rim polishing bonnet (11) around the the backing disc (10). Make sure the entire backing disc (10) is wrapped in the outer rim of the polishing bonnet (11) (Fig. 6).

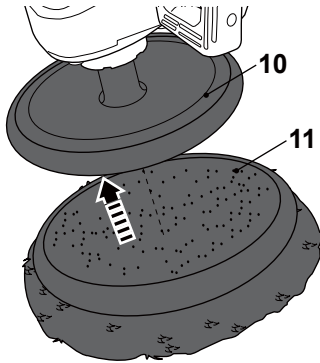


Fig. 5

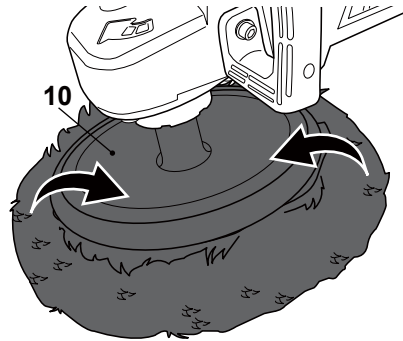


Fig. 6

Removing / replacing

Replace the polishing bonnet when it is dirty, worn or damaged.

- > Grip the rim of the polishing bonnet (11) and carefully remove it from the backing disc (10) (Fig. 7).
- > Attach a new polishing bonnet (11) as required.

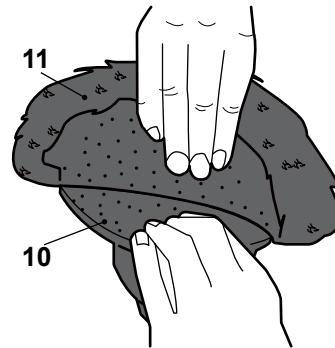


Fig. 7

Connection to power supply

- > Make sure the on/off switch (7) is in its off position.
- > Connect the plug with a suitable socket.



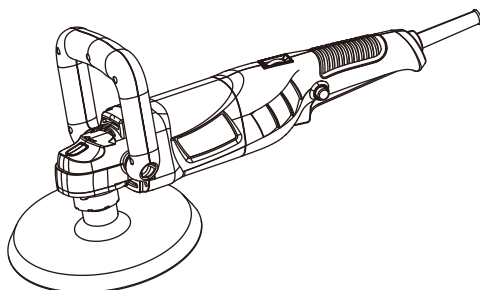
WARNING! Check the voltage! The voltage must comply with the information on the rating label!

- > Your product is now ready to be used.

In more detail...



Product functions	21
Operation	23
Care and maintenance	25
Trouble shooting	28
Recycling and disposal	28
Guarantee	29
EC declaration of conformity	30



Intended use

This product is designed for fine and high gloss polishing of metal surfaces under application of finishing polish. It is not intended for sanding and waxing with the supplied polishing bonnet. It may also not be used for grinding, cut-off grinding or wire brushing. The product may be used for dry operation only without water or other cooling liquids.

It may not be used for working on materials that are dangerous to health.

For safety reasons it is essential to read the entire instruction manual before first operation and to observe all the instructions therein.

Speed dial

Limit the maximum rotational speed by using the speed dial (3). The speed is adjustable to the following levels.

MIN - 1 - 2 - 3 - 4 - 5 - MAX

- > Turn the speed dial (3) forward (as seen from the operators position) to increase the maximum rotational speed (Fig. 8). Use high rotational speed to perform high gloss polishing. Exercise caution when use the product at a high rotational speed, for too much heat may be generated which could do irreparable harm to the polished surface.
- > Turn the speed dial (3) backward (as seen from the operators position) to decrease the maximum rotational speed (Fig. 9). The beginners have more success in reaching a desired effect at a low rotational speed. It also helps spread the polish evenly over the working surface without splattering all around.

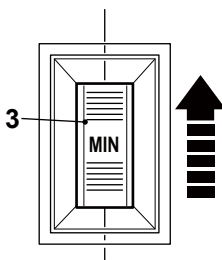


Fig. 8

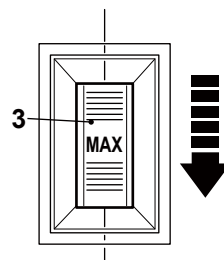


Fig. 9

In more detail...

Switching on/off

Operate the product either in instant or continuous mode.

Instant mode

- > Switch the product on by pressing the on/off switch (7) (Fig. 10).
- > Switch the product off by releasing the on/off switch (7) (Fig. 10).

Continuous mode

- > Switch the product on by pressing the on/off switch (7) and hold it in position (Fig. 10).
- > Press the lock-on button (6) to lock the on/off switch (7) (Fig. 10).> Release both switches. The on/off switch (7) is now locked-on for continuous use.
- > Depress and release the on/off switch (7) to switch the product off.

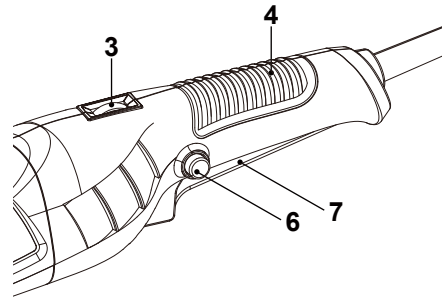


Fig. 10

General operation

- > Check the product, its power cord and plug as well as accessories for damage before each use. Do not use the product if it is damaged or shows wear.
- > Double check that the accessories and attachments are properly fixed.
- > Always hold the product on its handles. Keep the handles dry to ensure safe support.
- > Ensure that the air vents are always unobstructed and clear. Clean them if necessary with a soft brush. Blocked air vents may lead to overheating and damage the product.
- > Switch the product off immediately if you are disturbed while working by other people entering the working area. Always let the product come to complete stop before putting it down.
- > Do not overwork yourself. Take regular breaks to ensure you can concentrate on the work and have full control over the product.

Polishing

General polishing



NOTE: Polishing is only one step of painted surface care cycle. If necessary, use abrasive compounds with foam pad (not supplied) to remove the scratches or blemishes before polishing and wax the surface with special bonnet (not supplied) to seal the paint after polishing.



WARNING! Polishing is skilled work which requires basic knowledge and experience. Incorrect use of the product may cause irreparable damage to the polished surface. Test polish on a sample surface first or have it done by an experienced specialist.

- > Before polishing, wash and dry the area to be polished.
- > The working surface must be well lit, because some paint imperfection may only be seen with proper lighting.
- > Make sure that the polishing bonnet (11) is clean and free of foreign objects like dirt or sand, which could cause damage like scratches and swirls to the working surface.
- > Apply a small amount of polish to the working surface at first. Excessive polish cannot be absorbed by the polishing bonnet (11), which may stick to the working surface and lead to poor working results.
- > Hold the product firmly with one hand on the main handle (4) and with the other hand on the auxiliary handle (12) (Fig. 11).
- > Set the product at low rotational speed first so that the polish could be spread evenly over the working surface.
- > Switch the product on and wait until it runs at full speed before placing it on the working surface.
- > Do not add too much pressure on the auxiliary handle (12); let the product do the work. Excessive pressure will result in poor performance and damage of the working surface.

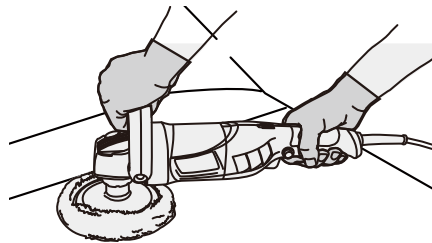


Fig. 11

In more detail...

Polishing

- > Keep the bonnet flat on the working surface and move it with even speed in a small orbital motion to build a crisscross pattern. Try to overlap each previous pass (Fig. 14).

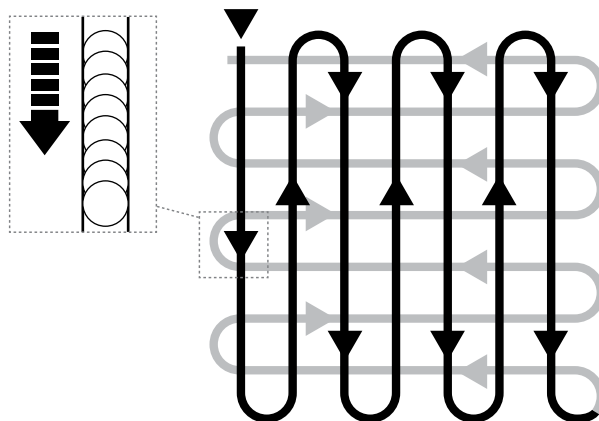


Fig. 14

- > Lift the product from the working surface before switching it off.
- > Wipe the residual polish off the surface by hand with a soft cloth.

Working hints

- > If you have insufficient knowledge about polishing, either test polish on a sample surface in advance or let an experienced specialist do the work.
- > The supplied polishing bonnet (11) is only suitable to use for fine polish as well as high-gloss polishing. To apply wax or abrasive compounds, you need to purchase additional polishing pads or bonnets. For more information and support, please contact the dealer from whom you purchased the product.
- > Always keep the product moving to avoid applying too much heat in one spot. Otherwise the surface will be irreparably damaged.
- > Exercise caution and avoid long-time polishing around edges, corners or small surface areas,
- > If the polishing bonnet tends to come off the backing disc (10), replace it with a new one.

After use

- > Switch the product off, disconnect it from the power supply and let it cool down.
- > Check, clean and store the product as described below.

The golden rules for care



WARNING! Always switch the product off, disconnect the product from the power supply and let the product cool down before performing inspection, maintenance and cleaning work!



- > Keep the product clean. Remove debris from it after each use and before storage.
- > Regular and proper cleaning will help ensure safe use and prolong the life of the product.
- > Inspect the product before each use for worn and damaged parts. Do not operate it if you find broken and worn parts.



WARNING! Only perform repairs and maintenance work according to these instructions! All further works must be performed by a qualified specialist!

General cleaning

- > Clean the product with a dry cloth. Use a brush for areas that are hard to reach.
- > In particular clean the air vents (8) after every use with a cloth and brush.
- > Remove stubborn dirt with high pressure air (max. 3 bar).



NOTE: Do not use chemical, alkaline, abrasive or other aggressive detergents or disinfectants to clean this product as they might be harmful to its surfaces.

- > Check for worn or damaged parts. Replace worn parts as necessary or contact an authorised service centre for repair before using the product again.

Polishing bonnet

- > Remove the polishing bonnet (11) as described above.
- > Wash the polishing bonnet (11) in warm water (max. 30°C) by hand, apply some soap if necessary. Then rinse the polishing bonnet thoroughly with clear water.
- > Let the polishing bonnet dry completely before use or storage.
- > It is recommended to lightly brush the surface of the polishing bonnet after washing and drying.

Maintenance

Before and after each use, check the product and accessories (or attachments) for wear and damage. If required, exchange them for new ones as described in this instruction manual. Observe the technical requirements.

Power cord

If the power cord is damaged, it must be replaced by the manufacturer, its service agent or similarly qualified persons in order to avoid a safety hazard.

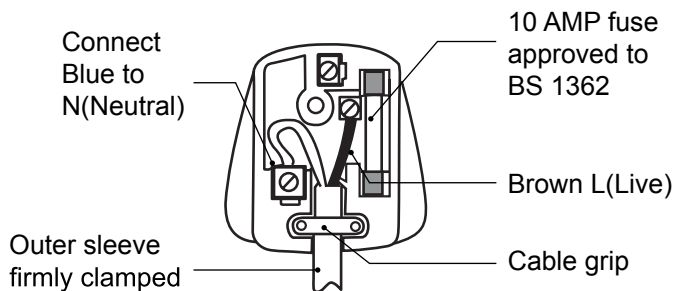
UK plug (only for UK market)

If you need to replace the fitted plug, then follow the instructions below.

IMPORTANT: The wires in the mains lead are coloured in accordance with the following code:

Blue – Neutral Brown – Live

As the colours of the wire in the mains lead of this product may not correspond with the coloured marking identifying the terminals in your plug, proceed as follows. The wire, which is coloured blue, must be connected to the terminal, which is marked with N or coloured black. The wire, which is coloured brown, must be connected to the terminal, which is marked L or coloured red.



WARNING! Never connect live or neutral wires to the earth terminal of the plug, which is marked with E.

Only fit an approved 13 Amp BS 1363 or BS 1363/A plug and the correctly rated fuse. If in doubt, consult a qualified electrician.



NOTE: If a moulded plug is fitted and has to be removed take great care in disposing of the plug and severed cable, it must be destroyed to prevent engaging into a socket.

Repair

This product does not contain any parts that can be repaired by the consumer. Contact an authorised service centre or a similarly qualified person to have it checked and repaired.

Storage

- > Switch the product off and disconnect it from the power supply.
- > Clean the product as described above.
- > Store the product and its accessories in a dark, dry, frost-free, well-ventilated place.
- > Always store the product in a place that is inaccessible to children. The ideal storage temperature is between 10°C and 30°C.
- > We recommend using the original package for storage or covering the product with a suitable cloth or enclosure to protect it against dust.

Transportation

- > Switch the product off and disconnect it from the power supply.
- > Attach transportation guards, if applicable.
- > Always carry the product by its main handle (4).
- > Protect the product from any heavy impact or strong vibrations which may occur during transportation in vehicles.
- > Secure the product to prevent it from slipping or falling over.

Troubleshooting

Suspected malfunctions are often due to causes that the users can fix themselves. Therefore check the product using this section. In most cases the problem can be solved quickly.



WARNING! Only perform the steps described within these instructions! All further inspection, maintenance and repair work must be performed by an authorised service centre or a similarly qualified specialist if you cannot solve the problem yourself!

Problem	Possible Cause	Solution
1. Product does not start	1.1 Not connected to power supply 1.2 Power cord or plug is defective 1.3 Other electrical defect to the product	1.1 Connect to power supply 1.2 Check by a specialist electrician 1.3 Check by a specialist electrician
2. Product does not reach full power	2.1 Extension cord not suitable for operation with this product 2.2 Power source (e.g. generator) has too low voltage 2.3 Air vents are blocked	2.1 Use a proper extension cord 2.2 Connect to another power source 2.3 Clean the air vents
3. Unsatisfactory result	3.1 Bonnet is worn 3.2 Polish not suitable for work piece material 3.3 No/not enough polish on bonnet 3.4 Too much polish on bonnet	3.1 Replace with new one 3.2 Use proper polish 3.3 Apply polish on bonnet 3.4 Remove some polish from bonnet
4. Excessive vibration/noise or exhaust	4.1 Bonnet is worn 4.2 Bolts/nuts are loose 4.3 Too much pressure on bonnet	4.1 Replace with a new one 4.2 Tighten bolts/nuts 4.3 Do not use excessive pressure while polishing

Recycling and disposal



Waste electrical products should not be disposed of with household waste. Please recycle where facilities exist.

Check with your Local Authority or local store for recycling advice.

Guarantee

We take special care to select high quality materials and use manufacturing techniques that allow us to create products incorporating design and durability. This product (TITAN 1100W Polisher) has a manufacturer's guarantee of 2 years against manufacturing defects, from the date of purchase (if bought in store) or date of delivery (if bought online), at no additional cost.

To make a claim under this guarantee, you must present your proof of purchase (such as a sales receipt, purchase invoice or other evidence admissible under applicable law), please keep your proof of purchase in a safe place. For this guarantee to apply, the product you purchased must be new, it will not apply to second hand or display products. Unless stated otherwise by applicable law, any replacement product issued under this guarantee will only be guaranteed until expiry of the original guarantee period.

This guarantee covers product failures and malfunctions provided the product was used for the purpose for which it is intended and subject to installation, cleaning, care and maintenance in accordance with the information contained in these terms and conditions, in the user manual and standard practice, provided that standard practice does not conflict with the user manual.

This guarantee does not cover defects and damage caused by normal wear and tear or damage that could be the result of improper use, faulty installation or assembly, neglect, accident, misuse, or modification of the product. Unless stated otherwise by applicable law, this guarantee will not cover, in any case, ancillary costs (shipping, movement, costs of uninstalling and reinstalling, labour etc), or direct and indirect damage.

This guarantee does not cover defects and damage caused by or resulting from:

- Normal wear and tear
- Overload, misuse or neglect
- Repairs attempted by anyone other than an authorised agent
- Cosmetic damage
- Damage caused by foreign objects, substances or accidents
- Accidental damage or modification
- Failure to follow manufacturer's guidelines
- Loss of use of the goods

If the product is defective, we will, within a reasonable time, repair or replace it.

Rights under this guarantee are enforceable in the country in which you purchased this product. Guarantee related queries should be addressed to the store you purchased this product from.

The guarantee is in addition to and does not affect your statutory rights.

EC declaration of conformity



(EN) EU DECLARATION OF CONFORMITY
 (FR) DÉCLARATION UE DE CONFORMITÉ
 (PL) DEKLARACJA ZGODNOŚCI UE
 (RO) DECLARAȚIA DE CONFORMITATE UE
 (ES) DECLARACIÓN UE DE CONFORMIDAD
 (PT) DECLARAÇÃO DE CONFORMIDADE UE

Product/ Produit/ Produkt/Produsul/Producto/Produto

- 1100W Polisher/Polisseuse/Szlifyerko-polerka/Lustruitor/Lijadora pulidora/Lixadira polidora
- TTB808PSH
- Serial number: from 000001 to 999999

Name and address of the manufacturer or his authorised representative:

Nom et adresse du fabricant ou de son mandataire:

Nazwa i adres producenta lub jego upoważnionego przedstawiciela:

Denumirea și adresa producătorului sau a reprezentantului său autorizat:

Nombre y dirección del fabricante o de su representante autorizado:

Nome e endereço do fabricante ou do respetivo mandatário:

Kingfisher International Products B.V.,
 Rapenburgerstraat 175E,
 1011 VM Amsterdam,
 The Netherlands

This declaration of conformity is issued under the sole responsibility of the manufacturer.
 La présente déclaration de conformité est établie sous la seule responsabilité du fabricant.
 Niniejsza deklaracja zgodności wydana zostaje na wyłączną odpowiedzialność producenta.
 Prezenta declarație de conformitate este emisă pe răspunderea exclusivă a producătorului.
 La presente declaración de conformidad se expide bajo la exclusiva responsabilidad del fabricante.
 A presente declaração de conformidade é emitida sob a exclusiva responsabilidade do fabricante.

Object of the declaration/Objet de la déclaration/Przedmiot deklaracji/Obiectul declarației/Objeto de la declaración/Objeto da declaração

Product/Produit/Produkt/Produsul/Producto/Produto	Model/Modèle/Model/Modelul/Modelo/Modelo	EAN
1100W Polisher/Polisseuse/Szlifyerko-polerka/Lustruitor/Lijadora pulidora/Lixadira polidora	TTB808PSH	5059340215884

The object of the declaration described above is in conformity with the relevant Union harmonisation legislation:

L'objet de la déclaration décrit ci-dessus est conforme à la législation d'harmonisation de l'Union applicable:

Wymieniony powyżej przedmiot niniejszej deklaracji jest zgodny z odpowiednimi wymaganiami unijnego prawodawstwa harmonizacyjnego:

Obiectul declarației descris mai sus este în conformitate cu legislația relevantă de armonizare a Uniunii:

El objeto de la declaración descrita anteriormente es conforme con la legislación de armonización pertinente de la Unión:

O objeto da declaração acima descrito está em conformidade com a legislação de harmonização da União aplicável:

2006/42/EC as amended	Machinery Directive
2014/30/EU as amended	Directive Electromagnetic compatibility
2011/65/EU as amended	Directive Restriction of the use of certain hazardous substances in electrical and electronic equipment

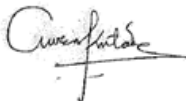
Directive 2006/42/CE relative aux machines
 2014/30/UE telle que modifiée Directive Compatibilité électromagnétique
 Directive 2011/65/UE relative à la limitation de l'utilisation de certaines substances dangereuses dans les équipements électriques et électroniques
 2006/42/WE w zmienionej dyrektywie maszynowej
 2014/30/UE ze zmianami Dyrektywa Kompatybilność elektromagnetyczna
 2011/65/UE ze zmianami Dyrektywa Ograniczenie stosowania niektórych niebezpiecznych substancji w sprzęcie elektrycznym i elektronicznym
 2006/42/CE, astfel a fost modificată Directiva privind echipamentele
 2014/30/UE, astfel a fost modificată Directiva privind compatibilitatea electromagnetică
 2011/65/UE, astfel a fost modificată Directiva privind limitarea utilizării anumitor substanțe periculoase în echipamentele electrice și electronice
 Directiva sobre maquinaria modificada 2006/42/CE
 2014/30/UE modificada Directiva Compatibilidad electromagnética
 2011/65/UE modificada Directiva Restricción del uso de determinadas sustancias peligrosas en equipos eléctricos y electrónicos
 2006/42/CE como diretiva de máquinas alteradas
 2014/30/UE como alteração da compatibilidade eletromagnética
 2011/65/UE como restrição diretiva alterada da utilização de certas substâncias perigosas em equipamentos elétricos e eletrônicos

References to the relevant harmonised standards used or references to the other technical specifications in relation to which conformity is declared:
 Références des normes harmonisées pertinentes appliquées, y compris la date de celles-ci, ou des autres caractéristiques techniques, y compris la date de celles-ci, par rapport auxquelles la conformité est déclarée:
 Odwołania do jednoznacznych norm zharmonizowanych, które zastosowano, wraz z datą normy, lub do innych specyfikacji technicznych, wraz z datą specyfikacji, w odniesieniu do których deklarowana jest zgodność:
 Trimiteri la standardele armonizate relevante folosite, inclusiv data standardului, sau trimiteri la celelalte specificații tehnice, inclusiv data specificațiilor, în legătură cu care se declară conformitatea:
 Referencias a las normas armonizadas pertinentes utilizadas, incluidas las fechas de las normas, o referencias a las otras especificaciones técnicas, incluidas las fechas de las especificaciones, respecto a las cuales se declara la conformidad:
 Referências às normas harmonizadas aplicáveis utilizadas, incluindo a data da norma, ou às outras especificações técnicas, incluindo a data da especificação, em relação às quais é declarada a conformidade:

EN 55014-1:2017+A11:2020
 EN 55014-2:2015
 EN IEC 61000-3-2:2019
 EN 61000-3-3:2013+A1:2019
 EN 60745-1:2009+A11:2010
 EN 60745-2-3:2011+A2:2013+A11:2014+A12:2014+A13:2015

Authorized Signatory and technical file holder/ Signataire et responsable de la documentation technique autorisé/ Podmiot uprawniony do wystawienia i adres przechowywania dokumentacji technicznej/ Semnatar autorizat și deținătorul dosarului tehnic/ Firmante autorizado y titular del expediente técnico/Signatário autorizado e detentor da ficha técnica:

Kingfisher International Products B.V.,
 Rapenburgerstraat 175E,
 1011 VM Amsterdam,
 The Netherlands



David Awe
 Group Quality Director

On: 03/11/2021

In more detail...

EC declaration of conformity

UK
CA

(UK) DECLARATION OF CONFORMITY

Product

- 1100W Polisher
- TTB808PSH
- Serial number: from 000001 to 999999

Name and address of the manufacturer or his authorised representative:

Kingfisher International Products Limited
3 Sheldon Square
London W2 6PX
United Kingdom

This declaration of conformity is issued under the sole responsibility of the manufacturer.

Object of the declaration

Product

Model

EAN

1100W Polisher

TTB808PSH

5059340215884

The object of the declaration described above is in conformity with the relevant legislation:

Supply of Machinery (Safety) Regulations 2008 as amended
Electromagnetic Compatibility Regulations 2016 as amended
The Restriction of the use of Certain Hazardous Substances in Electrical and Electronic Equipment Regulations 2012 as amended

References to the relevant designated standards used or references to the other technical specifications in relation to which conformity is declared:

EN 55014-1:2017+A11:2020
EN 55014-2:2015
EN IEC 61000-3-2:2019
EN 61000-3-3:2013+A1:2019
BS EN 60745-1:2009+A11:2010
BS EN 60745-2-3:2011+A2:2013+A11:2014+A12:2014+A13:2015

Authorized Signatory and technical file holder:

Kingfisher International Products Limited
3 Sheldon Square
London W2 6PX
United Kingdom



David Awe
Group Quality Director

On 03/11/2021

In more detail...

TITAN

**Manufacturer, Fabricant, Producent,
Producător, Fabricante:**

UK Manufacturer:
Kingfisher International Products Limited
3 Sheldon Square
London
W2 6PX
United Kingdom

EU Manufacturer:
Kingfisher International Products B.V.
Rapenburgerstraat 175E
1011 VM Amsterdam
The Netherlands



www.diy.com

www.screwfix.com
www.screwfix.ie

To view instruction manuals online,
visit www.kingfisher.com/products
