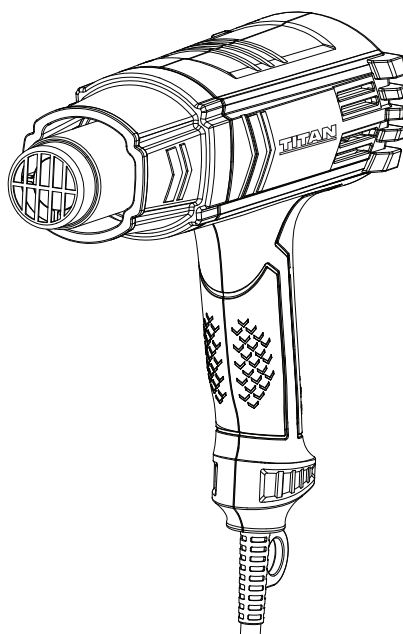




EN

TITAN

2000W Heat Gun



TTB773HTG

EAN: 5059340118321



WARNING: Read the instructions before using the product!

BX220IM

Let's get started...

These instructions are for your safety. Please read through them thoroughly before use and retain them for future reference.



Getting **started**... 02

Technical and legal information	03
Your product	13
Technical specifications	14
Before you start	14



In more **detail**... 18

Product functions	19
Operation	21
Care and maintenance	26
Troubleshooting	28
Recycling and disposal	29
Guarantee	30



Safety warnings

1. This appliance can be used by children aged from 8 years and above and persons with reduced physical, sensory or mental capabilities or lack of experience and knowledge if they have been given supervision or instruction concerning use of the appliance in a safe way and understand the hazards involved.
2. Children shall not play with the appliance. Cleaning and user maintenance shall not be made by children without supervision.
3. If the supply cord is damaged, it must be replaced by the manufacturer, its service agent or similarly qualified persons in order to avoid a hazard.

General power tool safety warnings



WARNING! Read all safety warnings and all instructions. Failure to follow the warnings and instructions may result in electric shock, fire and/or serious injury.

Save all warnings and instructions for future reference.

The term “power tool” in the warnings refers to your mains-operated (corded) power tool or battery-operated (cordless) power tool.

Work area safety

1. **Keep work area clean and well lit.** Cluttered or dark areas invite accidents.
2. **Do not operate power tools in explosive atmospheres, such as in the presence of flammable liquids, gases or dust.** Power tools create sparks which may ignite the dust or fumes.
3. **Keep children and bystanders away while operating a power tool.** Distractions can cause you to lose control.

Safety warnings

Electrical safety

1. **Power tool plugs must match the outlet. Never modify the plug in any way. Do not use any adapter plugs with earthed (grounded) power tools.** Unmodified plugs and matching outlets will reduce risk of electric shock.
2. **Avoid body contact with earthed or grounded surfaces, such as pipes, radiators, ranges and refrigerators.** There is an increased risk of electric shock if your body is earthed or grounded.
3. **Do not expose power tools to rain or wet conditions.** Water entering a power tool will increase the risk of electric shock.
4. **Do not abuse the cord. Never use the cord for carrying, pulling or unplugging the power tool. Keep cord away from heat, oil, sharp edges or moving parts.** Damaged or entangled cords increase the risk of electric shock.
5. **When operating a power tool outdoors, use an extension cord suitable for outdoor use.** Use of a cord suitable for outdoor use reduces the risk of electric shock.
6. **If operating a power tool in a damp location is unavoidable, use a residual current device (RCD) protected supply.** Use of an RCD reduces the risk of electric shock.

Personal safety

1. **Stay alert, watch what you are doing and use common sense when operating a power tool. Do not use a power tool while you are tired or under the influence of drugs, alcohol or medication.** A moment of inattention while operating power tools may result in serious personal injury.



2. **Use personal protective equipment. Always wear eye protection.** Protective equipment such as dust mask, non-skid safety shoes, hard hat, or hearing protection used for appropriate conditions will reduce personal injuries.
3. **Prevent unintentional starting. Ensure the switch is in the off-position before connecting to power source and/or battery pack, picking up or carrying the tool.** Carrying power tools with your finger on the switch or energising power tools that have the switch on invites accidents.
4. **Remove any adjusting key or wrench before turning the power tool on.** A wrench or a key left attached to a rotating part of the power tool may result in personal injury.
5. **Do not overreach. Keep proper footing and balance at all times.** This enables better control of the power tool in unexpected situations.
6. **Dress properly. Do not wear loose clothing or jewellery. Keep your hair, clothing and gloves away from moving parts.** Loose clothes, jewellery or long hair can be caught in moving parts.
7. **If devices are provided for the connection of dust extraction and collection facilities, ensure these are connected and properly used.** Use of dust collection can reduce dust-related hazards.

Power tool use and care

1. **Do not force the power tool. Use the correct power tool for your application.** The correct power tool will do the job better and safer at the rate for which it was designed.
2. **Do not use the power tool if the switch does not turn it on and off.** Any power tool that cannot be controlled with the switch is dangerous and must be repaired.

Safety warnings

3. **Disconnect the plug from the power source before making any adjustments, changing accessories, or storing power tools.** Such preventive safety measures reduce the risk of starting the power tool accidentally.
4. **Store idle power tools out of the reach of children and do not allow persons unfamiliar with the power tool or these instructions to operate the power tool.** Power tools are dangerous in the hands of untrained users.
5. **Maintain power tools. Check for misalignment or binding of moving parts, breakage of parts and any other condition that may affect the power tool's operation. If damaged, have the power tool repaired before use.** Many accidents are caused by poorly maintained power tools.
6. **Keep cutting tools sharp and clean.** Properly maintained cutting tools with sharp cutting edges are less likely to bind and are easier to control.
7. **Use the power tool, accessories and tool bits etc. in accordance with these instructions, taking into account the working conditions and the work to be performed.** Use of the power tool for operations different from those intended could result in a hazardous situation.

Service

1. **Have your power tools serviced by a qualified repair person using only identical replacement parts.** This will ensure that safety of the power tool is maintained.



Safety warnings for heat gun

1. The tool must be placed on its stand when not in use.
2. A fire may result if the product is not used with care, therefore
 - be careful when using the product in places where there are combustible materials;
 - do not apply to the same place for a long time;
 - do not use in presence of an explosive atmosphere;
 - be aware that heat may be conducted to combustible materials that are out of sight;
 - place the product on its stand after use and allow it to cool down before storage;
 - do not leave the product unattended when it is switched on.

Additional safety warnings for heat gun

1. Keep other people as well as pet out of the working area during operation and before the work area is cleaned thoroughly.
2. Do not use the product near flammable liquids or in explosive atmospheres, such as near fumes, gases or dust. The flameless heat from the product may ignite the dust or fumes. Remove materials or debris that may become ignited from work area.
3. Hidden areas such as behind walls, ceilings, floors, soffit boards and other panels may contain flammable materials that may ignite when using the product in these locations. Ignition of these materials may not be readily apparent and could result in property damage and personal injury. Check these areas before applying heat. If in doubt, use a different method.
4. Keep away from the hot air outlet. This product releases an air stream of high temperature that can cause serious burns and personal injury.

Safety warnings

5. Clean up all paint scrapings and dust. Do not sweep, dry dust or vacuum to avoid the paint dust will be thrown up into the air where it can be inhaled or contaminate other areas. Wet mop floors. Use a wet cloth to clean all walls, sills and other surfaces where paint and dust have accumulated.
6. Dispose of paint scrapings properly.
7. Do not obstruct either the air vents or nozzle outlet, as this may cause excessive heat build up resulting in damage to the product.
8. Do not direct the hot air blast at persons.
9. Do not aim the hot airflow at the same area for prolonged periods. Working with plastic, paint, varnish or similar materials may produce easily flammable gases.
10. Safely place the power tool on the storage surfaces after use and let it cool completely before packing it away. The hot nozzle can cause damage.
11. Do not leave the switched-on power tool unattended.
12. Keep your work area well-ventilated. The gas and steam produced during work are often harmful to one's health.
13. Do not use the power tool as a hair dryer or attempt to dry pets.
14. The distance between the nozzle and the workpiece depends on the material you are working on (metal, plastic, etc.) and the intended working method. Always test the amount of air and temperature first.
15. If operating the power tool in a damp location is unavoidable, use a residual current device (RCD) protected supply. Use of an RCD reduces the risk of electric shock.



16. Safety Warnings for stripping paint. Before stripping any paint, you should determine whether the paint contains any lead. Paint containing lead should be removed by a professional and not by using a heat gun.
17. Ideally move the workpiece to an outdoor location. If this is not possible, ensure the work area is well ventilated.
18. Wear an approved dust respirator mask or dual filter mask for dust and fumes. Ensure that the mask fits properly. Disposable paper masks are not adequate.
19. Keep the gun moving when in use to avoid excessive heat build up.
20. Keep food and drink out of the work area. Wash hands and face thoroughly before eating or drinking.

The following information applies to professional users only but is good practice for all users:

Vibration and noise reduction

To reduce the impact of noise and vibration emission, limit the time of operation, use low-vibration and low-noise operating modes as well as wear personal protective equipment.

Take the following points into account to minimise the vibration and noise exposure risks:

1. Only use the product as intended by its design and these instructions.
2. Ensure that the product is in good condition and well maintained.
3. Use correct attachments for the product and ensure they are in good condition.
4. Keep tight grip on the handles/grip surface.
5. Maintain this product in accordance with these instructions and keep it well lubricated (where appropriate).

Safety warnings

6. Plan your work schedule to spread any high vibration tool use across a longer period of time.
7. Prolonged use of the product exposes the user to vibrations that can cause a range of conditions collectively known as hand-arm vibration syndrome (HAVS) e.g. fingers going white; as well as specific diseases such as carpal tunnel syndrome. To reduce this risk when using the product, always wear protective gloves and keep your hands warm.

Emergency

Familiarise yourself with the use of this product by means of this instruction manual. Memorise the safety directions and follow them to the letter. This will help to prevent risks and hazards.

1. **Always be alert when using this product, so that you can recognise and handle risks early.** Fast intervention can prevent serious injury and damage to property.
2. **Switch off and disconnect from the power supply if there are malfunctions.** Have the machine checked by a qualified professional and repaired, if necessary, before you operate it again.

Residual risks

Even if you are operating this product in accordance with all the safety requirements, potential risks of injury and damage remain. The following dangers can arise in connection with the structure and design of this product:

1. Health defects resulting from vibration emission if the product is being used over long periods of time or not adequately managed and properly maintained.







2. Injuries and damage to property due to broken attachments or the sudden impact of hidden objects during use.
3. Danger of injury and property damage caused by flying objects.



WARNING! This product produces an electromagnetic field during operation! This field may under some circumstances interfere with active or passive medical implants! To reduce the risk of serious or fatal injury, we recommend persons with medical implants to consult their doctor and the medical implant manufacturer before operating this product!

Symbols

On the product, the rating label and within these instructions you will find among others the following symbols and abbreviations. Familiarise yourself with them to reduce hazards like personal injuries and damage to property.

V~	Volt, (alternating voltage)
Hz	Hertz
W	Watt
/min or min ⁻¹	Per minute
mm	Millimetre
kg	Kilogram
dB(A)	Decibel (A-rated)
yyWxx	Manufacturing date code; year of manufacturing (20yy) and week of manufacturing (Wxx).
	Lock / to tighten or secure.
	Unlock / to loosen.
	Note / Remark.
	Caution / Warning.



Read the instruction manual.



Wear hearing protection.



Wear eye protection.



Wear respiratory protection.



Wear protective gloves.



Switch the product off and disconnect it from the power supply before assembly, cleaning, adjustments, maintenance, storage and transportation.



Hot surface!



This product is of protection class II. That means it is equipped with enhanced or double insulation.



The product complies with the applicable European directives and an evaluation method of conformity for these directives was done.



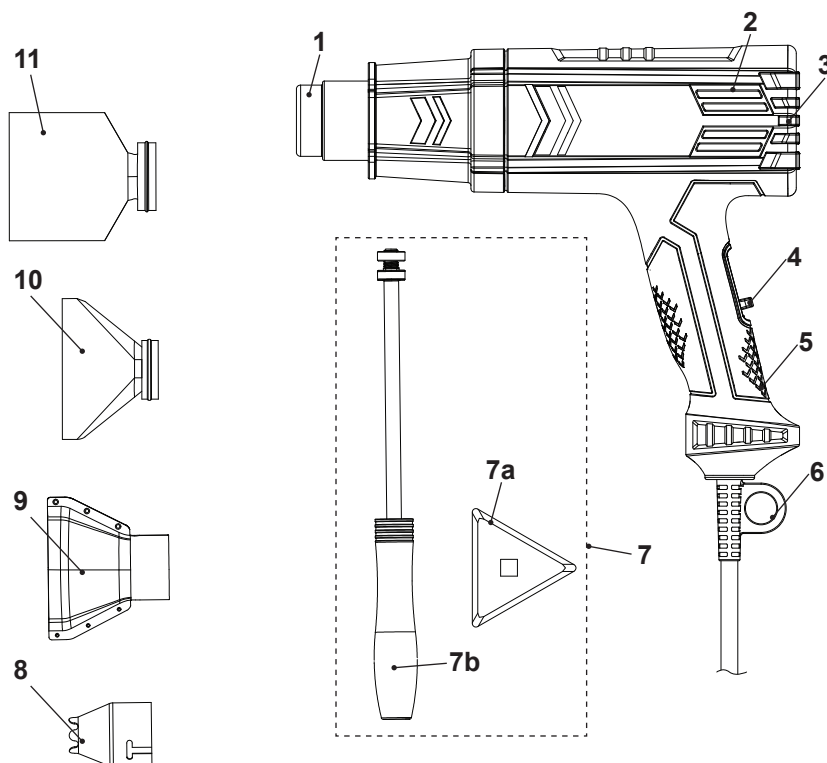
UK Conformity Assessed.



WEEE symbol. Waste electrical products should not be disposed of with household waste. Please recycle where facilities exist. Check with your Local Authority or local store for recycling advice.



Your product




- | | |
|----------------------------------|----------------------------|
| 1. Hot air outlet | 7. Scraper |
| 2. Air vents | a. Blade |
| 3. Stand | b. Handle |
| 4. On/off switch | 8. Concentrator nozzle |
| 5. Handle | 9. Spreader nozzle |
| 6. Power cable with hanging hook | 10. Glass protector nozzle |
| | 11. Reflector nozzle |

Getting started...

Technical specifications

General

- > **Rated voltage/frequency** : 220 – 240 V ~ / 50 Hz
- > **Rated input** : 2000 W
- Temperature/air flow setting**
- > **Switch position I** : 50 °C
- > **Switch position II** : 450 °C
- > **Switch position III** : 600 °C
- > **Protection class** : II 
- > **Weight** : 0.74 kg

Rating Label Explanation

TTB773HTG

TT= TITAN

B = 240AC

773 = Version number

HTG = Heat gun

Unpacking

- > Unpack all parts and lay them on a flat, stable surface.
- > Remove all packing materials and shipping devices if applicable.
- > Make sure the delivery contents are complete and free of any damage. If you find that parts are missing or show damage do not use the product but contact your dealer. Using an incomplete or damaged product represents a hazard to people and property.
- > Ensure that you have all the accessories and tools needed for assembly and operation. This also includes suitable personal protective equipment.



WARNING! The product and the packaging are not children's toys!
Children must not play with plastic bags, sheets and small parts!
There is a danger of choking and suffocation!



You will need

(items not supplied)

Suitable personal protective equipment

(items supplied)

Blade (7a)
Handle (7b)
Concentrator nozzle (8)
Spreader nozzle (9)
Glass protector nozzle (10)
Reflector nozzle (11)

Assembly



WARNING! The product must be fully assembled before operation! Do not use a product that is only partly assembled or assembled with damaged parts! Follow the assembly instructions step-by-step and use the pictures provided as a visual guide to easily assemble the product! Do not connect the product to power supply before it is completely assembled!



NOTE: Take care of small parts that are removed during assembly or when making adjustments. Keep them secure to avoid loss.

Scraper

- > Remove the outer nut (7c) from the thread of handle (7b) (Fig. 1).
- > Place the blade (7a) on the thread.
- > Screw the nut back until the blade is properly fastened.

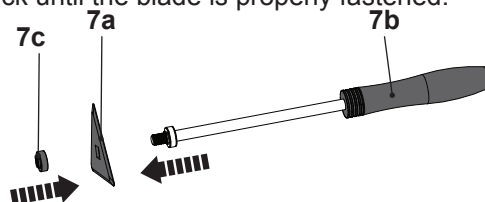


Fig. 1



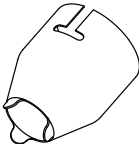
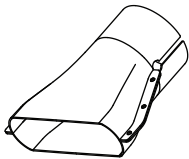
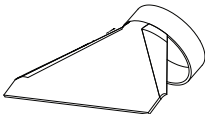

WARNING! Do not touch the blade as it becomes very hot during use and remains hot for up to 30 minutes after use.

Accessories

Different nozzle attachments can be used depending on the work being conducted.



WARNING! Always use accessories according to the intended use! Some accessories are very sharp and become hot during use! Handle them carefully! Wear safety gloves when handling accessories in order to avoid injuries like burns and cuts!

Illustration	Description	Application
	Concentrator nozzle (8)	Direct hot air onto small specific areas.
	Spreader nozzle (9)	Directing a long narrow heat pattern to the workpiece. For removing paint or varnish from large flat surfaces such as skirting boards, doors, stairs etc. To be used in conjunction with the scraper.
	Glass protector nozzle (10)	Deflects the heat away from glass or other fragile areas and back onto the workpiece. Stripping paint and varnish on window sills.
	Reflector nozzle (11)	Direct hot air onto hard to reach, awkward areas or to spread the heat more evenly around copper pipes.



Attaching accessories

- > Align the required nozzle (8 - 11) with the hot air outlet (1) and attach it. Ensure it fits properly (Fig. 2).

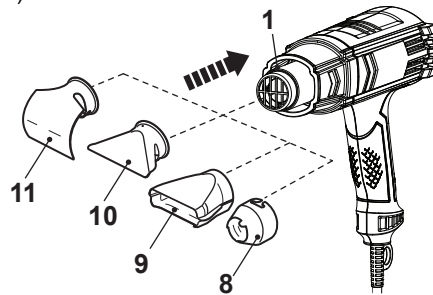


Fig. 2

Removing/replacing accessories

- > After use, let the nozzle cool down before removing it.
- > Remove the nozzle (8 - 11) from the hot air outlet (1) and attach a new nozzle as required.



WARNING! Do not touch the nozzle as it becomes very hot during use and remains hot for up to 30 minutes after use.



Connection to power supply

- > Make sure the on/off switch (4) is in its off position ("0").
- > Connect the plug with a suitable socket.



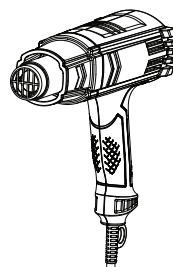
WARNING! Check the voltage! The voltage must comply with the information on the rating label!

- > Your product is now ready to be used.

In more detail...



Product functions	19
Operation	21
Care and maintenance	26
Troubleshooting	28
Recycling and disposal	29
Guarantee	30





Intended use

This heat gun TTB773HTG is designated with a rated input of 2000 Watts.

This product is intended for removing paint, forming and bending of plastic tubes, and the warming of heat-shrinkable tubing, using the respective nozzles. The product is also suitable for soldering and tinning, loosening adhesive joints and defrosting water pipes.

This product must not be used on clothing or drying the hair or other body parts of pets and humans.

For safety reasons it is essential to read the entire instruction manual before first operation and to observe all the instructions therein.

Stand

Always place the product on its stand (3) after operation (Fig. 3).

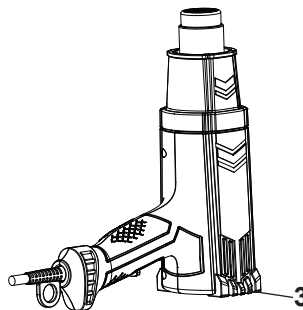



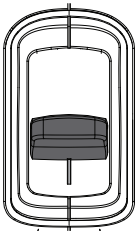
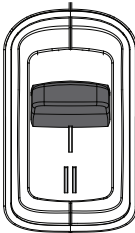
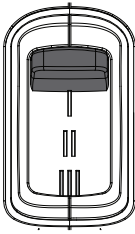
Fig. 3

On/off switch

Set the on/off switch (4) to desired position.

Position	Setting	Applications
	"0" – Off	– Cleaning and storage

On/off switch

Position	Setting	Applications
	"I" – On Cool-off position 50°C	<ul style="list-style-type: none"> – Change the mode from high temperature to cool temperature quickly. – Reducing the cooling time of the product before changing accessories – Reducing the cooling time of the product before storage – Reducing the cooling time of the workpiece
	"II" – On, 450°C	<ul style="list-style-type: none"> – Removing paint – Shrinking plastic sleeves – Soldering pipes – Bending plastic tubes
	"III" – On, 600°C	<ul style="list-style-type: none"> – Removing stickers – Defrosting taps and tubes



NOTE: If you are not sure about the correct setting, start with a low temperature setting and gradually increase the temperature until you achieve optimum results.

Thermal protection

This product is equipped with a self-resettable safety cut-out which will operate to cut off the power supply to the heating elements if the internal temperature gets too high. It will reset automatically when the product has cooled down.



General operation

- > Check the product, its power cord and plug as well as accessories for damage before each use. Do not use the product if it is damaged or shows wear.
- > Double check that accessories or attachments are properly fixed.
- > Always hold the product by its handle. Keep the handle dry and clean to ensure safe support.
- > Ensure that the air vents are always unobstructed and clear. Clean them if necessary with a soft brush. Blocked air vents may lead to overheating and damage the product.
- > Switch the product off immediately if you are disturbed while working with it and when other people enter the working area. Always let the product come to complete stop before putting it down.
- > Do not overwork yourself. Take regular breaks to ensure you can concentrate on the work and have full control over the product.

Operation



WARNING! During operation fumes will be generated! Some fumes and dust are highly inflammable and explosive! Do not smoke during operation, keep heat sources and open flames out of the working area!

Always wear an approved dust mask to protect yourself against hazards resulting from fumes and fine dust!

- > Do not touch hot air outlet or accessory tips, or store the product until the nozzle has cooled to room temperature. Contact with the hot air outlet or accessory tip could result in personal injury.
- > Place the product on its stand in a clear area away from combustible materials while cooling to prevent materials from igniting.
- > Work in a well-ventilated area, open windows and put an exhaust fan in the room. Be sure the fan is moving air from inside to outside. Proper ventilation will reduce the risk of inhaling chemicals found in the fumes or dust created by using this product.
- > Work in one room at a time. Remove furnishings or cover them and place in the centre of the room. Seal doorways with drop cloths to seal work area from the rest of the building.
- > Remove or protect any carpets, rugs, furniture, clothing, cooking utensils and air ducts to prevent contamination and property damage from the paint scrapings. Paint scrapings may ignite if too close to the nozzle.

Operation

- > Place dust sheets in the work area to catch paint scrapings. Wear protective clothing such as hats, extra work shirts and overalls. Paint scrapings may contain chemicals that are hazardous.



NOTE: The proper amount of heat for each application depends on the temperature range selected, distance between the nozzle and workpiece as well as the length of time heat is applied. Experiment with scrap materials and start with the lowest temperature setting.

- > Be careful when working until the proper combination of heat, distance and time of application has been obtained. Use a back and forth motion when applying heat unless concentrated heat is desirable. Pausing or lingering in one spot may ignite or melt the workpiece or the material behind it.

Removing paint

Do not use this product to remove paint containing lead. The peelings, residue and vapours of paint may contain lead, which is poisonous. Any pre-1960 building may have been painted in the past with paint containing lead and covered with additional layers of paint. Once deposited on surfaces, hand to mouth contact can result in the ingestion of lead. Exposure even to low levels of lead can cause irreversible damage to the brain and nervous system. Young and unborn children are particularly vulnerable.

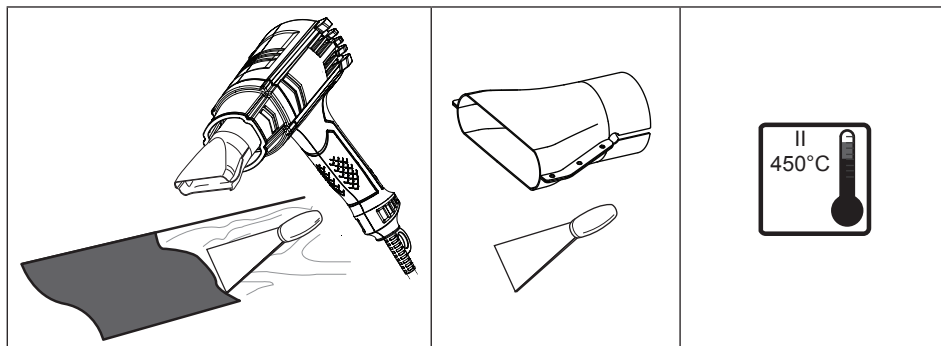
When removing paint, ensure the work area is enclosed. Wear a dust mask.

Do not burn the paint. Use the scraper and keep the nozzle at least 25 mm away from the painted surface. When working in a vertical direction, work downwards to prevent paint from falling into the product and burning.

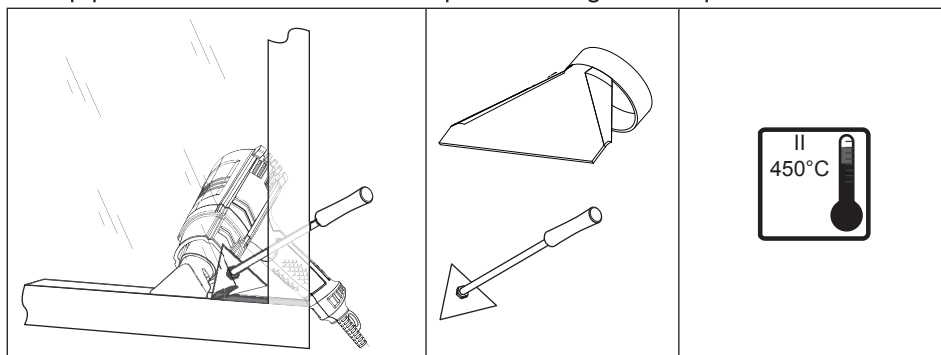
Dispose of all paint debris safely and ensure the work area is thoroughly cleaned after completing the work.

Large surfaces

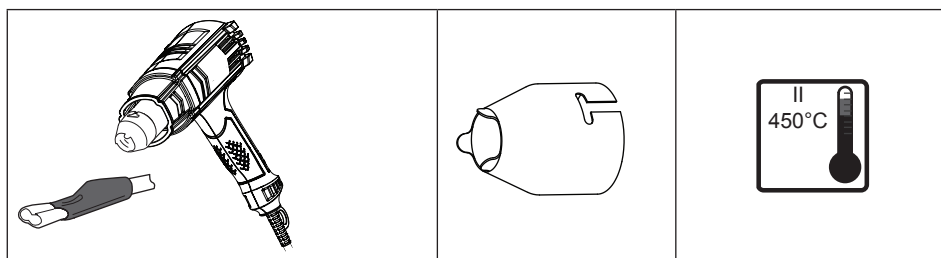
- > Soften the paint using hot air and remove evenly using a spatula.
- > Do not heat the paint for too long since this will burn the paint, making it more difficult to remove.

**Window frames and profiles**

- > Do not apply airflow directly to glass as this may crack or shatter – danger of property damage or personal injury.
- > Strip paints on window frames and profiles using the scraper.

**Shrinking plastic sleeves**

- > Apply the air stream evenly to the sleeve.
- > Avert the air stream once the sleeve shrinks.

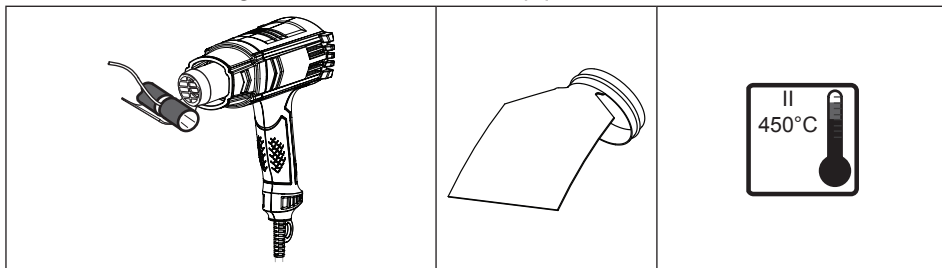


In more detail...

Operation

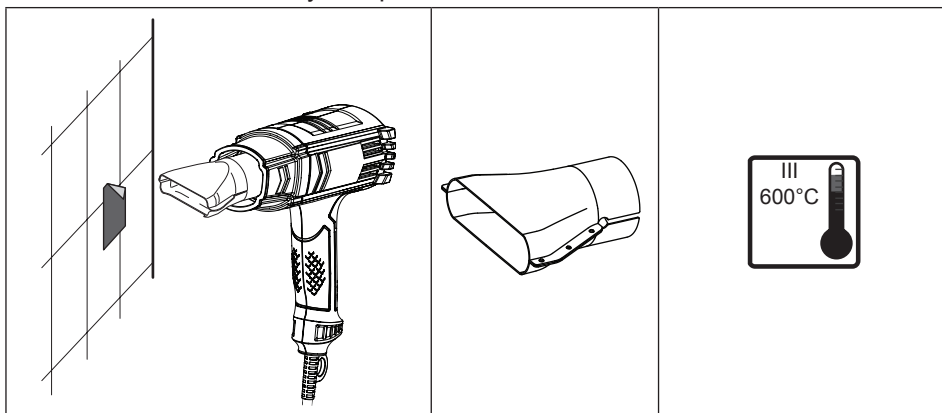
Soldering pipes

- > Apply suitable soldering grease or paste to the pipe ends to be soldered if solder without flux is used.
- > Stick the pipe end together and warm the connection for 1 to 2 minutes depending on the material.
- > Apply the solder which will melt due to the workpiece temperature.
- > Remove remaining flux after the soldered pipes have cooled down.



Removing stickers

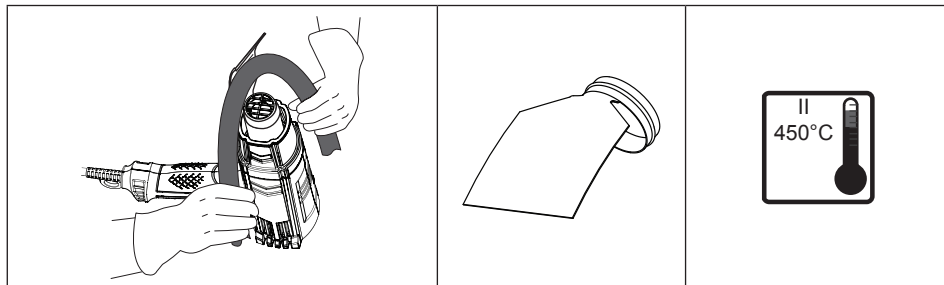
- > Many adhesives (e.g. stickers) become softer when heated allowing adhesive bonds to be separated or adhesive to be removed.
- > Heat the sticker carefully and pull it off.





Bending plastic tubes

- > Fill the tubing with sand and seal at both ends, to avoid kinking the tubing
- > Heat the tubing evenly by moving it from side to side.

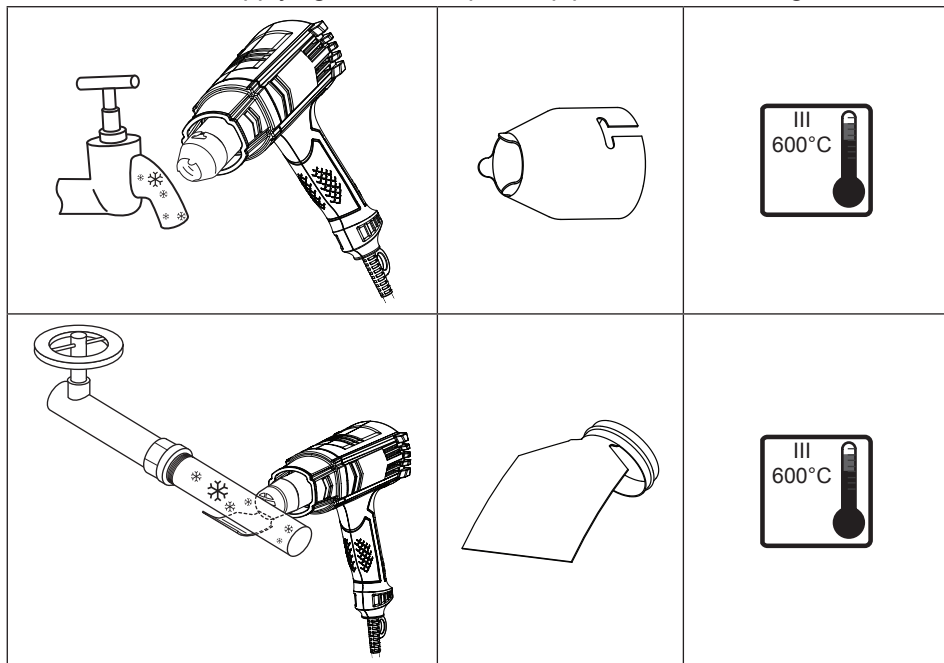


Defrosting taps and tubes



WARNING! Do not attempt to use the product on gas pipes – Danger of explosion! Before defrosting always ensure that the pipe you are going to defrost is a water pipe!

- > Always heat the frozen zone from the outside to the middle.
- > Be careful when applying the heat to plastic pipes to avoid damage.



In more detail...

After use

- > Turn the on/off switch to "I" position and let the product run for a few minutes to reduce the cooling time
- > Switch the product off, place it on its stand (3), disconnect it from the power supply and let it cool down (Fig. 3).
- > Check, clean and store the product as described below.

The golden rules for care



WARNING! Always switch the product off, disconnect it from the power supply and let the product cool down before performing inspection, maintenance and cleaning work!

- > Keep the product clean. Remove debris from it after each use and before storage.
- > Regular and proper cleaning will help ensure safe use and prolong the life of the product.
- > Inspect the product before each use for worn and damaged parts. Do not operate it if you find broken and worn parts.



WARNING! Only perform repairs and maintenance work according to these instructions! All further works must be performed by a qualified specialist!

General cleaning

- > Clean the product with a dry cloth. Use a brush for areas that are hard to reach.
- > In particular clean the air vents (2) after every use with a cloth and brush.
- > Remove stubborn dirt with high pressure air (max. 3 bar).



NOTE: Do not use chemical, alkaline, abrasive or other aggressive detergents or disinfectants to clean this product as they might be harmful to its surfaces.

- > Check for any damage and wear. Repair damages in accordance with this instruction manual or take it to an authorised service centre before using the product again.



Maintenance

Before and after each use, check the product and accessories (such as application tools) for wear and damage. If required, exchange them for new ones as described in this instruction manual. Observe the technical requirements.

Power cord

If the supply cord is damaged, it must be replaced by the manufacturer, its service agent or similarly qualified persons in order to avoid a hazard.

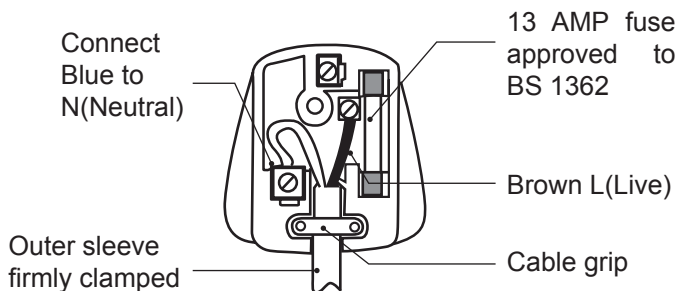
UK plug

If you need to replace the fitted plug, then follow the instructions below.

IMPORTANT: The wires in the mains lead are coloured in accordance with the following code:

Blue – Neutral Brown – Live

As the colours of the wire in the mains lead of this product may not correspond with the coloured marking identifying the terminals in your plug, proceed as follows. The wire, which is coloured blue, must be connected to the terminal, which is marked with N or coloured black. The wire, which is coloured brown, must be connected to the terminal, which is marked L or coloured red.



WARNING! Never connect live or neutral wires to the earth terminal of the plug, which is marked with E.

Only fit an approved 13 Amp BS 1363 or BS 1363/A plug and the correctly rated fuse. If in doubt, consult a qualified electrician.

If a moulded plug is fitted and has to be removed take great care in disposing of the plug and severed cable, it must be destroyed to prevent engaging into a socket..

Repair

This product does not contain any parts that can be repaired by the consumer. Contact an authorised service centre or a similarly qualified person to have it checked and repaired.

Storage

- > Switch the product off and disconnect it from the power supply.
- > Clean the product as described above.
- > Store the product and its accessories in a dry, frost-free place.
- > Always store the product in a place that is inaccessible to children. The ideal storage temperature is between 10°C ~ 30°C.
- > We recommend using the original package for storage or covering the product with a suitable cloth or enclosure to protect it against dust.

Transportation

- > Switch the product off and disconnect it from the power supply.
- > Attach transportation guards, if applicable.
- > Always carry the product on its handle.
- > Protect the product from any heavy impact or strong vibrations which may occur during transportation in vehicles.
- > Secure the product to prevent it from slipping or falling over.

Troubleshooting

Suspected malfunctions are often due to causes that the users can fix themselves. Therefore check the product using this section. In most cases the problem can be solved quickly.



WARNING! Only perform the steps described within these instructions! All further inspection, maintenance and repair work must be performed by an authorised service centre or a similarly qualified specialist if you cannot solve the problem yourself!



Problem	Possible cause	Solution
1. Product does not start	1.1. Not connected to power supply 1.2. Power cord or plug is defective 1.3. Other electrical defect to the product	1.1. Connect to power supply 1.2. Check by a specialist electrician. 1.3. Check by a specialist electrician
2. Product does not reach full power	2.1. Extension cord not suitable for operation with this product 2.2. Power source (e.g. generator) has too low voltage 2.3. Air vents are blocked	2.1. Use a proper extension cord 2.2. Connect to another power source 2.3. Clean the air vents
3. Unsatisfactory result	3.1. Accessory not suitable for workpiece material 3.2. Temperature / airflow not suitable for application	3.1. Use proper accessory 3.2. Adjust temperature / air flow

Recycling and disposal



Waste electrical products should not be disposed of with household waste. Please recycle where facilities exist. Check with your Local Authority or local store for recycling advice.

The product comes in a package that protects it against damage during shipping. Keep the package until you are sure that all parts have been delivered and the product is working properly. Recycle the package afterwards.

In more detail...

Guarantee

We take special care to select high quality materials and use manufacturing techniques that allow us to create products incorporating design and durability. This product (TITAN Heat Gun) has a manufacturer's guarantee of 2 years against manufacturing defects, from the date of purchase (if bought in store) or date of delivery (if bought online), at no additional cost.

To make a claim under this guarantee, you must present your proof of purchase (such as a sales receipt, purchase invoice or other evidence admissible under applicable law), please keep your proof of purchase in a safe place. For this guarantee to apply, the product you purchased must be new, it will not apply to second hand or display products. Unless stated otherwise by applicable law, any replacement product issued under this guarantee will only be guaranteed until expiry of the original guarantee period.

This guarantee covers product failures and malfunctions provided the product was used for the purpose for which it is intended and subject to installation, cleaning, care and maintenance in accordance with the information contained in these terms and conditions, in the user manual and standard practice, provided that standard practice does not conflict with the user manual.

This guarantee does not cover defects and damage caused by normal wear and tear or damage that could be the result of improper use, faulty installation or assembly, neglect, accident, misuse, or modification of the product. Unless stated otherwise by applicable law, this guarantee will not cover, in any case, ancillary costs (shipping, movement, costs of uninstalling and reinstalling, labour etc), or direct and indirect damage.

This guarantee does not cover defects and damage caused by or resulting from:

- Normal wear and tear
- Overload, misuse or neglect
- Repairs attempted by anyone other than an authorised agent
- Cosmetic damage
- Damage caused by foreign objects, substances or accidents
- Accidental damage or modification
- Failure to follow manufacturer's guidelines
- Loss of use of the goods

If the product is defective, we will, within a reasonable time, repair or replace it.

Rights under this guarantee are enforceable in the country in which you purchased this product. Guarantee related queries should be addressed to the store you purchased this product from.

The guarantee is in addition to and does not affect your statutory rights.



TITAN

Manufacturer, Fabricant, Producent,
Producător, Fabricante:

UK Manufacturer:
Kingfisher International Products Limited
3 Sheldon Square
London
W2 6PX
United Kingdom

EU Manufacturer:
Kingfisher International Products B.V.
Rapenburgerstraat 175E
1011 VM Amsterdam
The Netherlands



www.screwfix.com
www.screwfix.ie

To view instruction manuals online,
visit www.kingfisher.com/products