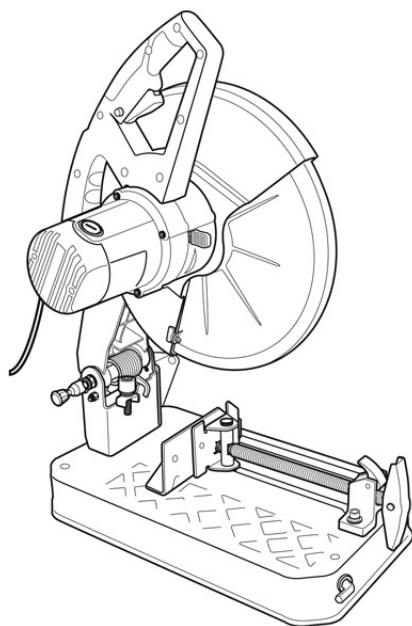


TITAN

CHOP SAW 2100W



TTB599BNS
EAN: 5059340131627



WARNING: Read the instructions before using the product!

BX220IM

Let's get started...

These instructions are for your safety. Please read through them thoroughly before use and retain them for future reference.



Getting **started**... 02

Safety information	03
Your product	20
Before you start	22



In more **detail**... 26

Product functions	27
Operation	30
Care and maintenance	32
Troubleshooting	38
Recycling and disposal	39
Guarantee	40
EC declaration of conformity	41

Safety warnings

General power tool safety warnings



WARNING! Read all safety warnings, instructions, illustrations and specifications provided with this power tool. Failure to follow all instructions listed below may result in electric shock, fire and/or serious injury. Save all warnings and instructions for future reference. The term “power tool” in the warnings refers to your mains-operated (corded) power tool or battery-operated (cordless) power tool.

Work area safety

- > **Keep work area clean and well lit.** Cluttered or dark areas invite accidents.
- > **Do not operate power tools in explosive atmospheres, such as in the presence of flammable liquids, gases or dust.** Power tools create sparks which may ignite the dust or fumes.
- > **Keep children and bystanders away while operating a power tool.** Distractions can cause you to lose control.

Electrical safety

- > **Power tool plugs must match the outlet. Never modify the plug in any way. Do not use any adapter plugs with earthed (grounded) power tools.** Unmodified plugs and matching outlets will reduce risk of electric shock.
- > **Avoid body contact with earthed or grounded surfaces, such as pipes, radiators, ranges and refrigerators.** There is an increased risk of electric shock if your body is earthed or grounded.

Safety warnings

- > **Do not expose power tools to rain or wet conditions.** Water entering a power tool will increase the risk of electric shock.
- > **Do not abuse the cord. Never use the cord for carrying, pulling or unplugging the power tool. Keep cord away from heat, oil, sharp edges or moving parts.** Damaged or entangled cords increase the risk of electric shock.
- > **When operating a power tool outdoors, use an extension cord suitable for outdoor use.** Use of a cord suitable for outdoor use reduces the risk of electric shock.
- > **If operating a power tool in a damp location is unavoidable, use a residual current device (RCD) protected supply.** Use of an RCD reduces the risk of electric shock.

Personal safety

- > **Stay alert, watch what you are doing and use common sense when operating a power tool. Do not use a power tool while you are tired or under the influence of drugs, alcohol or medication.** A moment of inattention while operating power tools may result in serious personal injury.
- > **Use personal protective equipment. Always wear eye protection.** Protective equipment such as a dust mask, non-skid safety shoes, hard hat, or hearing protection used for appropriate conditions will reduce personal injuries.

- > **Prevent unintentional starting.** Ensure the switch is in the off-position before connecting to power source and/or battery pack, picking up or carrying the tool. Carrying power tools with your finger on the switch or energising power tools that have the switch on invites accidents.
- > **Remove any adjusting key or wrench before turning the power tool on.** A wrench or a key left attached to a rotating part of the power tool may result in personal injury.
- > **Do not overreach. Keep proper footing and balance at all times.** This enables better control of the power tool in unexpected situations.
- > **Dress properly. Do not wear loose clothing or jewellery. Keep your hair and clothing away from moving parts.** Loose clothes, jewellery or long hair can be caught in moving parts.
- > **If devices are provided for the connection of dust extraction and collection facilities, ensure these are connected and properly used.** Use of dust collection can reduce dust-related hazards.
- > **Do not let familiarity gained from frequent use of tools allow you to become complacent and ignore tool safety principles.** A careless action can cause severe injury within a fraction of a second.

Power tool use and care

- > **Do not force the power tool. Use the correct power tool for your application.** The correct power tool will do the job better and safer at the rate for which it was designed.
- > **Do not use the power tool if the switch does not turn it on and off.** Any power tool that cannot be controlled with the switch is dangerous and must be repaired.

Safety warnings

- > **Disconnect the plug from the power source and/ or remove the battery pack, if detachable, from the power tool before making any adjustments, changing accessories, or storing power tools.** Such preventive safety measures reduce the risk of starting the power tool accidentally.
- > **Store idle power tools out of the reach of children and do not allow persons unfamiliar with the power tool or these instructions to operate the power tool.** Power tools are dangerous in the hands of untrained users.
- > **Maintain power tools and accessories. Check for misalignment or binding of moving parts, breakage of parts and any other condition that may affect the power tool's operation. If damaged, have the power tool repaired before use.** Many accidents are caused by poorly maintained power tools.
- > **Keep cutting tools sharp and clean.** Properly maintained cutting tools with sharp cutting edges are less likely to bind and are easier to control.
- > **Use the power tool, accessories and tool bits etc. in accordance with these instructions, taking into account the working conditions and the work to be performed.** Use of the power tool for operations different from those intended could result in a hazardous situation.
- > **Keep handles and grasping surfaces dry, clean and free from oil and grease.** Slippery handles and grasping surfaces do not allow for safe handling and control of the tool in unexpected situations.

Service

- > **Have your power tools serviced by a qualified repair person using only identical replacement parts.** This will ensure that safety of the power tool is maintained.

Safety instructions for chop saw

chop saw safety warnings

- > **Position yourself and bystanders away from the plane of the rotating wheel.** The guard helps to protect the operator from broken wheel fragments and accidental contact with wheel.
- > **Use only bonded reinforced or diamond cut-off wheels for your power tool.** Just because an accessory can be attached to your power tool, it does not assure safe operation.
- > **The rated speed of the accessory must be at least equal to the maximum speed marked on the power tool.** Accessories running faster than their rated speed can break and fly apart.
- > **Wheels must be used only for recommended applications. For example: do not grind with the side of a cut-off wheel.** Abrasive cut-off wheels are intended for peripheral grinding, side forces applied to these wheels may cause them to shatter.
- > **Always use undamaged wheel flanges that are of correct diameter for your selected wheel.** Proper wheel flanges support the wheel thus reducing the possibility of wheel breakage.
- > **The outside diameter and the thickness of your accessory must be within the capacity rating of your power tool.** Incorrectly sized accessories cannot be adequately guarded or controlled.

Safety warnings

- > **The arbour size of wheels and flanges must properly fit the spindle of the power tool.** Wheels and flanges with arbour holes that do not match the mounting hardware of the power tool will run out of balance, vibrate excessively and may cause loss of control.
- > **Do not use damaged wheels. Before each use, inspect the wheels for chips and cracks. If the power tool or wheel is dropped, inspect for damage or install an undamaged wheel. After inspecting and installing the wheel, position yourself and bystanders away from the plane of the rotating wheel and run the power tool at maximum no load speed for one minute.** Damaged wheels will normally break apart during this test time.
- > **Wear personal protective equipment. Depending on application, use face shield, safety goggles or safety glasses. As appropriate, wear dust mask, hearing protectors, gloves and shop apron capable of stopping small abrasive or workpiece fragments.** The eye protection must be capable of stopping flying debris generated by various operations. The dust mask or respirator must be capable of filtering particles generated by your operation. Prolonged exposure to high intensity noise may cause hearing loss.
- > **Keep bystanders a safe distance away from work area. Anyone entering the work area must wear personal protective equipment.** Fragments of workpiece or of a broken wheel may fly away and cause injury beyond immediate area of operation.
- > **Position the cord clear of the spinning accessory.** If you lose control, the cord may be cut or snagged and your hand or arm may be pulled into the spinning wheel.

- > **Regularly clean the power tool's air vents.** The motor's fan can draw the dust inside the housing and excessive accumulation of powdered metal may cause electrical hazards.
- > **Do not operate the power tool near flammable materials. Do not operate the power tool while placed on a combustible surface such as wood.** Sparks could ignite these materials.
- > **Do not use accessories that require liquid coolants.** Using water or other liquid coolants may result in electrocution or shock.

Kickback and related warnings

Kickback is a sudden reaction to a pinched or snagged rotating wheel. Pinching or snagging causes rapid stalling of the rotating wheel which in turn causes the uncontrolled cutting unit to be forced upwards toward the operator.

For example, if an abrasive wheel is snagged or pinched by the workpiece, the edge of the wheel that is entering into the pinch point can dig into the surface of the material causing the wheel to climb out or kick out. Abrasive wheels may also break under these conditions.

Kickback is the result of power tool misuse and/or incorrect operating procedures or conditions and can be avoided by taking proper precautions as given below.

- > **Maintain a firm grip on the power tool and position your body and arm to allow you to resist kickback forces.** The operator can control upward kickback forces, if proper precautions are taken.
- > **Do not position your body in line with the rotating wheel.** If kickback occurs, it will propel the cutting unit upwards toward the operator.

Safety warnings

- > **Do not attach a saw chain, woodcarving blade, segmented diamond wheel with a peripheral gap greater than 10 mm or toothed saw blade.** Such blades create frequent kickback and loss of control.
- > **Do not “jam” the wheel or apply excessive pressure. Do not attempt to make an excessive depth of cut.** Overstressing the wheel increases the loading and susceptibility to twisting or binding of the wheel in the cut and the possibility of kickback or wheel breakage.
- > **When the wheel is binding or when interrupting a cut for any reason, switch off the power tool and hold the cutting unit motionless until the wheel comes to a complete stop. Never attempt to remove the wheel from the cut while the wheel is in motion otherwise kickback may occur.** Investigate and take corrective action to eliminate the cause of wheel binding.
- > **Do not restart the cutting operation in the workpiece. Let the wheel reach full speed and carefully re-enter the cut.** The wheel may bind, walk up or kickback if the power tool is restarted in the workpiece.
- > **Support any oversized workpiece to minimize the risk of wheel pinching and kickback.** Large workpieces tend to sag under their own weight. Supports must be placed under the workpiece near the line of cut and near the edge of the workpiece on both sides of the wheel.

Additional safety warnings

- > Always ensure the product is used on a stable and level surface.
- > Choose a worktop that is high enough so that you can operate the product in straight standing position.
- > Ensure that there is sufficient space around the product and for the operator to move.

- Larger workpieces must not touch other objects around when handling them.
 - Ensure the motor unit can be moved in its upper position.
 - The operation handle must be accessible without touching other objects.
- >Mount the product in such way that you can stand in front of it for operation.

Vibration and noise reduction

To reduce the impact of noise and vibration emission, limit the time of operation, use low-vibration and low-noise operating modes as well as wear personal protective equipment.

Take the following points into account to minimise the vibration and noise exposure risks:

- >Only use the product as intended by its design and these instructions.
- >Ensure that the product is in good condition and well maintained.
- >Use correct attachments for the product and ensure they are in good condition.
- >Keep tight grip on the handles/grip surface.
- >Maintain this product in accordance with these instructions and keep it well lubricated (where appropriate).
- >Plan your work schedule to spread any high vibration tool use across a longer period of time.

Safety warnings

Emergency

Familiarise yourself with the use of this product by means of this instruction manual. Memorise the safety directions and follow them to the letter. This will help to prevent risks and hazards.

- > **Always be alert when using this product, so that you can recognise and handle risks early.** Fast intervention can prevent serious injury and damage to property.
- > **Switch off and disconnect from the power supply if there are malfunctions.** Have the product checked by a qualified professional and repaired, if necessary, before you operate it again.

Residual risks

Even if you are operating this product in accordance with all the safety requirements, potential risks of injury and damage remain. The following dangers can arise in connection with the structure and design of this product:

- > Health defects resulting from vibration emission if the product is being used over long periods of time or not adequately managed and properly maintained.
- > Injuries and damage to property due to broken cutting attachments or the sudden impact of hidden objects during use.
- > Danger of injury and property damage caused by flying objects.



WARNING! This product produces an electromagnetic field during operation! This field may under some circumstances interfere with active or passive medical implants! To reduce the risk of serious or fatal injury, we recommend persons with medical implants to consult their doctor and the medical implant manufacturer before operating this product!

The following information applies to professional users only but is good practice for all users:

Additional safety warnings for construction dust

The updated Control of Substances Hazardous to Health Regulations 1st October 2012 now also targets to reduce the risks associated with silica, wood and gypsum dusts. Construction workers are one of the at-risk groups within this because of the dust that they breathe: silica dust is not just a nuisance; it is a real risk to your lungs!

Silica is a natural mineral present in large amounts in things like sand, sandstone and granite. It is also commonly found in many construction materials such as concrete and mortar. The silica is broken into very fine dust (also known as Respirable Crystalline Silica or RCS) during many common tasks such as cutting, drilling and grinding. Breathing in very fine particles of crystalline silica can lead to the development of:

- Lung cancer
- Silicosis
- Chronic Obstructive Pulmonary Disorder (Chronic obstructive pulmonary disease (COPD))

Additional safety warnings for construction dust

And breathing in fine particles of wood dust can lead to the development of Asthma. The risk of lung disease is linked to people who regularly breathe construction dust over a period of time, not on the odd occasion.

To protect the lung, the COSHH Regulations sets a limit on the amount of these dusts that you can breathe (called a Workplace Exposure Limit or WEL) when averaged over a normal working day. These limits are not a large amount of dust: when compared to a penny it is tiny – like a small pinch of salt:

This limit is the legal maximum; the most you can breathe after the right controls have been used.

How to reduce the amount of dust?

1. Reduce the amount of cutting by using the best sizes of building products.
2. Use a less powerful tool e.g. a block cutter instead of angle grinder.
3. Using a different method of work altogether – e.g. using a nail gun to direct fasten cable trays instead of drilling holes first.

Please always work with approved safety equipment, such as those dust masks that specially designed to filter out microscopic particles and use the dust extraction facility at all time.

For more information, please see the HSE website:

<http://www.hse.gov.uk/construction> or <http://www.hse.gov.uk/pubns/cis69.pdf>



WARNING! Some dust particles created by power sanding, sawing, grinding, drill and other construction jobs contain chemicals known to cause cancer, birth defects or other reproductive harm!

Some examples of these chemicals are:

- Lead from lead-based paints.
- Crystalline silica from bricks and cement and other masonry products.
- Arsenic and chromium from chemically treated timber.

Your risk from these exposures varies, depending upon how often you do this type of work. To reduce your exposure to these chemicals:

- Work in a well-ventilated area.
- Work with approved safety equipment, such as those dust masks that are specially designed to filter microscopic particles.

Vibration

The European Physical Agents (Vibration) Directive has been brought in to help reduce hand arm vibration syndrome injuries to power tool users. The directive requires power tool manufacturers and suppliers to provide indicative vibration test results to enable users to make informed decisions as to the period of time a power tool can be used safely on a daily basis and the choice of tool.

SEE TECHNICAL SPECIFICATIONS IN THE INSTRUCTION MANUAL FOR THE VIBRATION LEVELS OF YOUR TOOL.

The declared vibration emission value should be used as a minimum level and should be used with the current guidance on vibration.

Additional safety warnings for construction dust

Calculating the actual period of the actual period off use can be difficult and the HSE website has further information. The declared vibration emission been measured in accordance with a standardised test stated above and may be used to compare one tool with another tool. The declared vibration emission value may also be used in a preliminary assessment of exposure. The declared vibration total value(s) and the declared noise emission value(s) have been measured in accordance with a standard test method and may be used for comparing one tool with another.



WARNING! The vibration emission value during actual use of the power tool can differ from the declared value depending on the ways in which the tool is used dependant on the following examples and other variations on how the tool is used:

How the tool is used and the materials being cut or drilled.
The tool being in good condition and well maintained.
The use the correct accessory for the tool and ensuring it is sharp and in good condition.
The tightness of the grip on the handles.
And the tool is being used as intended by its design and these instructions.

While working with this power tool, hand/arm vibrations occur. Adopt the correct working practices in order to reduce the exposure to vibration. This tool may cause hand-arm vibration syndrome if its use is not adequately managed.



WARNING! Identify safety measures to protect the operator that are based on an estimation of exposure in the actual conditions of use (taking account of all parts of the operating cycle such as the times when the tool is switched off and when it is running idle in addition to the trigger time). Note The use of other tools will reduce the users' total working period on this tool.

Helping to minimise your vibration exposure risk. ALWAYS use sharp chisels, drills and blades.

Maintain this tool in accordance with these instructions and keep well lubricated (where appropriate).

Avoid using tools in temperatures of 10 °C or less. Plan your work schedule to spread any high vibration tool use across a number of days.

Health surveillance

All employees should be part of an employer's health surveillance scheme to help identify any vibration related diseases at an early stage, prevent disease progression and help employees stay in work.

Through poor conditions of the electrical MAINS, shortly voltage drops can appear when starting the EQUIPMENT. This can influence other equipment (e.g. blinking of a lamp). If the MAINS-IMPEDANCE $Z_{max} < 0.291 \text{ OHM}$, such disturbances are not expected. (In case of need, you may contact your local supply authority for further information.

Symbols

On the product, the rating label and within these instructions you will find among others the following symbols and abbreviations. Familiarise yourself with them to reduce hazards like personal injuries and damage to property.

V~	Volt, (alternating voltage)	mm	Millimetre
Hz	Hertz	kg	Kilogram
W	Watt	dB(A)	Decibel (A-rated)
/min or min ⁻¹	Per minute	m/s ²	Metres per second squared



Lock / to tighten or secure.



Unlock / to loosen.



Note / Remark.



Caution / Warning.



Read the instruction manual.



Wear hearing protection.



Wear eye protection.



Wear a dust mask.



Wear protective gloves.



Wear protective, slip-resistant footwear.

yyWxx

Manufacturing date code; year of manufacturing (20yy) and week of manufacturing (Wxx)



Switch the product off and disconnect it from the power supply before assembly, cleaning, adjustments, maintenance, storage and transportation.



Indoor use only.



Danger of injury due to rotating attachment. Pay attention to your fingers! Keep your hands and fingers away from the attachment.



Not permitted for hand-held machines.



Not permitted for wet grinding.



Not permitted for face grinding.



Use only for straight cutting-off.



Do not use a cracked or damaged cutting-off wheel.



For cutting-off metal only.



Not for cutting-off wood.



Do not expose the product to rain or wet conditions.



This product is of protection class II. That means it is equipped with enhanced or double insulation.



The product complies with the applicable European directives and an evaluation method of conformity for these directives was done.



WEEE symbol. Waste electrical products should not be disposed of with household waste. Please recycle where facilities exist. Check with your Local Authority or local store for recycling advice.

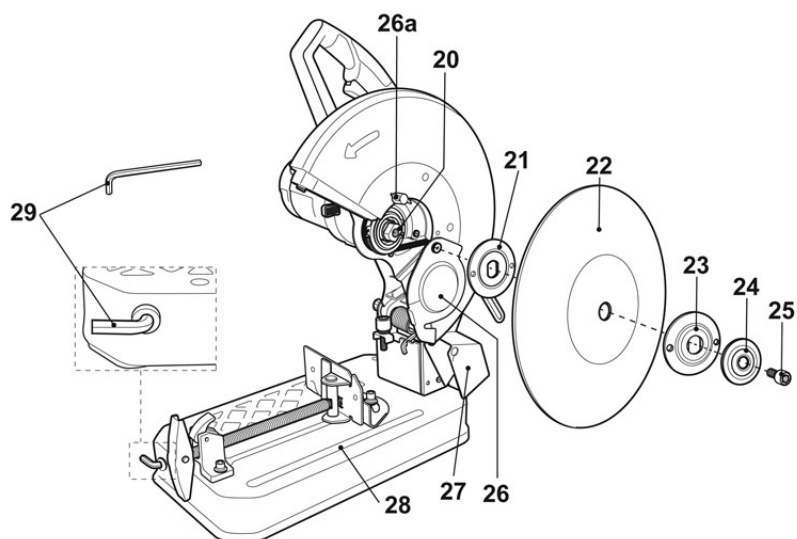
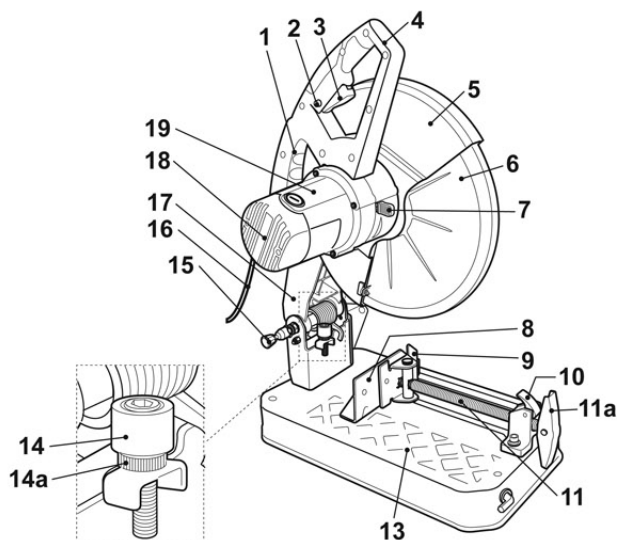


UK
CA

UK Conformity Assessed.

Your product

Getting started...



- | | |
|---------------------------|--------------------------|
| 1. Transportation handle | 14. Adjusting screw |
| 2. Lock-off button | a. Locking nut |
| 3. On/off switch | 15. Unlocking pin |
| 4. Operation handle | 16. Power cord with plug |
| 5. Upper guard (fixed) | 17. Support |
| 6. Lower guard (moveable) | 18. Air vents |
| 7. Spindle lock button | 19. Motor unit |
| 8. Mitre gauge | 20. Spindle |
| a. Mounting bolt* (x 2) | 21. Backing flange |
| b. Spring ring* (x 2) | 22. Cutting-off wheel |
| c. Washer* (x 2) | 23. Locking flange |
| d. Scale* | 24. Washer |
| 9. Fence | 25. Locking bolt |
| 10. Unlocking lever | 26. Cover |
| 11. Vice | a. Wing screw |
| a. Handle | 27. Spark arrestor |
| 12. Foot* (x 4) | 28. Slot |
| 13. Cutting table | 29. Hex key |
| a. Mounting hole* | |



NOTE: Parts marked with * are not shown in this overview. Please refer to the respective section in the instruction manual.

Technical specification

General

- | | |
|-----------------------------|--------------------------|
| > Rated voltage, frequency | : 220 – 240 V~, 50 Hz |
| > Rated power input | : 2100 W |
| > Rated no-load speed n_0 | : 4000 min ⁻¹ |
| > Max. cutting depth | : 80 mm |

- | | |
|--------------------|--|
| > Protection class | : II  |
| > Weight | : 17.5 kg |
| > Dimensions | : 600 x 300 x 370 mm |

Sound values

- | | |
|-----------------------------------|--------------|
| > Sound pressure level L_{pA} | : 97 dB (A) |
| > Sound power level L_{WA} | : 108 dB (A) |
| > Uncertainty K_{pA} , K_{WA} | : 3 dB(A) |

Technical specification



WARNING! This cutting-off machine can only be used together with bonded reinforced wheel! Any other wheel such as diamond wheel etc., must not be used!

Cutting-off wheel

> Dimensions	: Ø 355 x 3.2x 25.4mm
> Bond type	: BF
> Grit	: A30
> Hardness grade	: R
> Max. operating speed	: 80 m/s
> Maximum permissible speed of rotation of the unused abrasive product	: 4400 min ⁻¹
> Expiration date	: see side of the cutting-off wheel

The sound values have been determined according to noise test code given in EN 62841-1 and EN 62841-3-10.

The sound intensity level for the operator may exceed 80 dB(A) and ear protection measures are necessary.



WARNING! The vibration and noise emissions during actual use of the power tool can differ from the declared values depending on the ways in which the tool is used especially what kind of workpiece is processed!

Identify safety measures to protect the operator that are based on an estimation of exposure in the actual conditions of use (taking account of all parts of the operating cycle such as the times when the tool is switched off and when it is running idle in addition to the trigger time)!

Rating Label Explanation

TTB599BNS=MODEL NUMBER

TT=TITAN

B=240V AC

599=Next number in the sequence

BNS=CHOP SAW

Unpacking

- > Unpack all parts and lay them on a flat, stable surface.
- > Remove all packing materials and shipping devices, if applicable.

- > Make sure the delivery contents are complete and free of any damage. If you find that parts are missing or show damage do not use the product but contact your dealer. Using an incomplete or damaged product represents a hazard to people and property.
- > Ensure that you have all the accessories and tools needed for assembly and operation. This also includes suitable personal protective equipment.



WARNING! The product and the packaging are not children's toys! Children must not play with plastic bags, sheets and small parts! There is a danger of choking and suffocation!

You will need

(items not supplied)

Suitable personal protective equipment
Brush
Soft cloth
Light machine oil
Mounting material (e. g. mounting set, working tools etc.)
Coolant
Wire brush

(items supplied)

Hex key (29)

Setup



WARNING! The product must be fully assembled before operation! Do not use a product that is only partly assembled or assembled with damaged parts!



Follow the assembly instructions step-by-step and use the pictures provided as a visual guide to easily assemble the product! Do not connect the product to power supply before it is completely assembled!



NOTE: The product is delivered with a pre-assembled cutting-off wheel. Before use ensure it is properly attached and free of damage.

Operation handle

Before use, the operation handle (4) must be unlocked. When not in use, during transportation and storage, ensure the operation handle (4) is securely locked.

Operation handle

Transportation / storage position

- > Guide the motor unit (19) downwards by pressing the operation handle (4) down.
- > Once the lowest position is reached, push the unlocking pin (15) in to lock the motor unit in position (Fig. 1).
- > Ensure the motor unit (19) is properly locked before releasing the operation handle (4).

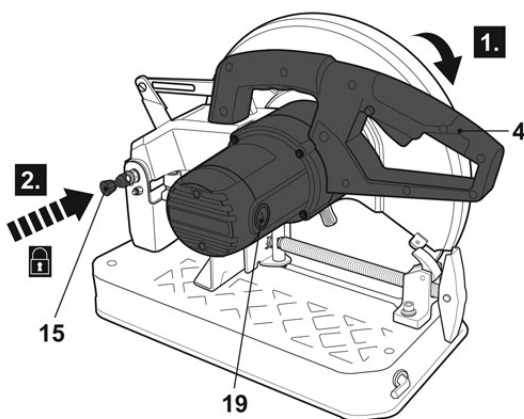


Fig. 1



WARNING! Only transport the product on its transportation handle (1)! Never attempt to use the operation handle (4)!

Operation position

- > Apply slight pressure downward on the operation handle (4) and pull the unlocking pin (15) out to unlock the motor unit (19).
- > Slowly guide the motor unit upwards to the full height (Fig. 2).
- > Release the unlocking pin afterward.

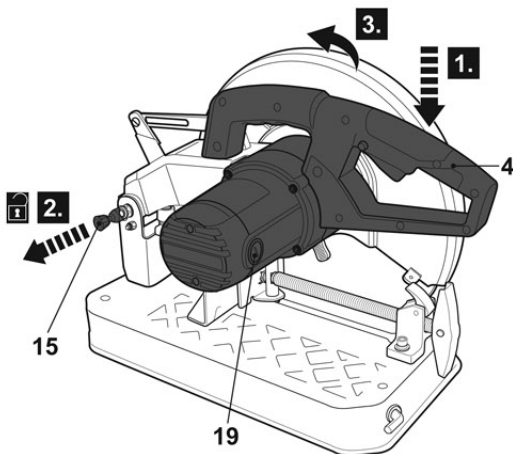


Fig. 2



WARNING! Do not release the operation handle (4) unless the motor unit (19) is in its upper position! Sudden jolt up of the motor unit can lead to personal injuries!

Bench mounting



WARNING! Make sure that the mounting surface is not warped as an uneven surface can cause bending and inaccurate sawing!

- > There are 2 mounting holes (13a) on the cutting table (13) to facilitate bench mounting.
- > Place the product on a level, horizontal bench or work table and fix the product on it with 2 mounting sets (not provided) (Fig. 3).

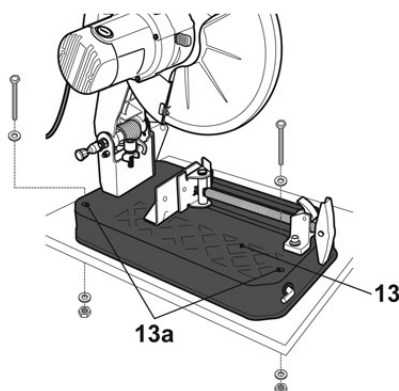


Fig. 3

Connection to power supply

- > Make sure the on/off switch (3) is not pressed.



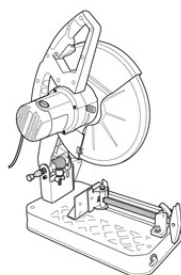
WARNING! Check the voltage! The voltage must comply with the information on the rating label!

- > Connect the plug with a suitable socket.
- > Your product is now ready to be used.

In more detail...



Product functions	27
Operation	30
Care and maintenance	32
Troubleshooting	38
Recycling and disposal	39
Guarantee	40
EC declaration of conformity	41



Intended use

This chop saw TTB599BNS is designated with a rated power of 2100 Watts. This product is intended for cutting ferrous metal materials using a proper cutting-off wheel. An angle up to 45° can be performed with the mitre gauge. Other materials such as wood, plastic or magnesium may not be worked on with this product. This product is exclusively for dry cutting. The maximum cutting depth may not be exceeded.

The product must only be used stationary mounted to a suitable worktop. For safety reasons it is essential to read the entire instruction manual before first operation and to observe all the instructions therein.

This product must not be used for any purposes other than those described.

Adjusting screw

Check the operating position of cutting-off wheel before each use, especially after replacement of the cutting-off wheel (22). Use the adjusting screw (14) to adjust the height.

> Apply slight pressure on the operation handle (4) to lower the motor unit (19) until the support (17) touches the adjusting screw (14).



WARNING! The outer edge of the cutting-off wheel must be positioned within the slot (Fig. 4)! When adjusting ensure the outer edge is not positioned too deep and does not touch the surface below the slot!

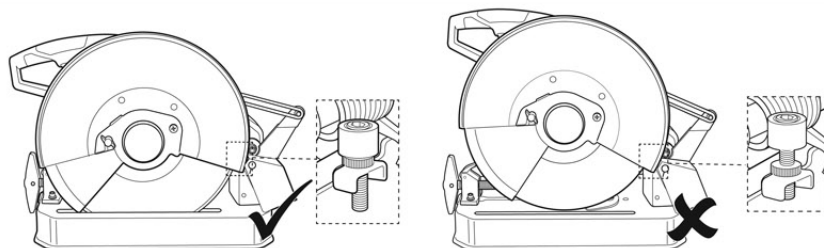


Fig.4

- > Loosen the locking nut (14a) and turn the adjusting screw (14) clockwise to increase the lowering depth of the motor unit (19) or anticlockwise to decrease the lowering depth of the motor unit (19).
- > Tighten the locking nut (14a) to secure the adjusting screw (14) in position. Ensure the lowering depth of the motor unit (19) is correct.

Adjusting screw



WARNING! The cutting-off wheel is subject to wear, as a result the total diameter decreases and the cutting-off wheel cannot be lowered completely to a sufficient depth cutting the workpiece any longer! If the outer edge of the cutting-off wheel does not run within the slot even after adjusting the adjusting screw to its lowest position the cutting-off wheel must be replaced with a new one!

Mitre gauge

According to the workpiece to be cut, adjust the mitre gauge (8) in one of the two positions on the cutting table (13) before use. The mitre gauge angle can also be adjusted from -15° to $+45^\circ$.

Attaching

- > Loosen the mounting bolts (8a) with the hex key (29) and remove them from the cutting table (13) together with the spring rings (8b), washers (8c) and mitre gauge (8).
- > Place the mitre gauge (8) in the required position and secure it to the cutting table (13) with the washers (8c), spring rings (8b) and mounting bolts (8a) (Fig. 5).

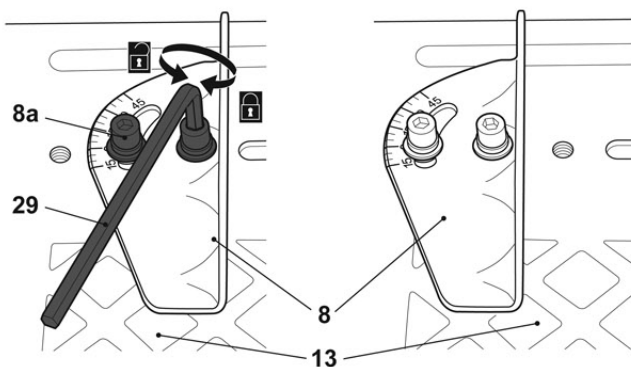


Fig.5

Adjusting

- > Loosen the mounting bolts (8a) on the scale (8d) with the hex key (29) and adjust the mitre gauge (8) to the required angle (Fig. 6).

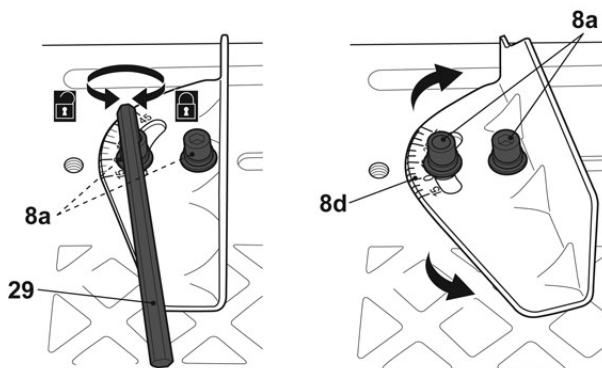


Fig. 6

- > Tighten the bolts afterwards. Ensure the mitre gauge is locked in place.

Preparation



WARNING! Always clamp the workpiece! Never try to work on a workpiece placed freely or only held by hand! Workpieces that are too small or wide to be clamped securely may not be processed! Supports must be placed under the workpiece near the line of cut and near the edge of the workpiece on both sides of the wheel.

- > Disengage the unlocking lever (10) and pull the vice (11) outwards (Fig. 7).

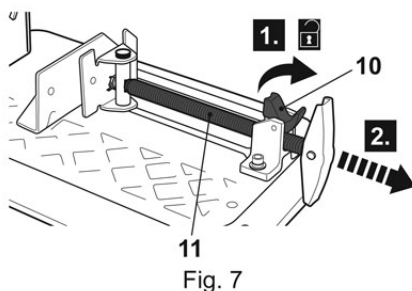


Fig. 7

Preparation

- > Place the workpiece onto the cutting table (13) between the fence (9) and mitre gauge (8).
- > Slide the vice (11) forward until the mitre gauge (8) lies against the workpiece edge (Fig. 8, step 1).
- > Engage the unlocking lever (10) (Fig. 8, step 2).
- > Turn the handle (11a) clockwise to clamp the workpiece securely (Fig. 8, step 3).

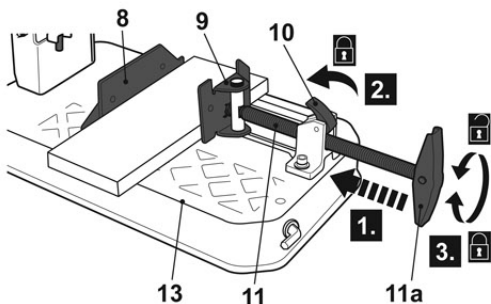


Fig. 8

Switching on/off

- > Press and hold the lock-off button (2) and then squeeze the on/off switch (3) to switch the product on (Fig. 9). Release the lock-off button afterward.
- > Release the on/off switch (3) to switch the product off.

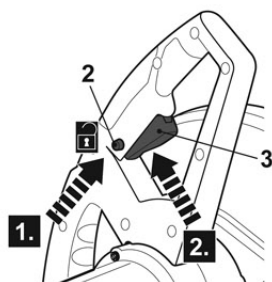


Fig. 9

General operation

- > Check the product, its power cord and plug as well as accessories for damage before each use. Do not use the product if it is damaged or shows wear.
- > Double check that the accessories and attachments are properly fixed.
- > Always hold the product on its handle. Keep the handle dry to ensure safe support.
- > Ensure that the air vents are always unobstructed and clear. Clean them if necessary with a soft brush. Blocked air vents may lead to overheating and damage the product.

- > Switch the product off immediately if you are disturbed while working by other people entering the working area. Always let the product come to complete stop before moving away.
- > Do not overwork yourself. Take regular breaks to ensure you can concentrate on the work and have full control over the product.

Cutting



WARNING! Wear suitable personal protective equipment, such as safety gloves and hearing protection, when performing cutting-off operations!



- > Ensure the workpiece is free of obstacles before operation. Remove them if required.
- > Ensure that the workpiece is clamped securely. Do not cut a workpiece that is placed freely or only held by hand.
- > Wait until the cutting-off wheel (22) is running at its full speed before lowering it into the workpiece.
- > Consider the cutting edge when cutting on marked lines. Do not cut directly on the marking but next to it (Fig. 10).
- > Hold the handle to lower the cutting-off wheel (22) slowly with even pressure through the workpiece.
- > Keep moving at all times. Do not rest in position to avoid grooves.
- > Always be aware of kickback when working with this product.
- > Guide the motor unit (19) upward after the cut and switch the product off.
- > Wait until the cutting-off wheel (22) has come to a complete stop before removing the workpiece and waste piece.

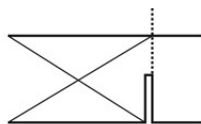


Fig. 10



WARNING! Switch the product off, let it come to a complete stop and disconnect it from the power supply if the cutting-off wheel gets stuck in the workpiece. Only then free the jammed attachment.



In more detail...

Mitre crosscut



WARNING! Always switch the product off and disconnect it from power supply before making any adjustments!



A crosscut is made by cutting across the grain of the workpiece. A 90° crosscut is made with the turntable set at 0°. Mitre crosscuts are made with the turntable set at some angle other than 0°.

- > Loosen the mounting bolts (8a) on the scale (8d) and adjust to the required angle. Tighten the mounting bolts afterwards.
- > Clamp the workpiece as described above between the mitre gauge (8) and fence (9). The fence adjusts to the orientation of the workpiece.
- > Perform the cut as described above.

After use

- > Switch the product off, disconnect it from the power supply and let it cool down.
- > Check, clean and store the product as described below.

The golden rules for care



WARNING! Always switch the product off, disconnect the product from the power supply and let the product cool down before performing inspection, maintenance and cleaning work!



- > Keep the product clean. Remove debris from it after each use and before storage.
- > Regular and proper cleaning will help ensure safe use and prolong the life of the product.
- > Inspect the product before each use for worn and damaged parts. Do not operate it if you find broken and worn parts.



WARNING! Only perform repairs and maintenance work according to these instructions! All further works must be performed by a qualified specialist!

General cleaning

- > Clean the product with a dry cloth. Use a brush for areas that are hard to reach.
- > In particular clean the air vents (18) after every use with a cloth and brush.
- > Remove stubborn dirt with high pressure air (max. 3 bar).



NOTE: Do not use chemical, alkaline, abrasive or other aggressive detergents or disinfectants to clean this product as they might be harmful to its surfaces.

- > Check for worn or damaged parts. Replace worn parts as necessary or contact an authorised service centre for repair before using the product again.

Maintenance

Before and after each use, check the product and accessories (or attachments) for wear and damage. If required, exchange them for new ones as described in this instruction manual. Observe the technical requirements.

Cutting-off wheel

Notes

- > Check the cutting-off wheel before every use for damage and wear. Replace it with a new one if required.
- > Only use a cutting-off wheel that is suitable for the intended application.
- > Do not use any saw blade.

Replacing



WARNING! Always use the correct cutting-off wheel according to the intended use!



Observe the technical requirements of this product (see section Technical specifications) when purchasing and using cutting-off wheels! Cutting-off wheels become hot during use! Handle them carefully! Wear safety gloves when handling cutting-off wheels in order to avoid injuries like burns!



WARNING! Never press the spindle lock button whilst the spindle is rotating!

Cutting-off wheel



WARNING! Always allow the motor of the product to come to a complete stop before engaging the spindle lock!

Always make sure that the spindle lock is disengaged before reconnecting the product to the power supply!

> Turn the wing screw (26a) anticlockwise to unlock it but do not remove the wing screw. Then, rotate the cover (26) to expose the locking hardware (Fig. 11).

> Insert the hex key (29) onto the locking bolt (25).

> Rotate the wheel assembly with the hex key (29) until the pin of the spindle lock button (7) can be pushed into one of the hole of the backing flange (21), through the notch on the lower guard (6). Ensure it engages properly in place, locking the spindle (20).

> While holding the spindle lock button (7) in position, loosen the locking bolt (25) with the hex key (29) and remove it together with the washer (24) and locking flange (23) (Fig. 12).

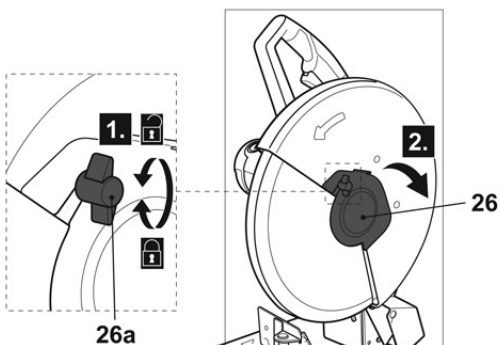


Fig. 11

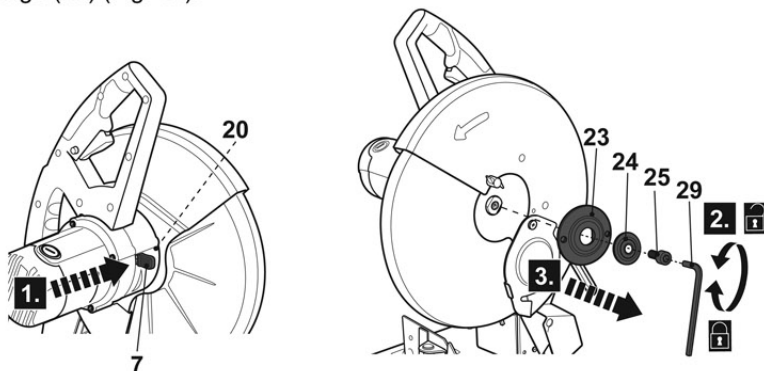


Fig. 12

- > Release the spindle lock button (7) and open the lower guard (6) fully. Hold it in position.
- > Remove the cutting-off wheel (22) and replace it with a new one (Fig. 13). Carefully release the lower guard (6) afterwards.

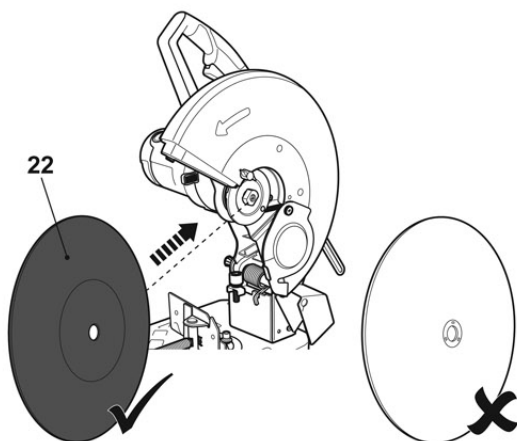


Fig. 13



NOTE: Install the cutting-off wheel with the metal inner ring facing towards the spindle and not outwards (Fig. 13).



NOTE: When replacing the cutting-off wheel (22), clean the spindle (20), flanges (21, 23) and washer (24). Wipe a drop of oil onto the flanges, washer and spindle if necessary.

- > Place the locking flange (23) onto the spindle (20).



NOTE: Pay attention to the flat inner surfaces of the locking flange (23). They must sit on the flat edges of the spindle (20).

- > Place the washer on the locking bolt and hand tighten the locking bolt (25) clockwise onto the spindle (20)
- > Push the spindle lock button (7) to engage its pin into one of the hole of the backing flange (21), through the notch on the lower guard (6).

In more detail...

Cutting-off wheel

- > Tighten the locking bolt (25) clockwise onto the spindle (20) with the hex key (29) (Fig. 14). Release the spindle lock button (7) afterwards.

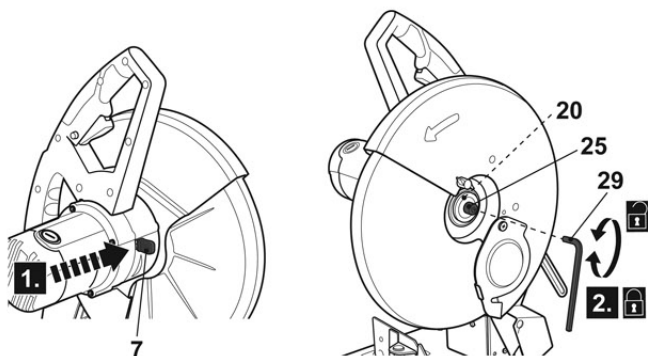


Fig. 14



NOTE: Do not overtighten the locking bolt (25). Excessive pressure on the cutting-off wheel can cause cracks.

- > Rotate the cover (26) so that the notch on the cover engages onto the wing screw (26a). Turn the wing screw clockwise to lock the cover in place. Do not overtighten.
- > Open the lower guard (6) and turn the cutting-off wheel (22) by hand. Ensure the wheel rotates smoothly, sits straight and stable in place and does not touch any parts of the product. Slowly lower the guard (6) afterwards.

Power cord

If the power cord is damaged, it must be replaced by the manufacturer, its service agent or similarly qualified persons in order to avoid a safety hazard.

UK plug

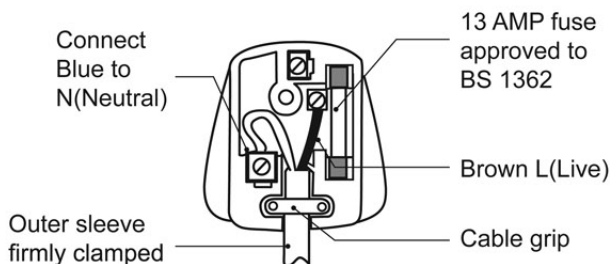
If you need to replace the fitted plug, then follow the instructions below.

IMPORTANT: The wires in the mains lead are coloured in accordance with the following code:

Blue – Neutral

Brown – Live

As the colours of the wire in the mains lead of this product may not correspond with the coloured marking identifying the terminals in your plug, proceed as follows. The wire, which is coloured blue, must be connected to the terminal, which is marked with N or coloured black. The wire, which is coloured brown, must be connected to the terminal, which is marked L or coloured red.



WARNING! Never connect live or neutral wires to the earth terminal of the plug, which is marked with E.

Only fit an approved BS 1363 or BS 1363/A plug and correctly rated BS 1362 13 Amp fuse. If in doubt, consult a qualified electrician.



NOTE: If a moulded plug is fitted and has to be removed take great care in disposing of the plug and severed cable, it must be destroyed to prevent engaging into a socket.

Repair

This product does not contain any parts that can be repaired by the consumer. Contact an authorised service centre or a similarly qualified person to have it checked and repaired.

In more detail...

Storage

- > Switch the product off and disconnect it from the power supply.
- > Clean the product as described above.
- > Adjust the operation handle in its transportation / storage position.
- > Store the product and its accessories in a dark, dry, frost-free, well-ventilated place.
- > Always store the product in a place that is inaccessible to children. The ideal storage temperature is between 10 °C and 30 °C.
- > We recommend using the original package for storage or covering the product with a suitable cloth or enclosure to protect it against dust.

Transportation

- > Switch the product off and disconnect it from the power supply.
- > Adjust the operation handle in its transportation / storage position.
- > Attach transportation guards, if applicable.
- > Always carry the product by its transportation handle.
- > Protect the product from any heavy impact or strong vibrations which may occur during transportation in vehicles.
- > Secure the product to prevent it from slipping or falling over.

Troubleshooting

Suspected malfunctions are often due to causes that the users can fix themselves. Therefore check the product using this section. In most cases the problem can be solved quickly.



WARNING! Only perform the steps described within these instructions! All further inspection, maintenance and repair work must be performed by an authorised service centre or a similarly qualified specialist if you cannot solve the problem yourself!

Problem	Possible cause	Solution
1. Product does not start	1.1. Not connected to power supply 1.2. Defective power cord or plug 1.3. Other electrical defect to the product	1.1. Connect to power supply 1.2. Check by a specialist electrician 1.3. Check by a specialist electrician
2. Product does not reach full power	2.1. Extension cord not suitable for operation with this product 2.2. Power source (e.g. generator) has too low voltage 2.3. Blocked air vents	2.1. Use a proper extension cord 2.2. Connect to another power source 2.3. Clean the air vents
3. Unsatisfactory result	3.1. Dull/damaged cutting-off wheel 3.2. Cutting-off wheel not suitable for work piece material 3.3. Overheated cutting-off wheel 3.4. Glazed cutting-off wheel 3.5. Workpiece material not clamped/placed properly	3.1. Replace with new one 3.2. Use proper cutting-off wheel 3.3. Let the work cool down before using again. Use coolant if needed 3.4. Slightly clean the edge of the blade with a wire brush before use 3.5. Clamp / place the workpiece properly before cutting
4. Excessive vibration or noise	4.1. Dull/damaged cutting-off wheel 4.2. Loose bolts/nuts	4.1. Replace with a new one 4.2. Tighten bolts/nuts

In more detail...

Recycling and disposal

- > The product comes in a package that protects it against damage during shipping. Keep the package until you are sure that all parts have been delivered and the product is working properly. Recycle the package afterwards.
- > WEEE symbol. Waste electrical products should not be disposed of with household waste. Please recycle where facilities exist. Check with your Local Authority or local store for recycling advice.



Guarantee

We take special care to select high quality materials and use manufacturing techniques that allow us to create products incorporating design and durability. This product (TITAN 2100W Chop Saw) has a manufacturer's guarantee of 2 years against manufacturing defects, from the date of purchase (if bought in store) or date of delivery (if bought online), at no additional cost for normal (non-professional or commercial) household use.

To make a claim under this guarantee, you must present your proof of purchase (such as a sales receipt, purchase invoice or other evidence admissible under applicable law), please keep your proof of purchase in a safe place. For this guarantee to apply, the product you purchased must be new, it will not apply to second hand or display products. Unless stated otherwise by applicable law, any replacement product issued under this guarantee will only be guaranteed until expiry of the original guarantee period.

This guarantee covers product failures and malfunctions provided the product was used for the purpose for which it is intended and subject to installation, cleaning, care and maintenance in accordance with the information contained in these terms and conditions, in the user manual and standard practice, provided that standard practice does not conflict with the user manual.

This guarantee does not cover defects and damage caused by normal wear and tear or damage that could be the result of improper use, faulty installation or assembly, neglect, accident, misuse, or modification of the product. Unless stated otherwise by applicable law, this guarantee will not cover, in any case, ancillary costs (shipping, movement, costs of uninstalling and reinstalling, labour etc), or direct and indirect damage.


This guarantee does not cover defects and damage caused by or resulting from:

- Normal wear and tear
- Overload, misuse or neglect
- Repairs attempted by anyone other than an authorised agent
- Cosmetic damage
- Damage caused by foreign objects, substances or accidents
- Accidental damage or modification
- Failure to follow manufacturer's guidelines
- Loss of use of the goods

If the product is defective, we will, within a reasonable time, repair or replace it. Rights under this guarantee are enforceable in the country in which you purchased this product. Guarantee related queries should be addressed to the store you purchased this product from.

The guarantee is in addition to and does not affect your statutory rights.

EC declaration of conformity

 (EN) EU DECLARATION OF CONFORMITY (FR) DÉCLARATION UE DE CONFORMITÉ (PL) DEKLARACJA ZGODNOŚCI UE (RO) DECLARAȚIA DE CONFORMITATE UE (ES) DECLARACIÓN UE DE CONFORMIDAD (PT) DECLARAÇÃO DE CONFORMIDADE UE
Product/ Produit/ Produkt/Produsul/Producto/Produto
•2100W Chop Saw/TRONÇONNEUSE À MÉTAUX/PRZECINARKA TARCZOWA/ FIERĂSTRĂU CIRCULAR DE BANC/TRONZADORA/CORTADORA PARA METAL •TTB599BNS •Serial number: from 000001 to 999999
Name and address of the manufacturer or his authorised representative: Nom et adresse du fabricant ou de son mandataire: Nazwa i adres producenta lub jego upoważnionego przedstawiciela: Denumirea și adresa producătorului sau a reprezentantului său autorizat: Nombre y dirección del fabricante o de su representante autorizado: Nome e endereço do fabricante ou do respetivo mandatário:
Kingfisher International Products B.V., Rapenburgerstraat 175E, 1011 VM Amsterdam, The Netherlands
This declaration of conformity is issued under the sole responsibility of the manufacturer. La présente déclaration de conformité est établie sous la seule responsabilité du fabricant. Niniejsza deklaracja zgodności wydana zostaje na wyłączną odpowiedzialność producenta. Prezenta declarație de conformitate este emisă pe răspunderea exclusivă a producătorului. La presente declaración de conformidad se expide bajo la exclusiva responsabilidad del fabricante. A presente declaração de conformidade é emitida sob a exclusiva responsabilidade do fabricante.
Object of the declaration/Objet de la déclaration/Przedmiot deklaracji/ Obiectul declarației/Objeto de la declaración/Objeto da declaração

In more detail...

Product/Produit/Produkt/ Produsul/ Producto/ Produto	Model/Modèle/Model/ Modelul/Modelo/ Modelo	EAN
2100W Chop Saw/TRONÇONNEUSE À MÉTAUX/PRZECINARKA TARCZOWA/ FIERĂSTRĂU CIRCULAR DE BANC/ TRONZADORA/CORTADORA PARA METAL	TTB599BNS	3663602797876 5059340131627

The object of the declaration described above is in conformity with the relevant Union harmonisation legislation:

L'objet de la déclaration décrit ci-dessus est conforme à la législation d'harmonisation de l'Union applicable:

Wymieniony powyżej przedmiot niniejszej deklaracji jest zgodny z odpowiednimi wymaganiami unijnego prawodawstwa harmonizacyjnego:

Obiectul declarației descris mai sus este în conformitate cu legislația relevantă de armonizare a Uniunii:

El objeto de la declaración descrita anteriormente es conforme con la legislación de armonización pertinente de la Unión:

O objeto da declaração acima descrito está em conformidade com a legislação de harmonização da União aplicável:

2006/42/EC as amended Machinery Directive

2014/30/EU as amended Directive Electromagnetic compatibility

2011/65/EU as amended Directive Restriction of the use of certain hazardous substances in electrical and electronic equipment

2006/42/CE telle que modifiée Directive sur les machines

2014/30/UE telle que modifiée Directive Compatibilité électromagnétique

2011/65/UE telle que modifiée Directive relative à la limitation de l'utilisation de certaines substances dangereuses dans les équipements électriques et électroniques

2006/42/WE w zmienionej dyrektywie maszynowej

2014/30/UE ze zmianami Dyrektywa Kompatybilność elektromagnetyczna

2011/65/UE ze zmianami Dyrektywa Ograniczenie stosowania niektórych niebezpiecznych substancji w sprzęcie elektrycznym i elektronicznym

2006/42/CE, astfel a fost modificată Directiva privind echipamentele

2014/30/UE, astfel a fost modificată Directiva privind compatibilitatea electromagnetică

2011/65/UE, astfel a fost modificată Directiva privind limitarea utilizării anumitor substanțe periculoase în echipamentele electrice și electronice

Directiva sobre maquinaria modificada 2006/42/CE

2014/30/UE modificada Directiva Compatibilidad electromagnética

2011/65/UE modificada Directiva Restricción del uso de determinadas sustancias peligrosas en equipos eléctricos y electrónicos

2006/42/CE como diretiva de máquinas alteradas

2014/30/UE como alteração da compatibilidade eletromagnética

2011/65/UE como restrição diretiva alterada da utilização de certas substâncias perigosas em equipamentos elétricos e eletrônicos

References to the relevant harmonised standards used or references to the other technical specifications in relation to which conformity is declared:

Références des normes harmonisées pertinentes appliquées, y compris la date de celles-ci, ou des autres caractéristiques techniques, y compris la date de celles-ci, par rapport auxquelles la conformité est déclarée:

Odwolania do odnośnych norm zharmonizowanych, które zastosowano, wraz z datą normy, lub do innych specyfikacji technicznych, wraz z

datą specyfikacji, w odniesieniu do których deklarowana jest zgodność:

Trimiteri la standardele armonizate relevante folosite, inclusiv data standardului, sau trimiteri la celelalte specificații tehnice, inclusiv data specificațiilor, în legătură cu care se declară conformitatea:

Referencias a las normas armonizadas pertinentes utilizadas, incluidas las fechas de las normas, o referencias a las otras especificaciones técnicas, incluidas las fechas de las especificaciones, respecto a las cuales se declara la conformidad:

Referências às normas harmonizadas aplicáveis utilizadas, incluindo a data da norma, ou às outras especificações técnicas, incluindo a data da especificação, em relação às quais é declarada a conformidade:

EN 62841-1:2015

EN 62841-3-10:2015+A11

EN 55014-1:2017+A11

EN 55014-2:2015

EN 61000-3-2:2019

EN 61000-3-11:2019

Signed for and on behalf of / Signé par et au nom de / Podpisano w imieniu / Semnat pentru și în numele / Firmado en nombre de / Assinado por e em nome de:

Kingfisher International Products B.V.,
Rapunburgerstraat 175E,
1011 VM Amsterdam,
The Netherlands



David Awe
Group Quality & Sustainability Director
20/04/2021

In more detail...

EC declaration of conformity



(UK) DECLARATION OF CONFORMITY

Product

- 2100W Chop Saw
- TTB599BNS
- Serial number: from 000001 to 999999

Name and address of the manufacturer or his authorised representative:

Kingfisher International Products Limited
3 Sheldon Square
London W2 6PX
United Kingdom

This declaration of conformity is issued under the sole responsibility of the manufacturer.

Object of the declaration

Product	Model	EAN
2100W Chop Saw	TTB599BNS	5059340131627

The object of the declaration described above is in conformity with the relevant legislation:

Supply of Machinery (Safety) Regulations 2008 as amended
Electromagnetic Compatibility Regulations 2016 as amended
The Restriction of the use of Certain Hazardous Substances in Electrical and Electronic Equipment Regulations 2012 as amended

References to the relevant designated standards used or references to the other technical specifications in relation to which conformity is declared:

BS EN 62841-1: 2015
BS EN 62841-3-10:2015+A11
BS EN 55014-1: 2017+A11
BS EN 55014-2: 2015
BS EN 61000-3-2: 2019
BS EN 61000-3-11: 2019

Signed for and on behalf of:
Kingfisher International Products Limited
3 Sheldon Square
London W2 6PX
United Kingdom

David Awe
Group Quality & Sustainability Director

On 20/04/2021

TITAN

Manufacturer, Fabricant, Producent,
Producător, Fabricante:

UK Manufacturer:
Kingfisher International Products Limited
3 Sheldon Square
London
W2 6PX
United Kingdom

EU Manufacturer:
Kingfisher International Products B.V.
Rapenburgerstraat 175E
1011 VM Amsterdam
The Netherlands



www.diy.com
www.screwfix.com
www.screwfix.ie

To view instruction manuals online,
visit www.kingfisher.com/products
