

## Plumbing Systems and Water Pressure

These taps should be installed in accordance with the current Water Regulations. Any claims that may arise will be dealt with on the basis that isolating valves are fitted.

### Water Pressure

We recommend a minimum water pressure of 1 Bar and a maximum of 3 Bar to ensure efficient operation of your product.

### Cleaning/General Care

To maintain the appearance of this product, ensure that it is regularly cleaned only using a clean, soft damp cloth.

A solution of warm water and a mild liquid detergent may be used where necessary, and then the fitting rinsed thoroughly and wiped dry. Any other cleaning action will invalidate your warranty.

Abrasive cleaners, scouring cleaners and acidic cleaners must not be used under any circumstances.

Avoid contact with all solvents (including chlorinated solvents, ketones, or acetones) as these may result in surface deterioration or etching. Also avoid contact with any harsh household chemicals such as oven cleaners, drain cleaners, rust removers, paint strippers and toilet bowl cleaners.

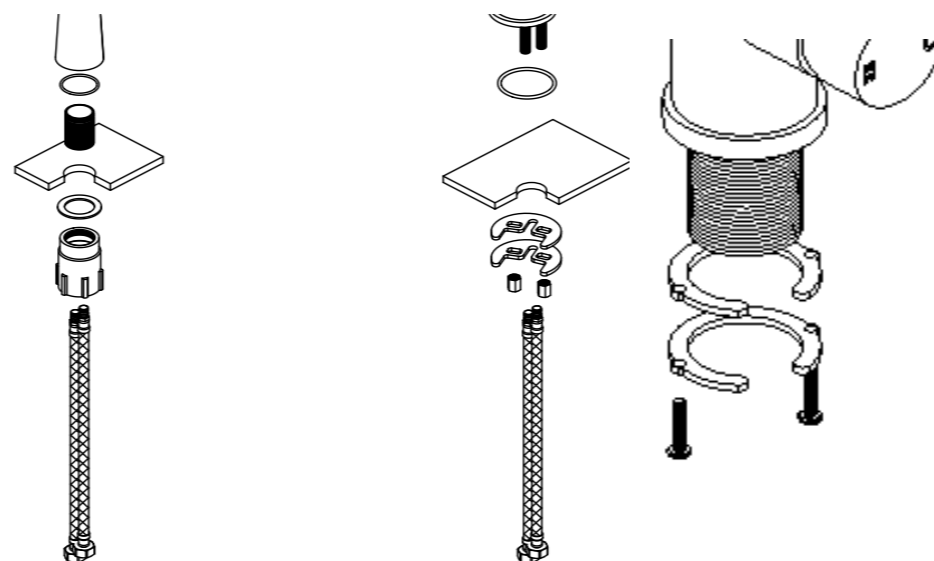
Please keep these instructions for reference.

# Kitchen Mixer Tap Installation and Care Guide

*Follow these instructions before fitting the tap detailed in this guide.*

**Prior to installation, please check that your plumbing system is adequate and that all pipes have been sufficiently flushed through.**

- 1 Turn off the mains cold water supply. The mains stopcock is usually found where the supply enters the building.
- 2 It is also recommended that any hot water heating systems are turned off.
- 3 Drain the hot and cold-water systems. To ensure complete drainage, open all taps.
- 4 Position the tap over the hole, ensuring the rubber seal is positioned properly between the tap body and the sink. Or in the case that the product includes a base plate ensuring the rubber seal is between the base plate and the sink.



5. **Horse Shoe Fixing Kit** - Using the fixing nut(s) supplied, screw the short threaded bar(s) into the hole(s) on the underneath of the body. Next, screw the flexi tails in to each of the other holes (ensure these are screwed in firmly). Please make sure the threaded bar(s) are fully through sink hole. Place the rubber bracket gasket over the threaded bar(s) along with the brass bracket and locking nut(s) and tighten up. **DO NOT OVER TIGHTEN.**
6. **C-Nut with Securing Screws Fixing Kit** - Ensure rubber washer is in place. Tighten the C-Nut. Secure the tap by tightening the screws with a screwdriver. **DO NOT OVERTIGHTEN**
7. **Fixing Nut and Threaded Tail Fixing Kit**- Please fix the threaded tail to the bottom of the tap body and pass it through the fixing hole on the worktop. Then fix the fixing nut underneath the worktop and tighten it. **DO NOT OVERTIGHTEN**
8. Tip: In order to help firm tightening of the tap to the worktop, position the tap around 90° anticlockwise from the normal position when tightening the black fixing nut by hand. Grasp the tap and turn clockwise until it sits straight in a normal position.
9. Connection to the water supply is usually achieved using flexible tap connectors. PLEASE NOTE: To comply with water regulations, isolating valves should be fitted in the pipe work beneath the tap. This enables each supply to be independently isolated which makes it easier to service and /or remove the tap. Once all the connections are made, the mains water supply can be turned back on and the system refilled.
10. Now check for any leaks. At this stage it is recommended that the whole system be flushed to remove any foreign matter, also check the seating is free from swarf, as this will interfere with the water seal between the valve and the seating. All water heating systems may now be turned on.