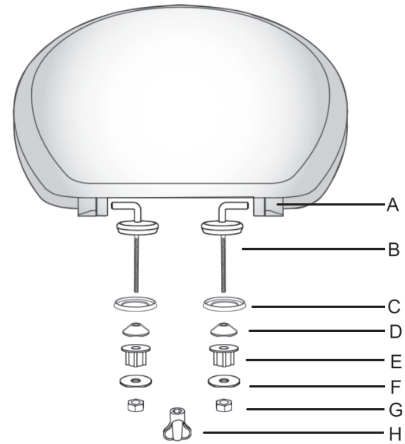


# Assembly Instructions

## Duroplast toilet standard hinge

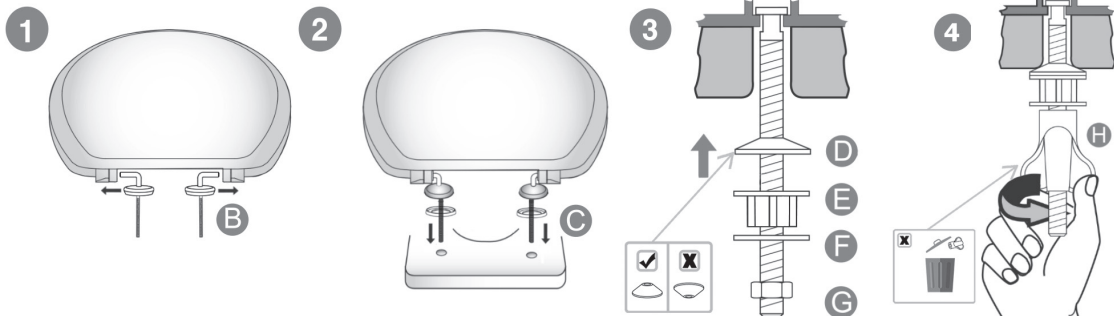
### Parts Supplied

ITEM	DESCRIPTION	QTY
A	toilet seat cover	1
B	hinge	2
C	round gasket	2
D	conical gasket	2
E	no teeth nut	2
F	round washer	2
G	nut	2
H	spanner	1



### Assembly

1. Align both holes of the seat and cover near the hinge area, plug the hinges B into those align holes as per illustration 1.
2. Put the round gasket C under the hinges B, then turning the hinges around to matching 2 holes on the ceramic, and plug in.
3. Install parts D, E, F and G on the screws in turn as per illustration 3.
4. Use spanner H tighten the nut G until the fixture is secure.



### After Care

- Clean all surfaces using water and mild soap. Dry with a soft cloth.  
Never use rough sponges, abrasives or chemical cleaners.
- Never use any solvents, scourers, abrasives, bleach, acids, strong detergents, aggressive chemical cleaners or solvent-type cleaning solutions on the product.

SFX Ltd BA22 8RT, UK

UK Manufacturer: Kingfisher International Products Limited, 1 Paddington Square,  
LONDON, W2 1GG, United Kingdom [www.screwfix.com](http://www.screwfix.com)

EU Manufacturer: Kingfisher International Products B.V., Rapenburgerstraat 175E, 1011 VM  
Amsterdam, The Netherlands [www.screwfix.ie](http://www.screwfix.ie)