

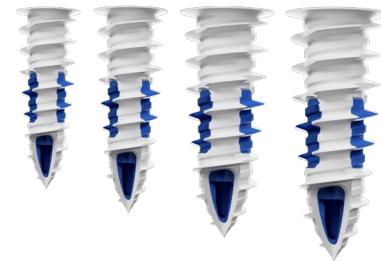


**SPECIFICATIONS, LISTINGS AND APPROVALS**

**Body Material:** Reinforced Nylon and Acetal  
**Screws Materials:** Carbon Steel AISI-1018 with Zinc plating ASTM B633 Type III  
**Available Sizes:** #6 (3,5mm), #8 (4mm), #10 (5mm) and #12 (6mm)



#6 3,5mm #8 4mm #10 5mm #12 6mm

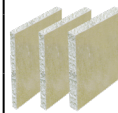


**KEY FEATURES & BENEFITS**

- ▶ Bi-material technology
- ▶ Fast and easy to install
- ▶ No pre-drilling, the only tool required is a screwdriver
- ▶ Designed to install smoothly and easily through drywall
- ▶ Expands and grips tightly behind the wall
- ▶ Higher weight loads
- ▶ Anti-vibration
- ▶ Suitable for ceiling application

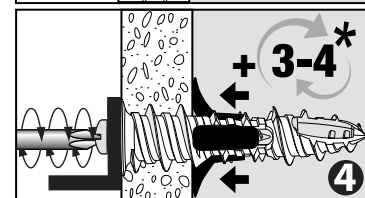
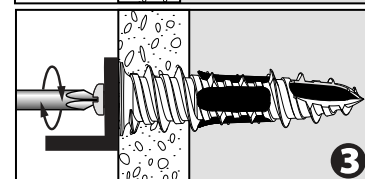
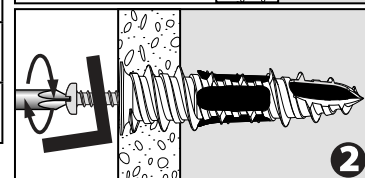
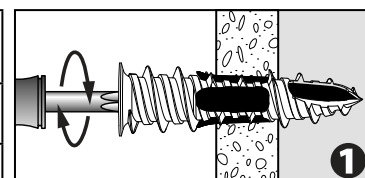
**MATERIALS**

DRYWALL THICKNESS	ANCHOR SIZES	
	3/8" (10mm)	#6 (3,5mm) et #8 (4mm)
1/2" (13mm)	#6 (3,5mm), #8 (4mm), #10 (5mm) et #12 (6mm)	
5/8" (16mm)	#10 (5mm) et #12 (6mm)	



ANCHOR PARAMETERS *		TOOL TYPE	SAFE WORKING LOADS 2:1					
			DRYWALL 3/8" (10 mm)		DRYWALL 1/2" (13 mm)		DRYWALL 5/8" (16 mm)	
ANCHOR SIZE	SCREW SIZE	PHILLIPS DRIVER	TENSION	SHEAR	TENSION	SHEAR	TENSION	SHEAR
#6 (3,5mm)	#6 x 1-1/2" (3,5mm x 38mm)	#2	35 lb (16 kg)	93 lb (42 kg)	40 lb (18 kg)	105 lb (48 kg)	—	—
#8 (4mm)	#8 x 1-1/2" (4mm x 38mm)	#2	38 lb (17 kg)	100 lb (45 kg)	43 lb (19 kg)	115 lb (52 kg)	—	—
#10 (5mm)	#10 x 1-3/4" (5mm x 44mm)	#3	—	—	50 lb (23 kg)	118 lb (54 kg)	60 lb (27 kg)	175 lb (79 kg)
#12 (6mm)	#12 x 2" (6mm x 50mm)	#4	—	—	55 lb (25 kg)	130 lb (59 kg)	65 lb (29 kg)	205 lb (93 kg)

WALLDRILLER PLUS® MEASUREMENTS	SIZE	ANCHOR DIAMETER	ANCHOR LENGTH	MAX. FIXTURE THICKNESS	SCREW DIAMETER	SCREW LENGTH
	#6 (3,5 mm)	0.570" (14 mm)	1.620" (41 mm)	1/4" (6 mm)	0.138" (3.5 mm)	1-1/2" (38 mm)
	#8 (4 mm)	0.630" (16 mm)	1.720" (44 mm)	5/16" (8 mm)	0.165" (4 mm)	1-1/2" (38 mm)
	#10 (5 mm)	0.690" (18 mm)	2.000" (50 mm)	3/8" (10 mm)	0.199" (5 mm)	1-3/4" (44 mm)
	#12 (6 mm)	0.765" (19 mm)	2.110" (54 mm)	1/2" (13 mm)	0.218" (6 mm)	2" (50 mm)



**INSTALLATION INSTRUCTIONS**

- Using a screwdriver, push the tip of the WallDriller Plus® into the drywall in a screwing motion.
- Turn clockwise until flush with surface and firmly in place.
- Insert the screw through the object you need to affix and turn clockwise until the head of the screw is flush with the object surface.
- IMPORTANT: To activate expansion of the legs, continue tightening 3 to 4 complete turns.**

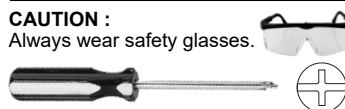
**NOTES:**

- Loads may vary according to the drywall quality.
- Safe working loads are average tested loads for items flush to wall and will vary with items hung away from the wall.
- Safe working loads are calculated using a safety factor of 2.

**DO NOT USE FOR MOUNTING TELEVISIONS.**



**TOOLS REQUIRED**



**CAUTION :**  
Always wear safety glasses.

\* For a complete list of the different packaging formats available please visit our website [cobraanchors.com](http://cobraanchors.com)