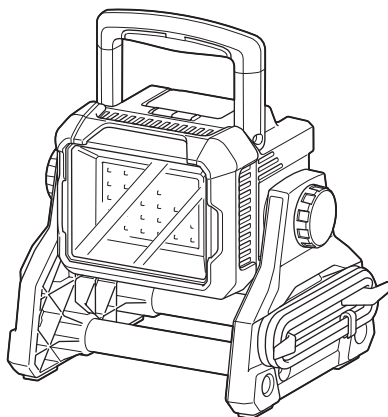


INSTRUCTION MANUAL



Cordless Worklight

DML811



SPECIFICATIONS

Model:	DML811
LED	30pcs, 31.5W
Power source	14.4V / 18V DC
Dimensions (L x W x H)	249mm × 302mm × 271mm
Net weight	4.1 kg
Pressure receiving area (Lens area)	0.0164 m ²

- Specifications may differ from country to country.
- The dimensions are with the handle lowered position.
- The weight does not include battery cartridge and power cord.
- Due to our continuing program of research and development, the specifications herein are subject to change without notice.

Power supply

The appliance should be connected only to a power supply of the same voltage as indicated on the nameplate, and can only be operated on single-phase AC supply. The appliance is double-insulated and can, therefore, also be used from sockets without earth wire.

Applicable battery cartridge and operating time

Voltage	Applicable battery cartridge	Operating time (Approximately)		
		High	Mid	Low
14.4V	BL1415N	0.6 hours	1.3 hours	2.4 hours
	BL1430, BL1430B	1.2 hours	2.5 hours	4.5 hours
	BL1440	1.6 hours	3.5 hours	6.0 hours
	BL1450	1.8 hours	4.0 hours	7.0 hours
	BL1460B	2.1 hours	4.5 hours	8.5 hours
18V	BL1815N	0.7 hours	1.8 hours	3.5 hours
	BL1820, BL1820B	1.1 hours	2.4 hours	4.5 hours
	BL1830, BL1830B	1.5 hours	3.0 hours	6.5 hours
	BL1840, BL1840B	2.1 hours	4.5 hours	9.0 hours
	BL1850, BL1850B	2.7 hours	5.5 hours	11 hours
	BL1860B	3.0 hours	7.0 hours	13 hours

- Some of the battery cartridges listed above may not be available depending on your region of residence.
- Operating times may differ depending on battery type, charging status, and usage condition.

⚠WARNING: Only use the battery cartridges listed above. Use of any other battery cartridges may cause injury and/or fire.

Symbols

The following show the symbols used for the equipment. Be sure that you understand their meaning before use.



- Read instruction manual



- Indoor use only for AC supply; indoor and outdoor use for DC supply



- Only for EU countries Due to the presence of hazardous components in the equipment, waste electrical and electronic equipment, accumulators and batteries may have a negative impact on the environment and human health. Do not dispose of electrical and electronic appliances or batteries with household waste! In accordance with the European Directive on waste electrical and electronic equipment and on accumulators and batteries and waste accumulators and batteries, as well as their adaptation to national law, waste electrical equipment, batteries and accumulators should be stored separately and delivered to a separate collection point for municipal waste, operating in accordance with the regulations on environmental protection. This is indicated by the symbol of the crossed-out wheeled bin placed on the equipment.



- DOUBLE INSULATION



- Optical Radiation (UV and IR). Minimize exposure to eyes or skin.



- Do not stare at operating lamp.



- Use appropriate shielding or eyes protection.



- Take particular care and attention!



- Do not use the appliance in the rain or snow when using with AC power.

- IP • IP65 for DC supply; IP20 for AC supply

Remark

- This product contains a light source of energy efficiency class<E>

SAFETY WARNING IMPORTANT SAFETY INSTRUCTIONS

⚠WARNING: When using appliances, basic safety precautions should always be followed to reduce the risk of fire, electric shock, and personal injury, including the following:

READ ALL INSTRUCTIONS.

1. When the appliance is not in use, always switch off, and unplug / remove the battery cartridge from the appliance.
2. Do not cover the appliance in operation with cloth or carton, etc. Otherwise it may cause a flame.
3. When using the appliance with AC power, do not use the appliance in damp or wet locations.
4. Do not expose the appliance to rain or snow. Never wash it in water.
5. Do not use the appliance in explosive atmospheres, such as in the presence of flammable liquids, gases or dust.
6. Appliance plugs must match the outlet. Never modify the plugs in any way. Do not use any adapter plugs with earthed (grounded) appliances. Unmodified plugs and matching outlet will reduce risk of electric shock.
7. When operating the appliance, avoid body contact with earthed or grounded surfaces such as pipes, radiators, microwave ovens, or refrigerators. There is an increased risk of electric shock if your body is earthed or grounded.
8. Do not abuse the cord. Never use the cord for carrying, pulling or unplugging the appliance. Keep cord away from heat, oil, sharp edges or moving parts. Damaged or entangled cords increase the risk of electric shock.
9. If the external flexible cable or cord of this luminaire is damaged, it shall be replaced by a special cord or cord exclusively available from the manufacturer or his service agent.
10. Do not stare at the source of light directly.
11. Do not handle the plug with wet or greasy hand.
12. Always place the appliance on a level and stable surface to prevent the appliance from falling.
13. The light source contained in this luminaire shall only be replaced by the manufacture or his service agent or a similar qualified person.
14. Do not leave the power cord disconnected from the appliance while the power is supplied from an outlet. Doing so might cause an electric shock.
15. Do not allow anything to cover or clog the vents of the appliance. Always keep clean the vent for cooling.

Battery appliance use and care

1. Prevent unintentional starting. Ensure the switch is in the off-position before connecting to battery pack, picking up or carrying the appliance. Carrying the appliance with your finger on the switch or energizing appliance that have the switch on invites accidents.
2. Disconnect the battery pack from the appliance before making any adjustments, changing accessories, or storing appliance. Such preventive safety measures reduce the risk of starting the appliance accidentally.
3. Recharge only with the charger specified by the manufacturer. A charger that is suitable for one type of battery pack may create a risk of fire when used with another battery pack.
4. Use appliances only with specifically designated battery packs. Use of any other battery packs may create a risk of injury and fire.

5. When battery pack is not in use, keep it away from other metal objects, like paper clips, coins, keys, nails, screws or other small metal objects, that can make a connection from one terminal to another. Shorting the battery terminals together may cause burns or a fire.
6. Under abusive conditions, liquid may be ejected from the battery; avoid contact. If contact accidentally occurs, flush with water. If liquid contacts eyes, additionally seek medical help. Liquid ejected from the battery may cause irritation or burns.
7. Do not use a battery pack or appliance that is damaged or modified. Damaged or modified batteries may exhibit unpredictable behavior resulting in fire, explosion or risk of injury.
8. Do not expose a battery pack or appliance to fire or excessive temperature. Exposure to fire or temperature above 130 °C may cause explosion.
9. Follow all charging instructions and do not charge the battery pack or appliance outside of the temperature range specified in the instructions. Charging improperly or at temperatures outside of the specified range may damage the battery and increase the risk of fire.
10. Have servicing performed by a qualified repair person using only identical replacement parts. This will ensure that the safety of the product is maintained.
11. Do not modify or attempt to repair the appliance or the battery pack except as indicated in the instructions for use and care.

Important safety instructions for battery cartridge

1. Before using battery cartridge, read all instructions and cautionary markings on (1) battery charger, (2) battery, and (3) product using battery.
2. Do not disassemble battery cartridge.
3. If operating time has become excessively shorter, stop operating immediately. It may result in a risk of overheating, possible burns and even an explosion.
4. If electrolyte gets into your eyes, rinse them out with clear water and seek medical attention right away. It may result in loss of your eyesight.
5. Do not short the battery cartridge:
 - (1) Do not touch the terminals with any conductive material.
 - (2) Avoid storing battery cartridge in a container with other metal objects such as nails, coins, etc.
 - (3) Do not expose battery cartridge to water or rain. A battery short can cause a large current flow, overheating, possible burns and even a breakdown.
6. Do not store the appliance and battery cartridge in locations where the temperature may reach or exceed 50°C (122°F).
7. Do not incinerate the battery cartridge even if it is severely damaged or is completely worn out. The battery cartridge can explode in a fire.
8. Be careful not to drop or strike battery.
9. Do not use a damaged battery.
10. The contained lithium-ion batteries are subject to the Dangerous Goods Legislation requirements. For commercial transports e.g. by third parties, forwarding agents, special requirement on packaging

and labeling must be observed. For preparation of the item being shipped, consulting an expert for hazardous material is required. Please also observe possibly more detailed national regulations. Tape or mask off open contacts and pack up the battery in such a manner that it cannot move around in the packaging.

11. When disposing the battery cartridge, remove it from the tool and dispose of it in a safe place. Follow your local regulations relating to disposal of battery.
12. Use the batteries only with the products specified by Makita. Installing the batteries to non-compliant products may result in a fire, excessive heat, explosion, or leak of electrolyte.
13. If the tool is not used for a long period of time, the battery must be removed from the tool.

Tips for maintaining maximum battery life

1. Charge the battery cartridge before completely discharged.
Always stop appliance operation and charge the battery cartridge when you notice less appliance power.
2. Never recharge a fully charged battery cartridge.
Overcharging shortens the battery service life.
3. Charge the battery cartridge with room temperature at 10°C - 40°C (50°F - 104°F). Let a hot battery cartridge cool down before charging it.
4. Charge the battery cartridge if you do not use it for a long period (more than six months).

Save all warnings and instructions for future reference.

FUNCTIONAL DESCRIPTION

⚠CAUTION:

- Always be sure that the appliance is switched off, unplugged, and the battery cartridge is removed before adjusting or checking function on the appliance.

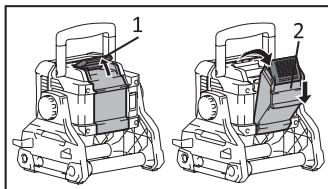
Use with battery:

Installing or removing battery cartridge

⚠CAUTION:

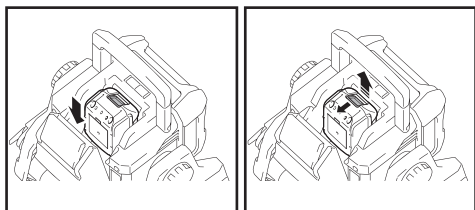
- Always unplug before installing or removing of the battery cartridge.
- Only use genuine Makita lithium-ion batteries. Use of non-genuine Makita batteries, or batteries that have been altered, may result in the battery bursting causing fires, personal injury and damage. It will also void the Makita warranty for the Makita tool and charger.
- **Hold the appliance and the battery cartridge firmly when installing or removing battery cartridge.** Failure to hold the appliance and the battery cartridge firmly may cause them to slip off your hands and result in damage to the appliance and battery cartridge and a personal injury.
- Be careful not to trap finger(s) between the appliance and battery cartridge when loading battery cartridge as well as between the appliance and the battery cover when closing the battery cover.

To install the battery cartridge, release the cover lock, and open the battery cover.



1. Cover lock
2. Battery cover

Insert the battery cartridge. Align the tongue on the battery cartridge with the groove in the housing and slip it into place. Insert it all the way until it locks in place with a little click. If you can see the red indicator on the upper side of the button, it is not locked completely. Then close the battery cover.



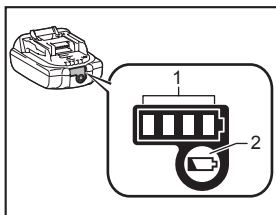
To remove the battery cartridge, slide it from the tool while sliding the button on the front of the cartridge.

CAUTION:

- Always install the battery cartridge fully in place. If not, it may accidentally fall out of the appliance, causing injury to you or someone around you.
- Do not install the battery cartridge forcibly. If the cartridge does not slide in easily, it is not being inserted correctly.

Indicating the remaining battery capacity

(Only for battery cartridges with the indicator)



1. Indicator lamps
2. Check button

Press the check button on the battery cartridge to indicate the remaining battery capacity. The indicator lamps light up for few seconds.

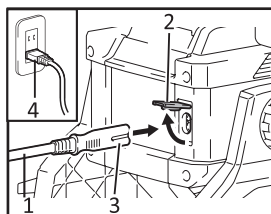
Indicator lamps			Remaining capacity
Lighted	Off	Blinking	
■	□	▧	75% to 100%
■ ■ ■ ■			50% to 75%
■ ■ □ □			25% to 50%
■ □ □ □			0% to 25%
▧ □ □ □			Charge the battery.
■ ■ □ □	↑	↓	The battery may have malfunctioned.

NOTE:

- Depending on the conditions of use and the ambient temperature, the indication may differ slightly from the actual capacity.

Use of non-genuine Makita batteries, or batteries that have been altered, will void the Makita warranty for the Makita appliance and charger.

Use with AC power:



1. Power cord
2. Socket cover
3. Female plug (for the appliance)
4. Male plug (for AC source, the shape varies from country to country)

When using the appliance with AC power, use the power cord which is supplied with the appliance. Let the female plug insert to the appliance and connect the male plug to an outlet.

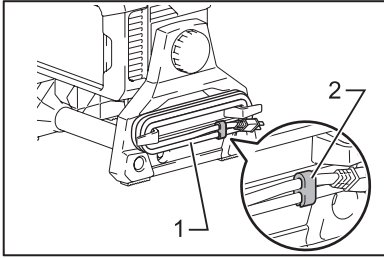
CAUTION:

- Insert the female plug into the appliance first completely, then connect the male plug to an outlet.
- Always close the socket cover firmly when the power cord is not plugged.

NOTE: The AC power does not charge the battery inserted to the appliance.

NOTE: Even operating in DC power, the appliance automatically changes to AC power when the power cord is plugged in.

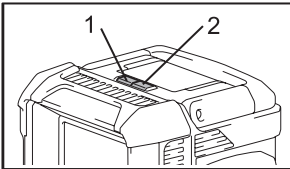
Organizing the power cord:



1. Power cord
2. Fastener

Coil power cord on stand tightly, then clip end of the cord by using fastener attached.

Turning on the light and brightness mode selection

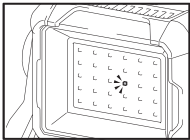


1. Switch
2. Brightness mode selection

1. Switch : Press the switch once, the light turns on (At the same brightness mode as the last setting). Press the switch again, the light turns off.

2. Brightness mode selection: Brightness sequence is : High mode / Mid mode / Low mode / High mode for each press when the light is on.

Battery protection system



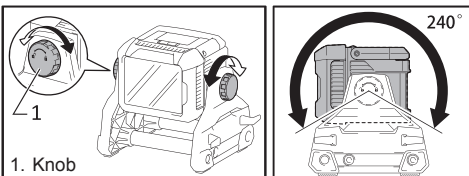
The appliance is equipped with a battery protection system to extend battery life. When the battery becomes low, the LED lights go out except one LED as illustrated. Then approximately five to ten minutes later, the system automatically cuts off power.

OPERATION

⚠CAUTION:

- Always put the appliance on flat and stable place. Otherwise a falling accident may occur.

Adjusting the angle of the light



1. Knob

Loosen the knobs on the both side. Adjust the angle of the light (adjustment range is 240°). Then tighten the knobs again.

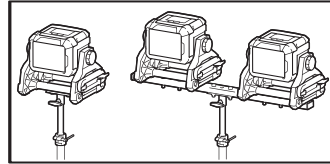
⚠CAUTION:

Take care not to trap finger(s) when adjusting the angle of the light.

Using with tripod (optional accessories)

⚠CAUTION:

- Read carefully the instruction manuals of the accessories before using them with the light.



You can put the light on the tripod to facilitate the operation.

⚠CAUTION:

- Be careful not to drop the appliance when attaching the appliance on the tripod.
- Place the tripod on a level and stable surface to prevent from falling.
- Spread the legs of the tripod to the maximum.
- Do not use the tripod if the wind is strong.
- Make sure that the appliance is attached securely on the tripod.
- Remove the appliance when carrying the tripod or when folding the legs of the tripod.
- Be careful not to get your hand caught in the legs of the **tripod** when closing the tripod.

MAINTENANCE

⚠CAUTION:

- Always be sure that the appliance is switched off, unplugged, and the battery cartridge is removed before attempting to perform inspection or maintenance.
 - Never use gasoline, benzine, thinner, alcohol or the like. Discoloration, deformation or cracks may result.
- Only maintenance work described in this instruction manual may be performed by the user. Any other work must be carried out by Makita authorized service centers.

Cleaning

⚠CAUTION:

- Never wash the appliance in water.
- From time to time wipe off the outside (appliance body) of the appliance using a cloth dampened in soapy water.

OPTIONAL ACCESSORIES

CAUTION:

- These accessories or attachments are recommended for use with your Makita appliance specified in this manual. The use of any other accessories or attachments might present a risk of injury to persons. Only use accessory or attachment for its stated purpose.

If you need any assistance for more details regarding these accessories, ask your local Makita service center.

- Makita genuine battery and charger
- Tripod [Part No:GM00002073]

NOTE:

- Some items in the list may be included in the appliance package as standard accessories. They may differ from country to country.

Makita Europe N.V. Jan-Baptist Vinkstraat 2,
3070 Kortenberg, Belgium

Makita Corporation 3-11-8, Sumiyoshi-cho,
Anjo, Aichi 446-8502 Japan