



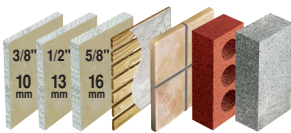
SPECIFICATIONS, LISTINGS AND APPROVALS

Body Material: Plastic
Screw Material: Carbon Steel AISI-1018 with Zinc plating ASTM B633 Type III
Available Sizes: Imperial #6 - #8 - #10 - #12
 Metric 3,5 mm - 4 mm - 5mm - 6 mm

KEY FEATURES & BENEFITS

- ▶ Easy to install
- ▶ Superior holding power
- ▶ 2 expandable wings that grips tight behind drywall
- ▶ 2 lateral wings holds the anchor in place preventing any rotation
- ▶ Its advanced cam action technology expands; thereby creating an additional pressure against the side walls

MATERIALS



INSTALLATION INSTRUCTIONS

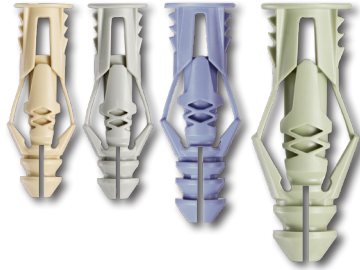
1. Drill the appropriate hole into drywall /wallboard, brick or concrete.
2. Insert the TripleGrip® into the hole.
3. Insert the screw through the object you need to afix and screw into the TripleGrip®.
4. Turn clockwise until a firm resistance.

CAUTION : ALWAYS WEAR SAFETY GLASSES.

<p>#6 (3.5 mm)</p> <p>1-1/4" (32 mm)</p>	<p>1-3/16" (29.5 mm)</p> <p>1/4" (6 mm)</p>
<p>#8 (4 mm)</p> <p>1-1/4" (32 mm)</p>	<p>1-3/16" (29.5 mm)</p> <p>1/4" (6 mm)</p>
<p>#10 (5 mm)</p> <p>1-1/2" (38 mm)</p>	<p>1-1/4" (32 mm)</p> <p>5/16" (8 mm)</p>
<p>#12 (6 mm)</p> <p>1-3/4" (44 mm)</p>	<p>1-1/2" (39 mm)</p> <p>3/8" (10 mm)</p>

North America – Imperial

#6 #8 #10 #12

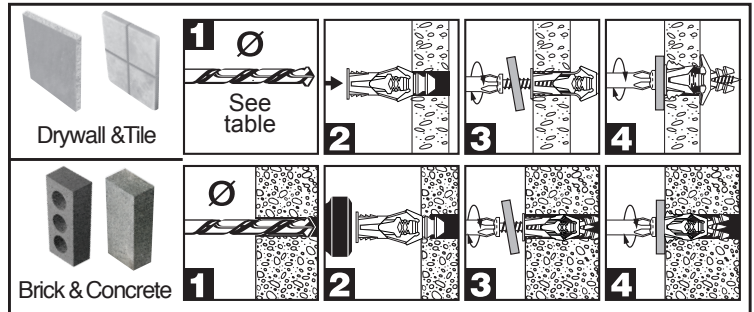
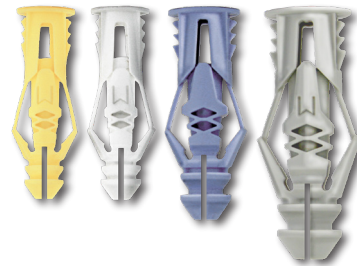


**Combined
Head**
Phillips & slot



Europe – metric

3.5mm 4mm 5mm 6mm



TOOLS REQUIRED





ANCHORS PARAMETERS

IMPERIAL FORMAT — SAFE WORKING LOADS**										
ANCHORS PARAMETERS*			DRYWALL 3/8" 2:1		DRYWALL 1/2" 2:1		DRYWALL 5/8" 2:1		CONCRETE 3000 Psi 4:1	
ANCHOR SIZE	SCREW SIZE	DRILL SIZE	TENSION lb	SHEAR lb	TENSION lb	SHEAR lb	TENSION lb	SHEAR lb	TENSION lb	SHEAR lb
# 6 beige	# 6 X 1-1/4"	1/4"	16 lb	26 lb	18 lb	29 lb	30 lb	46 lb	60 lb	100 lb
# 8 grey	# 8 X 1-1/4"	1/4"	18 lb	30 lb	21 lb	35 lb	32 lb	51 lb	69 lb	125 lb
# 10 blue	# 10 X 1-1/2"	5/16"	23 lb	38 lb	29 lb	46 lb	44 lb	77 lb	100 lb	200 lb
# 12 green	# 12 X 1-3/4"	3/8"	30 lb	45 lb	37 lb	61 lb	66 lb	102 lb	125 lb	225 lb

METRIC FORMAT — SAFE WORKING LOADS**										
ANCHORS PARAMETERS*			DRYWALL 10 mm 2:1		DRYWALL 13 mm 2:1		DRYWALL 16 mm 2:1		CONCRETE 21 MPa 4:1	
ANCHOR SIZE	SCREW SIZE	DRILL SIZE	TENSION lb	SHEAR lb	TENSION lb	SHEAR lb	TENSION lb	SHEAR lb	TENSION lb	SHEAR lb
3,5 mm yellow	3,5 X 32 mm	6 mm	7 kg	12 kg	8 kg	13 kg	14 kg	21 kg	27 kg	45 kg
4 mm white	4 X 32 mm	6 mm	8 kg	14 kg	10 kg	16 kg	15 kg	23 kg	31 kg	56 kg
5 mm blue	5 X 38 mm	8 mm	10 kg	17 kg	13 kg	21 kg	20 kg	35 kg	45 kg	90 kg
6 mm grey	6 X 39 mm	10 mm	14 kg	20 kg	17 kg	27 kg	30 kg	46 kg	56 kg	102 kg

* For a complete list of the different packaging formats available please visit our website cobraanchors.com

** Loads may vary according to the quality of the drywall or concrete.

