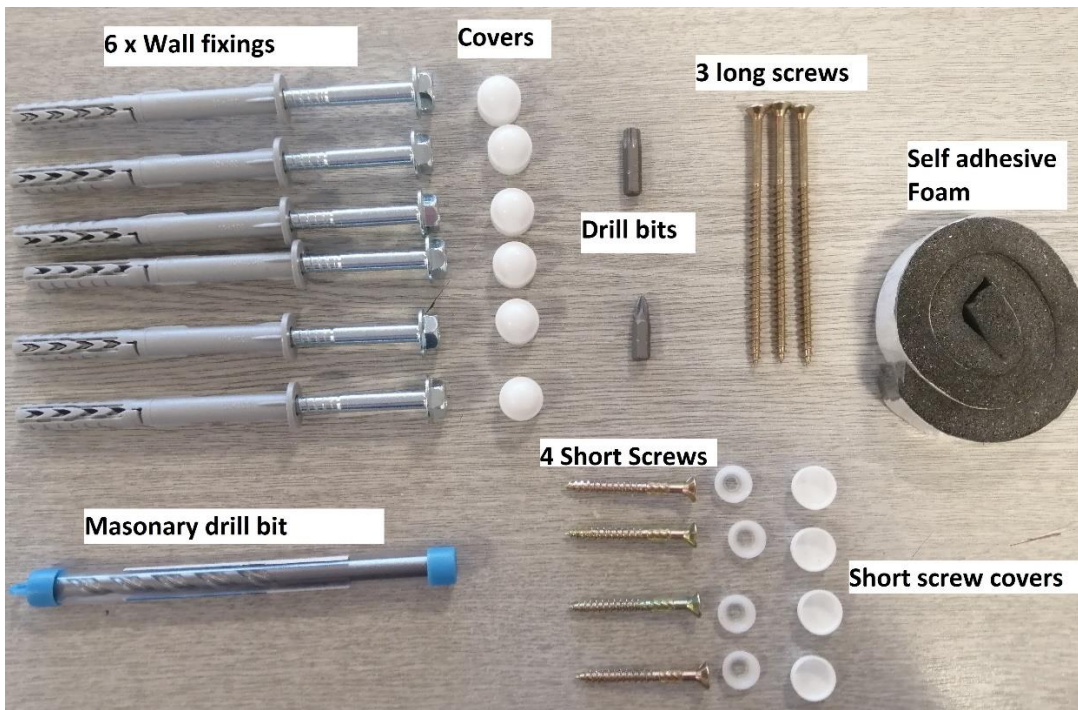
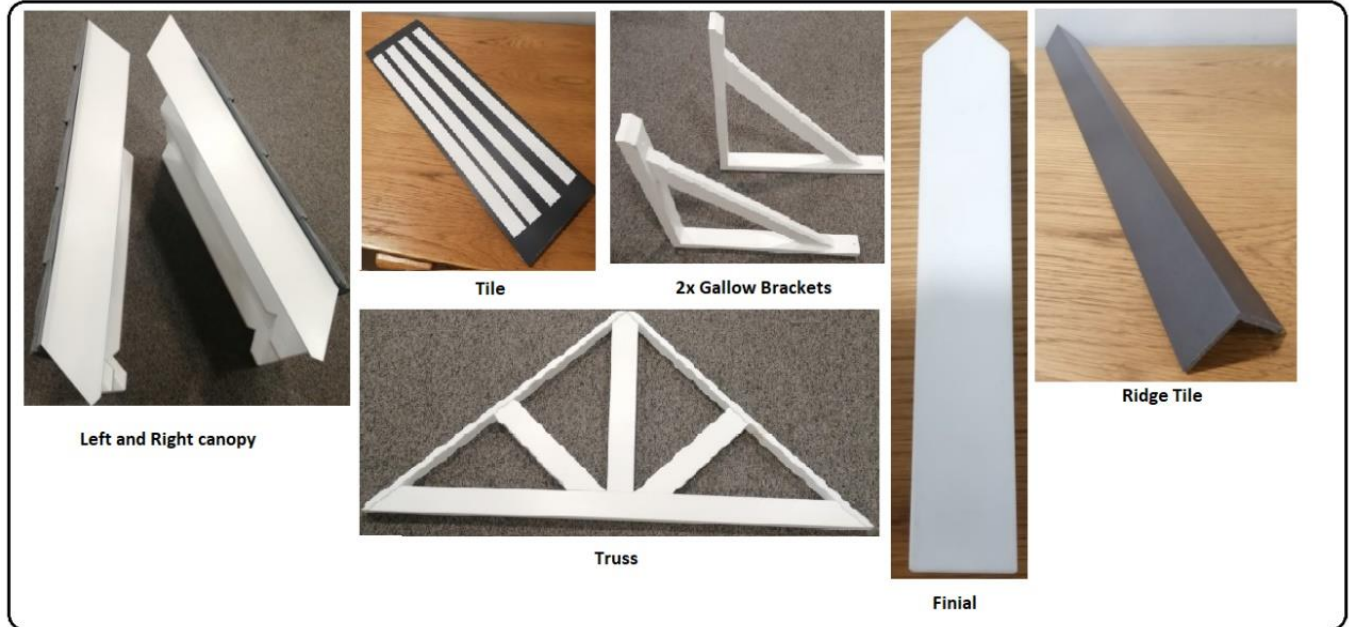


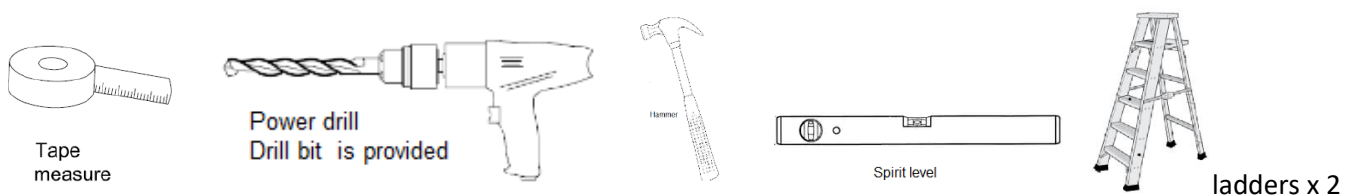


Easy Fit Deluxe Door Canopy.

Components:

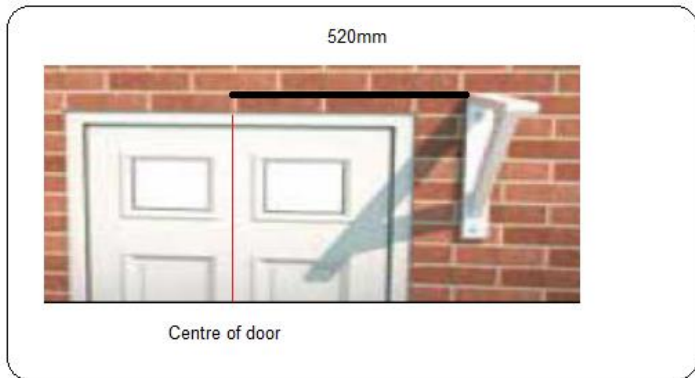


Equipment required:



Notes to customers:

- For ease and speed of assembly we recommend that before you commence each step of the assembly that you identify all the parts required to complete that step.
- We recommend that where possible you allow sufficient space to assemble the item as close as possible to the place where it will be once assembled.
- For the protection of your canopy, we recommend that the product is placed on protected surfaces during assembly to prevent any damage.
- This is a **TWO** person build please take appropriate precautions when handling this product.
- Please ensure you retain all the product packaging until the item is assembled and you are happy. We can only accept the return of this product if it is in the original packaging.



Step One:

To centre the porch over your door,

Using a spirit level place, the bracket against the wall 520mm from the centre of the door.

Mark the position of the bracket through the location holes in the bracket including the top and bottom and one of the sides of the bracket to make sure it remains square after the location holes are drilled.



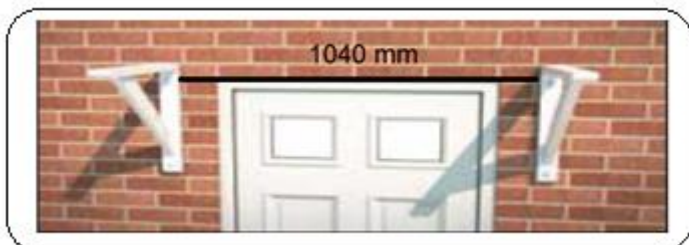
Step Two:

Drill the location holes 50mm deep using the drill provided.



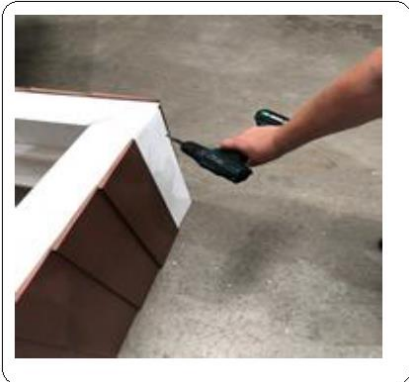
Step Three:

Relocate the bracket to the marks and push through the wall plug and screw, a gentle tap with a hammer might be required and tighten.



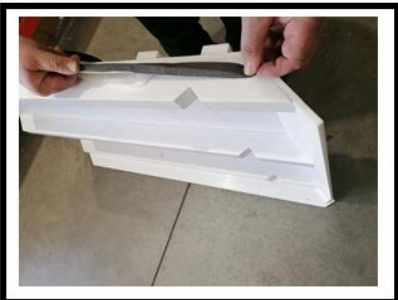
Step Four:

To add the second bracket, follow steps 1-3 except instead of measuring 520mm from the door centre measure 1040mm from the edge of the first bracket.



Step Five

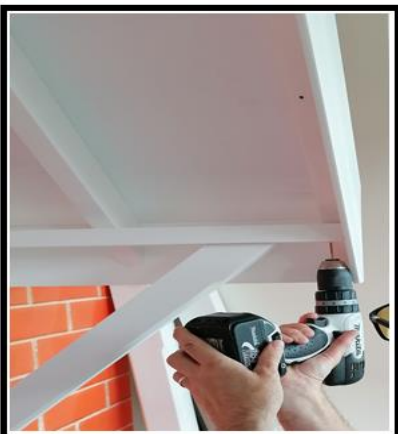
At floor level, line the left and right pitch roof component together and tighten together using the three long screws.



Step six

Unroll the self-adhesive foam and place down the middle of the of the canopy that goes nearest to the wall, (the tiles will be flat to the white truss on the wall side)

Lift the joined roof upright and fix into place the self-adhesive roof tile and ridge tile Formed into the Pitch roof components are bird mouth notches when placed on the brackets this will complete the join and pitch roof will be secure.



Step Seven:

To add the front panel, locate into place and fix into place through the location hole in the bracket.



Step Eight:

Make sure when drilling you are going into a brick and not a mortar line

Drill through the fascia board into the wall behind, tap in the wall plugs and then place and tighten the screws



Step Nine

Place the finial on to the roof and ridge tiles as shown and secure into place with a long screw through the back of the front panel and into the finial.

**For further advise, customer care or request for spare parts
please contact our customer service department on 01562
753040**