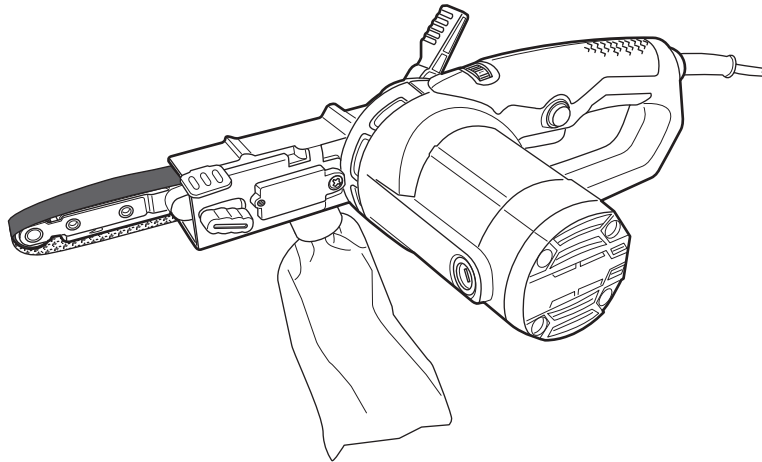


TITAN

400W Precision File Belt Sander



TTB910SDR
EAN:5059340252926

WARNING: Read the instructions before using the product!



Let's get started...

These instructions are for your safety. Please read through them thoroughly before use and retain them for future reference.



Getting **started...** 02

Safety information	03
Your product	11
Before you start	13



In more **detail...** 20

Product functions	21
Operation	23
Care and maintenance	25
Trouble shooting	29
Recycling and disposal	29
Guarantee	30
Declarations of conformity	31

Safety warnings

General power tool safety warnings



WARNING! Read all safety warnings, instructions, illustrations and specifications provided with this power tool. Failure to follow all instructions listed below may result in electric shock, fire and/or serious injury. **Save all warnings and instructions for future reference.**

The term "power tool" in the warnings refers to your mains-operated (corded) power tool or battery-operated (cordless) power tool.

1) Work area safety

- a) **Keep work area clean and well lit.** Cluttered or dark areas invite accidents.
- b) **Do not operate power tools in explosive atmospheres, such as in the presence of flammable liquids, gases or dust.** Power tools create sparks which may ignite the dust or fumes.
- c) **Keep children and bystanders away while operating a power tool.** Distractions can cause you to lose control.

2) Electrical safety

- a) **Power tool plugs must match the outlet. Never modify the plug in any way.** Do not use any adapter plugs with earthed (grounded) power tools. Unmodified plugs and matching outlets will reduce risk of electric shock.
- b) **Avoid body contact with earthed or grounded surfaces, such as pipes, radiators, ranges and refrigerators.** There is an increased risk of electric shock if your body is earthed or grounded.

- c) **Do not expose power tools to rain or wet conditions.** Water entering a power tool will increase the risk of electric shock.
- d) **Do not abuse the cord. Never use the cord for carrying, pulling or unplugging the power tool. Keep cord away from heat, oil, sharp edges or moving parts.** Damaged or entangled cords increase the risk of electric shock.
- e) **When operating a power tool outdoors, use an extension cord suitable for outdoor use.** Use of a cord suitable for outdoor use reduces the risk of electric shock.
- f) **If operating a power tool in a damp location is unavoidable, use a residual current device (RCD) protected supply.** Use of an RCD reduces the risk of electric shock.

3) Personal safety

- a) **Stay alert, watch what you are doing and use common sense when operating a power tool. Do not use a power tool while you are tired or under the influence of drugs, alcohol or medication.** A moment of inattention while operating power tools may result in serious personal injury.
- b) **Use personal protective equipment. Always wear eye protection.** Protective equipment such as a dust mask, non-skid safety shoes, hard hat or hearing protection used for appropriate conditions will reduce personal injuries.
- c) **Prevent unintentional starting. Ensure the switch is in the off-position before connecting to power source and/or battery pack, picking up or carrying the tool.** Carrying power tools with your finger on the switch or energising power tools that have the switch

on invites accidents.

- d) **Remove any adjusting key or wrench before turning the power tool on.** A wrench or a key left attached to a rotating part of the power tool may result in personal injury.
- e) **Do not overreach. Keep proper footing and balance at all times.** This enables better control of the power tool in unexpected situations.
- f) **Dress properly. Do not wear loose clothing or jewellery. Keep your hair and clothing away from moving parts.** Loose clothes, jewellery or long hair can be caught in moving parts.
- g) **If devices are provided for the connection of dust extraction and collection facilities, ensure these are connected and properly used.** Use of dust collection can reduce dust-related hazards.
- h) **Do not let familiarity gained from frequent use of tools allow you to become complacent and ignore tool safety principles.** A careless action can cause severe injury within a fraction of a second.

4) Power tool use and care

- a) **Do not force the power tool. Use the correct power tool for your application.** The correct power tool will do the job better and safer at the rate for which it was designed.
- b) **Do not use the power tool if the switch does not turn it on and off.** Any power tool that cannot be controlled with the switch is dangerous and must be repaired.
- c) **Disconnect the plug from the power source and/or remove the battery pack, if detachable, from the power tool before making any adjustments, changing accessories, or storing power tools.** Such preventive safety measures reduce the risk of starting the power tool accidentally.

Safety warnings

- d) **Store idle power tools out of the reach of children and do not allow persons unfamiliar with the power tool or these instructions to operate the power tool.** Power tools are dangerous in the hands of untrained users.
 - e) **Maintain power tools and accessories. Check for misalignment or binding of moving parts, breakage of parts and any other condition that may affect the power tool's operation. If damaged, have the power tool repaired before use.** Many accidents are caused by poorly maintained power tools.
 - f) **Keep cutting tools sharp and clean.** Properly maintained cutting tools with sharp cutting edges are less likely to bind and are easier to control.
 - g) **Use the power tool, accessories and tool bits etc. in accordance with these instructions, taking into account the working conditions and the work to be performed.** Use of the power tool for operations different from those intended could result in a hazardous situation.
 - h) **Keep handles and grasping surfaces dry, clean and free from oil and grease.** Slippery handles and grasping surfaces do not allow for safe handling and control of the tool in unexpected situations.
- 5) Service**
- a) **Have your power tool serviced by a qualified repair person using only identical replacement parts.** This will ensure that the safety of the power tool is maintained.

Belt sander and drum sander safety warnings
Hold the power tool by insulated gripping surfaces, because the sanding surface may contact its own cord. Cutting a "live" wire may make exposed metal parts of the power tool "live" and could give the operator an electric shock.



WARNING! Contact with or inhalation of harmful / toxic dusts arising from sanding lead-based painted surfaces, woods and metals can endanger the health of operator and bystanders!

- > Take special care to guard against these dusts, including the following:
 - All persons entering the work area must wear an appropriate dust mask specially designed for protection against harmful / toxic dusts, in addition to using the dust extraction facility, and keeping work area well ventilated.
 - Children and pregnant women must not enter the work area.
 - Do not eat, drink or smoke in the work area.
 - Any pre 1960 building may have paint containing lead on wood or metal surfaces. If you suspect workpiece contains lead seek professional advice.
- > Some wood and wood type products especially MDF (Medium Density Fibreboard) can produce dust that can be hazardous to your health. We recommend the use of a dust mask with replaceable filters when using this product in addition to using the dust extraction facility.

Vibration and noise reduction

To reduce the impact of noise and vibration emission, limit the time of operation, use low-vibration and

Safety warnings

low-noise operating modes as well as wear personal protective equipment.

Take the following points into account to minimise the vibration and noise exposure risks:

- > Only use the product as intended by its design and these instructions.
- > Ensure that the product is in good condition and well maintained.
- > Use correct attachments for the product and ensure they are in good condition.
- > Keep tight grip on the handles/grip surface.
- > Maintain this product in accordance with these instructions and keep it well lubricated (where appropriate).
- > Plan your work schedule to spread any high vibration tool use across a longer period of time.

Emergency

Familiarise yourself with the use of this product by means of this instruction manual. Memorise the safety directions and follow them to the letter. This will help to prevent risks and hazards.

- > Always be alert when using this product, so that you can recognise and handle risks early. Fast intervention can prevent serious injury and damage to property.
- > Switch off and disconnect from the power supply if there are malfunctions. Have the product checked by a qualified professional and repaired, if necessary, before you operate it again.

Residual risks

Even if you are operating this product in accordance with all the safety requirements, potential risks of

injury and damage remain. The following dangers can arise in connection with the structure and design of this product:

- >Health defects resulting from vibration emission if the product is being used over long periods of time or not adequately managed and properly maintained.
- >Injuries and damage to property due to broken attachments or the sudden impact of hidden objects during use.
- >Danger of injury and property damage caused by flying objects.



WARNING! This product produces an electromagnetic field during operation! This field may under some circumstances interfere with active or passive medical implants! To reduce the risk of serious or fatal injury, we recommend persons with medical implants to consult their doctor and the medical implant manufacturer before operating this product!

The following information applies to professional users only but is good practice for all users:

ADDITIONAL SAFETY WARNING FOR CONSTRUCTION DUST

- >The updated Control of Substances Hazardous to Health Regulations 1st October 2012 now also targets to reduce the risks associated with silica, wood and gypsum dusts.
- >Construction workers are one of the at-risk groups within this because of the dust that they breathe: silica dust is not just a nuisance; it is a real risk to your lungs!

Safety warnings

- > Silica is a natural mineral present in large amounts in things like sand, sandstone and granite. It is also commonly found in many construction materials such as concrete and mortar. The silica is broken into very fine dust (also known as Respirable Crystalline Silica or RCS) during many common tasks such as cutting, drilling and grinding. Breathing in very fine particles of crystalline silica can lead to the development of:
 - > Lung cancer
 - Silicosis
 - Chronic Obstructive Pulmonary Disorder (Chronic obstructive pulmonary disease (COPD))And breathing in fine particles of wood dust can lead to the development of Asthma. The risk of lung disease is linked to people who regularly breathe construction dust over a period of time, not on the odd occasion.
 - > To protect the lung, the COSHH Regulations sets a limit on the amount of these dusts that you can breathe (called a Workplace Exposure Limit or WEL) when averaged over a normal working day. These limits are not a large amount of dust: when compared to a penny it is tiny – like a small pinch of salt: This limit is the legal maximum; the most you can breathe after the right controls have been used.
- How to reduce the amount of dust?
1. Reduce the amount of cutting by using the best sizes of building products.
 2. Use a less powerful tool e.g. a block cutter instead of angle grinder.
 3. Using a different method of work altogether – e.g. using a nail gun to direct fasten cable trays instead of drilling holes first.

Please always work with approved safety equipment, such as those dust masks that specially designed to filter out microscopic particles and use the dust extraction facility at all time.

For more information please see the HSE website:

<http://www.hse.gov.uk/construction> or

<http://www.hse.gov.uk/pubns/cis69.pdf>

⚠ Warning: Some dust particles created by power sanding, sawing, grinding, drill and other construction jobs contain chemicals known to cause cancer, birth defects or other reproductive harm. Some examples of these chemicals are:

- Lead from lead-based paints.
 - Crystalline silica from bricks and cement and other masonry products.
 - Arsenic and chromium from chemically treated timber.
- Your risk from these exposures varies, depending upon how often you do this type of work. To reduce your exposure to these chemicals:
- Work in a well-ventilated area.
 - Work with approved safety equipment, such as those dust masks that are specially designed to filter microscopic particles.

VIBRATION

The European Physical Agents (Vibration) Directive has been brought in to help reduce hand arm vibration syndrome injuries to power tool users. The directive requires power tool manufacturers and suppliers to provide indicative vibration test results to enable users to make informed decisions as to the period of time a power tool can be used safely on a daily basis and the choice of tool.

Safety warnings

The declared vibration emission value should be used as a minimum level and should be used with the current guidance on vibration.

Calculating the actual period of the actual period off use can be difficult and the HSE website has further information.

The declared vibration emission been measured in accordance with a standardised test stated above and may be used to compare one tool with another tool.

The declared vibration emission value may also be used in a preliminary assessment of exposure.

⚠ Warning: The vibration emission value during actual use of the power tool can differ from the declared value depending on the ways in which the tool is used dependant on the following examples and other variations on how the tool is used:

How the tool is used and the materials being cut or drilled.

The tool being in good condition and well maintained.

The use the correct accessory for the tool and ensuring it is sharp and in good condition.

The tightness of the grip on the handles.

And the tool is being used as intended by its design and these instructions.

While working with this power tool, hand/arm vibrations occur. Adopt the correct working practices in order to reduce the exposure to vibration. This tool may cause hand-arm vibration syndrome if its use is not adequately managed.

⚠ Warning: Identify safety measures to protect the operator that are based on an estimation of exposure in the actual conditions of use (taking account of all parts of the operating cycle such as the times when the tool is switched off and when it is running idle in addition to the trigger time). Note The use of other tools will reduce the users' total working period on this tool.

Helping to minimise your vibration exposure risk. ALWAYS use sharp chisels, drills and blades.

Maintain this tool in accordance with these instructions and keep well lubricated (where appropriate).

Avoid using tools in temperatures of 10°C or less. Plan your work schedule to spread any high vibration tool use across a number of days.

Health surveillance

All employees should be part of an employer's health surveillance scheme to help identify any vibration related diseases at an early stage, prevent disease progression and help employees stay in work.

Symbols

On the product, the rating label and within these instructions you will find among others the following symbols and abbreviations. Familiarize yourself with them to reduce hazards like personal injuries and damage to property.

V~	Volt, (alternating voltage)	mm	Millimetre
Hz	Hertz	kg	Kilogram
W	Watt	dB(A)	Decibel (A-rated)
/min or min ⁻¹	Per minute	m/s ²	Metres per seconds squared



Lock / to tighten or secure.



Unlock / to loosen.



Note / Remark.



Caution / Warning.



Read the instruction manual.



Wear hearing protection.



Wear eye protection.



Wear a dust mask.



Wear protective gloves.



Wear protective, slip-resistant footwear.

yyWxx

Manufacturing date code; year of manufacturing (20yy) and week of manufacturing (Wxx)



Switch the product off and disconnect it from the power supply before assembly, cleaning, adjustments, maintenance, storage and transportation.



This product is of protection class II. That means it is equipped with enhanced or double insulation.



The product complies with the applicable European directives and an evaluation method of conformity for these directives was done.

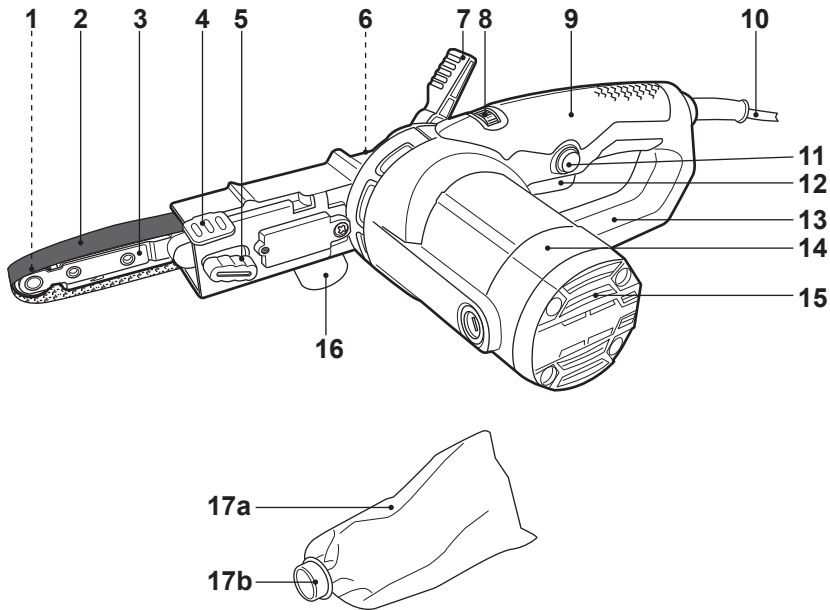


UK Conformity Assessed.



WEEE symbol. Waste electrical products should not be disposed of with household waste. Please recycle where facilities exist. Check with your Local Authority or local store for recycling advice.

Your product



- | | |
|-----------------------------|----------------------------|
| 1. Front roller | 10. Power cord with plug |
| 2. Sanding belt | 11. Lock-on button |
| 3. Sanding arm | 12. On/off switch |
| a. Spring* | 13. Rear hand guard |
| b. Holder* | 14. Motor housing |
| c. Support* | 15. Air vents |
| d. Pin* | 16. Dust extraction outlet |
| 4. Clamp lever | 17. Dust bag assembly |
| 5. Tracking adjustment knob | a. Dust bag |
| 6. Drive roller | b. Connector |
| 7. Locking lever | c. Frame* |
| 8. Speed dial | d. Zipper* |
| 9. Handle | |




NOTE: Parts marked with * are not shown in this overview. Please refer to the respective section in the instruction manual.

Getting started...

Technical specification

General

- > **Rated voltage, frequency** : 230 – 240 V~, 50 Hz
- > **Rated power input** : 400 W
- > **Rated no load speed n_0** : 300 - 1700 m/min
- > **Protection class** : II 
- > **Weight** : approx. 2.0 kg
- > **Sanding belt dimensions** : approx. 9 x 457 mm
approx. 13 x 457 mm

Sound values

- > **Sound pressure level L_{pA}** : 79.7 dB(A)
- > **Sound power level L_{WA}** : 90.7 dB(A)
- > **Uncertainty K_{pA} , K_{WA}** : 3 dB(A)

Hand arm vibration values

- > **Hand arm vibration a_h** : 3.467 m/s²
- > **Uncertainty K** : 1.5 m/s²

The sound values have been determined according to noise test code given in EN 62841-1 and EN 62841-2-4, using the basic standards EN ISO 3744 and EN ISO 11203.

The sound intensity level for the operator may exceed 80 dB(A) and ear protection measures are necessary.

The declared vibration value has been measured in accordance with a standard test method (according to EN 62841-2-4) and may be used for comparing one product with another. The declared vibration value may also be used in a preliminary assessment of exposure.



WARNING! Depending on the actual use of the product the vibration values can differ from the declared total. Adopt proper measures to protect yourself against vibration exposures. Take the whole work process including times the product is running under no load or switched off into consideration.

Proper measures include among others regular maintenance and care of the product and accessories, keeping hands warm, periodical breaks and proper planning of work processes.

RATING LABEL EXPLANATION

TTB910SDR = MODEL NUMBER

TT - Titan

B - 220-240 V~

910 - Sequential code

SDR - Sander

Unpacking

- > Unpack all parts and lay them on a flat, stable surface
- > Remove all packing materials and shipping devices, if applicable.
- > Make sure the delivery contents are complete and free of any damage. If you find that parts are missing or show damage do not use the product but contact your dealer. Using an incomplete or damaged product represents a hazard to people and property.
- > Ensure that you have all the accessories and tools needed for assembly and operation. This also includes suitable personal protective equipment.



WARNING! The product and the packaging are not children's toys! Children must not play with plastic bags, sheets and small parts! There is a danger of choking and suffocation!

You will need

(items not supplied)

Suitable personal protective equipment

(items supplied)

Sanding arm (3)
Spring (3a)
Tracking adjustment knob (5)
Dust bag assembly (17)
Sanding belt (13 x 457 mm,
60# x 3, 80# x 3, 120# x 3) (2)

Setup



WARNING! The product must be fully assembled before operation! Do not use a product that is only partly assembled or assembled with damaged parts!



Follow the assembly instructions step-by-step and use the pictures provided as a visual guide to easily assemble the product!
Do not connect the product to power supply before it is completely assembled!

Sanding arm assembly

- > Place the spring (3a) in the holder (3b) and keep it in position.
- > Align the pin (3d) with the spring and attach the sanding arm (3) onto the support (3c).
- > Secure the connection by tightening the tracking adjustment knob (5) (Fig. 1).

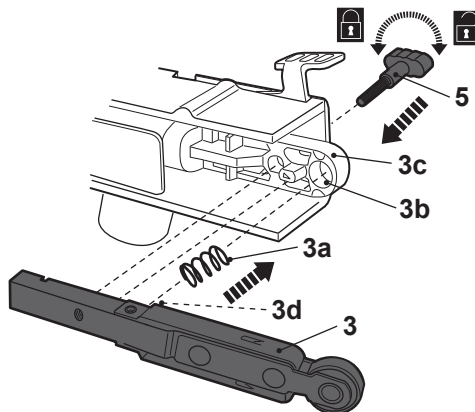


Fig. 1

Sanding belt

Choosing the right sanding belt

Sanding belts are available with different grain sizes (grit). The grain size is indicated with a number on the reverse of the sanding belt, the higher the number the finer the grain size

coarse	< P100	removal of paint and varnish, preparation of rough surfaces
fine	> P180	finishing, cleaning plaster and water stain from wood

- > Only use suitable sanding belts in terms of application and size.
- > Replace worn or damaged sanding belts immediately.
- > Start with a coarse sanding belt and finish with a fine-grained one to achieve a satisfactory result.
- > Do not use the same sanding belt on different materials, e. g. do not use the sanding belt that has been used for sanding metal to sand wood. Small metal particles remaining in the sanding belt will lead to scratches.

Attaching

- > Pull the clamp lever (4) backward all the way out (Fig. 2, step 1).

- > Pay attention to the rotational direction indicated on the inside of the sanding belt (2). Align the sanding belt (2) in accordance with the direction indicated on the product housing and slide it over the front roller (1) and the drive roller (6) (Fig. 2, step 2).
- > Press the clamp lever (4) back in. Slightly pull on the sanding belt (2) to test if it sits properly in place (Fig. 3).

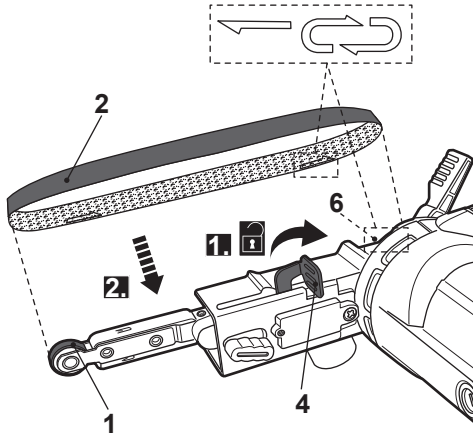


Fig. 2

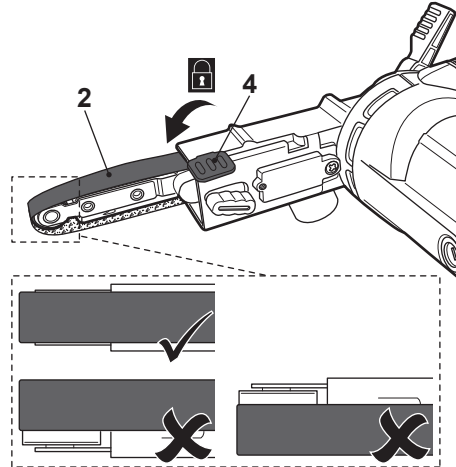


Fig. 3

Belt position

- > Make sure the on/off switch (12) is in its off position. Then connect the plug with a suitable socket.
- > Hold the product securely and press the on/off switch (12) then release it. The sanding belt rotates for a short period to check the correct position.



NOTE: Refer to "Product functions / Operation" for more information about operating this product!

- > Whilst the sanding belt is running, adjust the tracking adjustment knob (5) to align the sanding belt to the centre of the rollers (1, 6).
- > Turn the tracking adjustment knob (5) clockwise to adjust the sanding belt (2) to the right (Fig. 4).
- > Turn the tracking adjustment knob (5) anticlockwise to adjust the sanding belt (2) to the left (Fig. 5).

Sanding belt

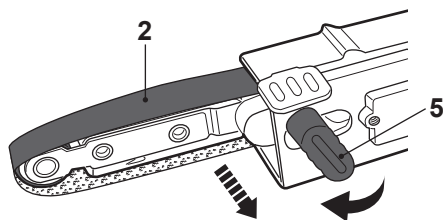


Fig. 4

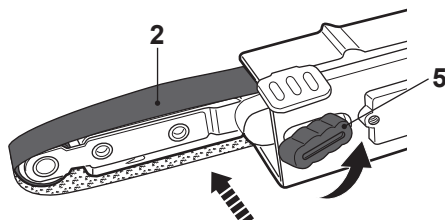


Fig. 5

- > Disconnect the product from the power supply before performing further assembly and adjustment.

Removing/Replacing

- > Pull the clamp lever (4) backward all the way out and remove the sanding belt (2) (Fig. 6).
- > Attach a new sanding belt (2) as required.

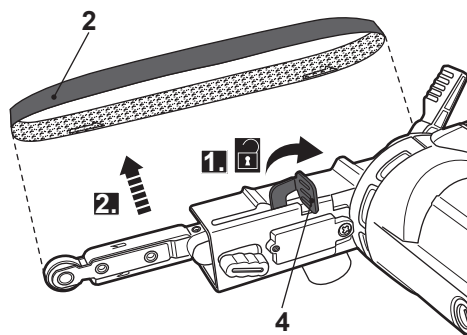


Fig. 6

Dust extraction



WARNING! Attach the dust bag or a dust extraction device when using this product to sand wood in order to keep the working area clean! Wear a dust mask when operating this product! Dust can be harmful to health! Especially dust and chips of wood that has been treated, e.g. with a wood preservative or stain!



WARNING! Do not use the dust bag when sanding metal! The hot metal particles could cause residual wood dust or the bag itself to catch fire

Dust bag assembly

Attaching/Removing

- > Check and re-fit the dust bag (17a) to the connector (17b) if necessary (Fig. 7).
- > Make sure the dust bag (17a) is properly assembled onto the connector (17b)/frame (17c) (Fig. 8).

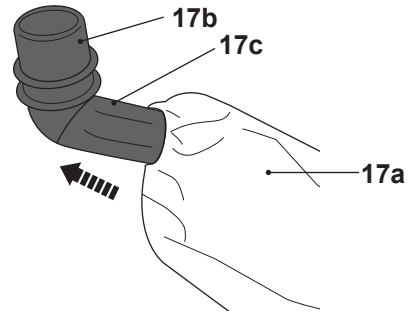


Fig. 7

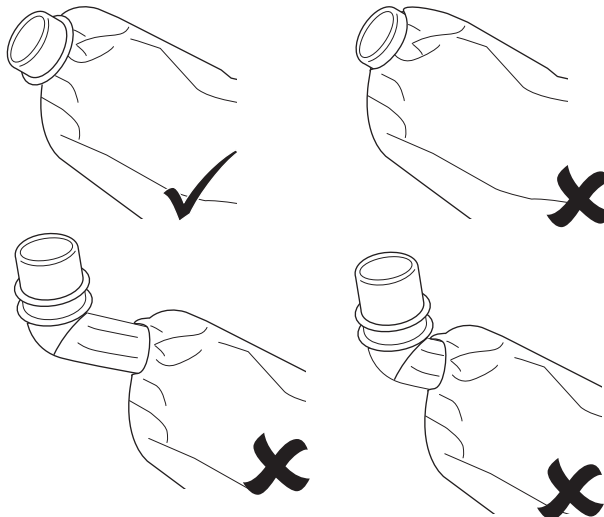


Fig. 8

- > Align the dust bag connector (17b) with the dust extraction outlet (16).
- > Attach the dust bag assembly (17) onto the outlet (16) all the way to the stop (Fig. 9).
- > Hold and pull the dust bag connector (17b) to remove the dust bag assembly (17) (Fig. 10).

Dust extraction

Getting started...

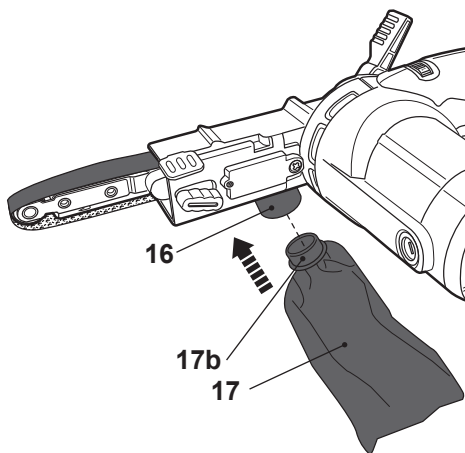


Fig. 9

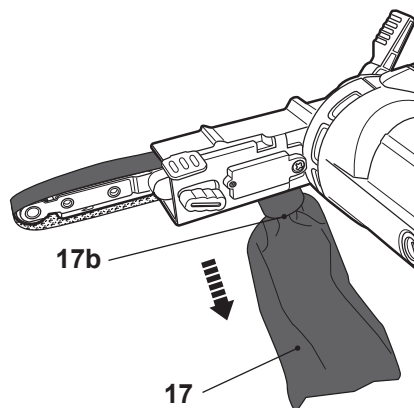


Fig. 10

Emptying

> Open the zipper (17d) and empty chippings into a suitable rubbish bag (Fig. 11).

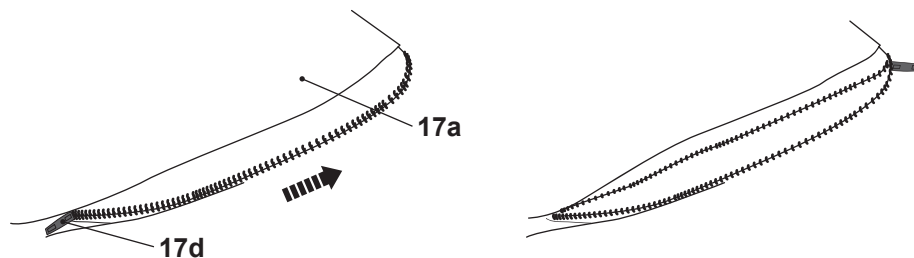


Fig. 11



NOTE: Empty the dust bag when it is half full. An overfilled dust bag lowers the performance of the product.
Do not remove the dust bag from the connector/frame when emptying the dust bag.

> Close the zipper (17d) and re-attach the dust bag assembly (17) to the product.

Dust extraction

Alternatively a dust extraction system or suitable vacuum cleaner can be connected to the dust extraction outlet (16) for a cleaner and safer work area (Fig. 12).

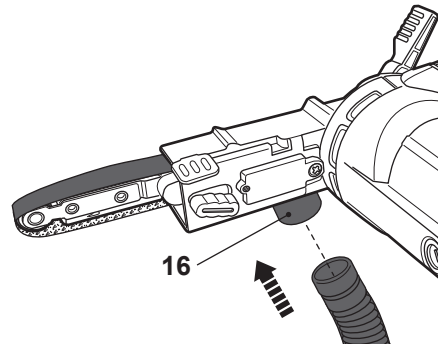


Fig. 12

Connection to power supply

- > Make sure the on/off switch (12) is in its off position.
- > Connect the plug with a suitable socket.



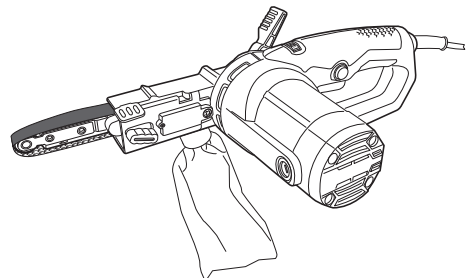
WARNING! Check the voltage! The voltage must comply with the information on the rating label!

- > Your product is now ready to be used.

In more detail...



Product functions	20
Operation	22
Care and maintenance	24
Trouble shooting	28
Recycling and disposal	28
Guarantee	29
Declarations of conformity	30



Intended use

This product is intended for sanding the following materials: wood, plastic, metal, fillers as well as varnished surfaces. This product should not be used on other materials or those harmful to health. It is to be used for dry operation only without water or other cooling liquids.

For safety reasons it is essential to read the entire instruction manual before first operation and to observe all the instructions therein.

Speed dial



WARNING! Always switch the product off and disconnect it from power supply before making any adjustments!

- > Limit the maximum speed using the speed dial (8).
- > Turn the speed dial (8) left (as seen from the operator's position) to increase the maximum speed (Fig. 13). A higher setting is suitable for sanding with fine grained sanding belts to achieve a fine finish.
- > Turn the speed dial (8) right (as seen from the operator's position) to decrease the maximum speed (Fig. 14). A lower setting is suitable for sanding with coarse-grained sanding belts to remove paints and varnishes.

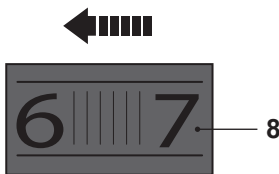


Fig. 13

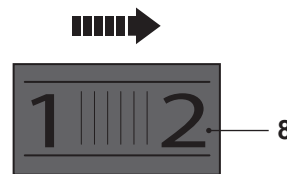


Fig. 14

In more detail...

Sanding arm adjustment



WARNING! Always switch the product off and disconnect it from power supply before making any adjustments!



Always ensure the sanding arm is properly secured by the locking lever after adjustment. Never use the product if the locking lever is not tightened!

Adjust the angle of the sanding arm (3) to the desired position to fit intended operation.

- > Pull the locking lever (7) forward (Fig. 15, step 1).
- > Move the sanding arm (3) downward to the required position (Fig. 15, step 2).
- > Press the locking lever (7) back in with slight pressure (Fig. 15, step 3). Do not overtighten.

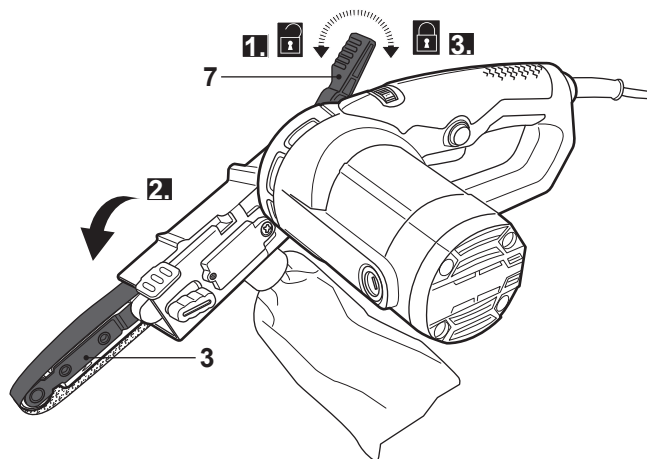


Fig. 15



WARNING! Only use the product with the sanding arm adjusted to the position within the range as indicated in Fig. 16.

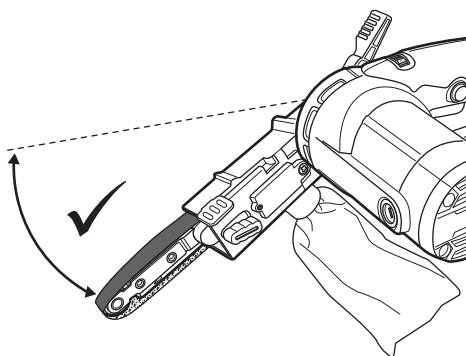


Fig. 16

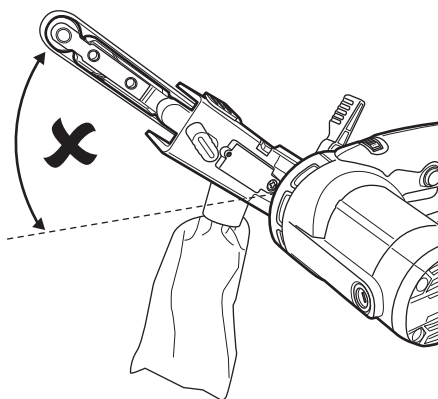


Fig. 17

Switching on/off

Operate the product either in instant or continuous mode.

Instant mode

- > Switch the product on by squeezing the on/off switch (12) (Fig. 18).
- > Switch the product off by releasing the on/off switch (12).

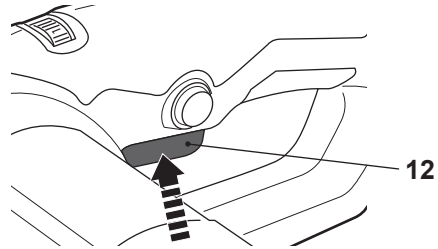


Fig. 18

Continuous mode

- > Switch the product on by squeezing the on/off switch (12) and hold it in position (Fig. 19, step 1).
- > Press the lock-on button (11) and hold it in position to lock the on/off switch (12) (Fig. 19, step 2).
- > Release the lock-on button (11) and on/off switch (12). The on/off switch is now locked on for continuous use.
- > Depress and release the on/off switch (12) to switch the product off.

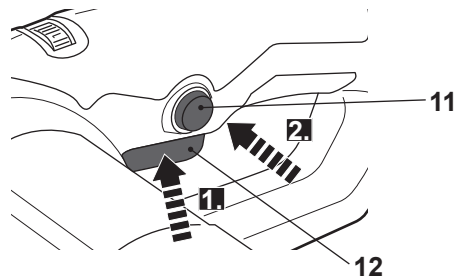


Fig. 19

General operation

- > Check the product, its power cord and plug as well as accessories for damage before each use. Do not use the product if it is damaged or shows wear.
- > Double check that the accessories and attachments are properly fixed
- > Always hold the product on its handle/motor housing. Keep the handle/motor housing dry to ensure safe support.
- > Ensure that the air vents are always unobstructed and clear. Clean them if necessary with a soft brush. Blocked air vents may lead to overheating and damage the product.
- > Switch the product off immediately if you are disturbed while working by other people entering the working area. Always let the product come to complete stop before putting it down.

General operation

- > Do not overwork yourself. Take regular breaks to ensure you can concentrate on the work and have full control over the product.
- > Ensure the workpiece is free of obstacles like nails or screws before operation. Remove them if required. Where possible, secure smaller workpieces to prevent them from moving under the product.
- > Secure the workpiece properly, e. g. with a clamping device or a vice.

Sanding



WARNING! During operation fine dust will be generated

Some dusts are highly inflammable and explosive! Do not smoke during operation, keep heat sources and open flames out of the working area! Always use a dust extraction system and wear a dust mask to protect yourself against hazards resulting from fine dust



- > Ensure the workpiece is free of obstacles like nails or screws before operation. Remove them if required. Where possible, secure smaller workpieces to prevent them from moving under the product.
- > Hold the product with the left hand on the motor housing (14) and the right hand on the handle (9) (Fig. 20).

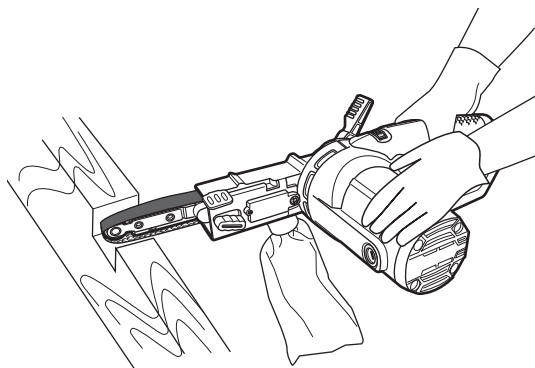


Fig. 20

- > Switch the product on and wait until it runs at full speed before placing it on the workpiece.
- > Move the product slowly over the surface of the workpiece sand with the grain, in parallel overlapping strokes.



WARNING! Always use the front part ("A" range) of the sanding belt to sand the workpiece (Fig. 21).

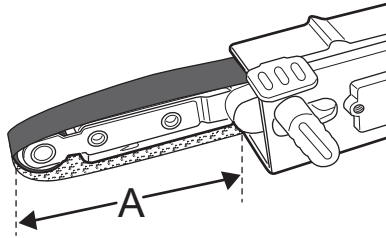


Fig. 21

- > To remove paint or smooth very rough wood, sand across the grain at 45° in two directions, and then finish parallel with the grain
- > Only apply as much pressure as necessary to keep the product flat on the workpiece. Higher pressure will not increase but lower the performance of the product and leads to uneven results.
- > Keep the product moving at all times, do not stop in one position to avoid grooves.
- > Lift the product from the workpiece before switching it off.

After use

- > Switch the product off, disconnect it from the power supply and let it cool down.
- > Check, clean and store the product as described below.

The golden rules for care



WARNING! Always switch the product off, disconnect the product from the power supply and let the product cool down before performing inspection, maintenance and cleaning work!



- > Keep the product clean. Remove debris from it after each use and before storage.

In more detail...

The golden rules for care

- > Regular and proper cleaning will help ensure safe use and prolong the life of the product.
- > Inspect the product before each use for worn and damaged parts. Do not operate it if you find broken and worn parts



WARNING! Only perform repairs and maintenance work according to these instructions! All further works must be performed by a qualified specialist!

General cleaning

- > Clean the product with a dry cloth. Use a brush for areas that are hard to reach.
- > In particular clean the air vents (15) after every use with a cloth and brush.
- > Remove stubborn dirt with high pressure air (max. 3 bar).



NOTE: Do not use chemical, alkaline, abrasive or other aggressive detergents or disinfectants to clean this product as they might be harmful to its surfaces.

- > Check for worn or damaged parts. Replace worn parts as necessary or contact an authorised service centre for repair before using the product again.

Maintenance

Before and after each use, check the product and accessories (or attachments) for wear and damage. If required, exchange them for new ones as described in this instruction manual. Observe the technical requirements.

Power cord

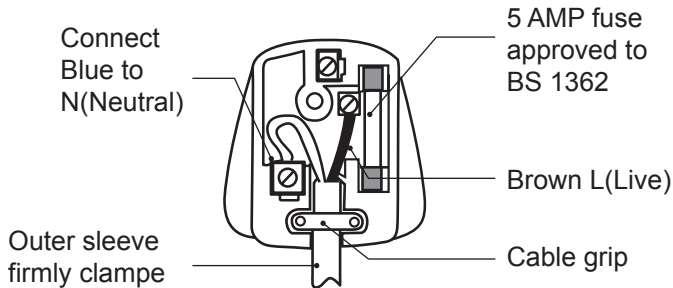
If the supply cord is damaged, it must be replaced by the manufacture or its service agent.

UK plug

If you need to replace the fitted plug, then follow the instructions below. **IMPORTANT:** The wires in the mains lead are coloured in accordance with the following code:

Blue – Neutral Brown – Live

As the colours of the wire in the mains lead of this product may not correspond with the coloured marking identifying the terminals in your plug, proceed as follows. The wire, which is coloured blue, must be connected to the terminal, which is marked with N or coloured black. The wire, which is coloured brown, must be connected to the terminal, which is marked L or coloured red.



WARNING! Never connect live or neutral wires to the earth terminal of the plug, which is marked with E.

Only fit an approved 5 Amp BS 1363 or BS 1363/A plug and the correctly rated fuse. If in doubt, consult a qualified electrician



NOTE: If a moulded plug is fitted and has to be removed take great care in disposing of the plug and severed cable, it must be destroyed to prevent engaging into a socket.

In more detail...

Repair

This product does not contain any parts that can be repaired by the consumer. Contact an authorised service centre or a similarly qualified person to have it checked and repaired.

Storage

- > Switch the product off and disconnect it from the power supply.
- > Clean the product as described above.
- > Store the product and its accessories in a dark, dry, frost-free, well-ventilated place.
- > Always store the product in a place that is inaccessible to children. The ideal storage temperature is between 10°C and 30°C.
- > We recommend using the original transport case (18) for storage or covering the product with a suitable cloth or enclosure to protect it against dust.

Transportation

- > Switch the product off and disconnect it from the power supply.
- > Pack the product and accessories into the transport case (18) before transportation.
- > Always carry the product by its handle (9).
- > Protect the product from any heavy impact or strong vibrations which may occur during transportation in vehicles.
- > Secure the product to prevent it from slipping or falling over.

Troubleshooting

Suspected malfunctions are often due to causes that the users can fix themselves. Therefore check the product using this section. In most cases the problem can be solved quickly.



WARNING! Only perform the steps described within these instructions! All further inspection, maintenance and repair work must be performed by an authorised service centre or a similarly qualified specialist if you cannot solve the problem yourself!

Problem	Possible cause	Solution
1. Product does not start	1.1. Not connected to power supply 1.2. Power cord or plug is defective 1.3. Other electrical defect to the product	1.1. Connect to power supply 1.2. Check by a specialist electrician 1.3. Check by a specialist electrician
2. Product does not reach full power	2.1. Extension cord not suitable for operation with this product 2.2. Power source (e. g. generator) has too low voltage 2.3. Air vents are blocked	2.1. Use a proper extension cord 2.2. Connect to another power source 2.3. Clean the air vents
3. Unsatisfactory result	3.1. Sanding belt is worn 3.2. Sanding belt not suitable for work piece material	3.1. Replace with new one 3.2. Use proper sanding belt

In more detail...

Recycling and disposal



Waste electrical products should not be disposed of with household waste. Please recycle where facilities exist. Check with your Local Authority or local store for recycling advice.

Guarantee

We take special care to select high quality materials and use manufacturing techniques that allow us to create products incorporating design and durability. This product (TITAN TTB910SDR) has a manufacturer's guarantee of 2 years against manufacturing defects, from the date of purchase (if bought in store) or date of delivery (if bought online), at no additional cost.

To make a claim under this guarantee, you must present your proof of purchase (such as a sales receipt, purchase invoice or other evidence admissible under applicable law), please keep your proof of purchase in a safe place. For this guarantee to apply, the product you purchased must be new, it will not apply to second hand or display products. Unless stated otherwise by applicable law, any replacement product issued under this guarantee will only be guaranteed until expiry of the original guarantee period.

This guarantee covers product failures and malfunctions provided the product was used for the purpose for which it is intended and subject to installation, cleaning, care and maintenance in accordance with the information contained in these terms and conditions, in the user manual and standard practice, provided that standard practice does not conflict with the user manual.

This guarantee does not cover defects and damage caused by normal wear and tear or damage that could be the result of improper use, faulty installation or assembly, neglect, accident, misuse, or modification of the product. Unless stated otherwise by applicable law, this guarantee will not cover, in any case, ancillary costs (shipping, movement, costs of uninstalling and reinstalling, labour etc), or direct and indirect damage.

This guarantee does not cover defects and damage caused by or resulting from:

- Normal wear and tear
- Overload, misuse or neglect
- Repairs attempted by anyone other than an authorised agent
- Cosmetic damage
- Damage caused by foreign objects, substances or accidents
- Accidental damage or modification
- Failure to follow manufacturer's guidelines
- Loss of use of the goods

If the product is defective, we will, within a reasonable time, repair or replace it. Rights under this guarantee are enforceable in the country in which you purchased this product. Guarantee related queries should be addressed to the store you purchased this product from.

The guarantee is in addition to and does not affect your statutory rights.

EC declaration of conformity

 (EN) EU DECLARATION OF CONFORMITY (FR) DÉCLARATION UE DE CONFORMITÉ (PL) DEKLARACJA ZGODNOŚCI UE (RO) DECLARAȚIA DE CONFORMITATE UE (ES) DECLARACIÓN UE DE CONFORMIDAD (PT) DECLARAÇÃO DE CONFORMIDADE UE		
Product/ Produit/ Produkt/Produsul/Producto/Produto		
<ul style="list-style-type: none"> Precision File Belt Sander/Ponçeuse à band e de precision/Precyzyjna szlifierka taśmowa/Șlefuitor de precizie cu bandă/Lijadora de banda de precision/Lixadora de correia de precisão TTB910SDR SN: 000001-999999 		
Name and address of the manufacturer or his authorised representative: Nom et adresse du fabricant ou de son mandataire: Nazwa i adres producenta lub jego upoważnionego przedstawiciela: Denumirea și adresa producătorului sau a reprezentantului său autorizat: Nombre y dirección del fabricante o de su representante autorizado: Nome e endereço do fabricante ou do respetivo mandatário:		
Kingfisher International Products B.V., Rapenburgerstraat 175E, 1011 VM Amsterdam, The Netherlands		
This declaration of conformity is issued under the sole responsibility of the manufacturer. La présente déclaration de conformité est établie sous la seule responsabilité du fabricant. Niniejsza deklaracja zgodności wydana zostaje na wyłączną odpowiedzialność producenta. Prezenta declarație de conformitate este emisă pe răspunderea exclusivă a producătorului. La presente declaración de conformidad se expide bajo la exclusiva responsabilidad del fabricante. A presente declaração de conformidade é emitida sob a exclusiva responsabilidade do fabricante.		
Object of the declaration/Objet de la déclaration/Przedmiot deklaracji/Obiectul declarației/Objeto de la declaración/Objeto da declaração		
Product/Produit/Produkt/Produsul/Producto/ Produto	Model/Modèle/Model/Modelul/Modelo/Modelo	EAN
Precision File Belt Sander/Ponçeuse à bande de precision/Precyzyjna szlifierka taśmowa/Șlefuitor de precizie cu bandă/Lijadora de banda de precision/Lixadora de correia de precisão	TTB910SDR	5059340252926 5059340252933
The object of the declaration described above is in conformity with the relevant Union harmonisation legislation: L'objet de la déclaration décrit ci-dessus est conforme à la législation d'harmonisation de l'Union applicable: Wymieniony powyżej przedmiot niniejszej deklaracji jest zgodny z odnośnymi wymaganiami unijnego prawodawstwa harmonizacyjnego: Obiectul declarației descris mai sus este în conformitate cu legislația relevantă de armonizare a Uniunii: El objeto de la declaración descrita anteriormente es conforme con la legislación de armonización pertinente de la Unión: O objeto da declaração acima descrito está em conformidade com a legislação de harmonização da União aplicável:		
2006/42/EC as amended 2014/30/EU as amended 2011/65/EU as amended	Machinery Directive Directive Electromagnetic compatibility Directive Restriction of the use of certain hazardous substances in electrical and electronic equipment	
2006/42/CE en tant que directive modifiée sur les machines 2014/30/UE telle que modifiée Directive Compatibilité électromagnétique Directive 2011/65/UE telle que modifiée Limitation de l'utilisation de certaines substances dangereuses dans les équipements électriques et électroniques		

In more detail...

2006/42/WE w zmienionej dyrektywie maszynowej
 2014/30/UE ze zmianami Dyrektywa Kompatybilność elektromagnetyczna
 2011/65/UE ze zmianami Dyrektywa Ograniczenie stosowania niektórych niebezpiecznych substancji w sprzęcie elektrycznym i elektronicznym

2006/42/CE, astfel a fost modificată Directiva privind echipamentele
 2014/30/UE, astfel a fost modificată Directiva privind compatibilitatea electromagnetică
 2011/65/UE, astfel a fost modificată Directiva privind limitarea utilizării anumitor substanțe periculoase în echipamentele electrice și electronice

Directiva sobre maquinaria modificada 2006/42/CE
 2014/30/UE modificada Directiva Compatibilidad electromagnética
 2011/65/UE modificada Directiva Restricción del uso de determinadas sustancias peligrosas en equipos eléctricos y electrónicos

2006/42/CE como diretiva de máquinas alteradas
 2014/30/UE como alteração da compatibilidade eletromagnética
 2011/65/UE como restrição diretiva alterada da utilização de certas substâncias perigosas em equipamentos elétricos e eletrônicos

References to the relevant harmonised standards used or references to the other technical specifications in relation to which conformity is declared:

Références des normes harmonisées pertinentes appliquées, y compris la date de celles-ci, ou des autres spécifications techniques, y compris la date de celles-ci, par rapport auxquelles la conformité est déclarée:

Odwolania do odnośnych norm zharmonizowanych, które zastosowano, wraz z datą normy, lub do innych specyfikacji technicznych, wraz z datą specyfikacji, w odniesieniu do których deklarowana jest zgodność:

Trimiteri la standardele armonizate relevante folosite, inclusiv data standardului, sau trimiteri la celelalte specificații tehnice, inclusiv data specificațiilor, în legătură cu care se declară conformitatea:

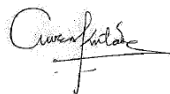
Referencias a las normas armonizadas pertinentes utilizadas, incluidas las fechas de las normas, o referencias a las otras especificaciones técnicas, incluidas las fechas de las especificaciones, respecto a las cuales se declara la conformidad:

Referências às normas harmonizadas aplicáveis utilizadas, incluindo a data da norma, ou às outras especificações técnicas, incluindo a data da especificação, em relação às quais é declarada a conformidade:

EN 62841-1:2015
 EN 62841-2-4:2014
 EN IEC 55014-1:2021
 EN IEC 55014-2:2021
 EN IEC 61000-3-2:2019+A1:2021
 EN 61000-3-3:2013+A1:2019

Authorized Signatory and technical file holder/ Signataire et responsable de la documentation technique autorisé/
 Podmiot uprawniony do wystawienia i adres przechowywania dokumentacji technicznej/ Semnatar autorizat și
 deținătorul dosarului tehnic/ Firmante autorizado y titular del expediente técnico/Signtário autorizado e detentor
 da ficha técnica:


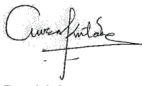
Kingfisher International Products B.V.,
 Rapenburgerstraat 175E,
 1011 VM Amsterdam,
 The Netherlands



David Awe
 Group Quality Director

On: 06/01/2022

EC declaration of conformity

 (UK) DECLARATION OF CONFORMITY		
Product		
<ul style="list-style-type: none"> •400W Precision File Belt Sander •TTB910SDR •Serial number: 00001 to 999999 		
Name and address of the manufacturer or his authorised representative:		
Kingfisher International Products Limited 3 Sheldon Square London W2 6PX United Kingdom		
This declaration of conformity is issued under the sole responsibility of the manufacturer.		
Object of the declaration		
Product	Model	EAN
400W Precision File Belt Sander	TTB910SDR	5059340252926
The object of the declaration described above is in conformity with the relevant legislation:		
Supply of Machinery (Safety) Regulations 2008 as amended Electromagnetic Compatibility Regulations 2016 as amended The Restriction of the use of Certain Hazardous Substances in Electrical and Electronic Equipment Regulations 2012 as amended		
References to the relevant designated standards used or references to the other technical specifications in relation to which conformity is declared:		
BS EN 62841-1:2015 BS EN 62841-2-4:2014 BS EN IEC 55014-1:2021 BS EN IEC 55014-2:2021 BS EN IEC 61000-3-2:2019+A1:2021 BS EN 61000-3-3:2013+A1:2019		
Authorized Signatory and technical file holder:		
Kingfisher International Products Limited 3 Sheldon Square London W2 6PX United Kingdom		
 David Awe Group Quality Director		
		On:06/01/2022

In more detail...



TITAN

Manufacturer, Fabricant, Producent, Producător, Fabricante:

UK Manufacturer:

Kingfisher International Products Limited
3 Sheldon Square, London, W2 6PX
United Kingdom
www.kingfisher.com/products

EU Manufacturer:

Kingfisher International Products B.V.
Rapenburgerstraat 175E
1011 VM Amsterdam
The Netherlands
www.kingfisher.com/products

- | | | |
|-----------|--|---|
| EN | www.screwfix.com
www.screwfix.ie | To view instruction manuals online, visit
www.kingfisher.com/products |
| FR | www.bricodepot.fr | Pour consulter les manuels d'instructions en ligne,
rendez-vous sur le site www.kingfisher.com/products |
| ES | www.bricodepot.es | Para consultar los manuales de instrucciones en línea,
visite www.kingfisher.com/products |
| PT | www.bricodepot.pt | Para consultar manuais de instruções online, visite
www.kingfisher.com/products |