

Helpdesk & Resources

Visit Swann Support Center at support.swann.com. You can register your product for dedicated customer support, download guides, find answers to commonly asked questions, and more.



Product Registration



Customer Support



Product Manuals



Frequently Asked Questions



Support Community



M4KDECAMREV1E | © Swann 2021

5 Camera Location Tips

1. Take into consideration what you want to monitor and where you'll get the best view of it.
2. How you're going to connect the camera to your monitoring system; remember that cables and connections should be kept out of the weather.
3. How to keep the camera out of harm's way. We recommended mounting your camera at an elevated position.
4. Place your camera as close to the area of interest as practicable. The best position is from about 13ft/4m above looking slightly down, keeping in mind the details you are looking for.
5. Although the sky looks nice when you look at the live view from your camera, it is an unlikely direction for an offender to approach. Make sure your camera has minimal sky in it as the light in daylight can make the foreground of the image darker.
6. Think about the most likely way a potential offender may approach your home, use your camera to give you the best coverage of these areas.
7. The camera's casing is resistant to different weather conditions and tampering. It would take an overwhelming event to damage the housing.
8. The camera is weather and water-resistant but, prolonged exposure to adverse weather conditions such as sunlight and excessive moisture can damage the internal components.
9. Run cables inside a wall cavity or other protected enclosure, and ensure that all wiring and connectors are insulated and protected from moisture.
10. Don't put your cable near live electrical wiring. AC electricity generates radio noise, which can interfere with the signal from your camera.

6 Limited Warranty - Terms & Conditions

Swann Communications warrants this product against defects in workmanship and material for a period of one (1) year from its original purchase date. You must present your receipt as proof of purchase for warranty validation. Any unit which proves defective during the stated period will be repaired without charge for parts or labour or replaced at the sole discretion of Swann. The end user is responsible for all freight charges incurred to send the product to Swann's repair centres. The end user is responsible for all shipping costs incurred when shipping from and to any country other than the country of origin.

The warranty does not cover any incidental, accidental or consequential damages arising from the use of or the inability to use this product. Any costs associated with the fitting or removal of this product by a tradesman or other person or any other costs associated with its use are the responsibility of the end user. This warranty applies to the original purchaser of the product only and is not transferable to any third party. Unauthorized end user or third party modifications to any component will render all warranties void. By law some countries do not allow limitations on certain exclusions in this warranty. Where applicable by local laws, regulations and legal rights will take precedence.

For Australia: Our goods come with guarantees which cannot be excluded under Australian Consumer Law. You are entitled to a replacement or refund for a major failure and for compensation for any other reasonably foreseeable loss or damage. You are also entitled to have the goods repaired or replaced if the goods fail to be of acceptable quality.



Enforcer™ Dome Security Camera

4K Ultra HD for DVRs

Instruction Manual

1 Introduction

Congratulations on the purchase of your Swann Enforcer™ Dome Security Camera.

- 4K Ultra HD video with sensor spotlight, siren plus red & blue flashing lights
- True Detect™ Heat & Motion sensing for reliable alerts
- Powerful Night2Day™ color night vision
- Works in rain & snow all year round
- Reliable BNC cable connection

Important instructions

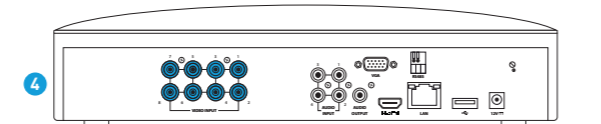
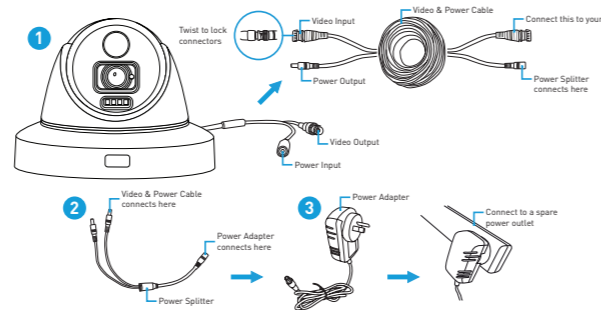
1. Make sure the camera is fixed correctly and stable if fastened in place.
2. Never place strain of any kind on the network cable connection. It's designed to clip into the Ethernet port, but it won't support weight and can be broken.
3. Do not operate if wires and terminals are exposed.

Important Note: All jurisdictions have specific laws and regulations relating to the use of cameras. Before using any camera for any purpose, it is the buyer's responsibility to be aware of all applicable laws and regulations that limit the use of cameras.

About this Manual: The content in this manual is for information purposes only and is subject to change without notice. While every effort is made to ensure that this manual is accurate at the time of printing, no liability is assumed for any errors occurred.

For instructions on how to configure your camera for motion detection, changing image settings, and other functions available, please consult the manual for your DVR. Go to support.swann.com, search for your model, then download.

2 Connecting the Camera



For single camera packs, connect the supplied power adapter directly to the power input on the video & power cable.

1. Connect the video output and power input connections on the camera to the corresponding connections on the supplied video & power cable.
2. Connect the supplied power splitter to the power input on the video & power cable (repeat this step if multiple cameras are included).
3. Connect the supplied power adapter to the other end of the power splitter then connect the power adapter to a spare wall socket.
4. Connect the video output on the video & power cable to an available camera input on your DVR. Twist the connection to lock it in place.

3 Mounting the Camera

The camera can be mounted onto a flat vertical or horizontal surface and must be of sufficient strength to hold the camera.

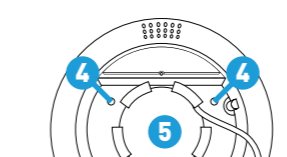
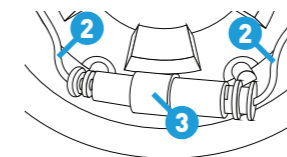
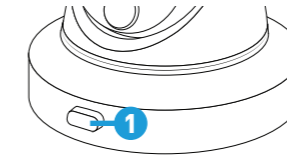
Step 1: Press the button (1) to release the dome enclosure and the dome camera from the mounting bracket.

Step 2: You will see a black cable (2) connected to the camera, which in turn is connected to the camera bracket's black cable. Rotate the seal cap (3) clockwise and gently pull apart the connection to disconnect. Remove the dome camera from the camera bracket.

Step 3: Position the mounting bracket in the location you want to mount the dome camera to. Using a pencil or magic marker, mark the mounting holes (4) and hole (5) for the camera's cable.

Use a hole saw that you can attach to a drill to make a hole for the cable. A large drill bit can also be used.

(continued on next page)



4 Mounting the Camera

Step 4: Using the appropriate screws for the surface you are mounting to, secure the bracket in place. If mounting to a wooden surface, screw the bracket directly to the surface. If mounting to a masonry surface (brick or concrete), you'll need to use the supplied wall plugs.

Step 5: Connect the Video & Power Cable to the corresponding connections on the camera's cable. Reconnect the black cable on the camera to the black cable connected to the bracket. Rotate the seal cap anti-clockwise to tighten.

Sit the dome camera onto the camera bracket (as shown above right), then place the dome enclosure into the camera bracket and lock it in place. The camera can be rotated left or right (rotate the camera bracket left or right as well) or up and down. Check the image on your DVR and make adjustments as necessary.

