

# wallrock<sup>®</sup> fibreliner smooth

150gsm



**A very strong lining with a silky smooth finish for covering and reinforcing surfaces quickly and easily**

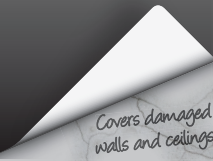
Excellent performance on problem surfaces such as rough and damaged plaster, cracked rendering and wood panelling.

Also perfect for covering plasterboard that has not been skimmed.

Hang straight from the roll onto pre-pasted surface or paste-the-paper.

Ideal for emulsion painting or overhanging with another wallcovering.

*transforming the rough into the smooth*

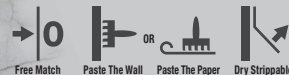


**SINGLE** 55cm(21") roll

**ERFURT** **mav**

**Anaglypta<sup>®</sup>**  
Since 1887

- ✓ Excellent Base for Paint or Paper
- ✓ Vinyl and Fibreglass Free
- ✓ Quick and Easy to Hang
- ✓ Paste the Paper or the Wall
- ✓ Allows Walls to Breathe
- ✓ Amazing Strength and Tear Resistance
- ✓ Fire Rated

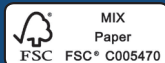
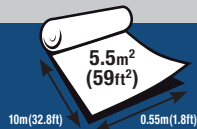


Retford Wallcoverings Ltd, Gainsborough, DN21 1QB, UK

Helpline (UK): +44 (0)1427 616597

[www.anaglypta.co.uk](http://www.anaglypta.co.uk)

[www.erfurtmav.com](http://www.erfurtmav.com)



Typical adhesive and consumption	
Power Adhesive, 1Kg per 5m <sup>2</sup> * (2.2lb per 10.7ft <sup>2</sup> )	
<small>*see reverse for details</small>	

CE	Retford Wallcoverings Limited Unit 26, Corringham Road Ind. Est. Gainsborough, DN21 1QB
	18
	EN 15102: 2007 Lining Paper



# Wallrock<sup>®</sup> fibreliner smooth 150gsm

**Wallrock Fibreliner** is the modern alternative to traditional lining papers, producing a superb finish both quickly and easily which is also highly durable.

**Wallrock Fibreliner** produces a strong reinforced base over plaster which will cover and combat the emergence of cracks. Wallrock Fibreliner is also suitable for covering plasterboard, thermal boards and wood panelling. Once dry it can be emulsion painted or overhung with a decorative wallpaper.

## Instructions

We recommend that before beginning all rolls are checked for damage and defects and you have enough for the job in hand. Return any damaged or faulty rolls with their labels to the point of purchase.

## Preparation

- Surfaces painted prior to 1960 may contain lead pigments - precautions should be taken if disturbing such surfaces.
- Turn off electricity when working around switches, sockets, light fittings etc.
- Surfaces must be free from dust, smooth and dry.
- Fill and smooth cracks and holes - Wallrock will bridge minor cracks and holes.
- Porous surfaces such as new plaster and plasterboards should be primed/sealed.
- Non absorbant surfaces should be lightly sanded.
- Freshly painted surfaces should be thoroughly dry before application of the Fibreliner begins.

## Adhesive

A good quality ready-mixed adhesive such as Wallrock Power Adhesive is recommended for application of this product.

\* Typically you will need 1Kg of adhesive per 5m<sup>2</sup>

**NB:** Regular flake adhesives may not provide sufficient bond strength in some circumstances.

## Application

Wallrock Fibreliner can be applied using paste the wall technique or 'traditionally' by application of pre-cut and pasted lengths.

**NB:** Either side of the Fibreliner can be pasted but the outer surface of the roll is the surface we recommend if the Fibreliner is to be painted.

Most important is that the same side of each roll is applied to the wall for the whole room - otherwise variations in surface finish may be evident.



## Application - Paste The Wall Technique

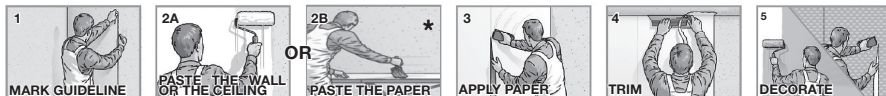
- Mark a guideline for the first length - for walls use a spirit level or plumbline depending whether you wish to apply the Fibreliner horizontally or vertically.
- Apply adhesive direct to the wall or ceiling surface with a roller. Apply over an area for one or two lengths at a time ensuring the area exceeds the width required. Use a brush to apply paste to areas the roller cannot reach.
- Apply the Fibreliner directly to the pre-pasted surface - or apply pre-cut lengths if preferred using the guideline to ensure the Fibreliner is applied horizontally or vertically. Smooth out with a wallpaper smoother or wallpaper brush working from the centre outwards. Trim at edges using a former and sharp knife or mark with a pencil and trim with decorators shears.
- Butt joint all subsequent lengths and avoid overlapping.
- Allow to dry thoroughly before painting or application of decorative paper. Twenty four hours is normally sufficient but considerably longer may be required in some circumstances

## Application - Traditional Technique

- If preferred pre-cut lengths can be pre-pasted individually on a pasting table as an alternative to applying the paste to the ceiling or wall.

**NB:** No soaking time needs to be observed when using this technique.

## Application - Quick Guide To Both Techniques



**Please go to our website to see the whole Wallrock Range including; Wallrock Thermal Liner, Wallrock Magnetwall and Wallrock Thermal Dampstop.**