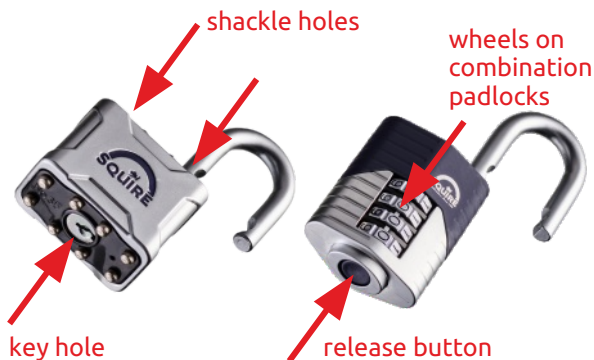




## How to Lubricate your locks



Use a silicone based lubricant to help keep your lock in excellent working condition. Using silicone based lubricants will give better protection than using other standard products.

Squire recommend using monthly to ensure optimum performance

### Key operated locks

Ensure that you apply lubricant to the key hole and around the area where the cylinder fits into the padlock body. With keyed locks, the cylinder area is an essential area to keep clean. Spray lubricant liberally in and around the cylinder and on the key itself, then enter key slowly and repeatedly and then turn the key repeatedly to flush out any contamination.

Open the shackle and spray oil into and around shackle holes. Spray the legs of the shackle itself.

### Combination locks

Spray around the shackle holes and the shackle as described for key operated locks. Lubricate the wheels and swiftly turn after lubricating to ensure the lubricant is well distributed. Spray around the release button on the button on the bottom of the padlock and repeatedly press the button to ensure frictionless movement.

All Squire products are covered by a 10 Year personal guarantee.



### Henry Squire & Sons Limited

Hilton Cross Business Park, Cannock Road, Featherstone, Wolverhampton, WV10 7QZ

Tel: 01902 308050 E-Mail: [info@henry-squire.co.uk](mailto:info@henry-squire.co.uk) Website: [www.squirelocks.co.uk](http://www.squirelocks.co.uk)