

Front

Rear

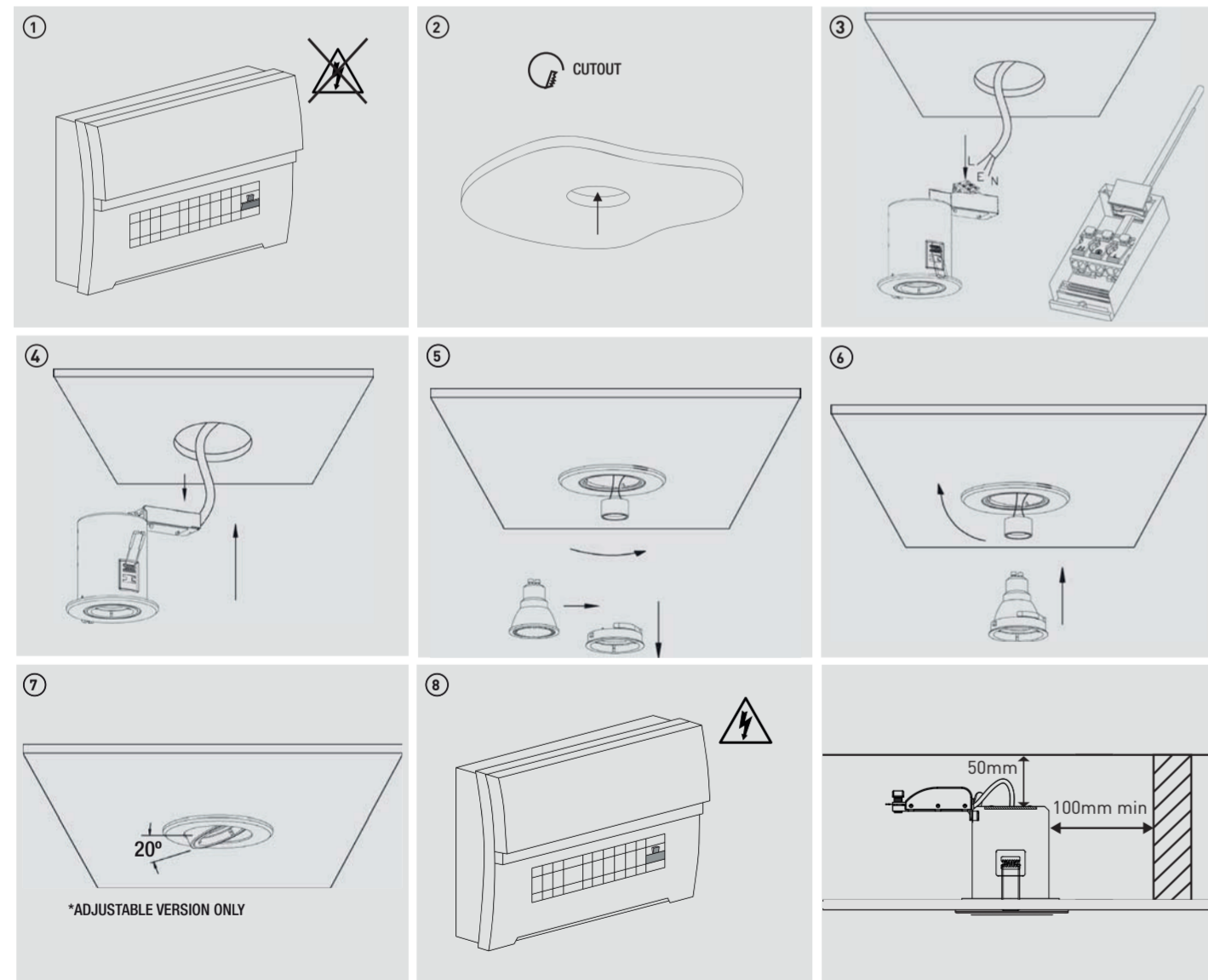
210mm

Installation & Operating Instructions

Fire Rated Downlight



PART CODE	POWER SOURCE / FREQUENCY	MAXIMUM LAMP WATTAGE	CUTOUT
7878V	220-240V AC - 50/60Hz	50W	Ø82mm
3703V	220-240V AC - 50/60Hz	50W	Ø82mm
9673V	220-240V AC - 50/60Hz	50W	Ø82mm
8253V	220-240V AC - 50/60Hz	50W	Ø82mm
6627V	220-240V AC - 50/60Hz	50W	Ø72mm
8619V	220-240V AC - 50/60Hz	50W	Ø72mm
1643V	220-240V AC - 50/60Hz	50W	Ø72mm
5478V	220-240V AC - 50/60Hz	50W	Ø72mm



297mm



Luminaires are only suitable for mounting on non-combustible surfaces



Minimum distance from lighted objects (metres)



Luminaires not suitable for covering with thermally insulating material



Luminaires designed to be used with LED GU10 Lamps, Self-shielded Tungsten Halogen Lamps or self-shielded Metal halide Lamps

ENVIRONMENTAL PROTECTION W.E.E.E

This symbol is known as the "crossed-out" wheellie bin symbol". When this symbol is marked on a product or battery, it means that it should not be disposed of with your general household waste. Some chemicals contained within electrical/electronic products or batteries can be harmful to health and the environment. Only dispose of electrical/electronic/battery items in separate collection schemes, which cater for the recovery and recycling of materials contained within. Your co-operation is vital to ensure the success of these schemes and for the protection of the environment.



GUARANTEE

Congratulations on your purchase of a quality LAP product. We are confident in the quality of this product, but for your peace of mind it comes with a 3 year guarantee. If your product develops a fault within the guarantee period, please contact the retailer where the item was purchased, with your proof of purchase, where the product will be replaced or refunded.

This guarantee specifically excludes:

- Fair wear and tear
- Misuse or abuse
- Lack of routine maintenance (see care instructions)
- Failure of fixings
- Accidental damage
- Cosmetic damage
- Failure to follow the manufacturer's fitting/ care and maintenance instructions

This guarantee is limited to the purchase price of the product and the manufacturer's liability does not extend to any costs damages or losses whatsoever in excess of that amount. Proof of purchase is required. This guarantee does not affect your statutory rights.

Call on - **0800 068 0292**

Powersmith Ltd, BA22 8RT, UK

yyWxx: Manufacturing date code; year of manufacturing (20yy) and week of manufacturing (Wxx)