

## 8W LED Oval bulkhead Type:L3512 Ref:7271P



V11020 BX220IM  
1

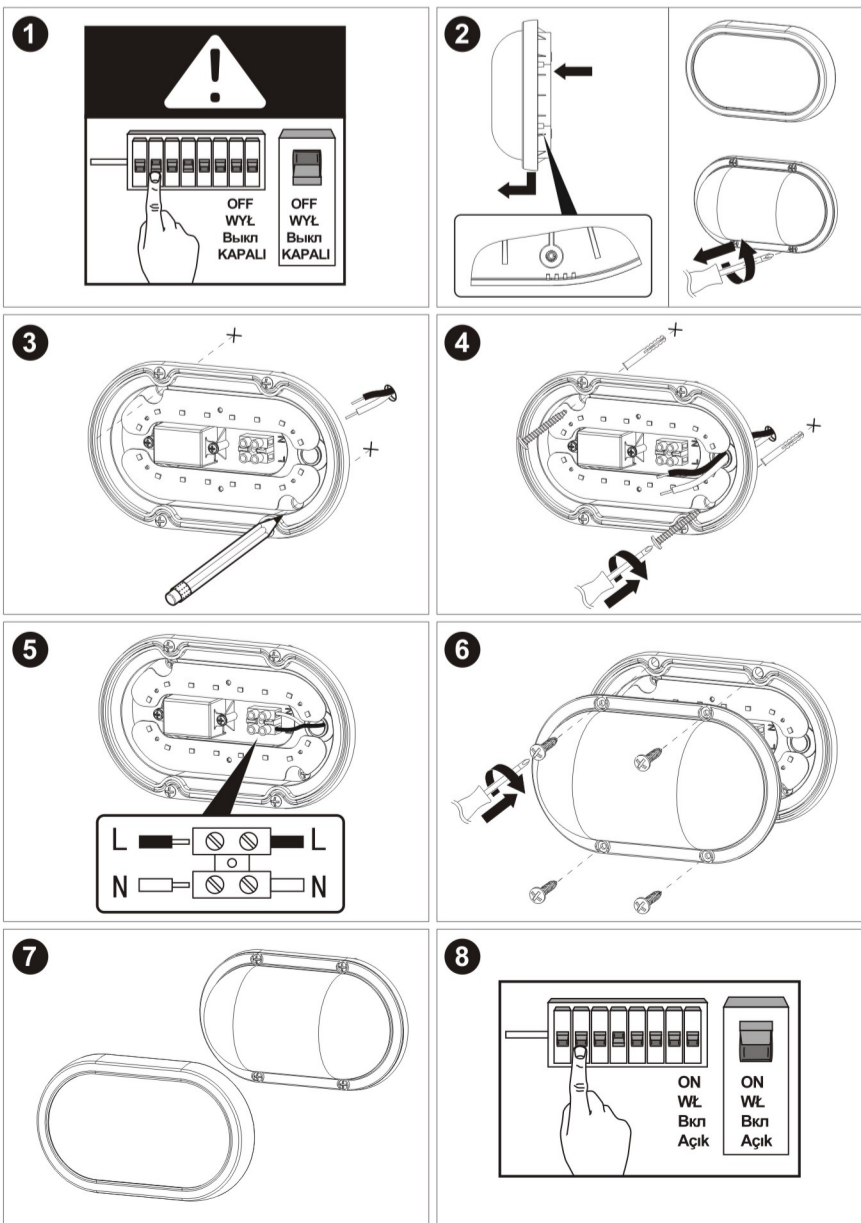
### SECTION ONE

#### SITING INSTRUCTION

- Check the pack and make sure you have all of the parts listed.
- Decide on the appropriate location for your product.
- This product is rated IP54 (definition e.g. splash proof / rain proof etc). It is suitable for use outdoors but should not be immersed in water, sited in areas likely to be heavily splashed either from above or below, or subjected to standing water.
- Caution: Do not stare directly at the LED light beam.
- The product must be securely fixed to the mounting surface using the screws and wall plugs supplied. The screws and wall plugs supplied are suitable for "masonry" only. Other fixings not supplied and must be purchased.
- This product is not suitable for dimming.
- **IMPORTANT:** Always switch off the mains supply during installation or maintenance. We recommend that the fuse is withdrawn or the circuit breaker switched off at the distribution board whilst work is in progress (turning off the light switch is not sufficient).
- Connection should be via a wall switch to enable safe isolation.
- This product is double insulated and must not be earthed. If there are any incoming earth cables, they must be joined together using a suitable connector (not supplied) and well insulated with good quality insulation tape.
- All fittings must be installed by a competent person in accordance with local regulations.
- The light source of this luminaire is not replaceable; when the light source reaches its end of life the whole luminaire shall be replaced.

2

### SECTION TWO INSTALLATION



3

### SECTION THREE SPECIFICATIONS

- Power required: 220-240V~ 50 Hz
- Total input power: 8W
- Weatherproof: IP54
- Protection: Class II
- Rated total lumen of product: 600lm
- Color temperature: 6500K
- Environmental Protection. Waste electrical products should not be disposed of with household waste. Please recycle where facilities exist. Check with your Local Authority or retailer for recycling advice.



yyWxx: Manufacturing date code; year of manufacturing (yy) and week of manufacturing (Wxx)

**UK Manufacturer:** Kingfisher International Products Limited, 3 Sheldon Square, London, W2 6PX, United Kingdom [www.kingfisher.com/products](http://www.kingfisher.com/products) • [www.screwfix.com](http://www.screwfix.com)

**EU Manufacturer:** Kingfisher International Products B.V., Rapenburgerstraat 175E, 1011 VM Amsterdam, The Netherlands • [www.screwfix.ie](http://www.screwfix.ie)

4