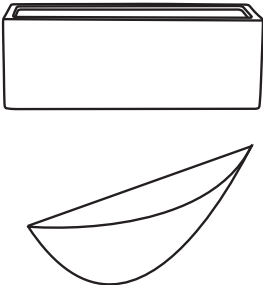


# Installation and Safety Instructions

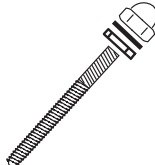

## Ceramic Wall light

These instructions are for your safety. Please read through them thoroughly before use and retain for future reference.

### Parts Supplied

Ref	Description	Illustration	Qty
A	Light fitting (examples shown only)		1

### Fittings Supplied

Ref	Description	Illustration	Qty
B	Screw Set		2
C	Wall plug		2

### Tools Required (not supplied)

3mm Flat Blade Screwdriver  
6mm Cross Headed Screwdriver  
Power Drill  
6mm masonry drill bit (for masonry only)  
Pencil  
7/8mm Spanner/ Sockets/ Adjustable spanner

### Sundries / Extras (not supplied)

Insulating Tape  
Earth Sleeving  
Cavity Wall Fixings

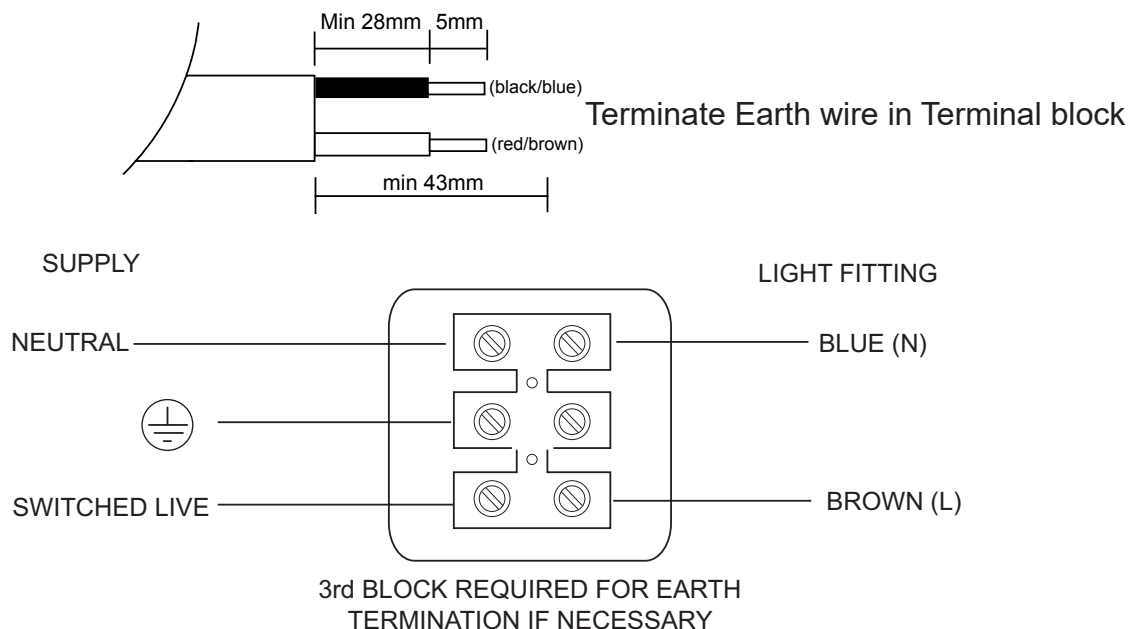
### Siting Instructions

1. This product is only suitable for use in living areas (not for areas constantly subject to moisture).
2. This product is suitable for indoor use only.
3. Do **not** attach to surfaces which are damp, freshly painted or otherwise electrically conductive (e.g. metallic surfaces).
4. This product is suitable for installation on surfaces with normal flammability e.g. wood, plasterboard, masonry. It is not suitable for use on highly flammable surfaces (e.g. polystyrene, textiles).
5. The chosen location should allow for the product to be securely mounted and safely connected to the mains supply (lighting circuit).
6. Please ensure that this light is mounted out of the reach of children.

## Electrical Installation

1. **IMPORTANT.** Always switch off the electricity supply at the mains during installation and maintenance. We recommend that the fuse is withdrawn or circuit breaker switched off at the distribution board whilst work is in progress (turning off the lightswitch is **not** sufficient). Attach a very clear note to the distribution board stating that you are working on the circuit.
  2. All fittings must be installed by a competent person in accordance with current IEE Wiring Regulations and local Building Regulations. If in doubt, consult a qualified electrician.
  3. Decide on the location of the product (see siting above). Using the mounting holes as a template (hole spacing 200mm), mark the location of the fixing holes on the mounting surface.
  4. Ensure there are no pipes or mains cables immediately behind the mounting points, then drill out the fixing holes (dia. 6mm) on the mounting surface and insert the wall plugs.  
**Note:** The supplied fixings are suitable for fixing into masonry only. Other fixings should be obtained for cavity walls or plasterboard.
  5. Secure the mounting screws to the mounting surface. Use both nut and dome nut to screw the fixing into the wall plug. Fig 1.
  6. Open the terminal box and connect the supply wires to the terminal block, opposite the corresponding wires from the fitting. If necessary prepare the supply cables. See below. Ensure that connections are tight and no loose strands of wire are left out of the connector blocks. This product is double insulated and must not be earthed. If there are any incoming earth cables, they must be joined together using a suitable connector (not supplied) and well insulated with good quality insulation tape. This is to ensure earth continuity throughout your property. □
- It may be necessary for an assistant to hold the fitting in place whilst the connections are made. When completed, ensure that there are no bare or loose strands of wire exposed, and replace terminal box cover securely.

## Terminal Block Wiring Arrangement



7. Secure the product to the mounting surface by locating the screws through the holes in the wall cover. Ensure the product sits flush against the wall with the terminal box in the recess. Add washers and tighten the nuts to secure. Fit domed nuts. Ensure no cables are trapped or damaged during assembly. Do not over tighten.

## Bulb Fitting & Replacement

1. Switch off product (preferably, isolate at distribution board) and allow to cool (**caution: bulbs get hot in use**).
2. Remove failed bulb by turning anticlockwise.
3. Obtain a new bulb, type **Max. 40W Candle shape E14 (SES)** or low energy equivalent. **Caution: do not use any other type of bulb.**
4. Insert the bulb gently into the fitting. Screw clockwise into the lampholder.
5. Restore mains supply and switch on.

## Care & Use

- Always switch off or disconnect from the mains when cleaning the product.
- Wipe clean with a soft dry cloth. Never use scourers, abrasives or chemical cleaners. Do not allow moisture to come into contact with electric parts.
- This product is suitable for use with dimmer switches (total load 40W - check dimmer switch instructions for compatibility). Note - some low energy lightbulbs may not be compatible with dimmer switches.
- Waste electrical products should not be disposed of with household waste. Please recycle where facilities exist. Check with your Local Authority or retailer for recycling advice.

Fig. 1

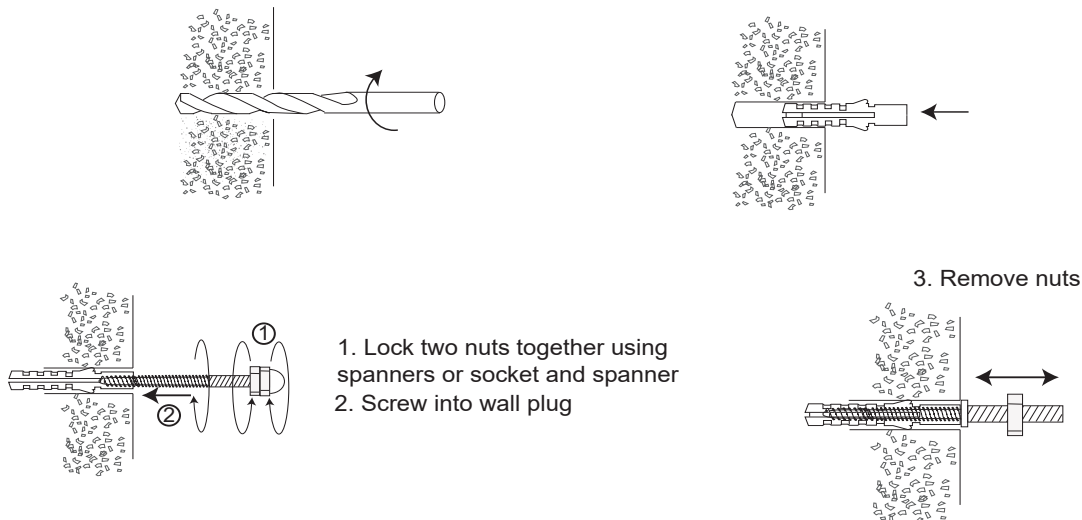


Fig. 2

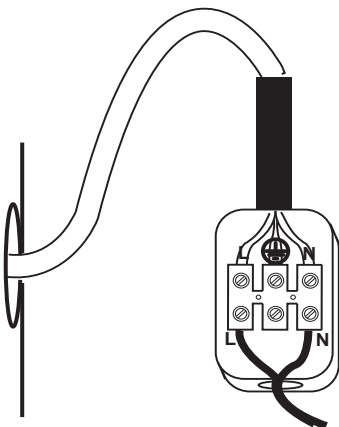


Fig. 3

