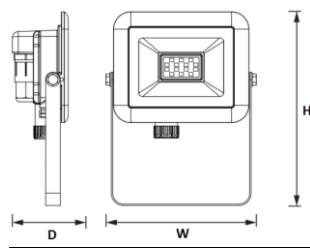


BR3010	LED 10W CCT All in One Floodlight
BR3020	LED 20W CCT All in One Floodlight
BR3030	LED 30W CCT All in One Floodlight
BR3050	LED 50W CCT All in One Floodlight
BR3001	Plug in PIR

CCT All in One Floodlight

Features	Dimensions																				
<ul style="list-style-type: none"> Colour temperature selectable – 3000K/4000K/5000K Plug and play IP65 PIR connection – PIR sold separately Integrated IP65 connector to terminate the cable directly into Toughened glass diffuser and aluminium housing Ideal and energy efficient LED technology replacement for traditional flood lights 	 <table border="1"> <thead> <tr> <th></th> <th>Width (W)</th> <th>Depth (D)</th> <th>Height (H)</th> </tr> </thead> <tbody> <tr> <td>10W</td> <td>109mm</td> <td>60mm</td> <td>156.5mm</td> </tr> <tr> <td>20W</td> <td>126mm</td> <td>60mm</td> <td>166mm</td> </tr> <tr> <td>30W</td> <td>164mm</td> <td>60mm</td> <td>197mm</td> </tr> <tr> <td>50W</td> <td>189mm</td> <td>60mm</td> <td>217mm</td> </tr> </tbody> </table>		Width (W)	Depth (D)	Height (H)	10W	109mm	60mm	156.5mm	20W	126mm	60mm	166mm	30W	164mm	60mm	197mm	50W	189mm	60mm	217mm
	Width (W)	Depth (D)	Height (H)																		
10W	109mm	60mm	156.5mm																		
20W	126mm	60mm	166mm																		
30W	164mm	60mm	197mm																		
50W	189mm	60mm	217mm																		

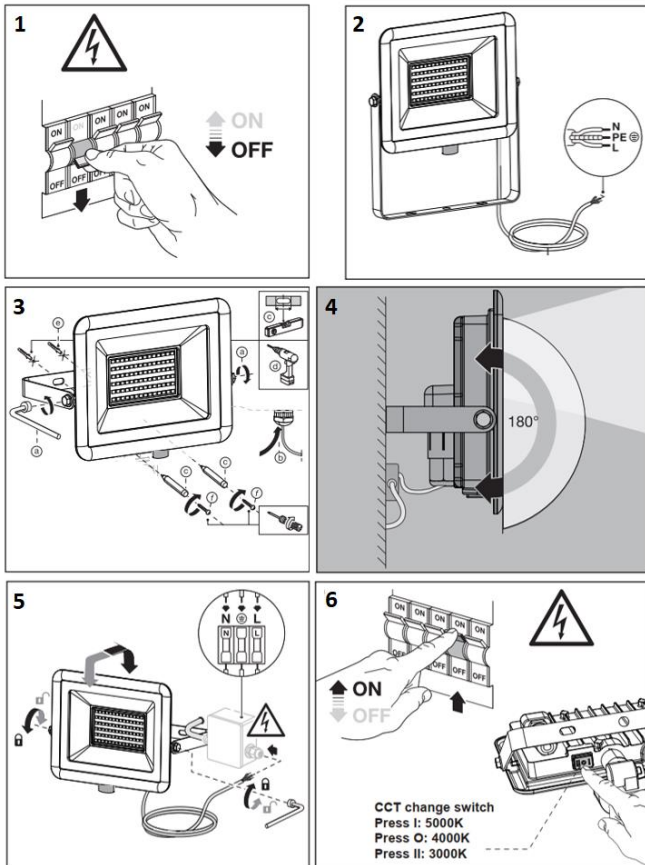
Safety Instructions

- These instructions should be read carefully and retained after installation for future reference and maintenance.
- Ensure that the mains power is switched off before carrying out installation or maintenance.
- Check that the total load on the circuit including this luminaire does not exceed the rating of the circuit cable, fuse or circuit breaker
- It is recommended that luminaires are installed and fitted by a qualified electrician ensuring the installation complies with the current edition of IET wiring regulations - BS 7671. This luminaire is electrical class 1 construction and must be earthed.
- Ensure all electrical connections are secure and that there are no loose strands.

Environmental Instructions

This product may contain substances that can be hazardous to the environment if not disposed of properly. Electrical and electronic equipment should never be disposed of with general household waste but must be separated for its correct treatment and recovery. Where possible recycle your packaging.

Installation Instructions – Standard Flood Light



SUGGESTED METHOD OF INSTALLATION

Read instructions and check you have all the tools and accessories to complete the installation safely and in compliance with current electrical standards.

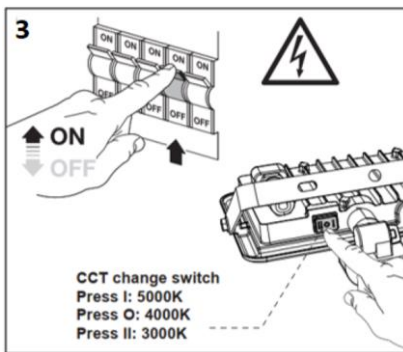
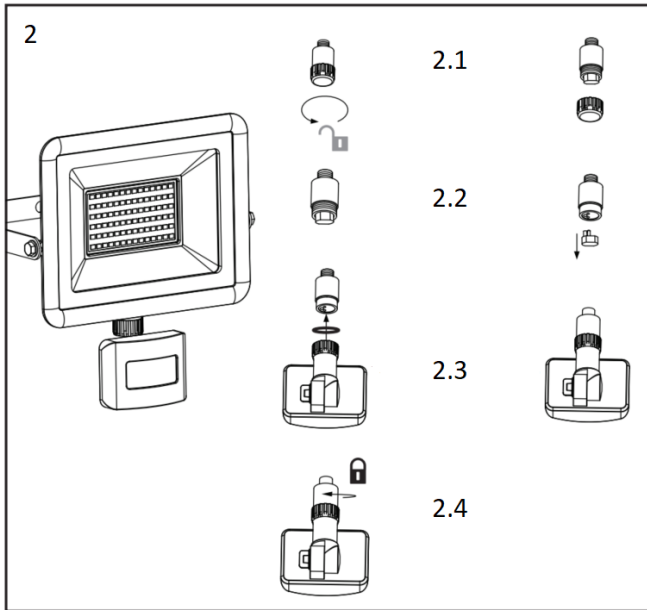
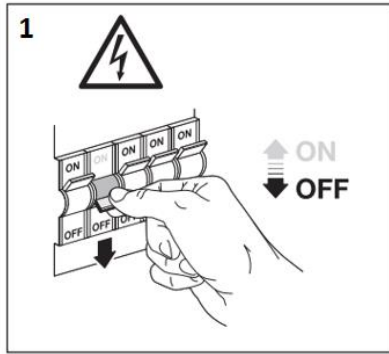
- Switch off the electricity at the fuse box by removing the relevant fuse or switching off the circuit breaker before proceeding with the installation.
- On rear of the flood light, unscrew the connector cover to reveal the wiring terminals. Terminate one end of a 3-core cable into the connector terminals, ensuring the correct polarity is observed and the unit is earthed. Replace the connector cover back in place to sure the cable is secure, and the IP rating of the connector is maintained.
- Use the mounting bracket as a template to mark hole centres. Drill the fixing holes and fit suitable wall plugs. Secure the metal bracket in place with screws.
- Using a suitable hex key, loosen the bracket bolts on side of the floodlight to adjust the floodlight to desired angle
- Terminate the mains supply cable into the terminals in the suitable junction box. The live conductor should be in-line with the circuit breaker and any isolation switches

Standard Wiring

- Brown to live
- Blue to neutral
- Green / Yellow to earth

- Use the CCT changing rocker switch to select the desired colour temperature. Switch on the power supply and check the operation.

Installation Instructions – Plug in PIR



SUGGESTED METHOD OF INSTALLATION

1. Switch off the electricity at the fuse box by removing the relevant fuse or switching off the circuit breaker before proceeding with the installation.
2. To fit the PIR* to the flood light:
 - 2.1 Loosen and remove the cover from the plug-in connection point on the underside of the flood light.
 - 2.2 Remove the plastic lug from the connection point. Pliers may be required to pull out the lug.
 - 2.3 Insert the connector end of the PIR sensor into the mating half on the flood light
 - 2.4 Tighten the PIR lock cover to ensure PIR is securely fixed to the flood light.
3. Use the CCT changing rocker switch to select the desired colour temperature. Switch on the power supply and check the operation.

***Note:** For PIR sensor functional settings, refer to the instruction manual supplied with the PIR sensor, Part code BR3001.

Specification

Input Voltage:	220V – 240V AC 50Hz	Beam Angle:	120°
Electrical Classification:	Class I	Housing Material/Colour:	Aluminium/Black
Efficacy:	90lm/W	Diffuser Material:	Toughened Glass
Colour Temperature (CCT):	3000K /4000K /5000K Selectable	IP Rating:	IP65
CRI Index (Ra):	>70	Standard:	BS EN 60598-2-5:2015

Deta Electrical Company Limited

Kingsway House Laporte Way
Luton Bedfordshire LU4 8RJ UK

Tel.: +44 (0)1582 544 455 Technical Helpline: +44(0)1582 544 548