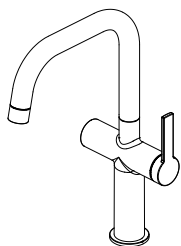
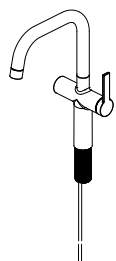




Mendip



Filter mixer
Barcode: 5059340229867



[01] x 1



[02] x 1



[03] x 1



[04] x 1



[05] x 1



[06] x 1



[07] x 1



[08] x 2



[09] x 2



[10] x 1



[11] x 1

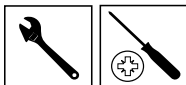


[12] x 1



[13] x 1

You will need



Before you start

This tap is suitable for use at water supply pressures of 0.5 bar (min.) to 5 bar (max.).

This product must be connected to the water supply in accordance with the UK Building Regulations. If you are in any doubt about these requirements, contact a qualified plumber, your local Water Company, or the Water Regulations Advisory Scheme (WRAS).

- Identify all components and check pack contents.
- Turn off mains water supply. The main stopcock is usually situated where the supply enters the building.
- It is also recommended that the water heating arrangements are turned off.
- Drain the cold and hot water system. It is recommended to ensure complete drainage, that all taps are opened. There is no need to drain the heating system.

After Care

Ensure the tap is fully turned off after use. To maintain the appearance of this fitting, ensure it is cleaned only using a clean soft damp cloth. A solution of warm water and mild liquid detergent may be used where necessary and then rinsed thoroughly.

Abrasive cleaners or acidic cleaners **MUST NOT BE USED** under any circumstances.

Avoid contact with solvents.

Manufacturer's guarantee

This tap is guaranteed to be free from faults arising from manufacturing defects for a period of 10 Years from the date of purchase.

Retain proof of purchase.

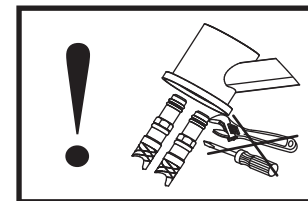
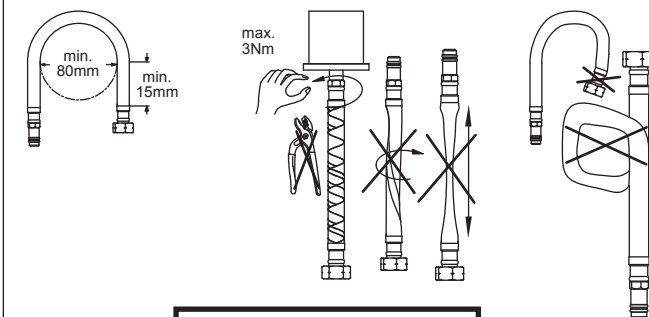
Caution

Contains parts which if these become loose could be a choking hazard to small children. After installation please check that the bar levers into the tap heads and the plug lift rod are secure, if required please use low strength thread lock to secure these parts.

Please pass these instructions back onto householder for retention for future reference.

Do not over bend the flexible hoses.

NOTE!



UK Manufacturer:

Kingfisher International Products Limited,
3 Sheldon Square, London, W2 6PX,
United Kingdom
www.kingfisher.com/products

www.screwfix.com

EU Manufacturer:

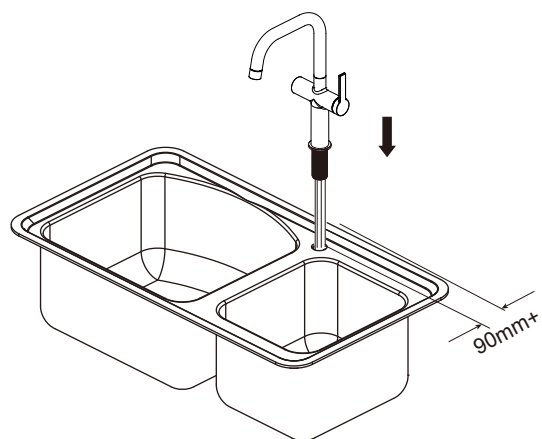
Kingfisher International Products B.V.
Rapenburgerstraat 175E
1011 VM Amsterdam
The Netherlands
www.screwfix.ie

Please retain for future reference.

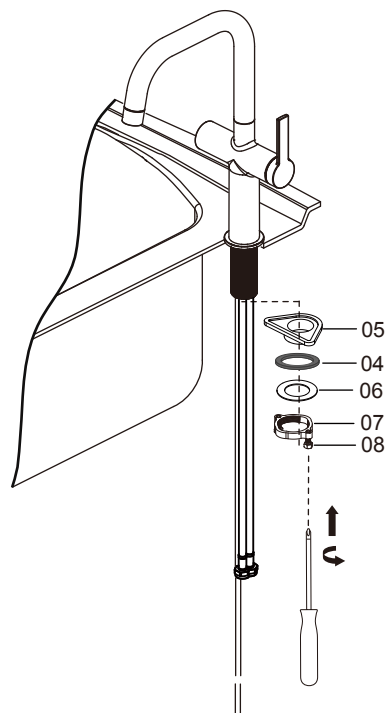
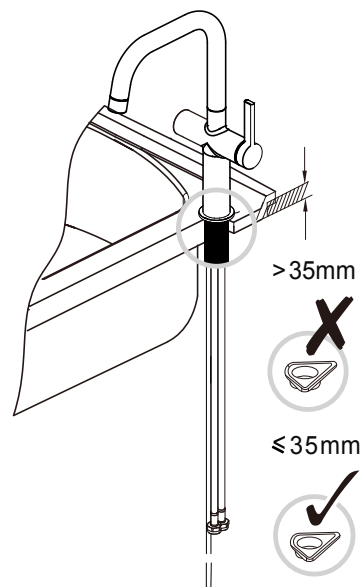
V10621 BX220IM



02



Please check sink thickness before installing.
No. (05) mounting seat is not needed if the
thickness is more than 35mm.



1

57mm

2

3

5-6mm

4

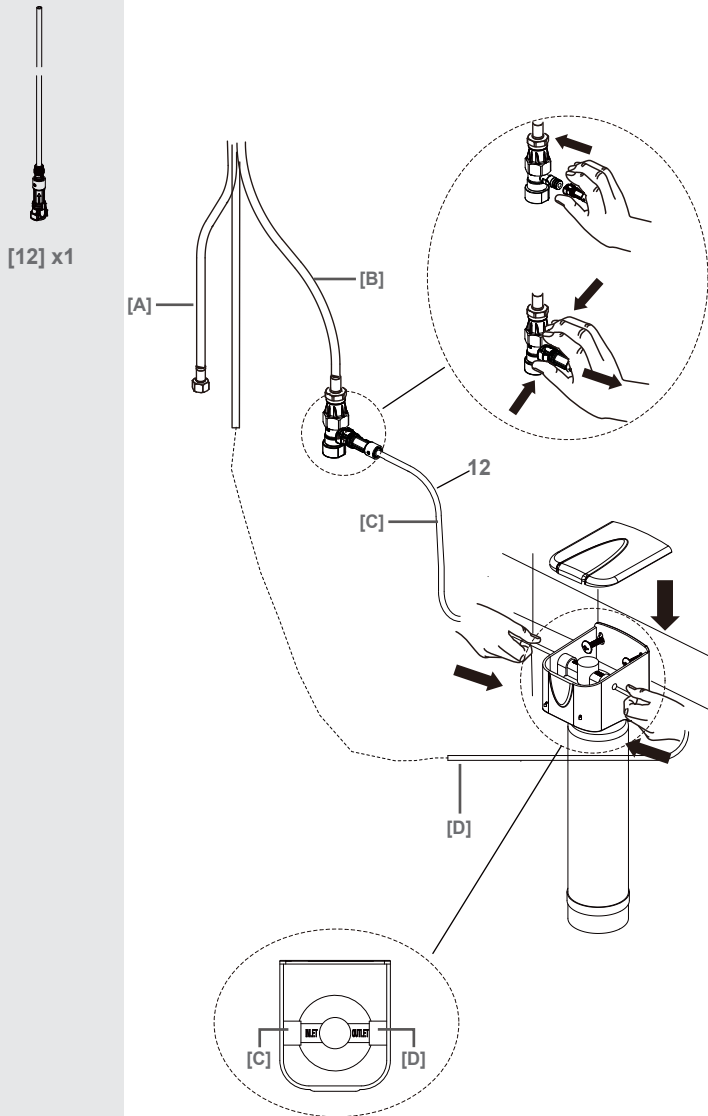
5

13

Not Included

$\varnothing 3.5\text{mm}$

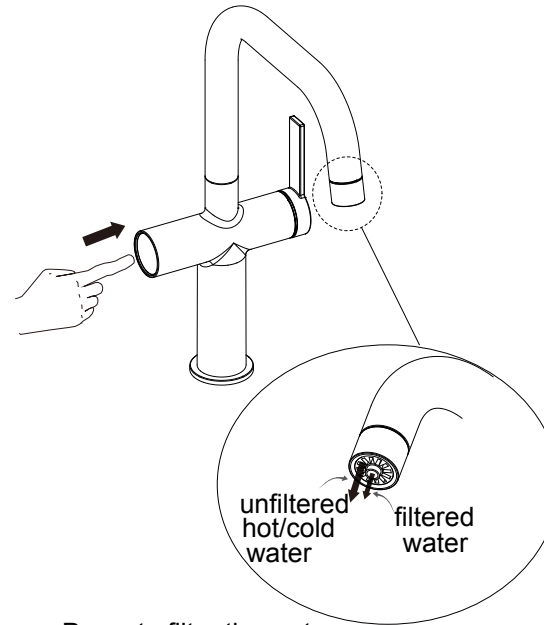
06



A. Hot B. Cold
C. Inlet D. Outlet

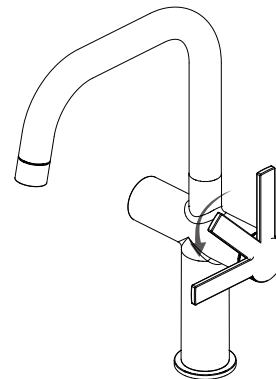
07

Filtration control



Press to filter the water

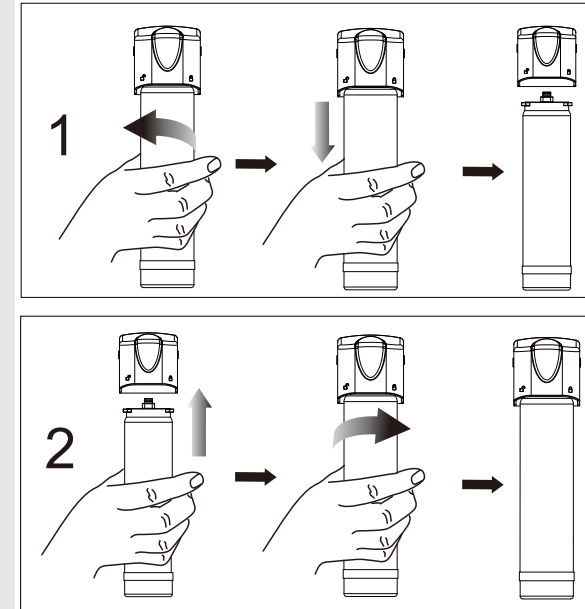
Regular water flow control



1. Pull the handle out to, turn on and to control the flow.
2. Turn it on for cold water, turn forward 45 degrees for mixed water, and forward 90 degrees for hot water.

08

Filter replacement



Replace filter every 6 months!