



20V Cordless Lithium-Ion Tiller

WEV20TIL

1938262001

en - Original Instructions

ASSEMBLY REQUIRED

Battery must be fully charged before use.

Sales & Support: 01793 333212

Before use please read & understand this manual; paying particular attention to the safety instructions before use.

Incorrect use of the product could put the operator or machine in danger.

Whilst every effort has been made to ensure the accuracy of information contained in this manual, our policy of continuous improvement determines the right to make modifications without prior warning.

Images are used for illustration purposes only.



INSTRUCTION MANUAL

21 May 2020

Copyright Notice

Copyright © Handy Distribution

Permission is granted to reproduce this publication for personal & educational use only.
Commercial copying, redistribution, hiring or lending is prohibited.

No part of this publication may be stored in a retrieval system or transmitted in any other form or means without written permission from Handy Distribution.

In all cases this copyright notice must remain intact.

CONTENTS

INTENDED USE

SAFETY INSTRUCTIONS

SPECIFICATION

KNOW YOUR MACHINE

COMPONENTS

ASSEMBLY

BATTERY & CHARGER

OPERATION

MAINTENANCE

TROUBLE SHOOTING

PARTS DIAGRAM & LIST

DECLARATION OF CONFORMITY

WARRANTY



INSTRUCTION MANUAL

INTENDED USE

The basic version of the equipment is a cordless garden tiller intended for private use, i.e. for use in home and gardening environments. It is designed to turn soil and vegetation in small to medium gardens or allotments. The tiller is for private use, whose annual operating time generally does not exceed 25 hours. Public facilities, sporting fields, and agricultural / forestry applications are excluded.

Please read this entire manual prior to operating the equipment. It instructs you how to safely and easily set up, operate and maintain your machine. Please be sure that you, and any other persons who will operate the machine, carefully follow the recommended safety practices, at all times. Failure to do so could result in personal injury or property damage.

TO THE OWNER

All information in this manual is relative to the most recent product information available at the time of printing. Review this manual frequently to familiarise yourself with the machine, its features and operation. Please be aware that this Instruction Manual may cover a range of product specifications for various models. Characteristics and features discussed and/or illustrated in this manual may not be applicable or exact to all models.

We reserve the right to change product specifications, designs and equipment without notice and without incurring obligation. If you have any problems or questions concerning the machine, phone your local authorised service dealer or ourselves. Throughout this manual, all references to *right* and *left* side of the machine are observed from the operating position.















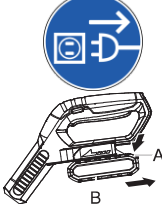






WARNING

For safety reasons, the tiller may not be used as a drive unit for other equipment or toolkits of any kind, unless specifically advised to do so by the manufacturer. The equipment is to be used only for its prescribed purpose. Any other use is deemed to be a case of misuse. The user/operator and not the manufacturer will be liable for any damage or injuries of any kind caused as a result of this.

Please note that our equipment has not been designed for use in commercial, trade or industrial applications. Our warranty will be 90 days from the original date of sale for commercial, trade or industrial businesses or for equivalent purposes.

SAFETY INSTRUCTIONS

Read and understand the owner's manual and labels affixed to the machine. Learn its application and limitations as well as the specific potential hazards. Retain these instructions for future reference. The operator is responsible for following the warnings & instructions in this manual and on the product.

	Read & understand operator's manual before using the machine. Failure to follow instructions could result in death or serious injury. Please keep in a safe place for future reference.		Always wear safety eye and ear protection when operating this machine.
	DANGER Keep all bystanders & animals away from the machine during operation. If approached, stop the machine immediately.	 	Always wear gloves to protect your hands. Wear foot protection or sensible shoes when using the machine
	Keep hands & feet out of the way of all moving parts. Do not place any part of your body or any tool in the tines during operation.		DANGER — THROWN DEBRIS Remove objects that can be thrown by the machine in any direction. Wear safety glasses.
	DANGER – SLOPES Use extra caution on slopes. Do not tiller on slopes greater than 15°.		Noise Level - See label on machine
	No smoking		Do not expose to rain or damp conditions.
	Keep guards in place and in working order. Replace damaged, missing or failed parts before using it.		Do not use near a flame, or sparks
	Remove the electrical plug for charger from the power source or the battery from the tool before undertaking checks, servicing or repairs.		Waste electrical products should not be disposed of with household waste. Please recycle where facilities exist. Check with your Local Authority or retailer for recycling advice.
	CE Marking - the product meets demand and regulations set by the EU		Safety alert symbol. Used to alert you to potential personal injury hazards. Obey all safety messages that follow this symbol to avoid possible injury.
 DANGER	Indicates an imminently hazardous situation which, if not avoided, will result in serious injury	 WARNING	Indicates a potentially hazardous situation which, if not avoided, could result in serious injury
 CAUTION	Indicates a potentially hazardous situation which, if not avoided, may result in minor or moderate injury.	CAUTION	Used without the safety alert symbol indicates a potentially hazardous situation which, if not avoided, may result in property damage.



INSTRUCTION MANUAL

GENERAL SAFETY RULES



WARNING

Before you put the machine into operation, you must read this instruction manual.

When using this machine, observe the following safety instructions to exclude the risk of personal injury or material damage. Please also observe the special safety instructions in the respective chapters. Where applicable, follow the legal directives or regulations for the prevention of accidents in relation to the use of this machine.

When using petrol tools, basic safety precautions, including the following, should always be followed to reduce the risk of serious personal injury and/or damage to the unit.

GENERAL OPERATION

1. Read this instruction manual carefully in its entirety before attempting to assemble this machine. Read, understand, and follow all instructions on the machine and in the manual(s) before operation. Keep this manual in a safe place for future and regular reference and for ordering replacement parts.
2. Be completely familiar with the controls and the proper use of this machine before operating it.
3. This machine is a precision piece of power equipment, not a plaything. Therefore, exercise extreme caution at all times. This machine has been designed to perform one job: to turn soil and vegetation. Do not use it for any other purpose.
4. Never allow children under 16 years of age to operate this machine. Children 16 and over should read and understand the instructions and safe operation practices in this manual and on the machine and should be trained and always supervised by an adult.
5. Only responsible individuals who are familiar with these rules of safe operation should be allowed to use this machine.
6. Thoroughly inspect the area where the equipment is to be used. Remove all stones, sticks, wire, bones, toys and other foreign objects, which could be tripped over or picked up and thrown by the tiller. Thrown objects can cause serious personal injury.
7. Plan your tilling pattern to avoid discharge of material toward roads, pathways, bystanders and the like. Also, avoid discharging material against a wall or obstruction, which may cause discharged material to ricochet back toward the operator.
8. To help avoid tiller contact or a thrown object injury, stay in operator zone behind handles and keep children, bystanders, helpers and pets at least 20 metres from tiller while it is in operation. Stop machine if anyone enters area.
9. Always wear safety glasses or safety goggles during operation and while performing an adjustment or repair to protect your eyes. Thrown objects which ricochet can cause serious injury to the eyes.
10. Wear sturdy, rough-soled work shoes and close-fitting trousers and shirts. Shirts and trousers that cover the arms and legs and steel-toed shoes are recommended. Never operate this machine in bare feet, sandals, slippery or light-weight (e.g. canvas) shoes.
11. Do not put hands or feet near or under rotating parts. Always keep clear of discharge area, as the rotating tines can cause injury.
12. Never operate the tiller without proper shields, guards, trigger or other safety protective devices in place and working.
13. Never operate the tiller with damaged safety devices. Failure to do so, can result in personal injury.
14. Many injuries occur as a result of the tiller being pulled over the foot during a fall caused by slipping or tripping. Do not hold on to the tiller if you are falling; release the handle immediately.
15. Never pull the tiller back towards you while you are walking. If you must back the tiller away from a wall or obstruction, first look down and behind to avoid tripping and then follow these steps:
 - A. Step back from the tiller to fully extend your arms.
 - B. Be sure you are well balanced with sure footing.
 - C. Pull the tiller back slowly, no more than halfway towards you.
 - D. Repeat these steps as needed.
16. Do not operate the tiller while under the influence of alcohol or drugs.

17. The trigger is a safety device. Never attempt to bypass its operation. Doing so makes the safety device inoperative and may result in personal injury through contact with the rotating tines. The trigger must operate easily in both directions and automatically return to the disengaged position when released.
18. Always be sure of your footing. A slip and fall can cause serious personal injury. If you feel you are losing your footing, release the trigger immediately and the tines will stop rotating within immediately.
19. Operate only in daylight or good artificial light. Walk, never run.
20. Stop the tines when crossing gravel drives, paths or roads.
21. If the machine starts to vibrate abnormally, stop the motor and check immediately for the cause. Vibration is generally a warning of trouble.
22. Shut the motor off and wait until the tines comes to a complete stop before cleaning. Never place any part of the body in the tine area until you are sure they have stopped rotating and the battery removed from the handle.
23. Never operate the tiller without proper safety protective devices in place and working. Never operate with damaged safety devices. Failure to do so can result in personal injury.
24. Only use parts and accessories made for this machine by the manufacturer. Failure to do so can result in personal injury.
25. If situations occur which are not covered in this manual, use care and good judgement. Contact your nearest Approved Service Dealer or ourselves for assistance

SLOPE OPERATION

Slopes are a major factor related to slip and fall accidents, which can result in severe injury. Operation on slopes requires extra caution. If you feel uneasy on a slope, do not till on it. If the slope is greater than 15 degrees, do not till on it.

Do:

1. Till across the face of slopes; never up and down. Exercise extreme caution when changing direction on slopes.
2. Watch for holes, ruts, rocks, hidden objects, or bumps which can cause you to slip or trip. Tall grass can hide obstacles.
3. Always be sure of your footing. A slip and fall can cause serious personal injury. If you feel you are losing your balance, release the trigger immediately and the tines will stop rotating immediately.

Do Not:

1. Do not till near drop-offs, ditches or embankments, you could lose your footing or balance.
2. Do not till on slopes greater than 15 degrees.
3. Do not till on saturated soil. Unstable footing could cause slipping.

CHILDREN

Tragic accidents can occur if the operator is not alert to the presence of children. Children are often attracted to the tiller and the tilling activity. They do not understand the dangers. Never assume that children will remain where you last saw them.

1. Keep children out of the tilling area and under care of a responsible adult other than the operator.
2. Be alert and turn the tiller off if a child enters the area.
3. Before and while moving backwards, look behind and down for small children.
4. Use extreme care when approaching blind corners, doorways, shrubs, trees, or other objects that may obscure your vision of a child who may run into the tiller.
5. Never allow children under 16 years of age to operate this machine. Children 16 and over should read and understand the instructions and safe operation practices in this manual and on the machine and be trained and supervised by an adult.

SERVICE

Electrical/Battery safety:

1. The mains voltage must correspond to the one marked on the technical data plate (230V-50Hz). Do not use any other source of power when charging your battery.
2. Only use batteries supplied by the manufacturer at all times.
3. Do NOT use the machine in the rain and do NOT leave it outside overnight. Try to prevent it getting wet or being exposed to humidity. Check the power cable regularly to ensure it is not damaged.
4. Allow the machine and battery to cool down for 5 minutes, prior to storing.



INSTRUCTION MANUAL

General Service:

1. Before cleaning, repairing, or inspecting, make certain the tines and all moving parts have stopped. Disconnect the battery to prevent unintended starting.
2. Check the tines and bolts at frequent intervals for proper tightness. Also, visually inspect tines for damage. Replace with the original equipment manufacture's (O.E.M.) parts only, listed in this manual. "Use of parts which do not meet the original equipment specifications may lead to improper performance and compromise safety!"
3. Keep all nuts, bolts, and screws tight to be sure the equipment is in safe working condition.
4. Never tamper with safety devices. Check the correct operation regularly.
5. After striking a foreign object, stop the motor, disconnect the battery. Thoroughly inspect the tiller for any damage. Repair the damage before starting and operating the tiller.
6. Tiller components, guards and shields are subject to wear and damage which could expose moving parts or allow objects to be thrown. For safety protection, frequently check components and replace immediately with original equipment manufacturers (O.E.M.) parts only, listed in this manual. "Use of parts which do not meet the original equipment specifications may lead to improper performance and compromise safety!"
7. Maintain or replace safety and instruction labels, as necessary.
8. Observe proper disposal laws and regulations. Improper disposal of fluids and materials can harm the environment.

DO NOT MODIFY THE MOTOR

To avoid serious injury or death, do not modify the motor in any way. Tampering with the motor could cause it to operate at unsafe speeds. Never tamper with factory settings.

PERSONAL SAFETY

1. This machine is not intended for use by persons (including children) with reduced physical, sensory or mental capabilities, or lack of experience and knowledge, unless they have been given supervision or instruction concerning use of the machine by a person responsible for their safety.
2. Children should be supervised to ensure that they do not use or play with the machine.
3. Stay alert, watch what you are doing and use common sense when operating this machine.
4. Do not use this machine while you are tired, ill or under the influence of drugs, alcohol, or medication. A moment of inattention while operating this machine can cause you to lose control & may result in series personal injury.
5. Use safety equipment. Always wear eye protection. Safety equipment such as a dust mask, non-skid safety shoes, hard hat, or hearing protection used for appropriate condition will reduce personal injuries.
6. Dress properly. Do not wear loose clothing or jewellery. Keep your hair, clothing & gloves away from moving parts. Loose clothes, jewellery or long hair can be caught in moving parts.
7. Prolonged use of the machine may lead to disorders of blood circulation in hands caused by vibration. These effects can be worsened by low ambient temperatures and/or by gripping the handgrips excessively tightly. Period of use you can extend with appropriate gloves or regular breaks. Take frequent work breaks. Limit the amount of exposure per day.



WARNING

Keep hands away from moving parts. Tines do not stop immediately after the tiller is turned off. Do not put hands, feet or any body part or clothing near the rotating tines.

The tiller may bounce upward and/or jump forward if the tines strike extremely hard packed soil, frozen ground, or buried obstacles such as large stones, roots or stumps.



DANGER

Wear gloves and use caution when cleaning or performing maintenance on the tiller.

SPECIFICATIONS

Model	WEV20TIL
Product Number	1938262001
Voltage	20v max
Battery	2.0Ah
Charging Time	Up to 90 mins
Run Time	Up to 30 mins
Idle Speed	160rpm
Working Width	19cm
Max. Working Depth	15.5cm
Protection	IPX1
Sound Power Level L _{WA} :	93 dB(A)
Weight	4.36kg

The manufacturer reserves the right to change the product specification and livery according to continued product improvements.

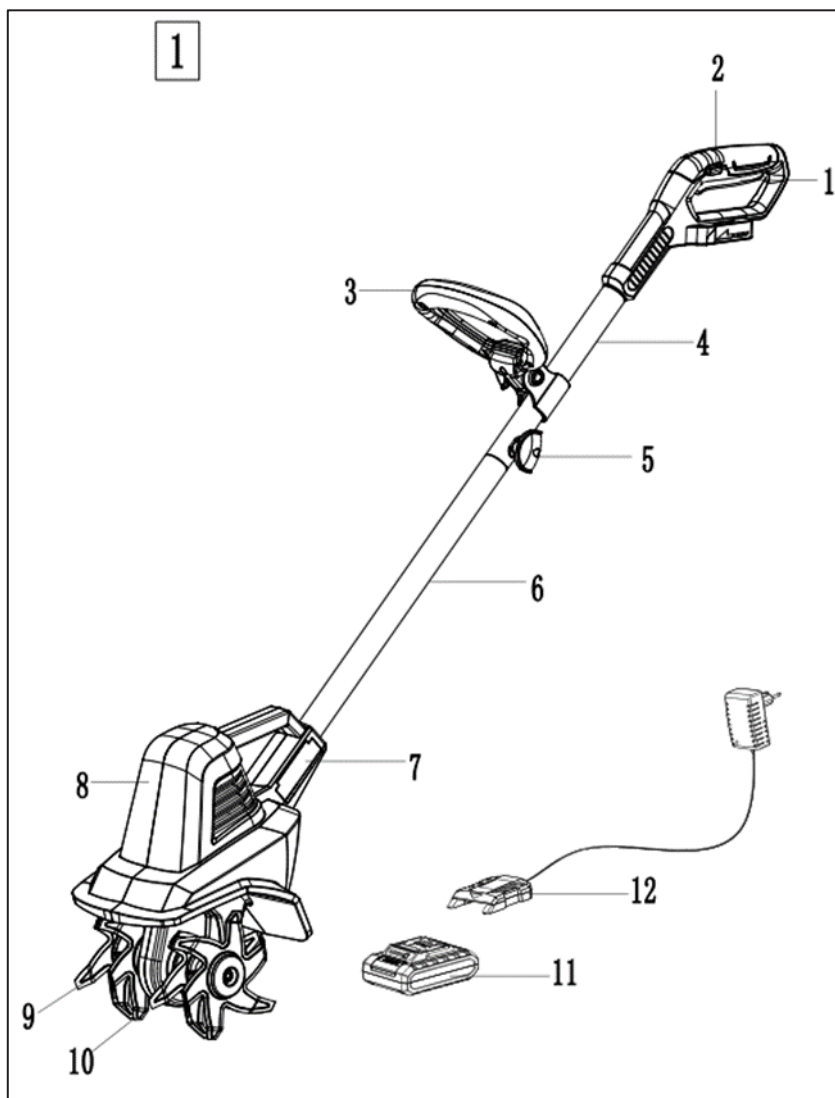




INSTRUCTION MANUAL

KNOW YOUR MACHINE

1.	Trigger	2.	Safety Button
3.	Front Handle	4.	Upper Shaft
5.	Wing Nut Fixing	6.	Lower Shaft
7.	Side Cover	8.	Motor Housing
9.	Tine 1 (Right)	10.	Tine 2 (Left)
11.	18v 2Ah Battery	12.	Battery Charger



COMPONENTS

This product must be assembled correctly before use.

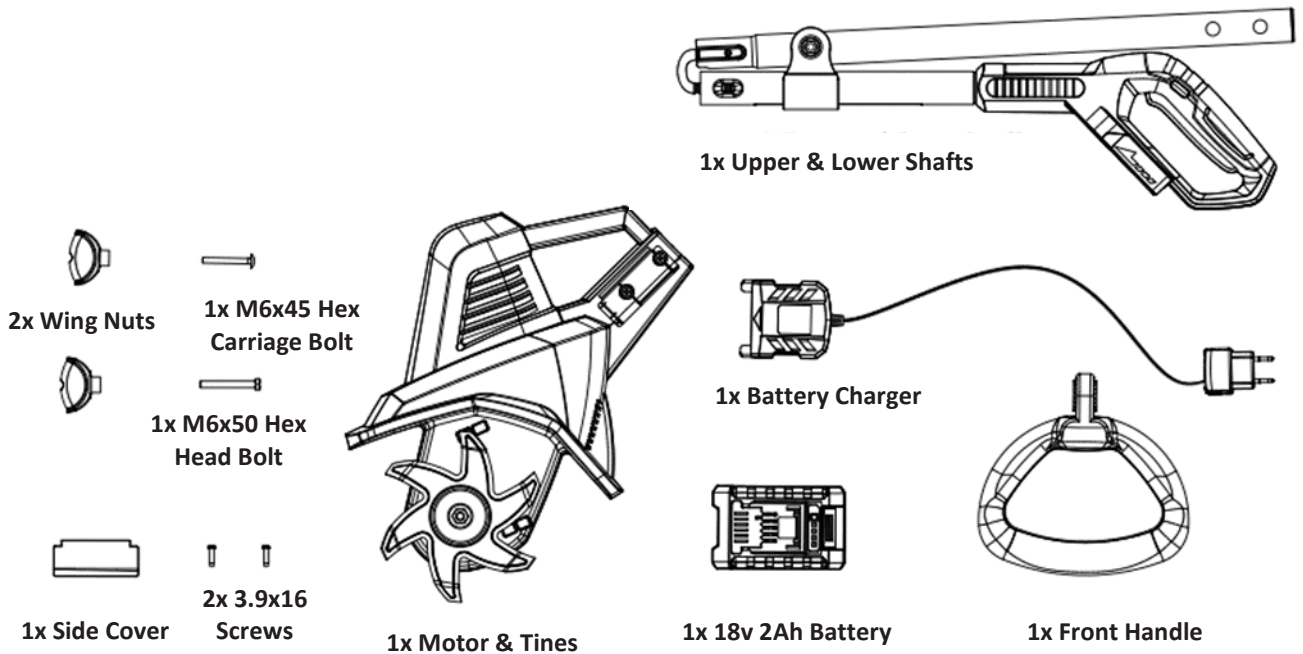
Carefully remove the product and any accessories from the carton. Make sure all items listed below are included.

If you require assistance with regards to the contents or operation of the machine, please contact us:

TEL: 01793 333212

EMAIL: customerservice@handydistribution.co.uk

(MON – FRI 8.00AM TO 5.30PM EXCL. BANK HOLIDAYS)



Inspect the product carefully to make sure there are no breakages or damage occurred during shipping.

Do not discard the packing material and carton until you have carefully inspected and satisfactorily operated the product.



WARNING

If any parts are damaged or missing do not operate this product until the parts are replaced. Failure to heed this warning could result in serious personal injury.

Do not attempt to modify this product or create accessories not recommended for use with this product. Any such alteration or modification is misuse and could result in a hazardous condition leading to possible serious personal injury.

Do not connect to power supply until assembly is complete. Failure to comply could result in accidental starting and possible serious personal injury.



INSTRUCTION MANUAL

ASSEMBLY

Remove the machine and contents from the carton. Be sure the carton is empty before discarding.

If you require assistance with regards to the contents or operation of the machine, please contact us:

Tel: 01793 333212 - Email: customerservice@webbgardenpower.co.uk

Opening hours weekdays: February to October 8:30am - 5:30pm / November to January 8:30am - 5:00pm
(Closed Bank Holidays)

UPPER & LOWER SHAFT (FIG. 3A)

Slide the lower handle section into the upper handle section.

Line up the holes on each tube, and make sure the cable is clear of the mounting holes. Secure the two sections together with the M6x45 carriage bolt and wing nut.

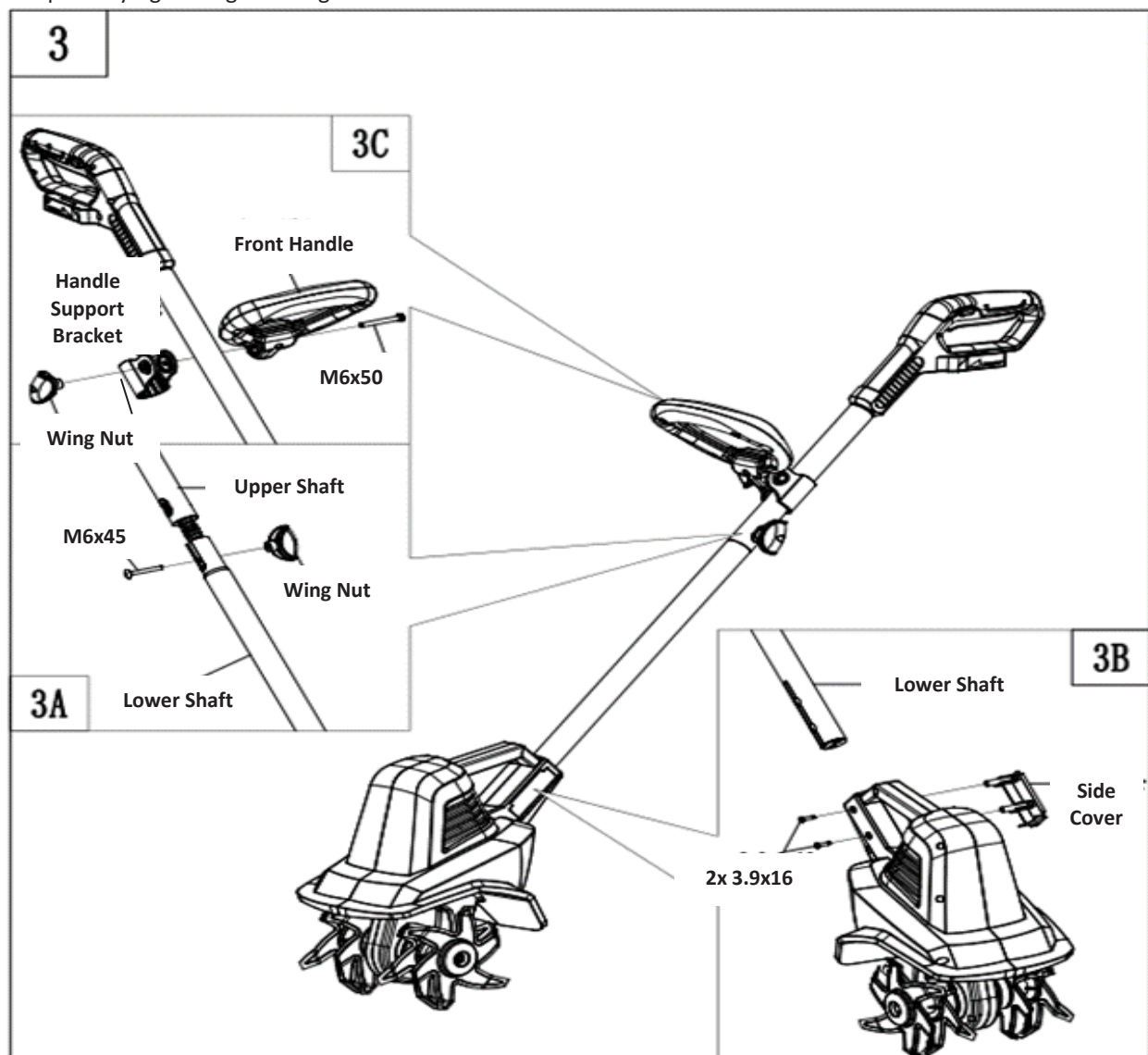
LOWER SHAFT AND MOTOR (FIG. 3B)

Align the notch on the lower handle with the rib on the tilling head and push the lower handle into the tilling head. Align the side cover with the holes on the lower handle shaft and push the cover into place. Secure with the two ST3.9x16 screws.

AUXILIARY HANDLE (Fig. 3C)

Position the auxiliary handle so that the holes are in alignment with the holes in the handle support bracket. Insert the M6X50 hex head bolt into the hex shaped bolt hole of the bracket. Secure by tightening the wing nut onto the bolt.

Loosen the wing nut and adjust the angle and height of the handle to a safe and comfortable position. Secure into place by tightening the wing nut onto the bolt





WARNING

DO NOT attempt to start this machine without it first being FULLY assembled.

When connecting the tilling head and lower handle using the two self-tapping screws supplied, make sure the screws are securely tightened. Screw heads should be recessed below the surface.

DO NOT START THE UNIT UNTIL TILLING HEAD AND LOWER HANDLE ARE SECURELY CONNECTED.

BATTERY INSTALLATION & REMOVAL

Hold the tool and the battery carriage firmly when installing or removing battery cartridge.

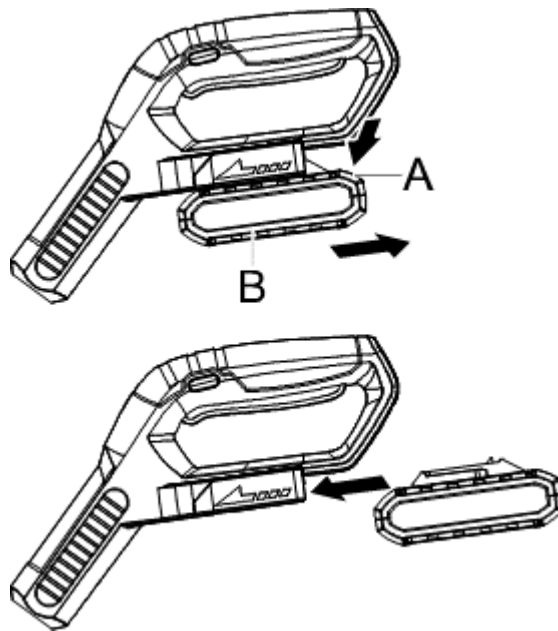
Failure to hold the tool and the battery carriage firmly may cause them to slip off your hands and result in damage to the tool and battery cartridge and a personal injury.

TO REMOVE

Depress release button (A) on the back of battery cartridge (B) to release the battery. Pull the battery cartridge out of tool.

TO INSTALL

Align the battery with the cavity in the handle. Insert the battery into the handle until the battery release button locks into place. You should hear a “click” once the battery is installed. Note: The battery can only be installed one way.





INSTRUCTION MANUAL

BATTERY & CHARGER

By pressing the button on the battery, the LED display will show the battery capacity.

LED LIGHTS	BATTERY STATUS
LED x4	Battery is 75-100% charged
LED x3	Battery is 50-75% charged
LED x2	Battery is 25-50% charged
LED x1	Battery is 0-25% charged

BATTERY CHARGER

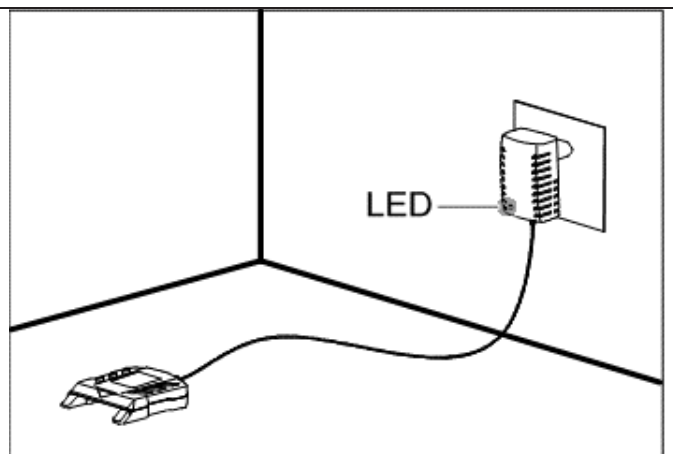


WARNING

Risk of electric shock and short circuiting. Use approved and intact wall sockets. Make sure that the cable is not damaged. Replace cable if it appears to be damaged in any way

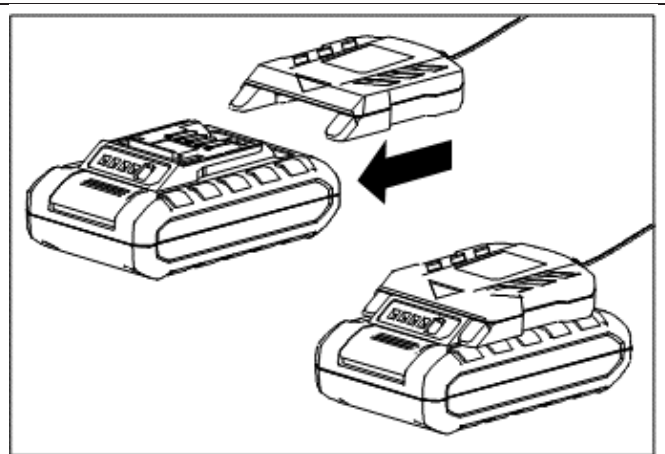
CONNECTING CHARGER TO POWER SOURCE

Connect the battery charger to the voltage and frequency specified in this manual and on the rating plate. Put the electric plug in an earthed socket-outlet. The LED on the battery charger lights up green.



CONNECTING CHARGER TO BATTERY

- The battery must be charged before using it the first time.
- Install charger on the top of battery and push until the charger connects firmly with the battery.
- The LED will turn RED on the charger, when the battery is connected to the battery charger.
- When the LED on the charger turns to GREEN, the battery is fully charged.
- Disconnect the power plug. Never pull the power cable of the charger to disconnect it from the wall socket.
- Remove battery from battery charger.



NOTE:

Lithium-ion batteries can be charged at whatever charging level. The charging process can be cancelled or started whatever the battery's charge level is.

OPERATION

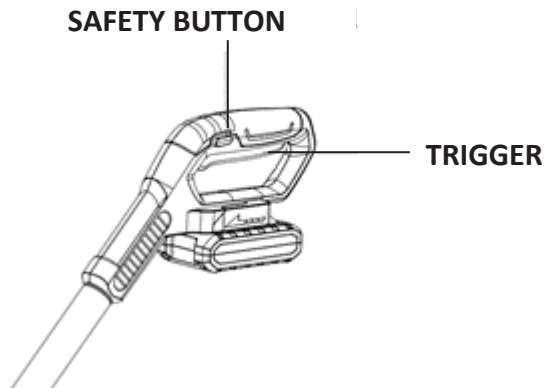
THE BATTERY MUST BE FULLY CHARGED BEFORE THE FIRST USE OF THE PRODUCT. SEE STARTING & STOPPING



WARNING

The tines start rotating immediately after the tiller is switched on. Keep hands and feet away from the tines.

1. To switch ON, hold the tiller firmly with two hands. One hand should be placed on the top trigger handle, with your other hand firmly holding the front handle. Always ensure the tines are not touching any surface when starting the machine.
2. Press the safety button, then squeeze the trigger. The tines will then rotate. Once the tiller has started, you can release the safety button, whilst still holding the trigger.
3. To switch OFF, simply release the trigger.



USAGE

Before use, remove any visible stones or other foreign bodies from the area.

Use the tiller for breaking sod, preparing seed beds and for cultivating gardens and flower beds. The tiller can also dig small holes for planting saplings or potted plants.

For breaking sod or deep tilling, allow the tines to pull the tiller forward to the end of your arm's reach, then firmly pull it back toward yourself. You will achieve the best results by repeatedly allowing it to move forward and pulling it back. By pulling the tiller back towards yourself, the tines will dig deeper and more aggressively.



WARNING

To prevent tripping, take extra precautions when moving backwards and when pulling the tiller back towards yourself.

If the tiller digs deep enough to stay in one spot, gently rock it side to side until it starts moving forward again.

When working on inclines, always stand diagonally to the incline to retain a firm, safe footing. Do not work on extremely steep slopes.

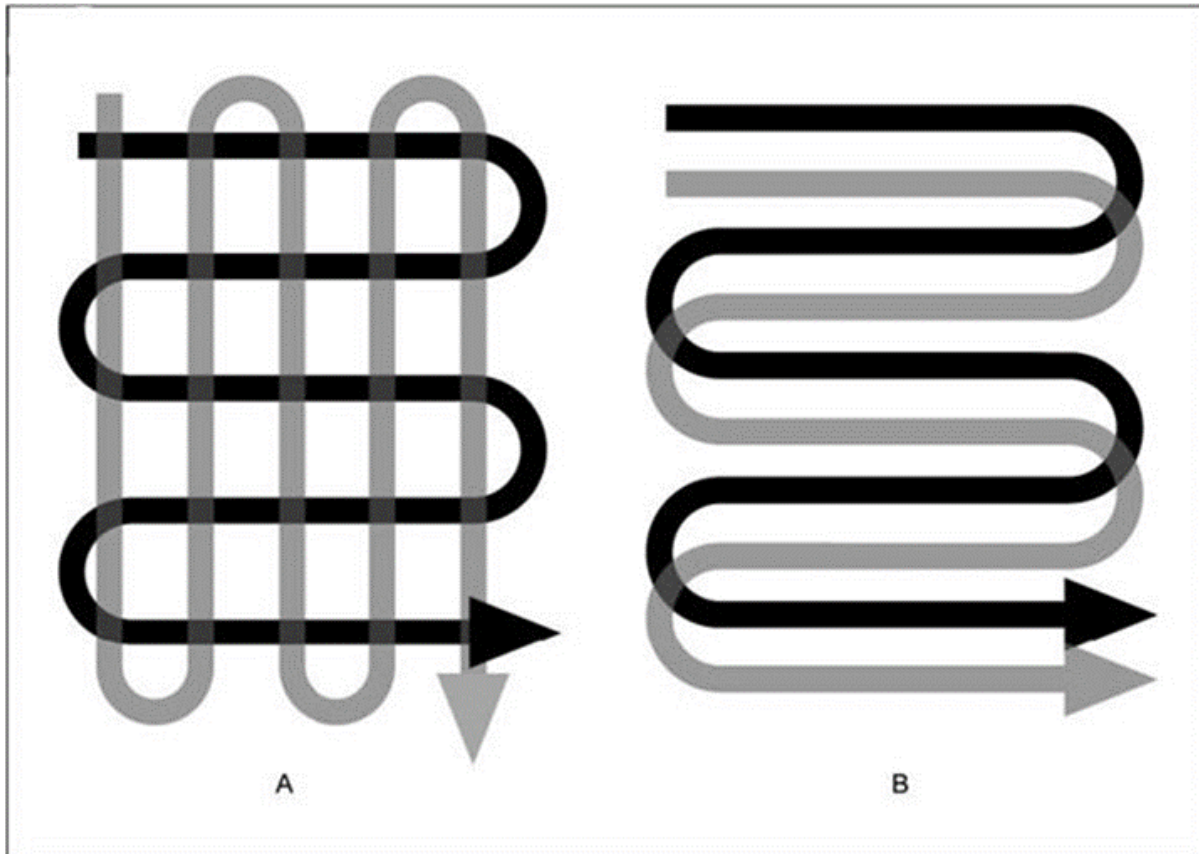


INSTRUCTION MANUAL

For preparing seed beds, we recommend using one of these tilling patterns:

Tilling Pattern A – Make two passes over area to be tilled, the second at a right angle to the first.

Tilling Pattern B – Make two passes over area to be tilled, the second overlapping the first.



Clearing foreign objects:

During operation, a stone or root could become lodged in the tines, or tall grass or weeds may become wrapped around the tine shaft. To clear the tines or tine shaft release the trigger lever, wait for the tines to come to a complete stop and remove the battery from the tiller. Dislodge or remove the foreign matter from the tines or tine shaft. To simplify removal of tall grass or weeds from the tine shaft, remove one or more of the tines. See Tine Removal and Installation.



CAUTION

Before moving the tiller from one area to another, switch off the motor, wait for the tines to come to a complete stop and remove the battery. Be careful not to let the tines touch the ground while moving the tiller. The tines as well as the unit itself may be damaged even if the motor is switched off.

BATTERY & CHARGER

By pressing the button on the battery, the LED display will show the battery capacity.

LED LIGHTS	BATTERY STATUS
LED x4	Battery is 75-100% charged
LED x3	Battery is 50-75% charged
LED x2	Battery is 25-50% charged
LED x1	Battery is 0-25% charged

BATTERY CHARGER

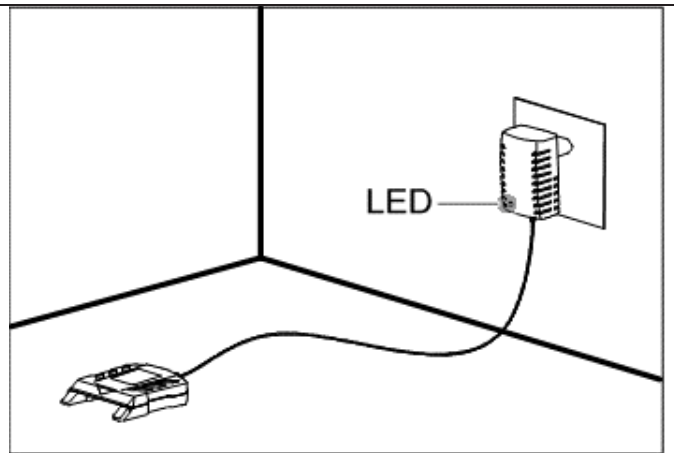


WARNING

Risk of electric shock and short circuiting. Use approved and intact wall sockets. Make sure that the cable is not damaged. Replace cable if it appears to be damaged in any way

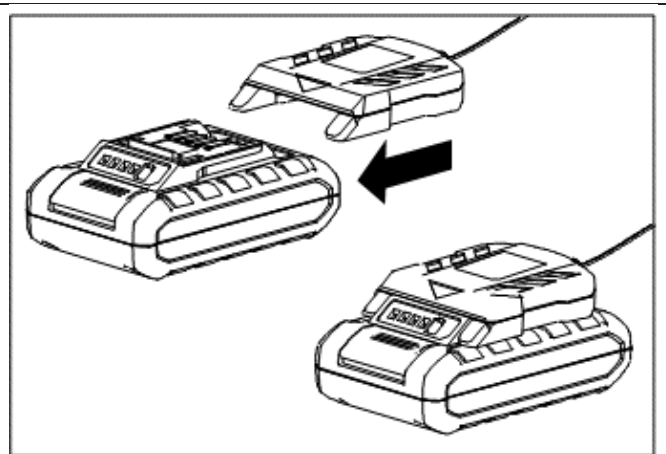
CONNECTING CHARGER TO POWER SOURCE

Connect the battery charger to the voltage and frequency specified in this manual and on the rating plate. Put the electric plug in an earthed socket-outlet. The LED on the battery charger lights up green.



CONNECTING CHARGER TO BATTERY

- The battery must be charged before using it the first time.
- Install charger on the top of battery and push until the charger connects firmly with the battery.
- The LED will turn RED on the charger, when the battery is connected to the battery charger.
- When the LED on the charger turns to GREEN, the battery is fully charged.
- Disconnect the power plug. Never pull the power cable of the charger to disconnect it from the wall socket.
- Remove battery from battery charger.



NOTE:

Lithium-ion batteries can be charged at whatever charging level. The charging process can be cancelled or started whatever the battery's charge level is.



INSTRUCTION MANUAL

MAINTENANCE



WARNING

Before carrying out maintenance operations, disconnect power supply (Remove Battery).

Before each use of the charger, check the cable for signs of damage or ageing. Replace the cable if it is cracked, split or otherwise damaged. Check the condition of the tines and ensure that all threaded connections are securely tightened. If the tines become dull or blunt, sharpen or replace them. Call 01793 333212 for assistance.

At the end of the season, check the tiller for damage prior to storing. Repair or replace damaged or broken parts.



CAUTION

Always clean the tiller after each use. Failure to carry out proper cleaning can result in damage to the tiller or result in poor performance.

To remove soil and debris from the tines, use a stiff brush or a soft cloth dampened with a mild soap and water mixture. **Never use a water hose or pressure washer to clean the tiller!**

Clean the vents on the motor housing removing any remaining grass or dirt with a soft bristled brush. **Never use water!** Once cleaned, wipe the tines dry and apply a light coat of oil to prevent rust.



WARNING

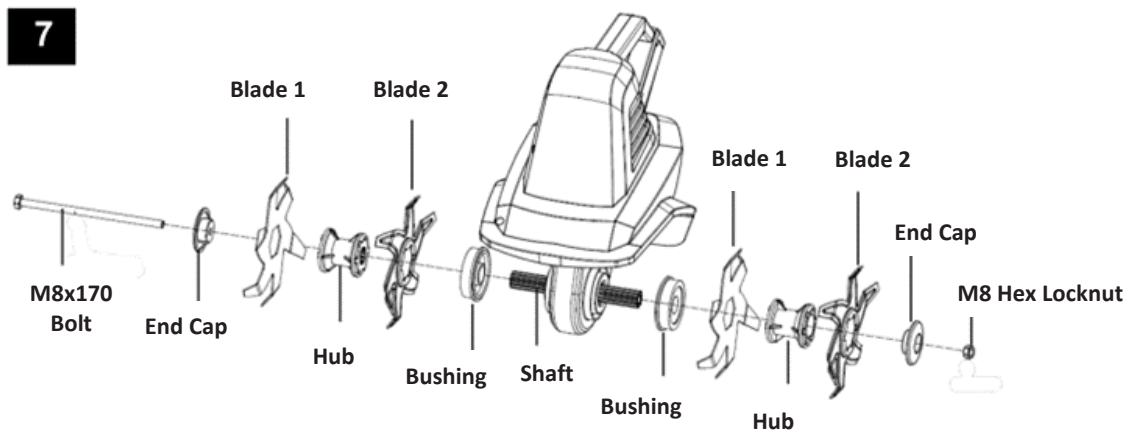
Injury can occur while working on the tines. Wear protective gloves.

Worn tines invite poor performance and overload of the motor. Check tines before each use. Sharpen or replace the tine assemblies with new ones when necessary. Call 01793 333212 for assistance.

Replace only the tines with the identical part number.

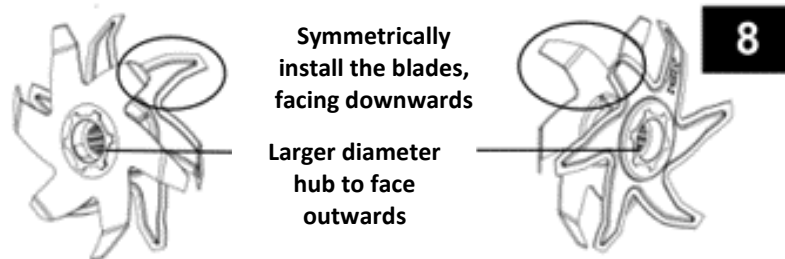
TINE REMOVAL

1. Remove the M8 hex locknut with a hex head wrench, and then remove the M8x170 bolt.
2. Remove the end caps.
3. Remove the tines and hubs at either end of the shaft.



TINE INSTALLATION

1. Install the new tine by pressing it onto the hub. The side with stamped part number must face outward. Be sure to install tines in the same sequence as shown in Fig 7. Position the hub so that the larger diameter whole is facing outward. Make sure the two tines on the same hub are installed symmetrically with the end of the tine blades facing downward (Fig. 8).
2. Install the tines with hub onto the shaft. Ensure the larger diameter whole of the hub is facing outward. The left and right tine assemblies must be installed symmetrically (Fig. 8).
3. Install the end caps.
4. Install the M8x170 bolt. Secure the assembly by tightening the M8 hex locknut with a hex head wrench.
5. Replace worn or damaged parts with original replacement parts only. Parts from another tiller may not fit properly causing an unsafe situation.
6. Make sure all protective devices are secure and in good condition. Repair or replace if necessary.



STORAGE

Store the tiller in a dry, clean area out of reach of children.

During extended periods of storage, ensure that the tiller is protected against corrosion and frost.

Winter storage - Fully recharge before storage and then again, every 90 days.

At the end of the season, or if the tiller is not being used for longer than a month, wipe over all metal surfaces with an oil impregnated cloth to protect them from corrosion or spray with a fine coat of oil.

Remove the battery from the tiller. Cover the terminals with heavy duty adhesive tape. Do not attempt to destroy or disassemble the battery or remove any components. This product contains lithium-ion batteries which must be recycled or disposed of properly.



INSTRUCTION MANUAL

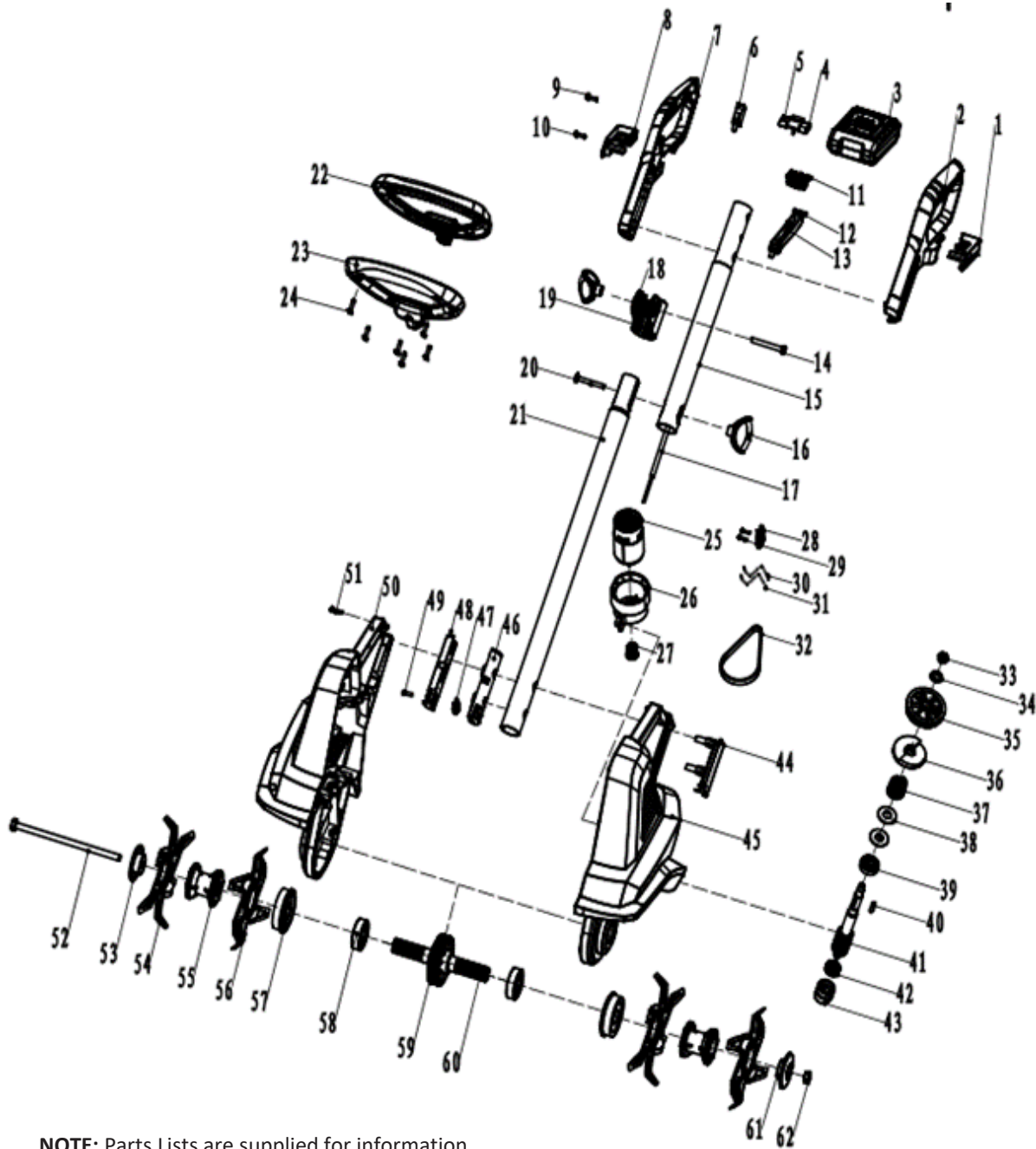
TROUBLE SHOOTING

PROBLEM	POSSIBLE CAUSE	SOLUTION
Motor does not start	Safety lock button not fully depressed	Check that safety lock button on handle is fully depressed before pulling the trigger.
	Battery not installed properly	Check battery installation.
	Battery has low charge	Charge the battery.
	Battery is either defective or will not take a charge.	Replace the battery
	Overheat protection activated	<ol style="list-style-type: none">1. Working depth too large, set to a shorter depth.2. Tines blocked, remove the blockage.3. Soil too hard, select correct work depth & move forward and backward several times while slowing down the operation speed.4. Wait until the motor cools down for about 15 minutes before further use.
Abnormal noise	Tines are jammed	Switch off. Wait till tines come to a complete stop and remove battery. Remove jammed material.
	Lubrication running out	Tiller must be repaired. Contact local approved service dealer for assistance.
	Bolts, nuts or other components are loose.	Tighten all components. Arrange for repair if noise continues.
Abnormal vibration	Blades damaged or worn	Replace damaged or worn blades
	Working depth too large	Set to correct working depth
Poor results	Working depth too small	Set to correct working depth
	Worn blades	Replace damaged or worn blades.



INSTRUCTION MANUAL

PARTS DIAGRAM – WEV20TIL (1938262001)



NOTE: Parts Lists are supplied for information purposes only, not all parts are stocked individually & we recommend you contact our Spares Team on 01793 333212 for expert advice.

PARTS LIST – WEV20TIL (1938262001)

NO.	HANDY PART NO.	DESCRIPTION	QTY
1	TH250-181018012200	Left Adapter	1
2	WE181-182018201200	Left Handle	1
3	WEV20B2	20v 2Ah Battery	1
4	WE181-182018204200	Safety Button	1
5	TH250-232018212020	Safety Button Spring	1
6	TH250-152018215000	Micro-Switch	1
7	WE181-182018202200	Right Handle	1
8	TH250-181018011200	Right Adapter	1
9	TH250-120427163514	Screw ST3.5x14	7
10	TH250-120427163519	Screw ST3.5x19	1
11	TH250-182838287200	Plug-In Seat	1
12	WE181-182018203200	Trigger	1
13	TH250-231018011020	Trigger Spring	1
14	TH250-120419120650	Hex Bolt	1
15	TH250-230821201000	Upper Shaft	1
16	WE181-282201237200	Wing Nut Fixing	2
17	TH250-162021205000	Spring Line	1
18	TH250-182201236210	Clamp	1
19	TH250-194020306300	Clamp Cushion	1
20	TH250-120418120645	Screw	1
21	TH250-202818202000	Lower Shaft	1
22	WE181-182201233200	Front Handle Top	1
23	TH250-182201235200	Front Handle Bottom	1
24	TH250-120421163914	Screw ST3.9x16	6
25	TH250-172818242000	20v Motor	1
26	TH250-182818241000	Motor Mount	1
27	TH250-222818241000	Small Pulley	1
28	TH250-182818242000	Plug Spring Seat	1
29	TH250-120426263012	Screw ST3.0*12	2
30	TH250-192811290000	Internal Wire (0.29mm)	1
31	TH250-161117000000	Internal Wire (0.20mm)	1
32	TH250-121343080252	Belt (252-3M-8)	1
33	TH250-120330020800	Hex Lock Nut M8	1
34	TH250-120210020815	Flat Washers	1
35	TH250-182201284010	Large Pulley	1
36	TH250-212201283000	Cam	1
37	TH250-232204281010	Spring	1
38	TH250-122203021228	Flat Washer	1
39	TH250-120101122808	Bearing (6001-2Z)	1
40	TH250-120701000418	Flat Key	1

NO.	HANDY PART NO.	DESCRIPTION	QTY
41	TH250-202818101000	Worm	1
42	TH250-120101082208	Deep Groove Ball Bearings 608	1
43	TH250-182818224000	608 Bearing Housing	1
44	WE181-182818223000	Case Cover	1
45	WE181-182818221000	Left Motor Housing	1
46	TH250-182818206000	Pin Holder	1
47	TH250-202203201000	Female Insert	2
48	TH250-182818207000	Pin Cover	1
49	TH250-120421223014	Screw ST3x14	1
50	WE181-182818222000	Right Motor Housing	1
51	TH250-120421163916	Screw ST3.0x16	15
52	TH250-202201013020	Hex Bolt	1
53	TH250-182201016310	Right Tine Cover	1
54	TH250-202201010010	Blade 2	2
55	TH250-182201008310	Spline Bushing	1
56	TH250-202201009010	Blade 1	2
57	TH250-182201011310	Positioning Sleeve	2
58	TH250-120101204212	Bearing 6004-2Z	2
59	TH250-182201003010	Worm Gear	1
60	TH250-182201300010	Spline Shaft Assembly	1
61	TH250-182201012310	Left Tine Cover	1
62	TH250-120330020800	Hex Lock Nut M8	1
63	WEV20C	20v Charger	1



INSTRUCTION MANUAL



REPLACEMENT PARTS

Please find on the following pages, parts lists and drawings for your machine. Should you require a replacement part, please call our Spares Team on 01793 333212, option 1 for assistance.

Webb recommends the use of Handy Parts oils, fuel additives, nylon lines pre-packed parts for all our machines.





EC DECLARATION OF CONFORMITY

We Handy Distribution Ltd - SN3 5HY (Importer) declare that the product:

Designation: 20v Cordless Lithium-Ion Tiller
Model(s): WEV20TIL
Product No.: 1938262001
Type/Serial No. As per rating label on machine
Idle Speed: 160rpm
Protection: IPX1
Max Voltage: 20v d.c
Battery: 2Ah

Complies with the following directives:

Machinery Directive 2006/42/EC

Noise Directive 2000/14/EC

Sound Pressure & Power Levels:

Measured: L_{PA} 61.5 dB(A), L_{WA} 77.97 dB(A)

Declared: L_{PA} 62 dB(A), (KPA 3 dB(A)), L_{WA} 93 dB(A)

Vibration Level:

Measured: 2.29 m/s^2 (K=1.5 m/s^2)

Declared: 3.0 m/s^2 (K=1.5 m/s^2)

Standards and technical specifications referred to:

EN 60335*-1:2012+A11:2014+A13:2017, EN 709:1997+A4:2009, EN 62233:2008, EN 709:1997+A4:09

Notified Body:

Intertek Testing Services Hangzhou

Addresses:

16 No. 1 Ave., Xiasha Economic Development District, Hangzhou 3110018, China

Authorised signatory and technical file holder

Date: 20/05/2020

Signature:

A handwritten signature in black ink, appearing to read "S Belcher", written over a horizontal line.

Name: Mr Simon Belcher

Position: Chairman

Company: Handy Distribution Ltd

Address: Murdock Rd, Swindon, Wiltshire, SN3 5HY.





INSTRUCTION MANUAL

This Service Book is provided with your Webb, to help you look after your purchase to our recommendations and enable you to take advantage of the conditional manufacturer domestic warranty*.

Present this service book to your authorised Webb repair dealer, whenever a service or a warranty appraisal is required.

The booklet is applicable to the following products, in the UK only:

- Ride On Lawn Tractors
- Cylinder Lawnmowers
- Petrol Rotary Lawnmowers
- Petrol Hand Held Range

Please register your machine using the following pages or at www.webbgardenpower.co.uk. By registering your machine, you agree to maintain the machine in accordance with the service schedules specified in this manual and services duly recorded. (Not applicable for Webb electric handheld machines). You may be asked to produce this booklet as proof of servicing in the event of a claim. Proof of purchase should also be kept as a reference.

Ensure you have the following information available from your machine product label. The two examples below can be found on your machine:



1. Model Number

2. Serial & Product Number

Please complete using BLOCK CAPITALS.
Sections marked* must be completed to validate Warranty.

SERVICE BOOK

1. Users Statement of Warranty

Each new machine is warranted against defective material or assembly of material under normal usage. The warranty applies to the original purchaser, is not transferable and covers faulty parts and the labour involved in replacing and repairing those parts, which are of original manufacture.

2. Period of Warranty - valid from 1 January 2020

Webb (excludes Dynamic, Legacy & Heritage), 2 year conditional warranty from the original date of sale to the first domestic user.

Webb (Dynamic, Legacy & Heritage) 1 year warranty from the original date of sale to the first domestic user.

90 days from the original date of sale to the professional/commercial or for hire user.

Engine warranty as per the engine manufacturer's warranty, which will be supplied with the machine.

90 days from the original date of sale for Replacement Spare Parts

All machines' must be serviced within the first 14 months from the original date of purchase, to qualify for a second year parts & labour warranty, details of the service must be recorded in the service record within this manual.

A reduced warranty period of 90 days applies to those items which are subject to normal wear and tear and in normal use, will need replacement or adjustment.

These items are chargeable after 90 days of ownership.

Filters
Tyres / Wheels
Drive chains and belts
Brake & clutch friction components
Control cable & starter cords
Fluids & lubricants
Spark plugs
Blades (Lawnmowers & Brushcutters)
Cutter bars (Hedgecutters)
Drive & clutch cable surfaces
Nylon Lines (Line Trimmers)
Carburettor cleaning
Bearings
Bushes
Electric cable
Grass collectors

3. Not covered by this warranty

(a) The warranty policy does not cover any depreciation or damages caused by ordinary wear, rusting or corrosion, lack of correct maintenance or operation, misuse, abuse, lack of transportation or accident.

(b) The warranty policy does not cover any costs necessary for the standard periodic maintenance services instructed by the operators manual, or service parts replacement which would include oil, filters, tyres, belts, brake linings, fuses, blades, seals and other service parts unless it can be proven that the item has evidence of faulty manufacture.

(c) The warranty policy will not cover failure or damage caused as a result of parts or accessories being modified without the written approval of GJ Handy & Co Ltd.

(d) The warranty policy will not cover the unit if non-genuine parts have been fitted and as a result damage has occurred to the unit.

(e) The warranty policy is non-transferable and is only applicable to the original purchaser.

4. Disclaimer

(a) This warranty is only a remedy for defect of products. GJ Handy & Co Ltd will never warranty in terms of the merchantability or the fitness for a particular purpose.

(b) No person is authorised to make any warranties, representations or promises, expressed or implied, on behalf of GJ Handy & Co Ltd, or to modify the terms conditions or limitation of this warranty policy in any way.



INSTRUCTION MANUAL

(c) Neither GJ Handy & Co Ltd nor any company affiliated with GJ Handy & Co Ltd shall be liable in any event or manner whatsoever for incidental or consequential damages or injuries, including, but not limited to, loss of crops, loss of profit, out of pocket expenses or profits, rental of substitute equipment or other commercial losses.

5. General

(a) Most warrantable failures show up within the first few weeks of use. These failures are usually straightforward and warranty assessment is relatively easy.

(b) Failures relating to cutter decks and belts need careful investigation, as the cause may not always be straightforward. Look for damage to blades and pulleys especially when the cutter belt or blade boss have snapped or cracked as this could be due to impact damage.

(c) Customers should always refer to the operator/instruction manual when any disputed problem arises, you will find most areas covered within the manual.

Protecting your machine

Maintenance

Regular maintenance of your Webb machine is essential to ensure it operates, safely, efficiently and therefore reducing the environmental impact.

It is the owner's responsibility to ensure that their Webb machine is maintained at specific intervals. Any approved Webb service dealer can undertake a service, which are specialised in our products and will be aware of your particular machine and any technical updates which will save valuable time & money.

If you are using your machine in dry, dusty or high temperatures, you will need to service the machine more regularly.

Fuel (if applicable)

Due to ongoing efforts by fuel companies to reduce emissions, unleaded petrol will oxidize & deteriorate in storage overtime, leaving residue from detergent components.

Fuel deterioration problems may occur when petrol is stored for over 30 days. If you are planning to store fuel for over 30 days, we recommend you add Handy Parts Sure-Start fuel stabilizer to fresh fuel after purchasing. Sure-Start cannot reconstitute stale fuel.

Storage

When storing your machine for an extended period, we do recommend that you follow the instructions of engine instruction manual.

Always store the fuel in a clean, approved and sealed container. If the container is steel, ensure it is not corroded. If the container is not filled to its recommended capacity, air can accelerate fuel deterioration.

Always store fuel away from direct sunlight, in a dark, cool environment.

SERVICE BOOK

Your servicing Webb approved dealer will stamp & date the below relevant sections, when the correct service actions have been completed.

PLEASE ENSURE THE SERVICE BOOK IS AVAILABLE FOR THE DEALER, DURING SERVICE WORK.

1st Service

This must be stamped by an approved service dealer to qualify for a free second year warranty.
(Excluding the Webb Electric Handheld machines)

12 Months

Date

24 Months

Date

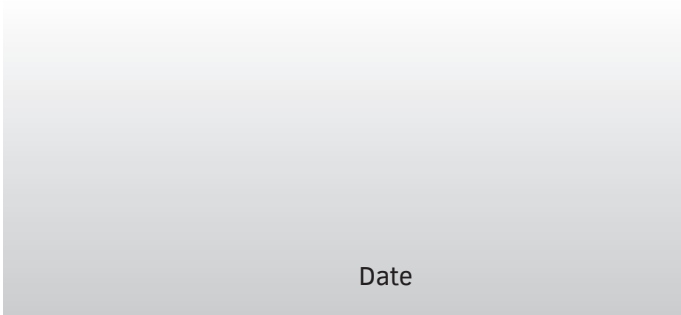
36 Months

Date

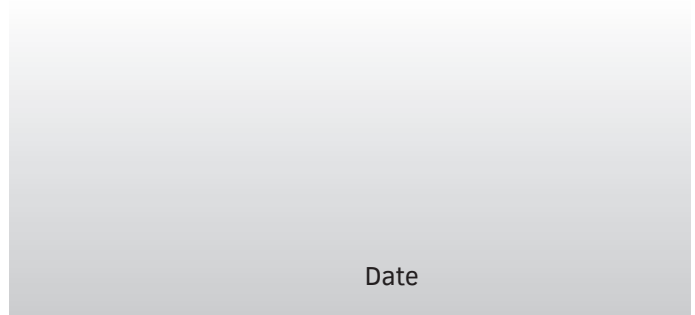


INSTRUCTION MANUAL

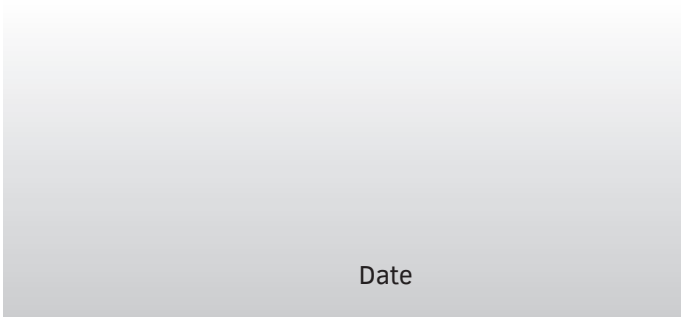
48 Months



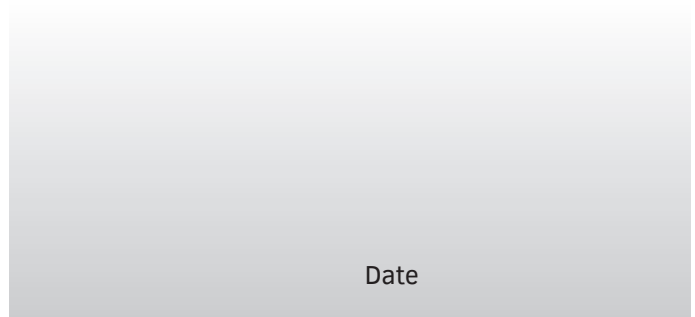
60 Months



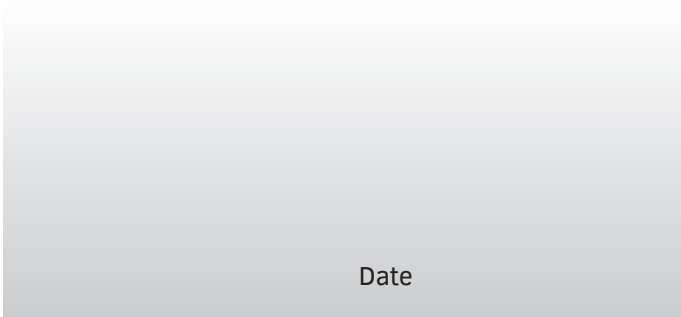
72 Months



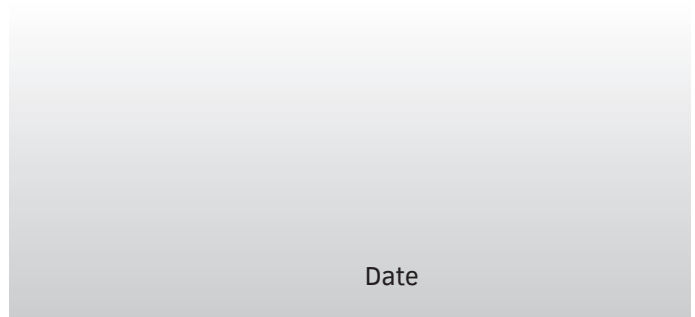
84 Months



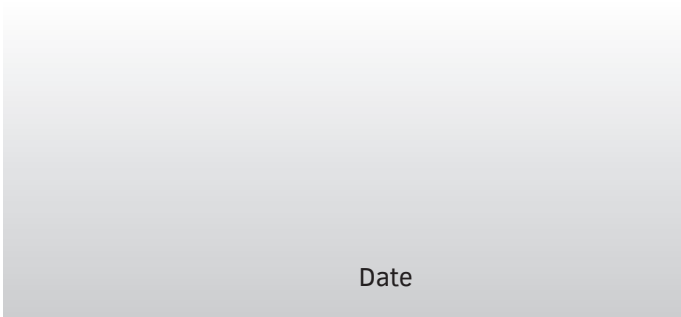
96 Months



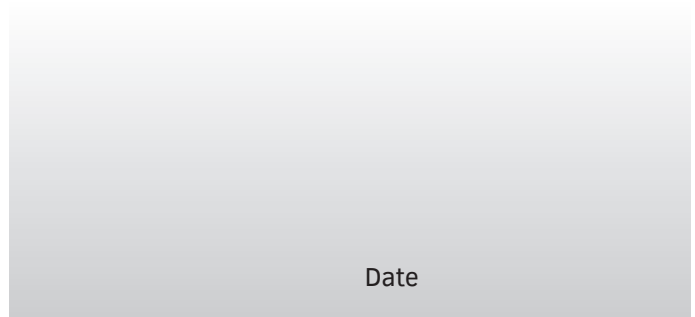
108 Months



120 Months



132 Months



If you have registered online, this form is not necessary.
PLEASE POST THIS COPY TO THE ADDRESS OVERLEAF

Product Information (* Compulsory)

*Model No:	
*Product No:	
*Serial No:	
*Date of Purchase:	

Personal Information (* Compulsory)

*Title		*Forename		*Surname	
*House Number		*House Name			
*Address 1					
*Address 2					
*Town					
*County					
*Postcode					
Home Tel				Mobile Tel	
Email					

Age	18 to 25	26 to 35	36 to 45	46 to 60	61 to 80	81 & over
*Usage	Domestic Use			Commercial/Professional/Hire Use		

*Dealer Stamp (if available)



*Selling Retailer (If dealer stamp not available)

*Dealer Name	
*Dealer Address	
*Date of Purchase	

Webb Lawnmowers privacy commitment to machine owners.
The information supplied, helps us to improve the products & services we provide, including information that we believe is relevant to your and/or your machine. We value your trust by giving us this information about yourself and we are committed to protecting your privacy.

Webb, its associated companies, authorised dealers or third parties working on our behalf may wish to contact you regarding **PRODUCT RECALLS** specific to your machine. Please advise how you wish to be contacted for this specific reason only:

Post Telephone Email

From time to time Webb, its associated companies, authorised dealers or third parties working on our behalf may wish to contact you regarding our products, services, offers or just opinions, which may be used for marketing, research or analysis purposes.
If you wish to be contacted by any of the following methods, please tick the relevant boxes:

Post Telephone Email

You may give Webb Lawnmowers notice in writing at any time that you no longer wish to receive direct marketing communications

Webb Lawnmowers
Murdock Road
Dorcan
Swindon
Wiltshire
SN3 5HY