



INSTRUCTION MANUAL

PETROL CHIPPER SHREDDER

MODEL NO: THPDS65 -- PRODUCT NO: 1938153002

EN - ORIGINAL INSTRUCTIONS

ASSEMBLY REQUIRED – MINIMUM TWO PERSON

SAVE THESE INSTRUCTIONS

SPARES & SUPPORT: 01793 333212



FOR YOUR SAFETY

Please read & understand this manual, paying attention to the safety instructions, before use.

Incorrect use of the product could put the operator or machine in danger.

Whilst every effort has been made to ensure the accuracy of information contained in this manual, our policy of continuous improvement determines the right to make modifications without prior warning.

Images used are for illustration purposes only

Copyright Notice

Copyright © Handy Distribution

Permission is granted to reproduce this publication for personal & educational use only.

Commercial copying, redistribution, hiring or lending is prohibited.

No part of this publication may be stored in a retrieval system or transmitted in any other form or means without written permission from Handy Distribution.

In all cases this copyright notice must remain intact.

CONTENTS

SPECIFICATION

IMPORTANT INFORMATION

GENERAL SAFETY INSTRUCTIONS

KNOW YOUR MACHINE

COMPONENTS

ASSEMBLY

OPERATION

MAINTENANCE

STORAGE

TROUBLE SHOOTING

PARTS DIAGRAM & LIST

EC DECLARATION OR CONFORMITY

WARRANTY

NOTES

ASSEMBLY IS REQUIRED - MINIMUM TWO PERSONS

This product requires assembly before use. See "Assembly" section for instructions. Because of the weight and/or size of the aerator, it is recommended that another adult be present to assist with the assembly. **INSPECT ALL COMPONENTS** closely upon receipt to make sure no components are missing or damaged.

If you require assistance with regards to the contents or operation of the machine, please contact us:

TEL: 01793 333212

EMAIL: customerservice@handydistribution.co.uk

(MON – FRI 8.00AM TO 5.30PM EXCL. BANK HOLIDAYS)

SPECIFICATION

The manufacturer reserves the right to change the product specification and livery according to continued product improvements.

Model	THPDS65
Product Number	1938153002
Engine	Briggs & Stratton XR950
Cubic Capacity (cc)	208
Engine RPM Max.	3600
Engine Oil	4 Stroke (Not Supplied – refer to engine manual for spec)
Fuel	Unleaded Petrol (Not Supplied – refer to engine manual for spec)
Maximum Cutting Capacity	6cm
Transmission	Parallel Twin V Belts
Cutting System	2 rotating – 1 static blades
Tyre Maximum PSI	20psi (Do not exceed)
Dimensions	L 123.2 x H 106 x W 51.5cm
Product Weight	N.W. 52.5kg – G.W. 75kg

IMPORTANT INFORMATION

INTENDED USE

The shredder is designed solely for shredding/chipping all kind of newly cut tree branches of diameter up to 6cm. This product is not intended for commercial use.

This is a garden chipper/shredder, therefore extended use over abrasive surfaces (e.g. concrete, tarmac etc.) could cause premature wear on the tyres. Commercial or industrial environments are not recommended.

Generally acknowledged accident prevention regulations and enclosed safety instructions must be observed.

Only perform work described in these instructions for use, any other use is incorrect. The manufacturer will not assume responsibility for damage resulting from such use.



WARNING

Read this instruction manual carefully before operating this machine. Make sure that you are familiar with the controls and properly operate the machine. Following these instructions can reduce the risk of personal injury.

IF NOT USED PROPERLY THIS MACHINE CAN BE DANGEROUS!

This machine can cause serious injury to the operator and others, the warning and safety instructions must be followed to ensure reasonable safety and efficiency in using this product. The operator is responsible for following the warning and safety instructions in this manual and on the machine. Never use the product unless the components are correctly positioned and operational.

TRAINING

Read the instructions carefully: Be familiar with the controls and the proper use of the equipment.

Never allow children or people unfamiliar with these instructions to use the product.

Local regulations can restrict the age of the operator.

Keep in mind that the operator or user is responsible for accidents or hazards involving the machine that occur

GENERAL SAFETY INSTRUCTIONS

Read and understand the owner's manual and labels affixed to the product. Learn its application and limitations as well as the specific potential hazards. Retain these instructions for future reference. The operator is responsible for following the warnings & instructions in this manual and on the product.

ALL USERS MUST BE OVER 18 YEARS OF AGE.

IMPORTANT SAFETY WARNINGS



TO REDUCE RISK OF INJURY: Before any use be sure everyone using this product reads and understands all safety instructions and other information contained in this manual.

GENERAL SAFETY

STAY ALERT

Do not operate the machine while under the influence of drugs, alcohol, or any medication that could affect your ability to use it properly. Do not use this machine when you are tired or distracted from the job at hand. Be aware of what you are doing at all times. Use common sense.

USERS

Do not at any time carry passengers on the chipper/shredder. Do not allow children to play on, stand upon or climb on the machine. Never allow children or people unfamiliar with these instructions to use the machine.

ALL USERS MUST BE OVER 18 YEARS OF AGE.

KEEP BYSTANDERS AND CHILDREN AWAY

Keep unauthorised persons a safe distance away from the machine. If approached, stop the machine immediately. Do not allow children to handle, climb on or use the machine. Keep in mind the operator or user is responsible for accidents or hazards occurring to other people or their property.

AVOID DANGEROUS CONDITIONS

Work in daylight or in good artificial light; always be sure of your footing on slopes; walk, never run with the machine; exercise extreme caution when changing direction on slopes; do not work on excessively steep slopes; use extreme caution when reversing or pulling the machine towards you; do not put hands or feet near or under rotating or moving parts.

INSPECT YOUR MACHINE

Check all bolts, nuts, and screws for tightness before each use, especially those securing guards and drive mechanisms. Vibration during use, may cause these to loosen.

Form a habit of checking to see that all other tools/equipment are removed from the working area before turning it on. Replace damaged, missing or failed parts before using it. Warning labels carry important information. Replace any missing or damaged warning labels.

CRUSH AND CUT HAZARDS

Always keep your hands and feet clear from moving parts while operating the equipment. Always keep the work area clean and clear when operating.

FIRE HAZARDS

To reduce fire hazards, keep the engine and silencer free of debris, leaves, or excessive lubricant. Always keep the machine away from naked flame or sparks.

DRESS PROPERLY

Do not wear loose clothing, gloves, scarfs, neckties or jewellery (rings, wrist watches), which can be caught in moving parts. Always wear long trousers. Always wear substantial non slip, substantial or heavy-duty safety footwear are highly recommended when working. Never operate barefoot or when wearing sandals. Wear a face or dust mask if the operation is dusty. Always wear safety glasses/goggles and/or face shields. Everyday eyeglasses have only impact resistant lenses; they are not safety glasses/goggles. Wear protective hair covering to contain long hair, preventing it from getting caught in machinery.

EAR PROTECTION

Always wear ear protection. Loud noises for an extended period, may damage your hearing.

CONDITIONS

We recommend the machine is not used in rain or wet conditions. Avoid high winds, which may affect the chippings exit from the machine.

DO NOT OVERREACH

Always keep proper footing and balance when using the machine. Use on slopes with great care. Never stand on the machine. Serious injury could occur if the machine is tipped or if the moving parts are unintentionally contacted. Do not store anything above or near the machine, where anyone might stand on the machine to reach them.

AVOID INJURY FROM UNEXPECTED ACCIDENT

Keep hands & feet out of the way of all moving parts. Do not place any part of your body or any tool e.g. in moving parts of the machine during operation.

DO NOT FORCE TOOL

Avoid large holes and ditches when transporting. Always work within the rated capacity. Do not use machine for a purpose for which it was not intended. Be careful when operating on steep grades (hill) the machine may tip over. Always operate at reduce speed in rough terrain, along creeks, ditches and on hillsides. Do not operate close to creeks, ditches and public highways.

NEVER LEAVE MACHINE RUNNING UNATTENDED

Do not leave the machine unattended until it has come to a complete stop.

TYRES - NOT FOR HIGHWAYS USE

Before operating make sure the tyres have the **RECOMMENDED TYRE PRESSURE OF 20 PSI (Do not exceed 20PSI)**. We recommend the use of FOOT or HAND inflation devices only. Do not use electric or mechanical inflation devices. This is a garden/domestic product, therefore extended use over abrasive surfaces (e.g. concrete, tarmac etc.) could cause premature wear on the tyres.

INSPECT

Before using, always visually inspect to see that the tools are not worn or damaged. Replace worn or damaged elements and bolts in sets, to preserve balance.

MAINTAIN YOUR MACHINE WITH CARE

Clean the machine immediately after use. Keep the machine clean to ensure it operates to it's full and safest performance. When maintaining this machine, only the manufacturer's original replacement parts should be used. The use of non-original manufacturer parts may invalidate your warranty.

PROTECT THE ENVIRONMENT

Take left over materials to an authorised collection point or follow the stipulations in the country where the machine is used. Do not discharge into drains, soil or water.

STORE IDLE EQUIPMENT

When not in use, the machine should be stored in a dry location. Keep the machine away from children and others not qualified to use it. Keep away from direct sunlight.



WARNING

The warnings, cautions, and instructions outlined in this instruction manual cannot cover all possible conditions or situations that may occur. It must be understood by the operator that common sense and caution are factors which cannot be built into this product and must be supplied by the operator.



DANGER

DANGER ZONE WITHIN 12 METRES - RISK ZONE GREATER THAN 12 METRES

The DANGER ZONE on the output of the machine must be respected, to avoid serious injury by chips thrown out of the output tube. Do not allow anyone to enter the operating DANGER ZONE with you. The danger zone is an area 12 metres in radius.

Insist that persons in the RISK ZONE beyond the danger zone wear eye protection from thrown objects. Do not operate if the user or bystanders have insufficient protection.

SAFETY SYMBOLS



Safety alert symbol. Used to alert you to potential personal injury hazards. Obey all safety messages that follow this symbol to avoid possible injury.



DANGER

Indicates an imminently hazardous situation which, if not avoided, will result in serious injury.



WARNING

Indicates a potentially hazardous situation which, if not avoided, could result in serious injury.



CAUTION

Indicates a potentially hazardous situation which, if not avoided, may result in minor or moderate injury.

CAUTION

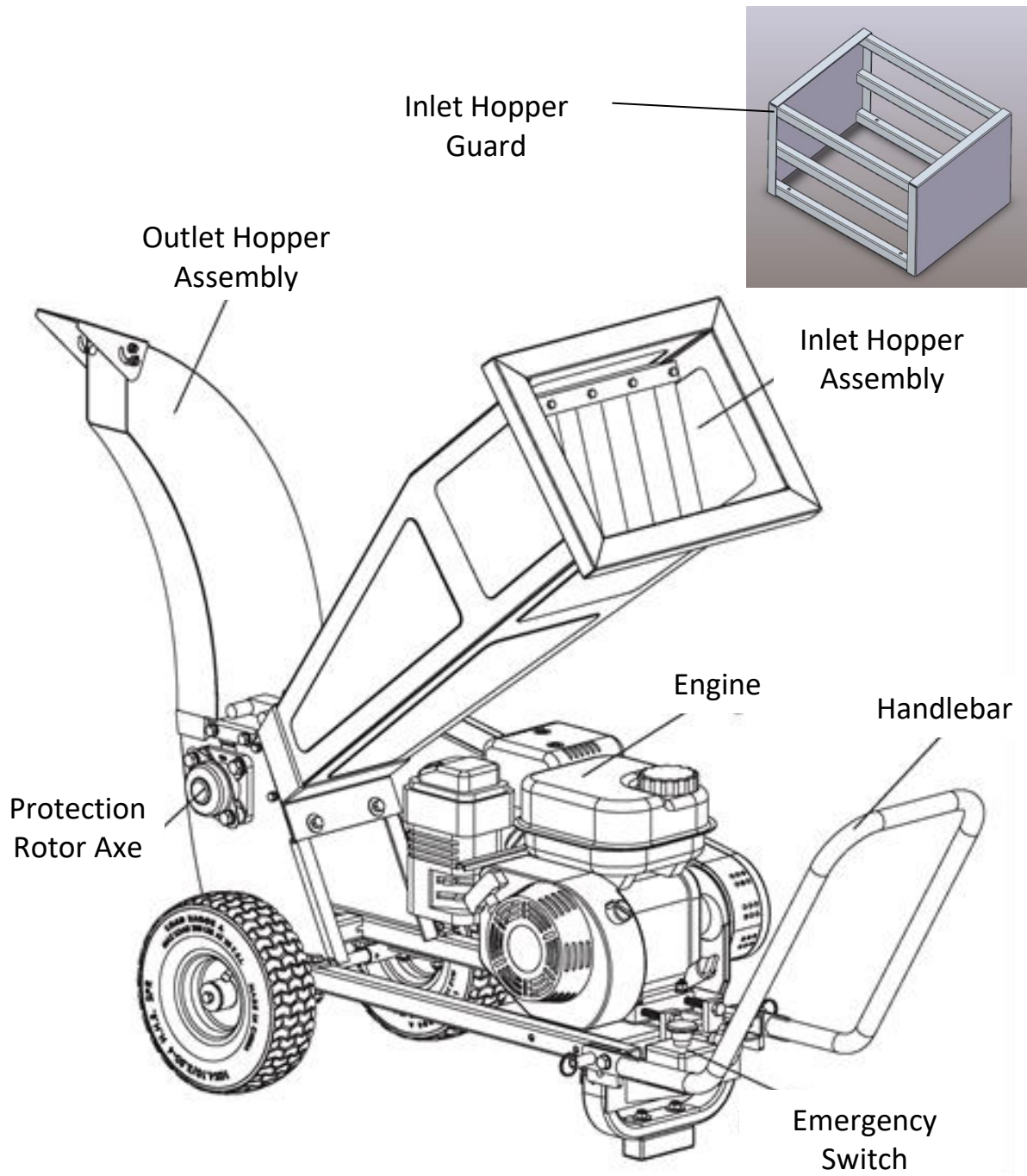
Used without the safety alert symbol indicates a potentially hazardous situation which, if not avoided, may result in property damage.



KNOW YOUR MACHINE



PLEASE NOTE THE INLET HOPPER GUARD, MUST BE FITTED TO THE INLET HOPPER ASSEMBLY.



COMPONENTS (THIS IS A MINIMUM OF TWO PERSONS ASSEMBLY.)

This product must be assembled correctly before use. Carefully remove the product and any accessories from the carton. Inspect the product carefully to make sure there are no breakages or damage occurred during shipping. Do not discard the packing material and carton until you have carefully inspected and satisfactorily operated the product.

Take all parts out of the carton and inspect components to ensure there are no missing pieces before starting to assemble the chipper/shredder.

If you require assistance with regards to the contents or operation of the machine, please contact us:

TEL: 01793 333212

EMAIL: customerservice@handydistribution.co.uk

(MON – FRI 8.00AM TO 5.30PM EXCL. BANK HOLIDAYS)



WARNING

If any parts are damaged or missing do not operate this product until the parts are replaced. Failure to heed this warning could result in serious personal injury.

Do not attempt to modify this product or create accessories not recommended for use with this product. Any such alteration or modification is misuse and could result in a hazardous condition leading to possible serious personal injury.

Read and follow all instructions for assembly and operation. Failure to properly assemble this equipment could result in serious injury to the user or bystanders, or cause equipment damage.

#33
Hex Bolt M10x60
2pcs



#26
Hex Bolt M8x25
2pcs



#62
Hex Bolt M8x20
4pcs



#61
Hex Bolt M8x16
2pcs



#16
Hex Bolt M6x12
2pcs



#54
Flat Washer Ø10
4pcs



#25
Flat Washer
2pcs



#64
Large Flat Washer Ø8
4pcs



#50
Flat Washer Ø8
2pcs



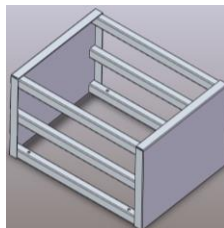
#68
Nylon Lock Nut M10
2pcs



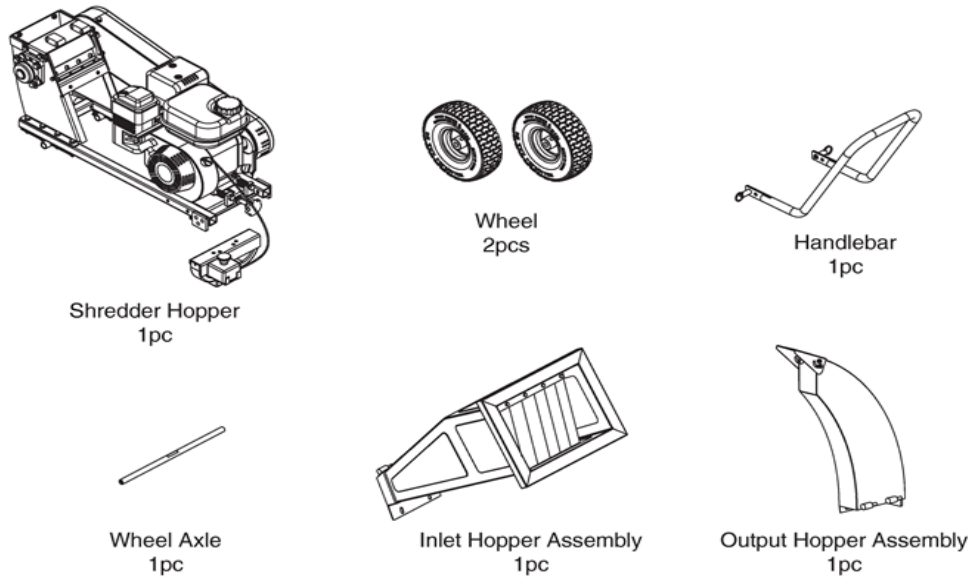
#52
Hex Nut M6
2pcs



#27
Lock Washer Ø8
8pcs



Inlet Hopper Guard - 1pc (incl. Fixing Kit - 4x Hex Bolt M8x35, 4x Flat Washer Ø8, 4x Lock Nut M8)



ASSEMBLY



CAUTION

When assembling or using the chipper/shredder exercise caution at all times.
 Serious injury to the user or bystanders may occur.

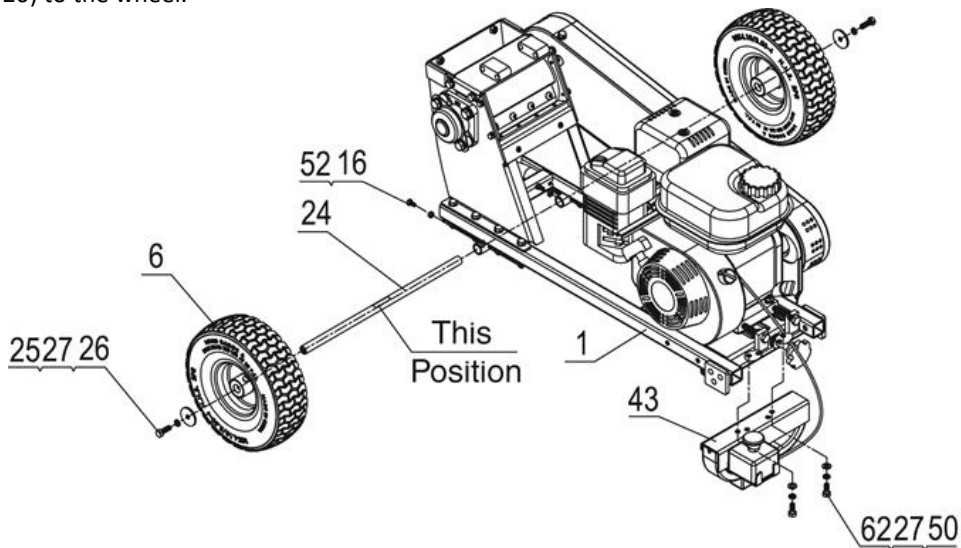
STEP 1: AXLE & WHEELS

Attach wheel axle (#24) and wheel (#6) to the base (#1) using hex bolt M8x25 (#26), lock washer $\varnothing 8$ (#27) and flat washer (#25).

Tighten the wheel axle (#24) using hex bolt M6x12 (#16) and hex nut M6 (#52).

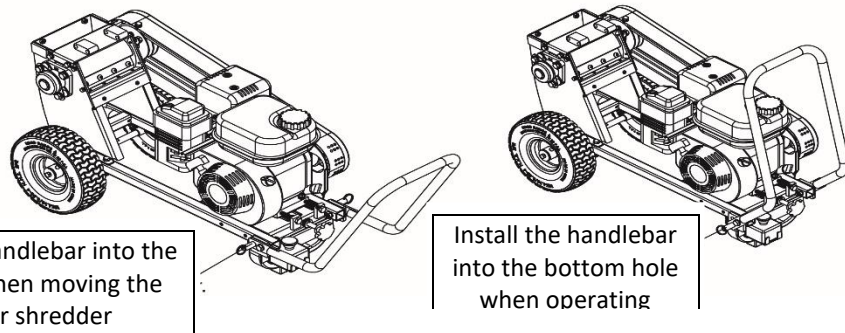
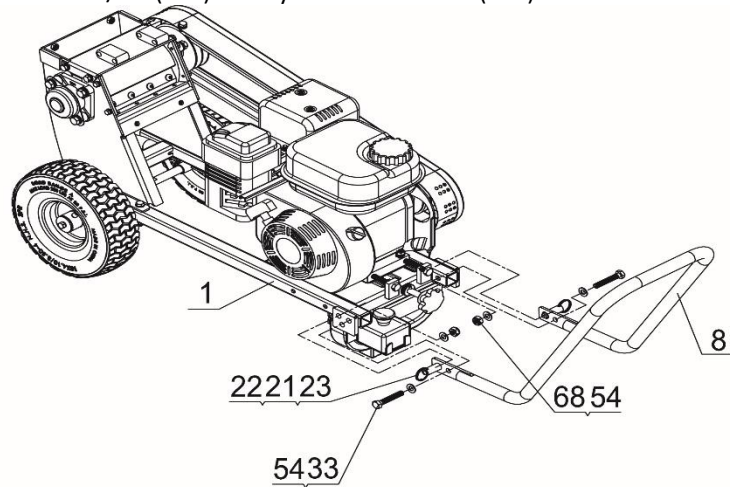
Attach support leg assembly (#43) to the base (#1) using hex bolt M8x20 (#62), lock washer $\varnothing 8$ (#27) and flat washer $\varnothing 8$ (#50).

Attention: Lock the Wheel Axle (#24) in position by using a 10" Adjustable spanner when fixing the hex bolt M8x25 (#26) to the wheel.



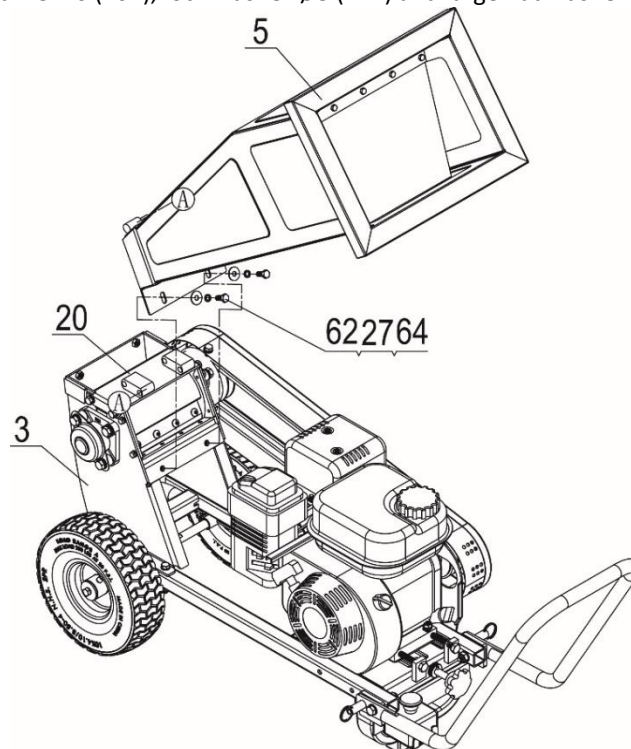
STEP 2: HANDLEBAR

Lock the handlebar (#8) and base (#1) using key ring (#23), pawl (#22) and spring (#21). Then fixed with hex bolt M10x60 (#33), flat washer $\varnothing 10$ (#54) and nylon lock nut M10 (#68).



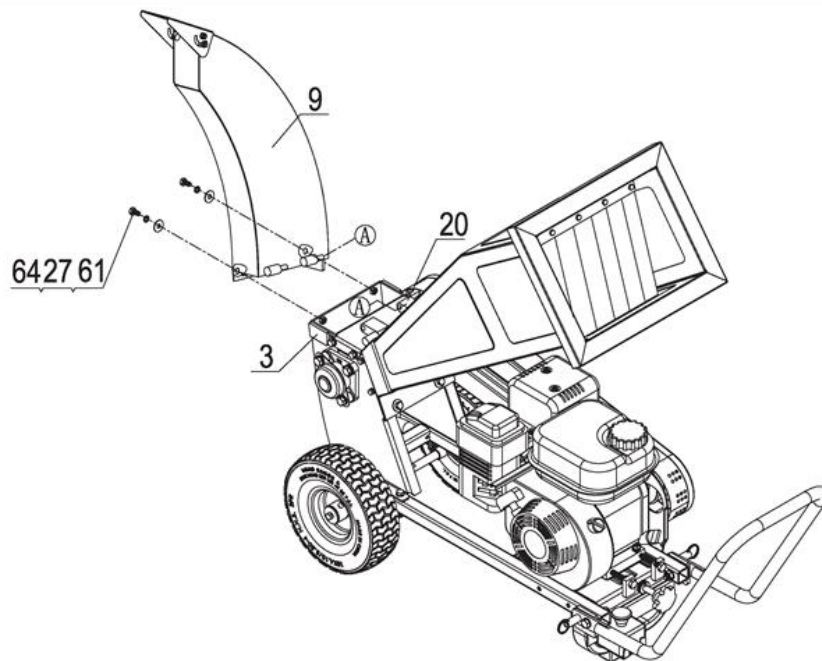
STEP 3: INPUT HOPPER & GUARD

Attach the inlet hopper assembly (#5) to the roller cover plate assembly (#20), then fit to the main shredder hopper (#3) using hex bolt M8x20 (#62), lock washer $\varnothing 8$ (#27) and large flat washer $\varnothing 8$ (#64).



STEP 4: OUTPUT HOPPER

Attach the output hopper assembly (#9) to the roller cover plate assembly (#20), then fixed with shredder hopper (#3) using hex bolt M8x16 (#61), lock washer Ø8 (#27) and large flat washer Ø8 (#64)



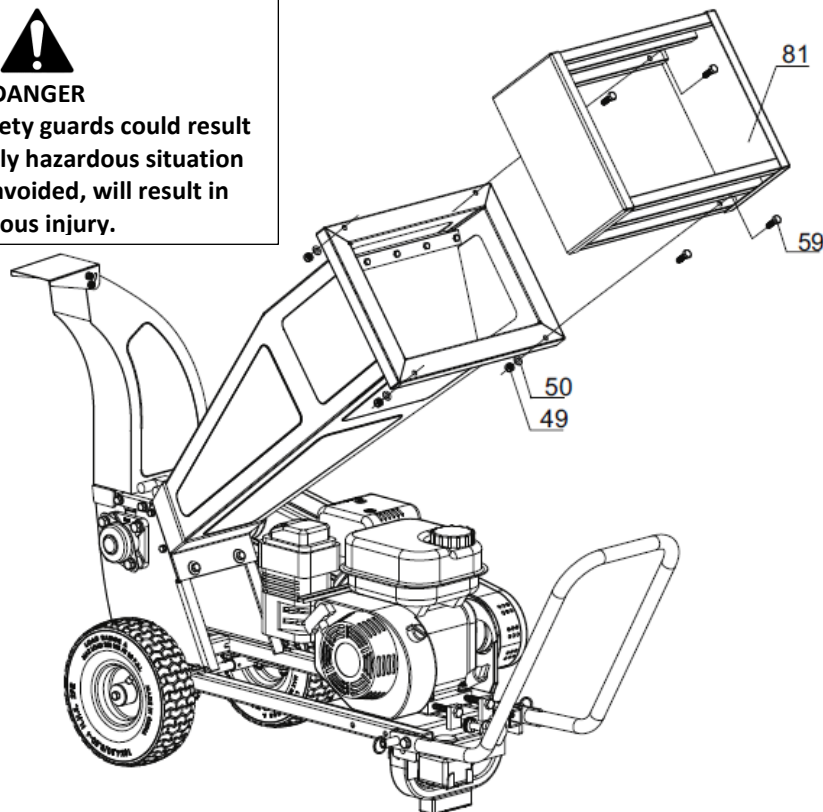
STEP 5: INLET SAFETY GUARD

Line up the fixing holes of the Safety Guard, with the fixing holes of the Inlet Hopper opening. From the top, place a M8x35 Hex Bolts through the Safety Guard and Inlet Hopper fixing hole. Secure by fitting a Flat Washer Ø8 and M8 Lock Nut to the M8x35 Bolt, ensuring the Nut is fully tightened through the blue inner elastic lining of the Lock Nut. Repeat steps for the remaining three M8x35 Bolts, Flat Washers Ø8 and M8 Lock Nuts.



DANGER

Failure to fit safety guards could result in an imminently hazardous situation which, if not avoided, will result in serious injury.



FUEL & OIL



Do not attempt to start this machine until you have read the engine manual thoroughly & followed the relevant instructions within the engine manual regarding oiling & fueling the engine.

ADD FUEL

- Petrol is an extremely flammable fuel. Keep clear of naked flames. Do not spill any fuel – do not smoke near fuel or the machine.
- Always shut off the engine before refueling.
- Do not fuel a hot engine – fuel may spill and cause a fire. Open the fuel cap carefully to allow any pressure build-up in the tank to release slowly and avoid fuel spillage. Fuel your machine only in ventilated areas. If you spill fuel, wipe the machine immediately – if fuel gets on your clothing, change immediately.
- To reduce the risk of serious or fatal burn injuries, check for fuel leakage. If fuel leakage is found, do not start or run the engine until leak is fixed.
- Unscrew the engine fuel cap slowly and fill the fuel tank with your fuel to a maximum of 80% capacity. This will allow for fuel tank expansion.
- Fasten the fuel cap tightly, being careful not to cross-thread. This will also prevent loosening through vibration during use.
- Wipe away any spillage, with an appropriate material.
- If the machine has continued leaks, the product should not be started. Never use the machine with damaged ignition cable or spark plug cap, as there is a risk of sparks.
- Use good quality unleaded fuel which contains NO ETHANOL or METHANOL. Use branded unleaded fuel, known to be of good quality (check engine manual for minimum octane levels).
- **Fuel which is older than 30 days old can become stale and cause acid & gum deposits in the fuel system or essential carburetor components. This could result in starting issues which would not be covered by your manufacturer's warranty.**
- To keep fuel fresh, we recommend you use *Handy Parts – Sure Start Garden Machinery Fuel Additive* which is available in 250ml bottles, for 25 litres of fuel.
 - ✓ Helps makes machines easier to start
 - ✓ Extends shelf life of petrol up to 2 years
 - ✓ Keeps carburetor & engine clean
 - ✓ Reduces emissions & increases fuel economy

IMPORTANT

- ✓ Ensure that any stored petrol is clearly marked in a separate appropriate canister for a maximum of 30 days. **FUEL OVER 30 DAYS OLD WILL CAUSE THE CARBURETTOR TO BLOCK & THE MACHINE DIFFICULT TO START. THIS IS NOT A WARRANTY ISSUE AND WOULD BE CHARGEABLE.**
- ✓ If the machine is not going to be used for a long period, drain the mixture from the fuel tank, start the engine & drain the carburetor of remaining fuel.

ADD & CHECK OIL

Follow instructions and specifications from the engine manual supplied with your machine.



Operating the engine with insufficient oil can have catastrophic consequences. Any failure caused by insufficient oil, will not be covered by the manufacturer's warranty, supplied with this machine.

OPERATION



DANGER

The DANGER ZONE on the output of the machine must be respected, to avoid serious injury by chips thrown out of the output tube. Do not allow anyone to enter the operating DANGER ZONE with you. The danger zone is an area 12 metres in radius.

Insist that persons in the RISK ZONE beyond the danger zone wear eye protection from thrown objects. Do not operate if the user or bystanders have insufficient protection.

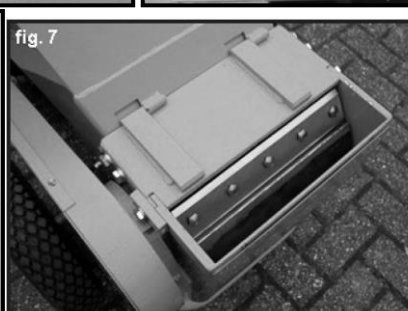
DANGER ZONE WITHIN 12 METRES - RISK ZONE GREATER THAN 12 METRES

The product must only be put into operation if no defects are found. It is crucial that any defective parts are replaced before the product is used again. Check the safety equipment and the safe condition of the product. Check all parts to make sure that they fit tightly. Check whether there are any visible defects: broken parts, cracks, etc.

Do not exceed the equipment maximum chipping/shredding capacity of 6cm.

SAFETY AND TECHNICAL REMARKS

- Ensure the instruction manual has been thoroughly read prior to operating.
- Only one person at a time should operate the machine.
- Person's operating the machine, must be 18 years old or over.
- Make sure the machine stands firmly on the ground and does not tilt in any way.
- Users must wear safety gloves, ear-protection and safety goggles (not provided) (fig.4).
- Never leave the machine running unattended.
- When working in a confined space, always ensure there is sufficient ventilation & lighting, to reduce the risk of suffocation & injury.
- Jammed pieces in the input tube (fig. 5) can only be removed safely when the engine is off. If necessary, unbolt & tip the input & output chutes to allow access to the blade assembly. Use a wooden pole to remove pieces stuck in the blade assembly. Never use your hands (fig.7 & 8).
- Changing the blades & checking blade bolts, should only be done when the engine is off, the spark plug cap is removed, the rotating blades have stopped & are blocked to stop movement.
- After the first hour of use from assembly, always check that all nuts & bolts still tightened properly. If not, tighten them again.
- Before use, make secure that the bolts on the fixed blade are firmly fixed.





BEFORE OPERATING THE MACHINE

Read the engine manual, ensuring the oiling and fueling of the machine are followed completely.

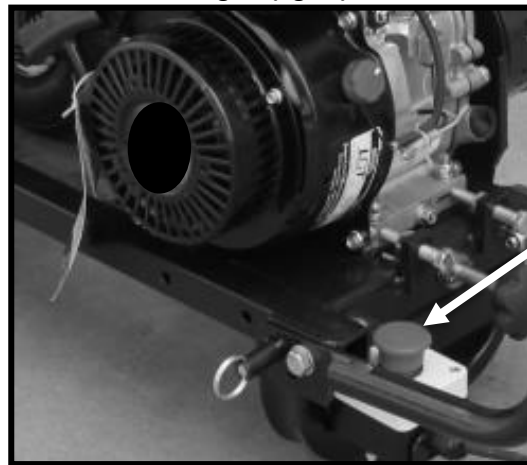
STARTING AND OPERATING THE MACHINE

- Start the engine at half throttle and let it warm up for 3 minutes approx. Then put the engine on full throttle. For correct use of the engine, always refer to the engine manual.
- Put the branches in the input chute and when you feel they are pulled in by the rotating blades, let the branch go. Do not hang on to the branch, the branch will be pulled in by the machine.



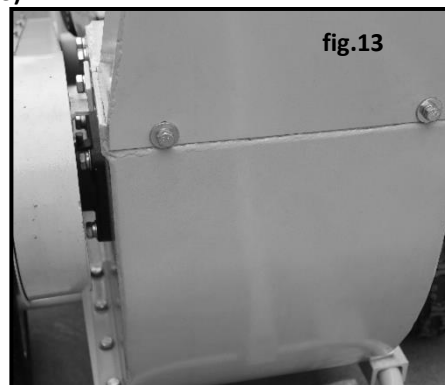
WARNING

In case of emergency or any doubt, immediately activate the safety switch (red knob) to be found by the engine (fig.11).



WARNING

Before starting the engine, check that the bolts holding the input and output chutes are fully tightened (fig.12 & 13).



TRANSPORTING THE MACHINE

- Always turn off the engine, when the machine is moved between areas and when transporting or storing the machine.
- When transporting in a vehicle: properly secure your machine to prevent it tipping over, fuel spillage and damage.

DURING OPERATION

- Make sure you always have good balance and secure footing.
- Always be aware of your surroundings and stay alert for possible hazards that you may not hear due to the noise of the machine.
- Never allow children to access the machines area.
- Avoid operating while bystanders, especially children & animals are nearby.
- To reduce the risk of injury, do not allow any other persons within a radius of 12 meters of your own position. To reduce the risk of damage to property, also maintain this distance from other objects (vehicles, windows).

AFTER FINISHING WORK

- Always clean dust and dirt off the machine – do not use any grease solvents.
- Always keep the machine clean, especially the fuel tank, its surroundings and the air filter.
- After the engine has stopped, the exhaust/muffler will still be hot. Never place the machine in any places where there are flammable materials such as dry grass, combustible gases or liquids.

MAINTENANCE

- Before operating make sure the tyres have the **RECOMMENDED TYRE PRESSURE OF 20 PSI (Do not exceed)**. We recommend the use of **FOOT or HAND** inflation devices only. Do not use electric or mechanical inflation devices. This is a garden/domestic product, therefore extended use over abrasive surfaces (e.g. concrete, tarmac etc.) could cause premature wear on the tyres.
- After the first hour's use check that the bolts of the blades and counter blade are firmly fixed and that the gap between blades and counter blade is 2-3mm. Adjust in the slots if necessary and fix the bolts. Service the machine regularly. Do not attempt any maintenance or repair work not described in the instruction manual. Have all other work performed by an approved service dealer.
- We recommend that servicing & repair work is carried out by an approved service dealer.
- Before proceeding to adjust or repair the machine, be sure to stop the engine and detach the spark plug.
- All technical check-ups and maintenance should be done with the engine shut off and the spark plug cap removed from the spark plug.
- We recommend the machine is cleaned with a brush after each use.
- While cleaning the machine, never spray the bearing with a high-pressure washer. It could cause water to enter the bearings which will cause damage to the machine; (this is not covered by warranty). The two grease nipples on the rotating blade require lubricating once a year or every 500 hours.
- Before putting the shredder into storage grease or oil the bearings, blades and rotating mechanism to protect against corrosion.

IMPORTANT:

If a part needs replacement, only use parts that meet the manufacturer's specifications. Replacement parts that do not meet specifications may result in a safety hazard or poor operation.

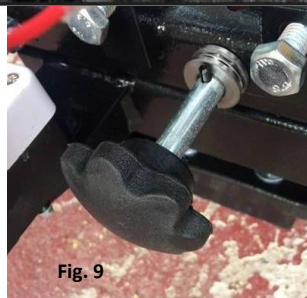
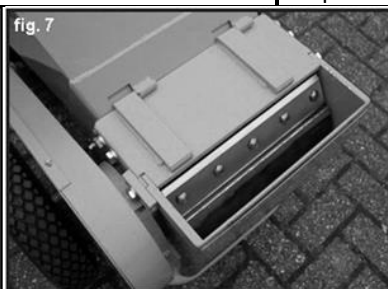
Engine repairs must be made by an approved service dealer for the engine manufacturer. The engine has a separate warranty to the machine. Refer to the engine manual supplied with the machine for full information and details.

STORAGE

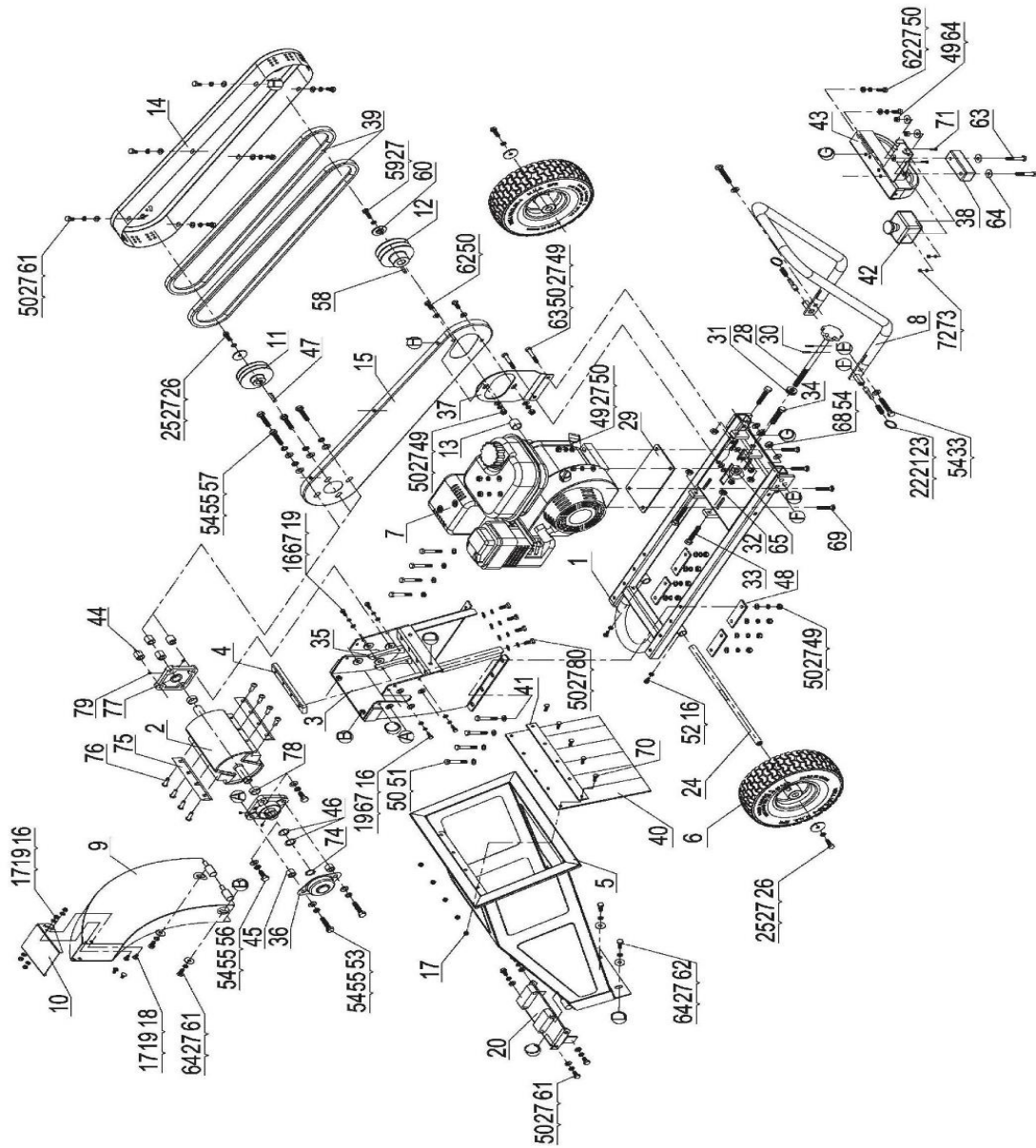
- Never allow material to remain in or on the machine for extended periods of time.
- Before storing make sure the spreader is clean and dry for years of trouble free service.
- Store indoors or protected area during severe weather and winter months.

TROUBLE SHOOTING

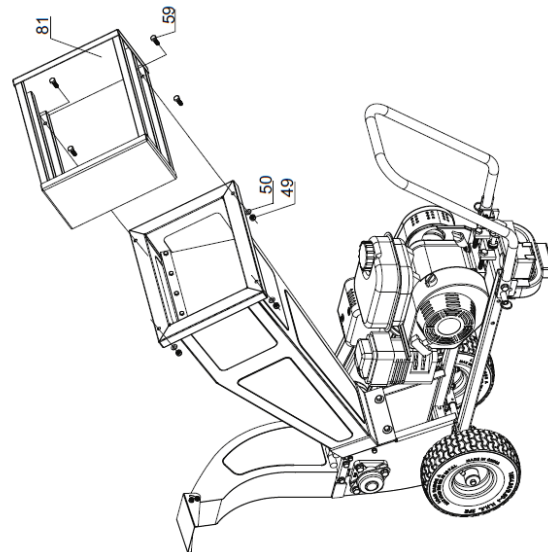
PROBLEM	CAUSE	SOLUTION
The shredder does not perform properly: the wood is not pulled in by the machine itself. The chips do not have the same size.	<ul style="list-style-type: none"> - the blades are worn. - the diameter of the branches inserted into the machine is too large. - there is too big a gap between the fixed blade and the counter blade: correct gap is 2-3mm. 	<ul style="list-style-type: none"> - change or sharpen the blades & counter-blade. Note: that the blades are sharpened on both edges so they can be reversed. (this should be undertaken by an approved service dealer only) - shut the engine off & remove the branch that is too thick - adjust the gap between the blade & the counter-blade in the slots.
The engine does not start/ the engine shuts off by itself	<ul style="list-style-type: none"> - electrical problem with the engine. - no fuel. - insufficient oil in the engine (refer to the engine manual.) 	<ul style="list-style-type: none"> Check that - the input tube is correctly fitted & the bolts are tight - put the start-switch of the engine "on" - de-activate the emergency switch (turn the knob) - check oil & fuel levels (see engine manual). - contact your approved engine dealer.
The rotation assembly jams. The engine will not start/ turn because the rotation mechanism is jammed.	<ul style="list-style-type: none"> - the diameter of the branch is too big - there are unacceptable materials such as stones or metal in the input tube - a length of branch remains in the rotation mechanism after the engine was last stopped. 	<ul style="list-style-type: none"> - shut off the engine, remove the spark plug cap and turn the rotation mechanism counter-clock-wise. Use a wooden stick to turn and to remove the material from the mechanism and input tube. If necessary, remove the cap of the bearing housing (fig. 6) and rotate the mechanism axle with a spanner (fig 8) If necessary, remove the input or output tube to facilitate access to the rotor (fig. 7 & 8). Check the sharpness of the blades and counter blade and replace them if necessary. Important: screw back the blade bolts.
Belt slipping or noisy	- belt needs adjusting	<ul style="list-style-type: none"> - adjust the belt tension knob (fig. 9) If you adjust it clockwise, the belt will loosen. If you adjust it anti-clockwise, the belt will tighten. Prior to shipping the belt has been adjusted by our factory and therefore, should not require any immediate action.



PARTS DIAGRAM



NOTE: Parts Lists are supplied for information purposes only, not all parts are stocked individually & we recommend you contact our Spares Team on 01793 333212 for expert advice.



Item No	Handy Part No	Description	Qty	Item No	Handy Part No	Description	Qty
1	TH237-CPR07001000	Base Weldment	1	41	TH237-CPR07000014	Mound Layer	1
2	TH237-CPR07002100	Roller Wdlement	1	42	TH237-CPR07013000	Emergency Switch	1
3	TH237-CPR07003000	Shredder Hopper	1	43	TH237-CPR07011000	Support Leg Assembly	1
4	TH237-CPR07000002DY	Striker Plate	1	44	TH237-CPR070000015DX	Belt Pulley Cover Bushing	4
5	TH237-CPR07004000	Inlet Hopper Assembly	1	45	TH237-CPR070000016DX	End Cup Bushing	2
6	TH237-CPR07010000	Wheel	2	46	TH237-N28000043FH	Adjustable Washer C	2
7		B&S Engine	1	47	TH237-CPR070000010	Flat Key	1
8	TH237-CPR07005000	Handlebar	1	48	TH237-CPR070000017	Connecting Plate	4
9	TH237-CPR07006000	Output Hopper Assembly	1	49	TH237-9206080000DX	Nylon Lock Nut M8	22
10	TH237-CPR07000005	Baffle	1	50	TH237-9301080000DX	Flat Washer ϕ 8	46
11	TH237-CPR07000007	Belt Pulley	1	51	TH237-910108055DX88	Hex Bolt M8x55	8
12	TH237-CPR07000008	Engine Belt Pulley	1	52	TH237-9201060000DX	Hex Nut M6	2
13	TH237-CPR07000009DX	Engine Bushing	1	53	TH237-910110040DX88	Hex Bolt M10x40	2
14	TH237-CPR07007000	Belt Pulley Cover Weldment	1	54	TH237-9302100000DX	Flat Washer ϕ 10	12
15	TH237-CPR07012000	Belt Pulley Base Plate Weldment	1	55	TH237-9306100000DX	Lock Washer ϕ 10	8
16	TH237-910106012DX88	Hex Bolt M6x12	8	56	TH237-910110025DX88	Hex Bolt M10x25	2
17	TH237-9206060000DX	Nylon Lock Nut M6	9	57	TH237-910110045DX88	Hex Bolt M10x45	4
18	TH237-911406012DX	Step Bolt M6x12	2	58	TH237-58	Engine Flat Key	1
19	TH237-9301060000DX	Flat Washer ϕ 6	8	59	TH237-910108030DX88	Hex Bolt M8x35	5
20	TH237-CPR07008000	Roller Cover Plate Weldment	1	60	TH237-CPR070000018DX	Gasket	1
21	TH237-Z330000003FH	Spring B	2	61	TH237-910108016DX88	Hex Bolt M8x16	12
22	TH237-Z330000008DX	Pawl B	2	62	TH237-910108020DX88	Hex Bolt M8x20	6
23	TH237-Z330000017DX	Key Ring	2	63	TH237-910108050DX88	Hex Bolt M8x50	4
24	TH237-CPR07000001DX	Wheel Axle	1	64	TH237-9302080000DX	Large Flat Washer ϕ 8	8
25	TH237-M010000009DX	Flat Washer (ϕ 8.5* ϕ 37*3)	3	65	TH237-CPR070000019DX	Hand Wheel Spacer	1
26	TH237-910108025DX88	Hex Bolt M8x25	3	67	TH237-9306060000DX	Lock Washer ϕ 6	4
27	TH237-9306080000DX	Lock Washer ϕ 8	40	68	TH237-9206100000DX	Nylon Lock Nut M10	2
28	TH237-CPR15012000	Hand Wheel	1	69	TH237-911408045DX88	Step Bolt M8x45	4
29	TH237-CPR07009000	Engine Transition Plate	1	70	TH237-910106020DX88	Hex Bolt M6x20	5
30	TH237-940204022FH	Elastic Cylindrical Pin	2	71	TH237-911004016DX	Cross Recess Pan Head Screw M4x16	2
31	TH237-960826129	Thrust Ball Bearing	1	72	TH237-9301040000DX	Flat Washer ϕ 4	2
32	TH237-9201100000DX	Hex Nut M10	4	73	TH237-9206040000DX	Nylon Lock Nut M4	2
33	TH237-910110060DX88Q	Hex Bolt M10x60	4	74	TH237-9304200000FH	Circlip for Shaft ϕ 20	1
34	TH237-910110055DX88Q	Hex Bolt M10x55	2	75	TH237-CPR07002001	Blade	2
35	TH237-CPR07000003	Blade Protection Piece	2	76	TH237-910408020FH109Q	Hex Socket Button Head Screw M8x20	8
36	TH237-CPR07000004	End Cap	1	77	TH237-GBT78101995	Square Inert Ball Bearing	2
37	TH237-CPR07000012	Shield Mounting Plate Assembly	1	78	TH237-CPR070000060DX	Knife Dish Spacer	2
38	TH237-CPR07000011	Bumper Block	1	79	TH237-912106006FH8.8	Hex Socket Set Screw with Cone Point M6x6	4
39	TH237-SPA1457	Belt	2	80	TH237-910508020FH88Q	Hex Socket Head Cap Screw M8x20	4
40	TH237-CPR07000013	Inlet Hopper Rubber	1	81	TH237-CPR07014000	Safety Guard	1

EC DECLARATION OF CONFORMITY



We Handy Distribution Ltd - SN3 5HY (Importer) declare that the product:

Designation: Chipper Shredder 65

Model(s): THPDS65

Product Number: 1938153002

Type/Serial No: As per rating label on machine

Complies with the following directives:

2006/42/EC – Machinery Directive

2000/14/EC amended by 2005/88/EC - Noise Emission of Outdoor Equipment Directive

The conformity assessment procedure followed was in accordance with

EN ISO 12100:2010, EN 13683:2003+A2:2011+AC:2013, EN 349:1993+A1:2008,

EN ISO 14120:2015, EN ISO 13857:2008

EN ISO 3744:2010

Guaranteed Sound Power Level

104 dBA

Notified Bodies:

Ente Certificazione Macchine Srl

Address(es):

Via Ca' Bella, 243 – Loc. Castello di Serravalle – 40053 Valsamoggia (BO) - ITALY

Authorised signatory & technical file holder

Date:

18/01/2019

Signature:

A handwritten signature in black ink, appearing to read 'S Belcher', written over a horizontal line.

Name: Mr Simon Belcher

Position: Managing Director

Company: Handy Distribution Ltd

Address: Murdock Rd, Dorcan, Swindon, Wiltshire, SN3 5HY.

GJ HANDY & CO LTD USER WARRANTY POLICY

Users Statement of Warranty

Each new machine is warranted against defective material or assembly of material under normal usage. The warranty applies to the original purchaser and covers faulty parts and the labour involved in replacing and repairing those parts, which are of original manufacture.

Period of Warranty

Webb (excludes Electric Handheld, Dynamic, Heritage, Legacy), Webb Pro, Sanli Engine

- a) 2 years from the original date of sale to the first domestic user.
- b) 90 days from the original date of sale to the professional/commercial user.
- c) 90 days from the original date of sale when used for hire.
- d) A reduced warranty period of 90 days applies to those items which are subject to normal wear and tear (e.g. but not limited to wheels, tyres, cutter bars, cylinders, cutting blades, blade boss, belts, cables, nylon line & spool, collection bags, spark plugs).
- e) Engines are supplied with a separate warranty to the machine. The engine manufacturers warranty statement which will be supplied within the engine instruction manual. All enquiries and warranty repairs should be discussed with the engine manufacturer or approved warranty repair dealer.
- f) 90 days from the original date of purchase for Replacement Spare Parts (unless normal wear & tear component, which are covered for 30 days).
- g) All machines' must be serviced within the first 12 months from the original date of purchase to comply with the warranty, failure to do so will invalidate the 2nd year of the warranty.

Webb Electric Handheld, Webb Dynamic, Heritage & Legacy, Handy, Mowerland, Q-Garden

- a) 1 year from the original date of sale to the first domestic user.
- b) 90 days from the original date of sale to the professional/commercial user.
- c) 90 days from the original date of sale when used for hire.
- d) A reduced warranty period of 90 days applies to those items which are subject to normal wear and tear (e.g. but not limited to wheels, tyres, cutter bars, cylinders, cutting blades, blade boss, belts, cables, nylon line & spool, collection bags, spark plugs).
- e) Engines are supplied with a separate warranty to the machine. The engine manufacturers warranty statement which will be supplied within the engine instruction manual. All enquiries and warranty repairs should be discussed with the engine manufacturer or approved warranty repair dealer.
- f) 90 days from the original date of purchase for Replacement Spare Parts (unless normal wear & tear component, which are covered for 30 days).

All warranty repairs must be undertaken by an authorised service dealer. These dealers have been accredited by GJ Handy & Co Ltd and agree to only use genuine parts and follow our repair procedures.

Not covered by this warranty

- a) The warranty policy does not cover any depreciation or damages caused by ordinary wear, rusting or corrosion, lack of correct maintenance or operation, misuse, abuse, lack of transportation or accident.
- b) The warranty policy does not cover any costs necessary for the standard periodic maintenance services instructed by the operator's manual, or service parts replacement which would include oil, filters, tyres, belts, brake linings, fuses, blades, seals and other service parts unless it can be proven that the item has evidence of faulty manufacture.
- c) The warranty policy will not cover failure or damage caused as a result of parts or accessories being modified without the written approval of GJ Handy & Co Ltd.
- d) The warranty policy will not cover the unit if non-genuine parts have been fitted and as a result damage has occurred to the unit.
- e) The warranty policy is non-transferable and is only applicable to the original purchaser.

Disclaimer

- a) This warranty is only a remedy for defect of products. GJ Handy & Co Ltd will never warranty in terms of the merchantability or the fitness for a particular purpose.
- b) No person is authorised to make any warranties, representations or promises, expressed or implied, on behalf of GJ Handy & Co Ltd, or to modify the terms conditions or limitation of this warranty policy in any way.
- c) Neither GJ Handy & Co Ltd nor any company affiliated with GJ Handy & Co Ltd shall be liable in any event or manner whatsoever for incidental or consequential damages or injuries, including, but not limited to, loss of crops, loss of profit, out of pocket expenses or profits, rental of substitute equipment or other commercial losses.

General

- a) Most warrantable failures show up within the first few weeks of use. These failures are usually straightforward and warranty assessment is relatively easy.
- b) Failures relating to cutter decks and belts need careful investigation, as the cause may not always be straightforward. Look for damage to blades and pulleys especially when the cutter belt or blade boss have snapped or cracked as this could be due to impact damage.
- c) Customers should always refer to the operator/instruction manual when any disputed problem arises, you will find most areas covered within the manual.

**For spares or support of your handy product,
please contact us:**

Tel: 01793 333212

**Email: customerservice@handydistribution.co.uk
(Mon – Fri 8.00am to 5.30pm excl. Bank Holidays)**

To see our range of garden machinery & equipment visit:

www.thehandy.co.uk

Making gardening easier & affordable since 1938

Distributed by Handy Distribution, Murdock Road, Dorcan, Swindon, SN3 5HY