

COMMAND™ CLIPS

INSTRUCTIONS FOR USE

**EASY
ON**



1
WIPE WALL lightly
with rubbing alcohol.



2
REMOVE BLACK LINER.
PRESS strip firmly to
wall for 30 seconds.

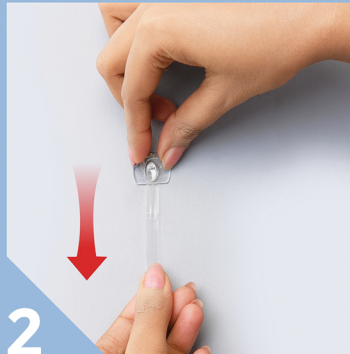


3
REMOVE BLUE LINER.
PRESS hook to strip.
WAIT 1 HOUR.

**EASY
OFF**



1
HOLD HOOK gently
in place.



2
SLOWLY PULL STRIP
straight down



X
Never pull the strip
towards you.