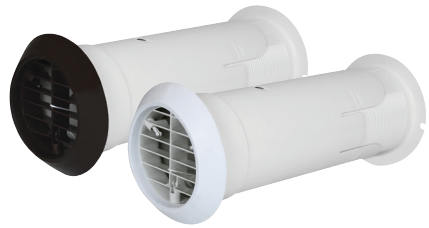


MANROSE®

NEW Deluxe Quick Internal Fit Wall Kit

Quick, safe, simple.

A Step-by-Step Guide to installing the Manrose Deluxe Quick Internal Fit Wall Kit.



Cat. No.

DHRIWKW
DHRIWKB
DHRIWKWBS
DHRIWKBBS

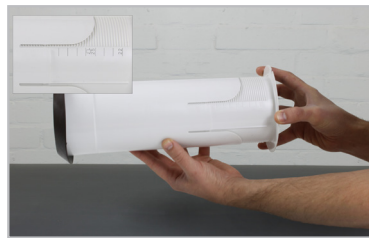
Product type

White
Brown
White with Backdraught Shutter
Brown with Backdraught Shutter



Step 1

Core drill or use the existing hole. Measure the depth of the hole to allow you to re-size the wall kit to fit precisely.



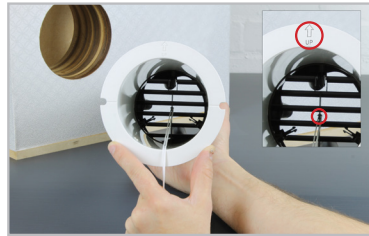
Step 2

Using the measuring scale on the side of the wall kit, adjust the length of the wall tube so that it matches the length of the wall. The adjustable wall tube means there is no need for cutting plastic on-site.



Step 3

Fold the rubber flange inwards and push the grille and flange down into the tube. There are 3 pins that will be retracted inside the tube at this point.



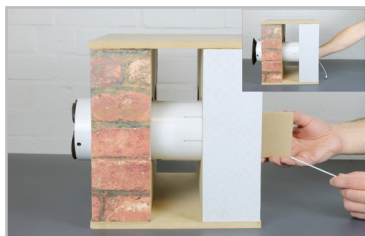
Step 4

Ensure the arrow on the plastic end plate is facing the same way up as the arrow on the inner surface of the external grille. This will ensure that the external louvre grilles are the correct orientation to deflect rain.



Step 5

Now the wall kit is set up, it is ready to push through the wall.



Step 6

Insert the cardboard push device supplied with the kit and push the external grille until you hear the click of the pins, which will tell you they have deployed on the outside of the building.



Step 7

Remove the cardboard push then using the pull cord already in place, firmly pull the grille back towards you. This will ensure the rubber flange creates a secure seal against the external wall and covers all breakout.



Step 8

Using the screws supplied, secure the plastic end plate in place to ensure the wall kit does not rotate. Then, using a pair of scissors, cut the pullcord off and discard.



Step 9

For backdraught shutter models, align the supplied shutter so that the non-return flaps are vertical and so that they open away from the interior of the room when air is channelled down the tube towards the exterior grille. Insert the backdraught shutter no more than 200mm into the tube.



Step 10

Now you are ready to install your fan. Simply slide the spigot of the fan into the wall tube and fix in place.