



# Essentials Alarm Kit YES-ALARMKIT

## Installation · Programming · Operating

Keep this manual safe for reference and future maintenance

## Introduction

### General System Overview

Thank you for choosing this Yale Wireless Security Alarm System. This simple to install system has been designed with the user in mind.

The Siren has a sounder and strobe LEDs to attract attention.

### Number of devices

You can install up to 20 accessories in the system. As well as extra Door/Window Contacts, PIRs and Key Pads, you can add Smoke Detectors, Key Fobs and Panic Buttons.

### Tamper proof system

Each part of the system is 'tamper' protected. Any unauthorised tampering with the system will result in an alarm. This feature can be turned off by the user when a battery change is required.

### Entry/Exit feature

The system has a 20 second entry/exit time. This feature allows you time to leave the home when arming the system. Upon entering, the feature allows time to disarm the system without causing an alarm.

### Take care of your safety

Display extreme caution when using ladders or steps, please follow manufacturer instructions. Be careful when using hand and power tools and follow the manufacturers' guidelines when using them. Take care that the correct tools are used. Wear goggles or protective clothing where required. The external Siren is extremely loud, please ensure you replace the cover and retreat to a safe distance before testing.

For more information please visit  
[www.yale.co.uk/help](http://www.yale.co.uk/help)

This system is NOT compatible with EF Series, SR Series & AC Series accessories. Compatible with HSA accessories only.

## Contents

### Contents

1	Location planning	2
2	Unpacking the system	3-4
3	Programming the system	5
4	Mounting devices	6-8
5	Using the system	9-10
	Adding accessories	11
	Changing the batteries	12
	Trouble shooting	13
	Specifications	14

### Recommended Installation Sequence

We recommend you follow the easy start sequence, headings numbered **1-5**.



The 2 year guarantee for this Yale Alarm Kit is active from the date of purchase (A copy of this guarantee is available on our website).

Information and illustrations are subject to change within this document. Yale reserves the right to alter the specification and product design at anytime without notice. Yale® is a registered trademark. © 2019 ASSA ABLOY. All rights reserved.

# 1 Location planning

Work out the best places to locate the accessories for maximum protection. Having chosen the locations do not mount at this stage.

## Operating range

All devices must be within 30 metres of the siren and must not be mounted on or near large metal objects. Avoid obvious sources of electrical interference such as fridges and microwave ovens.

## Tamper switches

When mounting devices ensure that any tamper switches close fully. On uneven surfaces it may be necessary to place packing behind the switch for reliable operation.

### Panic Button

The Panic Button provides extra protection for you and your family. When help is needed the button can activate your alarm immediately - even when the system is disarmed.

- Mount on bedroom wall or by the front door
- Not clearly visible to an intruder
- Easily accessible
- Out of reach of children

### Smoke Detector

- Mount in the middle of the ceiling at the top of a stairwell, or on the centre of hallway ceilings where smoke would most likely be detected.
- Do not mount in corners or above cooking appliances and heaters.
- Install additional detectors if there are closed doors preventing smoke from reaching detectors.

### Siren

Choose a position on an external wall where the siren would be most prominent. Mount as high as possible, out of easy reach.

### Door/Window Contact

Use the Door/Window Contact on a door that is used as the main point of entry and exit, usually your front door.

- Mount as high as possible.
- Do not aim a PIR at this door or window.

### Key Fob

Can be used outside the premises and kept on your keyring.

### PIR Motion Detector

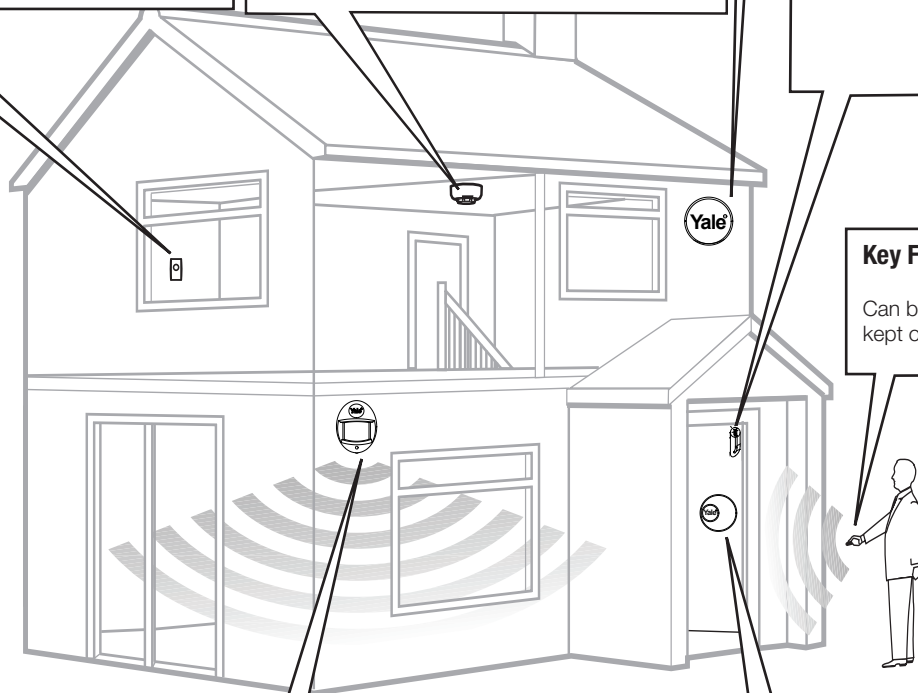
- Mount in a position such that an intruder would normally move across a PIR's field of view.
- Height should be between 1.7 and 2.3 metres above floor level.
- Location in a corner will ensure wider room coverage.
- Do not mount a PIR where its field of view will be obstructed e.g. by curtains, ornaments etc.
- Do not point directly at sources of heat e.g. fires or boilers, and do not position directly above radiators.
- Avoid mounting a PIR directly facing a window.
- Do not point a PIR at a door protected by a Door/Window Contact.

### Key Pad

- The Key Pad should be sited next to the main point of entry/exit so that the system can be disarmed/armed within 20 seconds of entering/leaving the premises.
- Ensure that the Key Pad is not visible from the outside of the premises.
- Mount at chest height for ease of use.
- Designed for indoor use only.

### Extend the system

Extend the system in the future to increase your security or as your needs change, for example, add extra PIR Detectors in bedrooms and extra Door/Window Contacts.



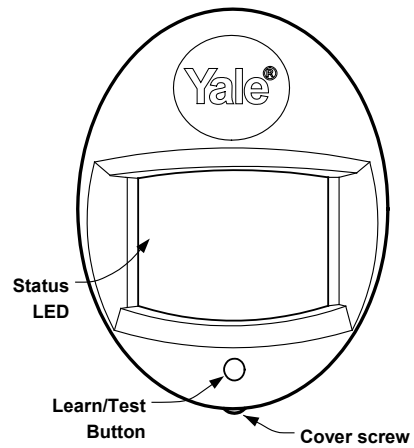
# 2 Unpack all the parts



## PIR Motion Detector HSA6020

- 1 Pull out the plastic pull tab on the back of the PIR. This will activate the batteries.

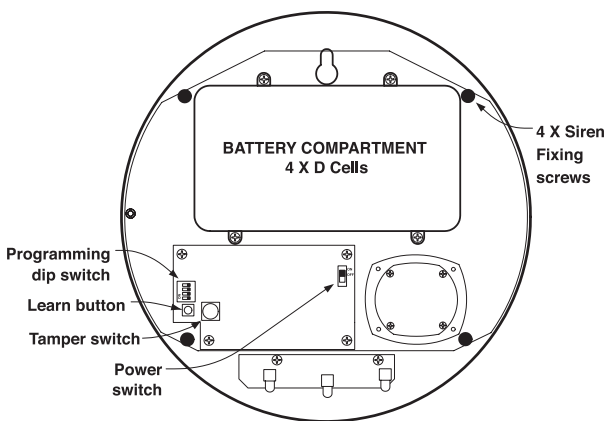
*(A red light can be seen flashing through the lens. This will last for 30 seconds indicating the accessories initiation.)*



### WARNING

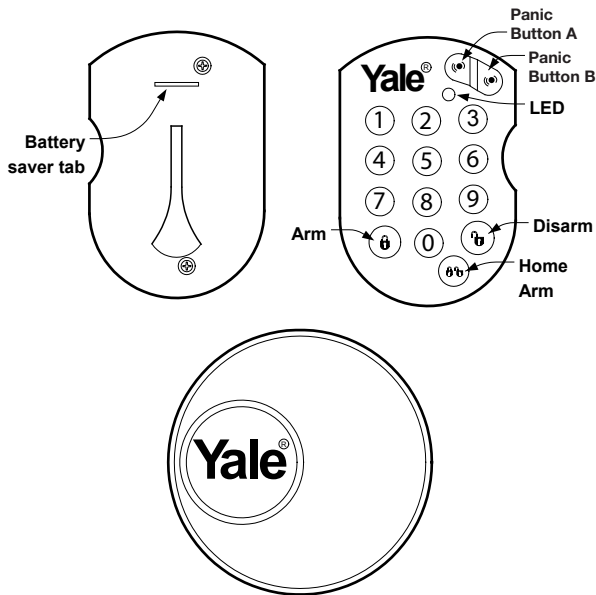
**The Siren is very loud, be prepared! Take care not to activate the Siren tamper switch unnecessarily.**

- 1 Remove the cover by unscrewing the single screw located on the lid.
- 2 Move programming switch (no.4) to on position.
- 3 Move power switch to on position
- 4 Press learn button. LED's 1 & 2 will flash.



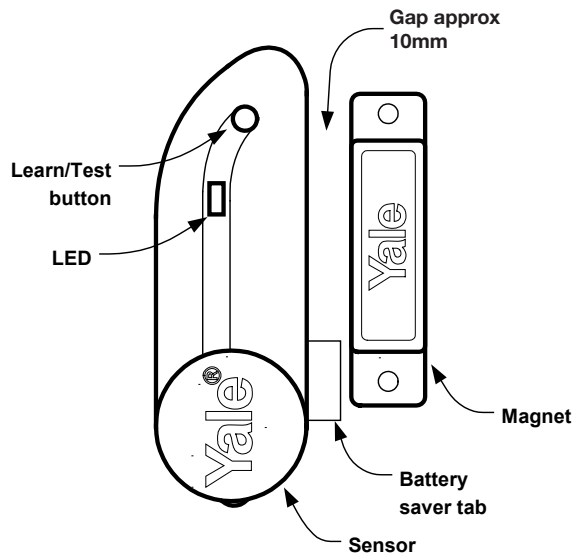
## Key Pad HSA6080

- 1 Pull out the plastic battery saver tab at the back of the remote Key Pad. This will activate the batteries.



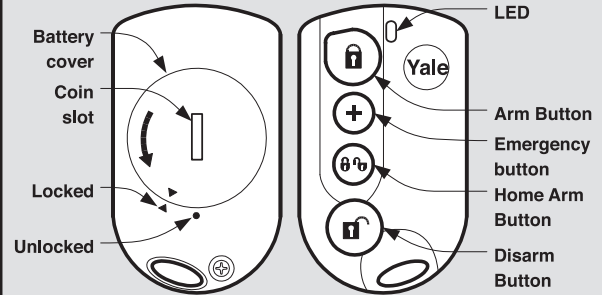
## Door/Window Contact HSA6010

- 1 Pull out the plastic pull tab found on the side of the main unit. This will activate the battery.



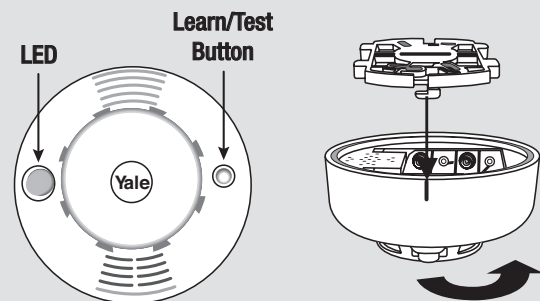
## Key Fob HSA6060 (Sold Separately)

- 1 Open the battery compartment using a coin by turning the cover in the direction of the big arrow so the cover small arrow is next to round dot.
- 2 Insert CR2032 battery (supplied) and replace cover.



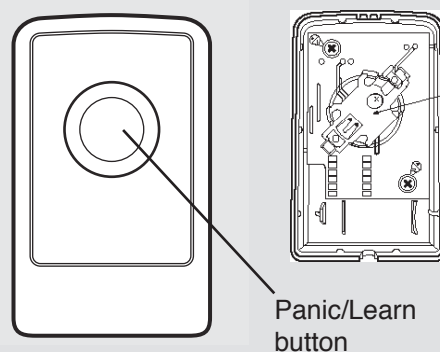
## Smoke Detector HSA3070 (Sold Separately)

- 1 Remove the cover and insert four AAA batteries (supplied).
- 2 The Smoke detector will now enter into self-calibration mode for 10 minutes. It will resume normal operation after this period.



## Panic Button HSA3045 (Sold Separately)

Remove the cover by loosening the fixing screw and insert the CR2032 cell battery (supplied). Please ensure you observe battery polarity and insert the battery under the two tabs and click into place.



# 3 Programming the system

The Siren is the heart of the system. All components must be recognised by the Siren.

## 1 Entering Learn mode:

- Press and hold the **Siren learn button** for 1 second.  
*(A short beep will follow with the outside LEDs flashing once.)*

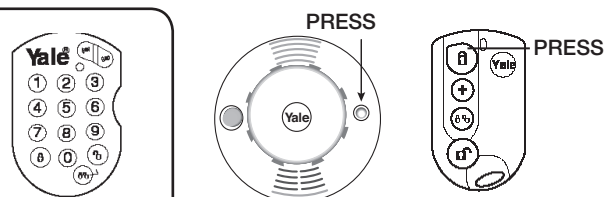
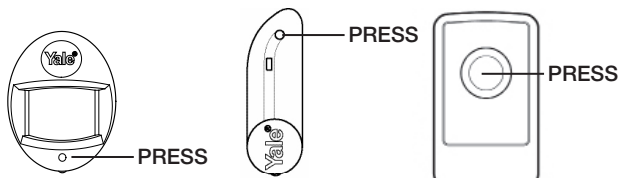
**i** System is now in learning mode for 3 minutes. Proceed to the following steps to add in additional accessories (20 maximum) within this time period.

If device learning takes more than 3 minutes and the learn mode expires, the siren learn button will need to be pressed again to add more accessories.

## 2 Adding devices:

**i** When any accessories is learnt-in, the siren will beep once and the outside LEDs will flash once in acknowledgement.

Remember to press any buttons and keys firmly for 1 second to send a learn-in radio signal.



**Key Pad** (All keys should be pressed in quick succession.)

- 1 Press **Panic button A** and enter **PIN code** (please note that the default PIN code is 0000).  
*(The LED will now be flashing. System is now in setting mode)*

- 2 Press **Panic button A** and enter **8**.  
*(The keypad will confirm with two fast flashes that it is in "Siren as master" mode.)*

- 3 Press **Panic button A** then **1** to send learn-in signal, then press **disarm** twice to quit.  
*(The Key Pad LED will now stop flashing. If not, press "disarm" twice again)*

## 3 Exiting Learn mode:

- Press the **Siren Learn button** to exit the learn mode  
*(The middle LED will flash once and there will be a single short beep to indicate that normal Siren operation has been resumed.)*

## 4 Adjusting Alarm ringing duration:

- Dip switch 3 determines the alarm ringing duration length. Switch left for 4 minutes or right for 10 minutes (default) .

## 5 Enable/disable interference detection:

- Set Dip switch 2 for interference detection. Switch left to enable and right to disable (default).

**i** This unit is equipped with the latest type of radio receiver using AM radio technology. If the system is armed any criminal attempt to interfere detector transmissions will trigger an alarm. If the alarm is frequently triggered by interference there may be high levels of unusual radio signals in your area. Some kinds of electronic equipment can generate this kind of radio interference. In the unlikely event of you experiencing problems with interference, it is recommended that you switch interference detection off.

**Programming is now finished and the system is ready to be installed.**

# 4 Mounting devices

**WARNING** Before mounting the Key Pad and Siren ensure that the system tamper is disabled as described below.

## Disabling the system tamper

**i** Before mounting it is important to disable the system tamper to avoid the Siren sounding an alarm.

### Using the KeyPad:

- Press **Panic button A** and enter **PIN code** (factory default is 0000) to enter test mode, press **Panic button A** then **2** to send "Tamper Off" signal.  
*(The Siren will beep in acknowledgement.)*

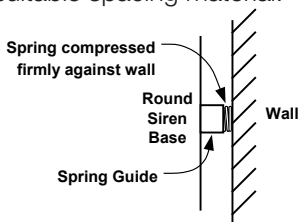
### Using the Keyfob:

- Press and hold down **Arm** and **Home arm** buttons for 5 seconds.  
*(The Siren will beep in acknowledgement.)*

**i** The tamper function is now disabled for one hour. If more time is required, simply repeat the above step.

## Mounting the Siren

Ensure the tamper switch is fully depressed when the siren is mounted. If there is a gap, pack with a suitable spacing material.



- 1 Using the large screws and wall plugs provided, mount on the desired wall through the 4 mounting holes on the Siren base.

- 2 Fix the Siren cover with the securing screw.

### Testing whether the Siren is fitted correctly:

- 1 Press **Arm** with the Key Pad/Key Fob.
- 2 If there are 5 short beeps when armed, the tamper switch is NOT fully depressed and will need to be adjusted.

**i** Before you make the adjustment:

- **Disarm your system** using your Key Fob (Press disarm) or Key Pad (Press disarm followed by the PIN code).
- **Disable the system tamper** as described on the left.
- If there is a gap between the wall and the tamper switch mechanism pack with a suitable spacing material.
- Once finished repeat the step 1 and 2 above.

- 3 If there is one short beep and flash when armed, the Siren is mounted correctly and the Siren installation is complete. Disarm the system and disable the tamper as described in the information box above.

## Mounting other Accessories

Find a location where the accessory is to be mounted, see section "Location Planning" for suggestions.

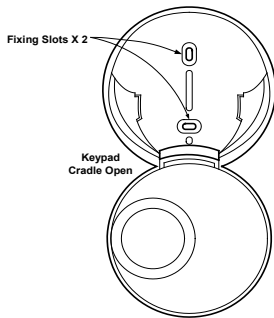
**i** Before proceeding to mount the accessories physically, it is useful to check that it is not out of radio range by doing a simple range test. Please ensure the system tamper is disabled.

- **Key Pad:** Hold the Key Pad in the desired location and arm and disarm the system.  
*(The siren will beep as confirmation.)*
- **Panic Button:** To prevent an alarm being triggered, put the Siren into learn mode first (see page 5, section 1). Hold the accessory in the desired location and press the emergency button.  
*(The siren should respond with a single beep.)*
- **All other accessories:** Hold the accessory in the desired location and press the learn/test button.  
*(The Siren should respond with a single beep.)*

When you are satisfied that the accessories work in your chosen locations, proceed with the installation as described in the next page. If the Siren does not respond, the location may be out of range, try alternative locations until reliable radio contact is obtained.

## Mounting the Key Pad:

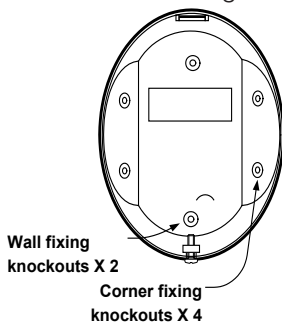
- 1 Drill holes into the wall using the fixing slots as a template.
- 2 Fit wall plugs into the wall and fix cradle with the screws provided.



- 3 Slide the Key Pad into the cradle
- 4 Close the cradle cover so the logo is facing you

### Mounting the PIR Motion Detector

- 1 Open the PIR by loosening the bottom screw. Knock out the relevant holes on the base where the plastic is thinner. The center two knockout holes are for flat wall mounting while the 4 side holes are for corner mounting.

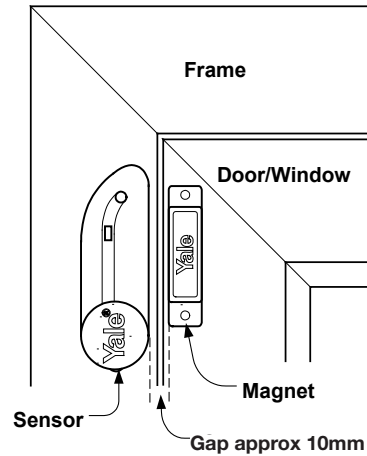


- 2 Drill holes into the wall using the knockout holes on the base as a template.
- 3 Fit wall plugs and secure the PIR base with the screws provided.
- 4 Fit the PIR back together and tighten bottom screw, the PIR installation is complete.

**i** The PIRs have a built-in sleep timer to save battery power. If there is no movement in front of the PIRs for 1 minute, the PIRs will become 'ready to signal' and movement will now be reported. The PIRs will sleep for 1 minute after reporting.

Any movement detected in sleep time will not be reported and will extend the sleep period by a further 1 minute.

### Mounting the Door/Window Contact



- 1 Find a location where the Door/Window Contact is to be mounted. It should be mounted between the door/window frame and the door/window as shown at the top of the opening. The magnet is to go on the door/window while the sensor is to be placed on the frame. Windows can be protected in a similar way to doors. Make sure the tamper switch spring is fully depressed.

**i** The gap between the magnet and sensor should be approximately 10mm when closed (depending upon the actual environment).

Simple test to see whether the magnet is in range of the sensor: hold the magnet and sensor in place and then pull them apart. If the sensor LED lights up it implies the two items are within range.

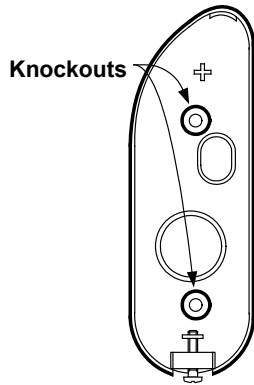
### Mounting using adhesive pads

- 1 Clean the mounting surface with a suitable degreaser agent.
- 2 Remove the protective film from one side of the adhesive pad and apply to the back of the sensor and magnet
- 3 Remove the remaining protective film and firmly press into place.
- 4 Test sensor by pressing the test button and opening and closing the door/window. The LED should light when the door/window is opened. Installation is complete.

---

### Mounting using screws and wall plugs

- 1 Loosen the bottom screw and open the Door/Window Contact.
- 2 Knock out the holes on the base as shown.
- 3 Drill holes into the mounting surface using the holes in the knockouts on the base as template.
- 4 Fit wall plugs (if required) and secure with the screws provided.
- 5 Fit sensor back together and tighten screw.
- 6 Test sensor by pressing the test button and opening and closing the door/window. The LED should light when the door/window is opened. Installation is complete.



**i** The tamper switch will automatically reactivate after one hour. Alternatively you can enable the tamper switch manually (optional).

See Page 10, Table 1 and Table 2 for manual tamper switch reactivation using Key Pad or Key Fob.

### Mounting the Panic Button

- 1 Break through the knockouts (where the plastic is thinner).
- 2 Using the holes as a template, drill holes in the surface and insert wall plugs if fixing into plaster or brick. Screw the rear case to the wall.
- 3 Replace the cover and tighten the screw.

### Mounting the Smoke Detector

- 1 The base has two mounting slots. Using the slots as a template, drill holes and insert the wall plugs if fixing to plaster. Screw the rear case to the ceiling using the screws provided.
- 2 Replace the cover.



# 5 Using the system

Arm and disarm the system and practice using it. Trigger the alarm by arming the system and opening protected doors/windows and walking past PIRs. Now's the time to set your PIN code and show the rest of the family how simple it is to use.

## Arming the system

**Key Pad/Key Fob:** Press **arm**  
*(The siren will beep and flash once. There will be no audible countdown.)*

- **Key Pad** will arm the system with a 20 seconds exit period. All detectors will be ignored (except for the tamper switches). The system can be armed when inside the protected area of your premises.
- **Key Fob** will arm the system instantly without a 20 second exit delay. Any detector activated afterwards will trigger an instant alarm. The system should be armed when outside the protected area of your premises.

## Disarming the system

**Key Pad:** Press **disarm** followed by your **PIN code**  
**Key Fob:** Press **disarm**  
*(The siren will beep and flash twice.)*

- **Key Pad:** If the system has been armed with a Key Pad there will be a 20 second entry period started when the first detector is activated (usually a window/door contact on the main point of entry). During this entry period all detectors will be ignored. The Siren will beep once when the first detector is triggered.
  - If the system is not disarmed before the entry period expires, the alarm will be activated.
  - The system does not have an audible countdown during the entry period.
- **Key Fob:** If the system has been armed with a Key Fob there will be no 20 second entry period and any detector activation will give an instant alarm.
  - The system should be disarmed from outside the protected area of your premises.

## Stopping the Siren

**Key Pad:** Press **disarm** followed by your **PIN code**  
**Key Fob:** Press **disarm**  
*(The Siren will be silenced and then beep and flash twice.)*

## Changing your Key Pad PIN

- 1 Enter setting mode: Press the **Panic button A**, followed by entering the current **PIN code** (factory default code is 0000).  
*(The LED will now flash continuously.)*
- 2 Press **panic button B**.
- 3 Enter new 4-digit **PIN code**.
- 4 Press **Arm** button to confirm.
- 5 Exit setting mode: Press **disarm** twice to quit the changing code process, or wait for 5 minutes for the Key Pad to quit test mode automatically.  
*(The LED will now stop flashing.)*

- If the PIN code doesn't change, repeat the above procedure quickly without gaps.
- The Key Pad will lock out for one minute after four failed attempts to enter the PIN code.

## Tamper alarm warning

If any device tamper switches are disturbed a tamper alarm will be activated with the Siren sounding and the strobe flashing. The alarm can be silenced as described in "Stopping the Siren".

- If there is a persistent Siren tamper fault then a series of 5 pips and flashes will be given when the system is armed, then the Siren should be checked for any mounting problems and if the Siren lid is secure.

## Previous alarm warning

Should there be an alarm that was triggered and expired (while the user was away), the Siren will sound and flash for 3 seconds after disarming (user returning home).

### My PIN code:

*(write your PIN code here so you don't forget it)*

## Using the Panic Button

**Activate:** Press and hold **panic button** for 2 seconds, the LED will light briefly and the Siren will be activated.

**Silence:** press and hold **panic button** for 10 seconds, the LED will light briefly and the Siren will be silenced.



Please note that silencing the alarm with the panic button does not disarm the system. If the alarm is armed prior to activation, the system will re-arm after being silenced with the panic button.

## Using the Smoke Detector

The Smoke Detector will indicate a fire by sounding its built-in siren, lighting the LED and activating the external Siren and strobe.

### -Smoke detection

When smoke is detected the device will activate for a minimum of 10 seconds with a two tone alarm and flashing LED for a local fire alarm. The detector will also activate the external Siren and strobe.

- Pressing the test button when in an alarm condition will silence the alarm for 10 minutes, it will automatically resume smoke detection again after this period.

### -Testing

Smoke Detector testing should be done on a regular monthly basis. Pressing the test button will make the LED flash, the audible sounder chime and will send a radio test signal to the Siren when the button is released. If nothing happens after pressing the test button then change the batteries.

### -Recalibration

The Smoke Detector might need recalibrating after time to ensure it is working at its optimum. This is done by pressing and holding in the test button until the LED flashes and it beeps after 10 seconds. The detector will then start its self-calibration routine.

### Key Pad Modes:

Table 1

#### Entering setting mode:

Press **Panic button A** followed by **PIN code** (factory default is 0000). You can now select different function. (The LED on the keypad will start flashing)

#### Function setting:

Press **Panic button A**, followed by one of the following number key:

- 1 **Send learning/testing signal**
- 2 **Disable Siren tamper**
- 3 **Enable Siren tamper**
- 4 **Enter learn mode** (not suitable for first time set-up)
- 5 **Exit learn mode**
- 7 Key Pad to work with control panel based system.
- 8 Key Pad to work with siren based system.

#### Exiting setting mode:

Press **disarm** twice. (The LED will now stop flashing. If not, press disarm twice again)

### Key Fob Modes:

Table 2

#### • Sending learn signal

Press any key except the emergency button.

#### • Siren tamper (Enable)

Press and hold down **Arm** and **emergency** for 5 seconds.

#### • Siren tamper (Disable)

Press and hold down **Arm** and **Home** for 5 seconds.

#### • Learn mode (Enter)

Press and hold down **Home** and **emergency** for 5 seconds.

#### • Learn mode (Exit)

Press and hold down **disarm** for 5 seconds.

# Adding accessories

To provide additional protection you can add extra Door/Window Contacts, PIRs, Key Fobs, Key Pads, Panic Buttons and Smoke Detectors. These are available separately from your local stockist.



## Adding devices for the first time

See section 3 (page 5) for first time system installation.

## Adding devices to an already installed system

The installed system will be controlled by either a Key Fob(s) or a Key Pad(s).

### Key Pad

**1 Enter Setting mode:** Press **Panic button A** followed by the **PIN code**

*(Indicated by a continuously flashing LED.)*

**2 Switch OFF system tamper:** Press **Panic button A** followed by **2**

*(The Siren will beep in response.)*

**3 Enter learn mode:** Press **Panic button A** followed by **4**. *(The Siren will beep and flash in response.)*

**4 LEARNING:** Press accessory learn/test buttons (see section 3, step 2) to trigger learning-in signals.

*(The Siren will beep and flash when each device is learnt in.)*

**5 Exit learn mode:** When all the accessories have been learnt in, press **Panic button A** and **5** to quit learn mode.

**6 Switch ON system tamper:** Press **Panic button A** and **3** to re-arm tamper protection.

**7 Exit Setting mode:** Press **Disarm** twice to exit.

*(The Key Pad LED will now stop flashing.)*

### Key Fob

**1** Press the **Arm** and **Home** buttons together and continuously for 5 seconds until the LED stops flashing, to switch off the tamper while installing the new device.

*(The Siren will beep in response.)*

**2** Press the **Home** and **Emergency** buttons together and continuously for 5 seconds until the LED stops flashing.

*(The Siren will beep and flash in response.)*

**3** Press accessory learn/test buttons (see section 3, step 2) to trigger learning-in signals.

*(The siren will beep and flash when each accessory is learnt in.)*

**4** When all the accessories have been learnt-in press and hold the **Disarm** button to quit learn mode.

**5** Press the **Arm** and **Emergency** buttons together and continuously for 5 seconds until the LED stops flashing to re-arm tamper protection.

# Changing the batteries

---

Always use alkaline batteries or the correct type of coin cells as replacements because any other battery can cause problems with the operation of the system. Ensure the correct steps are taken when changing batteries in tamper protected devices.

## Siren

The siren will produce a series of pips and flashes when arming and disarming the system when the batteries start getting low. After the warning the batteries will have about enough energy for 1 month's normal operation before exhaustion.

- 1 Switch off tamper protection as described in section 4.

The batteries are changed as follows:

- 2 Remove the Siren lid and switch off the Siren power.
- 3 Unscrew the four screws on the battery compartment lid and remove.
- 4 Remove the four batteries and replace them with four fresh alkaline "D" batteries.
- 5 Switch on Siren power and check that the Siren beeps and flashes.  
**Warning** After the batteries have been changed the tamper will become active again, either be very careful when fitting the siren cover or switch off the tamper protection again.
- 6 Replace battery compartment lid and screws and reattach Siren lid. Switch tamper protection back on.
  - *Siren case tamper conditions are also signalled by a series of beeps when the system is armed, but not when the system is disarmed (low battery warning produces a series of pips when armed and disarmed), take care not to confuse the two different conditions.*

## PIR Motion Detector

When the battery is low the LED will flash when any movement is detected. The batteries are changed as follows:

- 1 Switch off tamper protection as described in section 4.
- 2 Loosen the case screw and remove PIR sensor from base to reveal three AAA batteries.
- 3 Insert new alkaline batteries observing correct polarity.
- 4 Refit sensor on base and tighten bottom case screw. Switch tamper protection back on.
  - *PIR case tamper conditions are also indicated by a flashing LED, check the tamper before changing the batteries.*

## Door/Window Contact

When the battery is low the LED will flash when the door/window is opened. The battery is changed as follows:

- 1 Switch off tamper protection as described in section 4.
- 2 Loosen the case screw and remove Door/Window Contact from base to reveal battery.

- 3 Using a screwdriver gently lever out the old battery.
- 4 Insert new CR2032 coin cell battery with the + side uppermost.
- 5 Insert battery under the two tabs with finger and thumb until a click is heard.
- 6 Refit contact on base and tighten bottom case screw. Switch tamper protection back on.
  - Door/Window Contact case tamper conditions are also indicated by a flashing LED, check the tamper before changing the battery.

## Key Fob

When the battery is low the LED will glow dimly when any key is pressed. The battery is changed as follows:

- 1 Using a coin turn the battery cover anticlockwise to the unlocked position and remove cover and battery.
- 2 Insert new CR2032 coin cell battery with the + side uppermost.
- 3 Replace battery cover.
- 4 Press any key and check that the LED lights. If the LED lights the new battery installation is successful.

## Key Pad

When the battery is low the LED will glow dimly when any key is pressed. The battery is changed as follows:

- 1 Unscrew the two Key Pad case screws and remove Key Pad back to reveal battery.
- 2 Using a screwdriver gently lever out the old battery.
- 3 Insert new CR2032 coin cell battery with the + side uppermost.
- 4 Insert battery under the two tabs with finger and thumb until a click is heard.
- 5 Press a number key and check that the LED lights. If the LED lights the new battery installation is successful, screw Key Pad back on and the battery change is complete.

## Smoke Detector

The LED will flash and the sounder will beep every 30 seconds to signal low battery. Change the batteries as soon as possible with fresh AAA alkaline replacements.

## Panic Button

Remove the cover by loosening the fixing screw and insert a new CR2032 cell battery.

# Troubleshooting

---

## Siren

### Siren does not respond to Key Pad

- Key Pad low battery or bad connection. Check battery connections and polarity, if OK replace battery.
- Siren batteries are completely exhausted. Check Siren batteries by removing Siren cover, if there is no tamper alarm when removed, replace batteries with new alkaline equivalents.
- Key Pad not learnt-in. If Siren produces a tamper alarm when the cover is removed, and Key Pad is OK, learn-in the Key Pad.

### Siren produces a 3 second alarm when disarmed

- There has been a previous alarm and there might be an intruder still in the premises.

### Siren produces a series of pips when armed or disarmed

- The Siren has low batteries. Check that the Siren produces a series of pips when arming and disarming, indicating low batteries. Change batteries with new alkaline replacements.
- The Siren tamper switch has been disturbed. Check that the Siren produces a series of pips only when arming, indicating a tamper condition. Check that the Siren cover is firmly secured and the tamper switch plunger is in contact with the wall. If not use suitable packing material to fill gap.

### Siren produces an interrupted tone when sounding an alarm

- The Siren has low batteries. Change batteries with new alkaline replacements.

## Key Pad

### The Key Pad LED will not light when the arm key is pressed

- Battery is completely exhausted. Change battery with CR2032 coin cell battery replacement.

### The Siren will not respond to the disarm user code

- Ensure that the Key Pad mode is correct by entering test mode and pressing button "A" then "8".

### Forgotten user PIN code

- Remove battery and reinsert with the number "3" key pressed. The Key Pad will go back to the "0000" Key Pad code. The Key Pad will now have to be re-learnt into the Siren, see either "Programming the siren based system" or "Adding accessories" sections.

## PIR Motion Detector

### PIR does not respond to movement

- Previous movement has triggered the PIR sleep timer (see page 7) is preventing subsequent movement detection. Arm system and vacate protected room for at least 1.5 minutes before testing.

### PIR is slow to respond

- This is normal, the PIR has sophisticated false alarm filtering that will filter out random fluctuations and responds to genuine movement across field of view, it is less sensitive walking directly towards it.

### PIR gives false alarms

- Check pets have no access to protected area.
- Check that PIR is not pointed at sources of heat or moving objects, e.g. fluttering curtains.
- Check that PIR is not mounted above convector heaters or pointing directly at windows.

### PIR LED flashes

- Batteries are low or the tamper switch is disturbed. Check that the tamper switch spring is making contact with base. If the tamper switch is OK, change batteries with new alkaline replacements.

### PIR does not respond to movement after test/learn button has been pressed

- Batteries are completely exhausted. Change batteries with new alkaline replacements, LED will flash for 30 seconds while components initialise.

## Door/Window Contact

### Door/Window Contact LED flashes

- Batteries are low or the tamper switch is disturbed. Check that the tamper switch spring is making contact with the mounting surface. If the tamper switch is OK, change batteries with new alkaline replacements.

### Door/Window Contact does not respond to door opening after test/learn button has been pressed

- Batteries are completely exhausted. Change batteries with new alkaline replacements
- The magnet is too far away from the Door/Window Contact. Check that the gap between Door/Window Contact and magnet is not greater than 10mm.

For more information on this product and Yale Alarm Range visit [www.yale.co.uk](http://www.yale.co.uk)  
Consumer Support: [yale.co.uk/help](http://yale.co.uk/help)

# Specifications

---

## All Devices

### Environmental conditions

-10°C to 40°C, relative humidity  
70% non-condensing for all units  
except the external siren. Siren:  
-20°C to 50°C, relative humidity  
95% non-condensing

### Radio operational range

30m in a typical domestic  
installation, range can vary  
depending on building construction,  
device positions and RF  
environment

**Housings** ABS/polycarbonate

## Siren

**Siren output** 104dBA sound  
pressure @ 1m minimum

**Radio** 433.92MHz AM super  
heterodyne receiver with jamming  
detection

**Power supply** 6V, 4 x D alkaline  
batteries

## PIR Detector

**Alarm processing** Microprocessor  
controlled dual edge sequential  
pulse count with pulse length  
discrimination

**Radio** 433.92MHz AM transmitter

**Power supply** 4.5V, 3 x AAA  
alkaline batteries.

**Movement detection range** 12m,  
110°

## Door/Window Contact

**Radio** Microprocessor controlled  
433.92MHz AM transmitter

**Power supply** 3V, CR2032 lithium  
coin cell battery.

## Smoke Detector

**Radio** Microprocessor controlled  
433.92MHz AM transmitter

**Power supply** 6V, 4 x AAA alkaline  
batteries.

**Tested to** EN54

## Panic Button

**Radio** Microprocessor controlled  
433.92MHz AM transmitter

**Power supply** 3V, CR2032 lithium  
coin cell battery.

## Key Fob

**Radio** Microprocessor controlled  
433.92MHz AM transmitter

**Power supply** 3V, CR2032 lithium  
coin cell batteries.

## Key Pad

**Radio** Microprocessor controlled  
433.92MHz AM transmitter

**Power supply** 3V, CR2032 lithium  
coin cell battery.

Hereby, ASSA ABLOY Ltd., School Street, Willenhall, West Midlands, England WV13 3PW  
declares that the radio equipment type YES-ALARMKIT is in compliance with Directive 2014/53/EU.  
The full text of the EU declaration of conformity is available at the following internet address:  
[www.yalelock.com/smart-living/doc](http://www.yalelock.com/smart-living/doc)



### WEEE

Note: Waste electrical products and  
batteries should not be disposed of with  
household waste. Please recycle where  
facilities exist. Check with your local  
authority or retailer for recycling advice.



Issue no.1A

**THE YALE BRAND**, with its unparalleled global reach and  
range of products, reassures more people in more countries  
than any other consumer locking solution.

**THE ASSA ABLOY GROUP** is the world's leading  
manufacturer and supplier of locking solutions, dedicated  
to satisfying end-user needs for security, safety and  
convenience.