

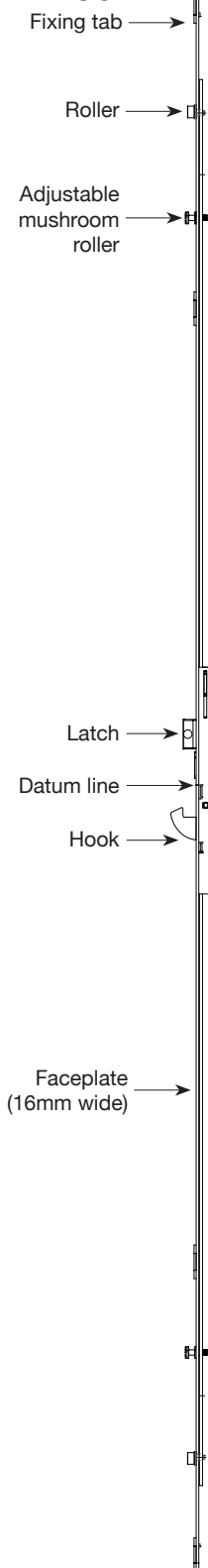


Replacement PVCu Door Lock

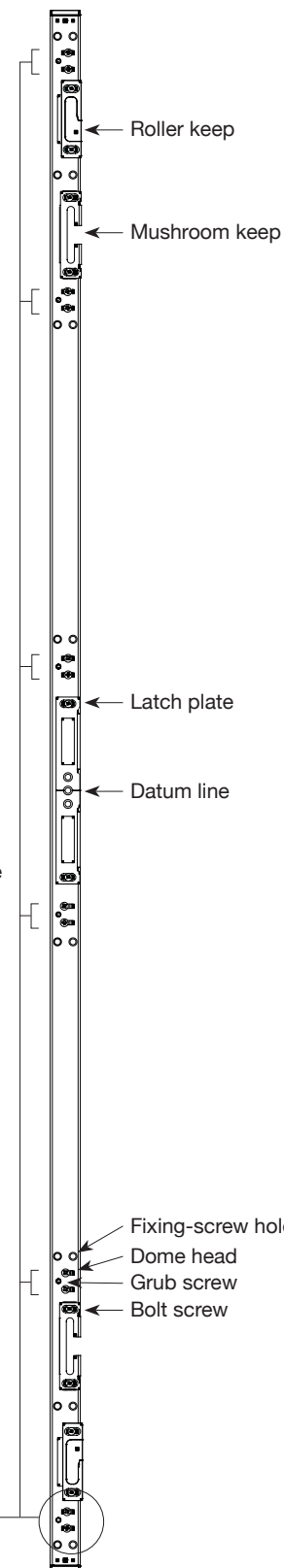
- Universal replacement lock designed to fit most PVCu doors

Pack contents

1x Lock



1x Keep



Before you begin...

Please read these instructions carefully...

Following the steps in the right order will make the installation much easier and help make sure your new lock is fitted properly.

Give yourself time...

Please ensure you give yourself plenty of time to install this product correctly and adjust if required.

Please Note

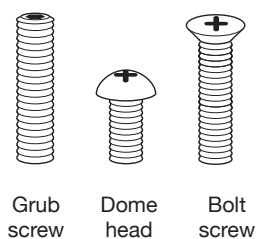
If at any point you feel you can not successfully complete the installation, you will find your nearest Yale Doormaster™ Expert at www.yale.co.uk/doormaster or you can call our helpline on 01902 364606.

Tools required:

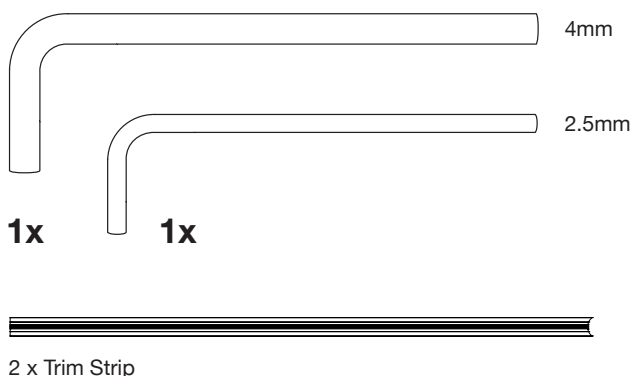
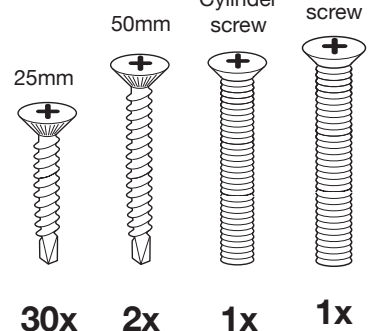
- Tape measure
- Pencil
- Cross-head screwdriver
- Flat-head screwdriver
- Drill and drill bits
- Saw (to cut plastic trim plates)

Fixings included:

Already assembled in keep



See screwpack
(for site installation)



Is this the right product for you?

Please ensure you have the right Yale Doormaster™ lock for your door by checking that you can answer 'Yes' to all the below questions:

- Is your door made of PVCu?
- Is the handle inside your door at the same height as the one on the outside?*
- Is it either 35mm or 45mm from the centre of the cylinder to the metal faceplate of your current lock (not the edge of the door)? **(See A)**

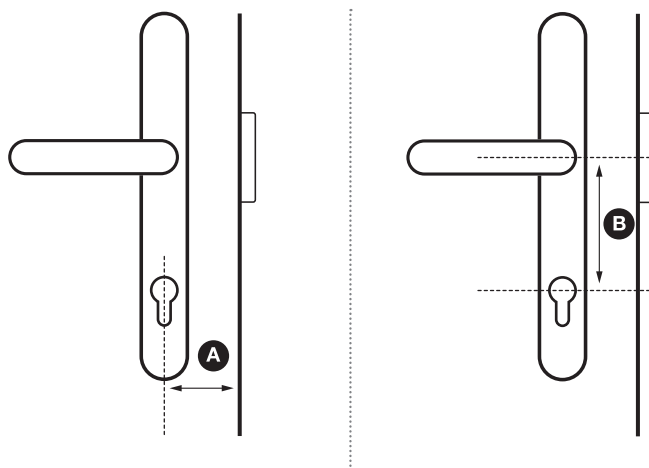
NOTE: This product comes in both 35mm and 45mm sizes so please check you have the right size for your door.

- Is the distance between the centre of your handle and the centre of the lock cylinder 92mm? **(See B)**
- Is the metal faceplate of your current lock 16mm wide? **(See C)**

*Please note:

If your handles are at different heights (for example the inner handle is higher than the outside one), you can still fit this product, but you will need to fit a new 92mm centre handle set when fitting this lock. Please visit www.yale.co.uk for more information about Yale replacement PVCu handles.

If you have any queries regarding handles please call the Yale Doormaster™ helpline on 0845 0710789



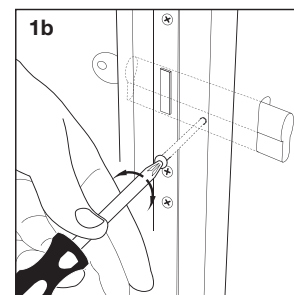
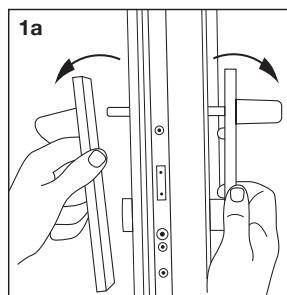
How to install your Universal Lock

Before starting, it may help to watch our 'How to' video. Go to www.yale.co.uk/doormaster or use the QR code



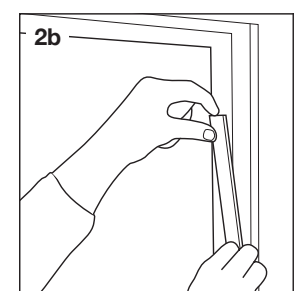
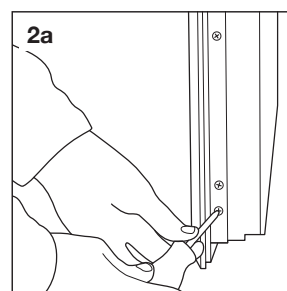
Step 1: Remove the handle and cylinder

- Open your door and secure it in the open position.
- Where possible lift the handles as far as you can so that the lock is in the locked position.
- Undo the screws from the internal handle.
- You should now be able to remove both handles and put them plus the screws aside for refitting later **(1a)**.
- Take out the handle spindle (the 8mm square bar) and set this aside.
- Take out the cylinder screw **(1b)** and discard. A new cylinder screw is provided.
- Take out the cylinder. To do this, insert the key on the inside of the door and rotate about 5 degrees before pulling the cylinder out of the door.
- Leave the key in the cylinder and put it aside for refitting later.



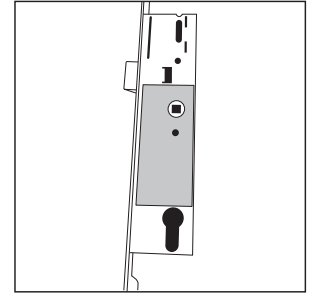
Step 2: Remove your old lock and keeps

- Remove the fixing screws along the metal faceplate on the edge of your door. The best way to do this is to start at the bottom and work upwards but please note that screws either side of any hooks/bolts should not be removed **(2a)**.
- You should now be able to easily take the old lock out of your door. If it does not come out easily, check that all fixing screws have been removed.
- Remove all the screws from the keeps (the metal plates on the frame) and remove keeps from the frame **(2b)**.
- All these items can be discarded once installation is successfully completed.



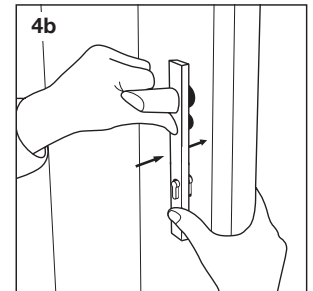
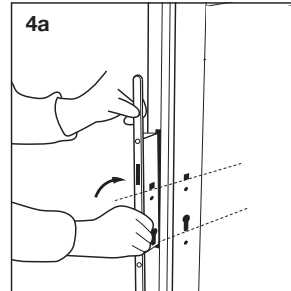
Step 3: Prepare your Universal Lock for installation

- Compare your Universal lock with your old lock and check which direction the latch faces. If necessary, change the latch on your Universal lock to match the old one by following the instruction label visible on the Universal lock.



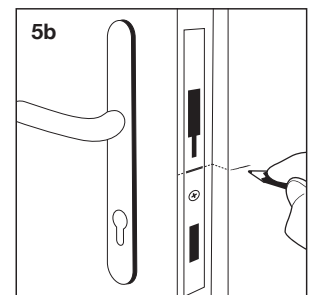
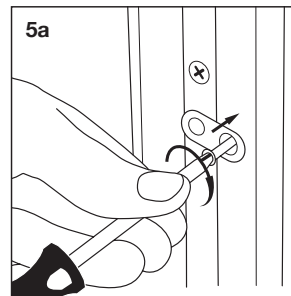
Step 4: Install your Universal Lock

- Put your new Universal lock into the door where the old lock went. If the hole for your old lock is too small, you may need to carefully remove some excess plastic.
 - Line up the new lock so that the cylinder and the square spindle holes are visible through the holes in the door face (4a).
 - Push your cylinder into place reversing what you did in Step 1.
 - Line up the fixing hole for the cylinder with the countersunk hole in the lock faceplate, and fasten it in place with one of the new cylinder screws provided for 35mm backset locks,
- use the short cylinder screw. For 45mm backset locks, use the large cylinder screw.
- Insert the old handle spindle through the lock, leaving an equal amount on either side of the door.
 - Slide the handles onto the spindle inside and out and then carefully push them together around the cylinder (4b).
 - Secure the handles using the old screws, ensuring that screws are inserted from the internal door face.



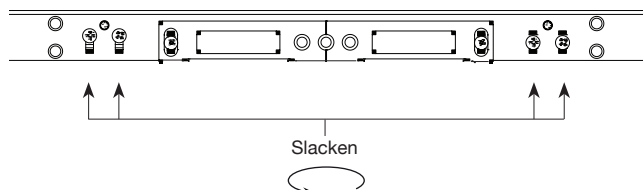
Step 5: Install your Universal Lock

- Using the new fixing screws provided, secure the Universal lock into place. Working from the centre of the lock outwards, making sure the screws are driven horizontally through the faceplate.
- If there is a gap in the door behind a fixing position, use the fixing tabs along the length of the faceplate to make sure the lock is properly secured. It is essential that you use as many fixing positions as possible (5a).
- **Now check your Universal Lock functions correctly:**
 - Lift the handle and make sure the rollers and centre hook can move freely.
 - Make sure you can turn the key to operate the deadlock and that when deadlocked the handle does not open the lock.
 - Turn the key back to unlock the door and make sure the handles now open the lock.
- Carefully close the door and make sure the rollers do not clash with the frame. Repeat above checks to make sure your lock still operates properly.
- If the centre hook is not operating properly you may need to carefully remove some excess plastic from the frame.
- Once you are satisfied that everything is working properly, close the door slightly and using a pencil, trace the datum line from the faceplate onto the frame. The datum line is located between hook and latch (5b).



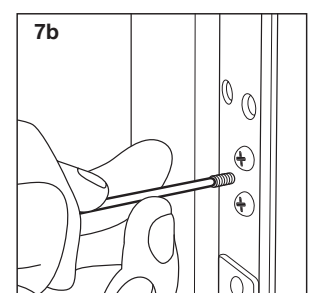
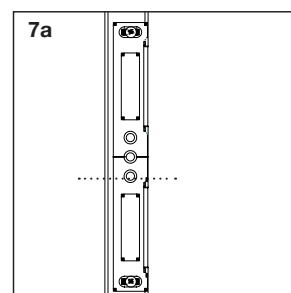
Step 6: Prepare your Universal keep

- The 'keep' is the metal plate in the frame of your door that the hook, rollers and mushroom rollers locate into.
- Slacken but do not remove the dome head screws along the length of your new keep. (See illustrated pack contents.)



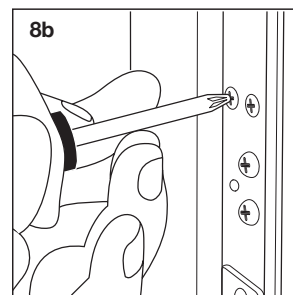
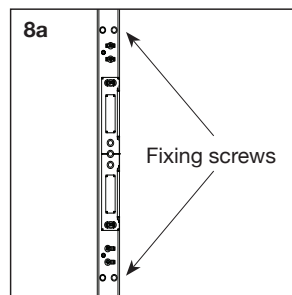
Step 7: Align your Universal keep with the frame

- Position the keep so the datum line at the centre of the keep is level with the pencil line on the frame (7a).
- Place the keep against the door frame, ensuring the front edge is flush with the frame edge.
- Move the Uni-packer™ system plates as required so they locate into the groove in the frame – this will locate the keep on the frame during fitting and operation.
- Tighten the Uni-packer™ system dome head screws to hold the keep flush. Adjust the grub screws to make the keep flat and level. In some cases, these grub screws are not required and so can be removed completely (7b).



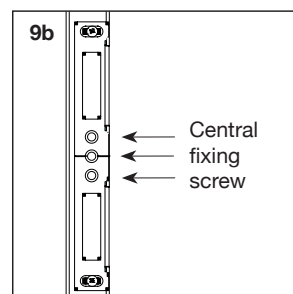
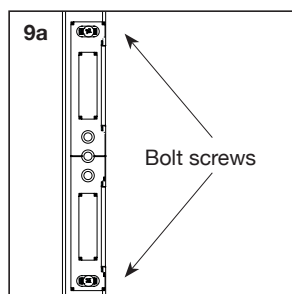
Step 8: Align your Universal keep with the frame

- Once the keep is fully aligned, secure it in place using the new 25mm fixing screws provided, except the central fixing screw in the middle of the latch plate (**8a & 8b**).
- If the fixing holes are over a gap in the frame, use the longer 50mm fixing screws provided. As a last resort, omit that screw.



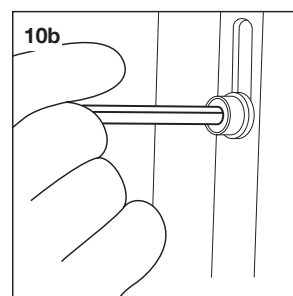
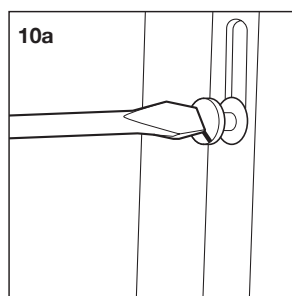
Step 9: Check your Universal keep

- Carefully close the door and operate the lock to make sure the hook and latch fit into the keep securely.
- If not, slacken the latch plate bolt screws, adjust the latch plate and tighten bolt screws until they do (**9a**).
- When happy, add the central fixing screw in one of three holes in middle of latch plate (**9b**).



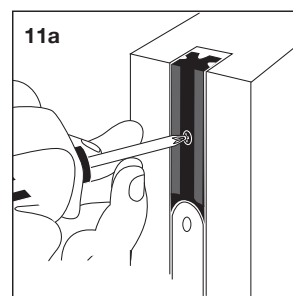
Step 10: Adjust your Universal keep and lock

- Lift the handle to ensure all the rollers and mushroom rollers locate into their keeps securely. If necessary, slacken the bolt screws, adjust the keep plates and re-tighten to make sure the door compresses the rubber draught/weather seals when the handle is lifted.
- Use a flat screwdriver to adjust the height of the mushroom rollers for improved engagement into the keep if required (**10a**).
- Use the 4mm Allen key to adjust the rollers for improved compression if required (**10b**).



Step 11: Install trim strips

- Clip strip into door groove so that curved end locates against the faceplate (**11a**).
- Mark excess strip ensuring any apertures in the door are covered.
- Remove from door & carefully cut off excess strip
- Re-insert trim to door and secure in place with screws if required (drill pilot hole first)
- Repeat for other end of door.



If at any point you feel you can not successfully complete the installation, you will find your nearest Yale Doormaster™ Expert at www.yale.co.uk/doormaster or you can call our helpline on 0845 0710789.

Doormaster™ Universal 3183402001 Issue 1A
© 2012 ASSA ABLOY Ltd

Yale The world's favourite lock since 1843
School Street, Willenhall, West Midlands WV13 3PW
www.yale.co.uk/doormaster T. 01902 364606

Will Yale Doormaster™ Universal fit my door?

Yale Doormaster™ Universal has been designed to fit most PVCu Doors, but to be sure it will fit your door just take 3 simple measurements:

1. Measure the backset

Measure the distance **A** between the centre of the cylinder and the metal faceplate of the lock (not the edge of the door).

Yale Doormaster™ Universal replacement locks come in 35mm and 45mm backsets – so if your existing lock is either of those backsets just choose the same size lock.

2. Measure the Centres

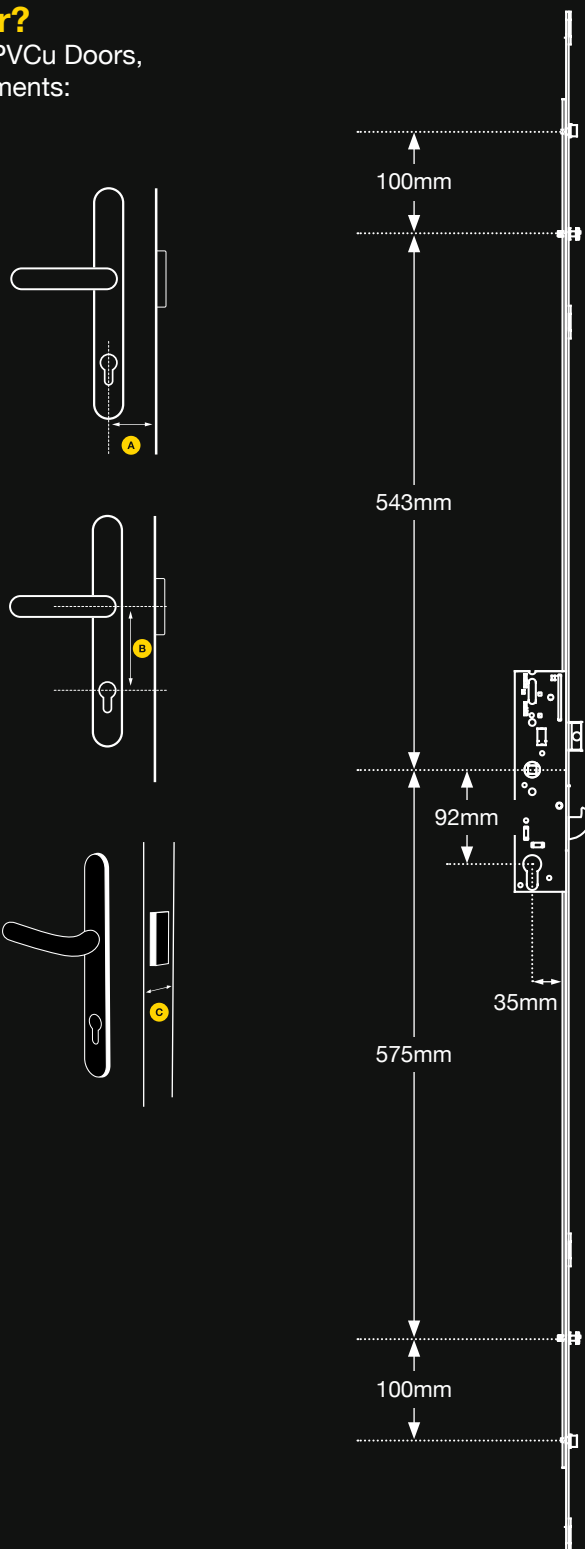
Measure the distance between the centre of the cylinder and the centre of the door handle.

B must be 92mm for Yale Doormaster™ Universal to fit your door.

Please note: If the handles inside and outside the door are at different heights, measure the centres on both. If either are 92mm you will be able to fit this lock, but will require new handles – see Yale Replacement PVCu Door Handles.

3. Measure the faceplate

Measure the metal faceplate on your existing lock – this must be 16mm for Yale Doormaster™ universal to fit your door.



Doormaster™ Universal 11439UNI/12/11
© 2011 ASSA ABLOY Ltd



Find out more about Yale Doormaster™ by visiting our website.
yale.co.uk/doormaster