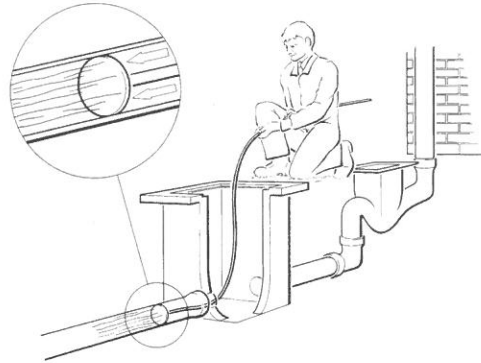
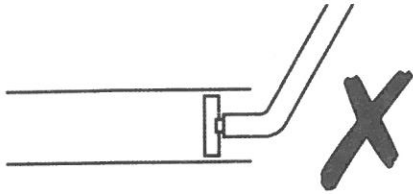


Drain Cleaning

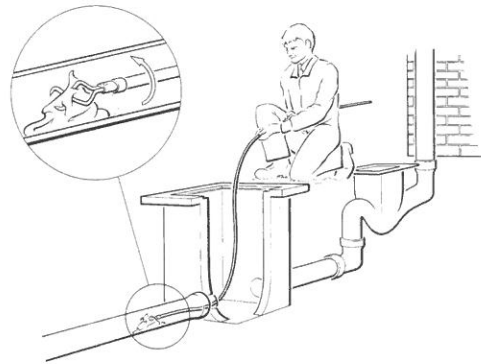
The direction in which the drain runs should be established, usually this is in a straight line. Remove the inspection cover nearest to the house. This may reveal a full gully but the blockage is probably further along the run. Continue to remove the covers until the system looks clear, the blockage will be in the previous section of the run. Cover the drain outlet of this inspection chamber to avoid another blockage forming when the debris is released. Work from this clear chamber, rodding back up the run towards the house. To release the debris use the rods and tools ensuring clockwise pressure is maintained on the rods. Remove the rods completely once the blockage is cleared and then flush the system through with water to ensure the flow is clear.

Clearing a blocked drain is not a dangerous job as long as it is carried out in a sensible way. Excessive force must not be used at any time and the rods must not be rammed through severe bends.



Plunger (Drain Usage)

Builds up pressure of water which forces obstruction clear.



Double Worm Screw (Drain Usage)

Pierces blockages such as paper or rags and the obstruction is drawn back.

Caution: Layouts of drains will vary. Seek professional advice if in any doubt. Never use excessive force when carrying out any cleaning process.

Safety Warning: Always activate rods in a clockwise direction. Use protective gloves and eyewear. Keep all tools out of the reach of children.