



Over 20 years' experience in manufacturing, product development and distribution in the plumbing & heating industries.

Product Guide

Immersion Heaters & Accessories



See www.teslauk.com for more products

Choosing the right immersion heater

There are a number of factors that need to be considered when selecting the right immersion heater for your application. Whether it be a vented, unvented, economy 7, solar system, copper or stainless steel cylinder and side or top mounted.

Selection of the boss/head size, kW requirement, length of the immersion heater, and finally the correct immersion heater material that is conducive to the water hardness in your geographical area.

Information of suitability and a map illustrating levels of water hardness are detailed below.

If you need assistance in selecting the correct element please call our technical helpline: 0121 686 8733.




All our immersion heaters are BEAB Approved and compliant with BS EN 60335-2-73 and are fitted with a dual function thermostat to control water temperature and protect against over temperature.

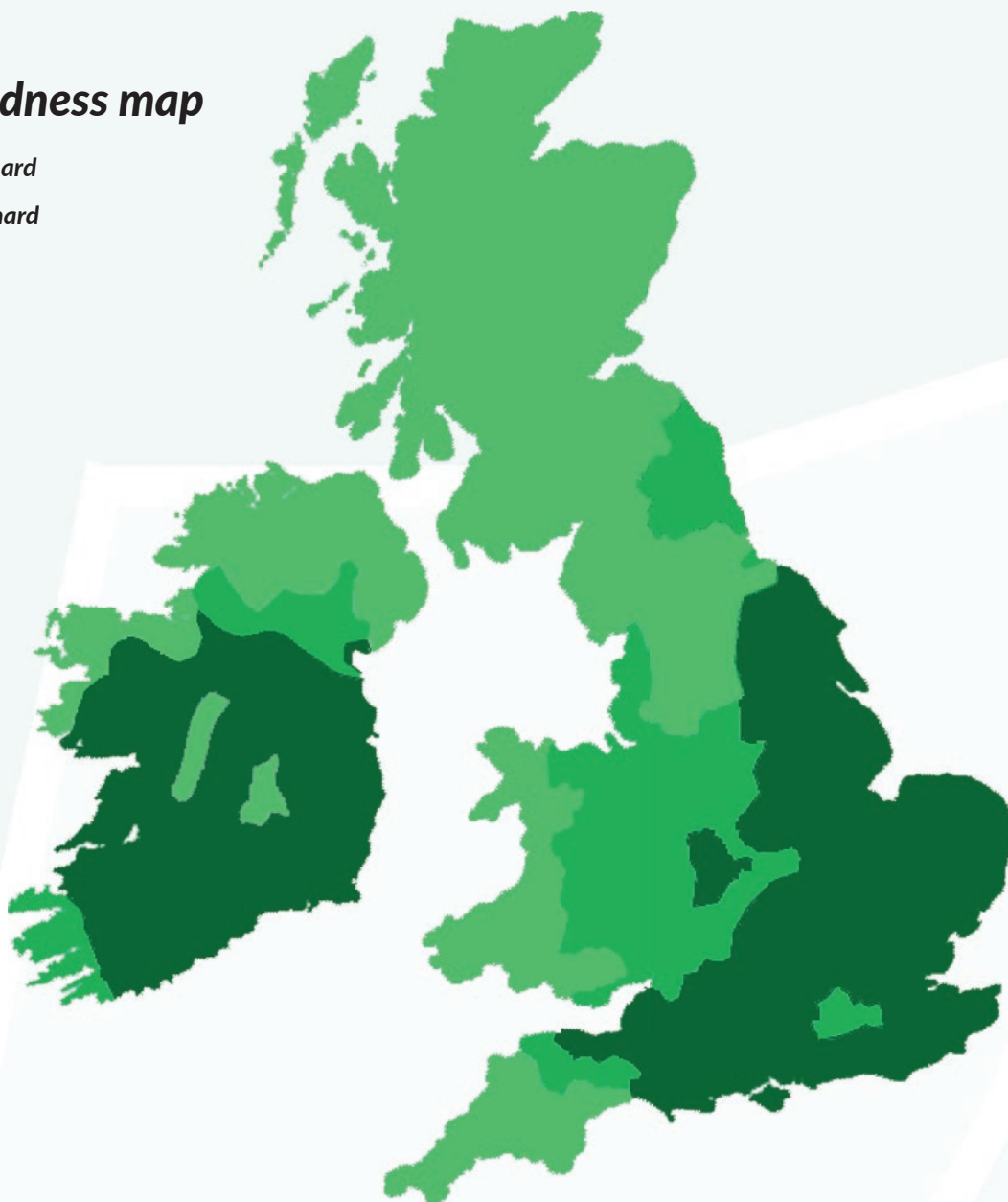
Soft water areas - Fit copper.

Moderate to hard - We recommend fitting either incoloy or titanium.

Hard to very hard - Incoloy will suffice but we highly recommend fitting titanium which will last longer.

Water hardness map

-  *Hard to very hard*
-  *Moderate to hard*
-  *Soft*



Immersion Heaters & Thermostats



Intertek

Immersion heaters by Tesla UK are manufactured and approved to EN 60335-2-73.
All Tesla Immersion Heaters are supplied with a dual safety thermostat, instructions and sealing washer.

- Boss size: 2.1/4" • Rating: 3kW, 240v unless otherwise stated

Copper



Note:

- Not suitable for stainless steel cylinders
- For soft water areas only

Code	Element Size	Thermostat
TIH505	11"	7"
TIH510	14"	7"
TIH515	18"	11"
TIH520	23"	11"
TIH525	27"	18"
TIH530	30"	18"
TIH535	36"	18"

Titanium

with incoloy thermostat pocket



Note:

- Suitable for stainless steel & copper cylinders
- Suitable for hard to aggressive water areas

Code	Element Size	Thermostat
TIH565	11"	7"
TIH570	14"	7"
TIH585	27"	11"

Unvented 1.3/4"

Suitable for unvented cylinders

- 'O' ring included



Code	Element Size	Material
TIH476PI	14"	Incoloy
TIH572PI	14"	Titanium

Incoloy/Copper



Note:

- Not suitable for stainless steel cylinders
- Suitable for medium to hard water areas

Code	Element Size	Thermostat
TIH540	11"	7"
TIH545	14"	7"
TIH547	18"	11"
TIH548	23"	11"
TIH550	27"	18"
TIH555	30"	18"
TIH560	36"	18"

Dual Heaters

Copper

- Includes dual safety thermostat
- Includes 1m cable
- 3kW/2kW 240v
- 2.1/4" BSP brass boss



Code	Element Size	Thermostat
TIH460	24"/11"	18"
TIH465	27"/11"	18"
TIH467	36"/11"	18"

External Heater

Also known as Willis/Geyser

Includes dual safety thermostat



Code	Description
TIH305	Willis heater

Incoloy



Note:

- Suitable for stainless steel & copper cylinders
- Suitable for medium to hard water areas

Code	Element Size	Thermostat
TIH640	11"	7"
TIH645	14"	7"
TIH646	14" / 30" double bend	7"
TIH647	18"	11"
TIH648	23"	11"
TIH650	27"	18"
TIH655	30"	18"
TIH660	36"	18"

*TIH646 - 14" long but with the surface area of a 30" element making it more effective and durable. Can be mounted horizontally.

Rod Thermostats

- BEAB approved
- Safety cut out
- 15A, 240V
- Resettable



Code	Size	Temp. Range
TS220	7"	10-70°C
TS225	11"	25-70°C
TS230	18"	20-70°C

Plug-in Thermostats

Suitable for use with upper or lower Immersion Heaters on Unvented Cylinders.

Dual Function with adjustable trip and safety cut-out.

CE marked

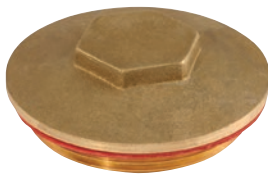


Code	Size	Temp. Range
TSUNI300	11"	15-65°C



Accessories

Plugs



IH214	Immersion plug & washer 2.1/4"
IH134	Immersion plug & washer 1.3/4"

Washers



IH01	Immersion heater washer 2.1/4"
OR476	WRAS approved 'O' Ring 1.3/4"

Flanges



Code	Size/Description
BF445	Mechanical Flange & Washer 2.1/4"
BF446	Mechanical Flange Washer 2.1/4"
IH2141	Sweated Flange 2.1/4"

Cylinder Flanges

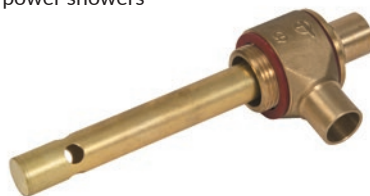
- Reduces aeration of hot water
- Reduces airlocks in shower pumps & power showers
- Integrated air baffle



Ultimo Cylinder Flange

Code	Size
UF221M	1" MI x 3/4" FI BSP

- Reduces aeration of hot water
- Reduces airlocks in shower pumps & power showers



Leamington Flange

Code	Size
LF34M	3/4" BSP male
LF1M	1" BSP male
LF1F	1" BSP female

Spanners



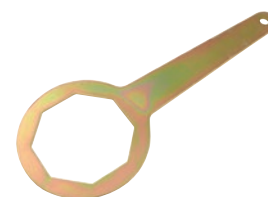
Box Spanner

Code	Description
TL070	with rod



Cranked

Code	Description
TL015	Cranked



Flat

Code	Description
TL018	Flat

Can't find what you're looking for?

With almost 100 years of knowledge and experience in the immersion heater industry, our sister company Thermco Electricals Ltd can provide a comprehensive solution to domestic, commercial and bespoke applications.

Thermco continue to develop high quality products in partnership with their customers in order to provide innovative and reliable products through continuous product development.

Please get in touch on 0121 686 8711 to discuss your requirements.



Thermco Electricals
THE IMMERSION HEATER SPECIALISTS

Identifying a fault

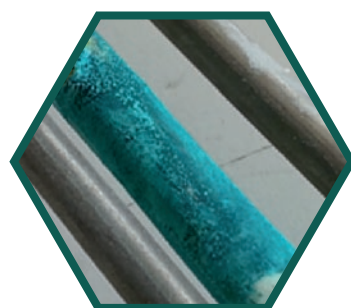
Please note:

The examples shown are not genuine faults of the product and therefore are not covered by the product guarantee.

A full list of FAQ's can be found on our website - www.teslauk.com

Limescale / Calcification

We recommend you fit an Incoloy element in areas of moderate to hard water and a Titanium element in areas of hard to very hard water. You can also reduce the rate of calcification by fitting the correct length of element, setting the thermostat to the lowest possible temperature and using the element for the shortest time possible.

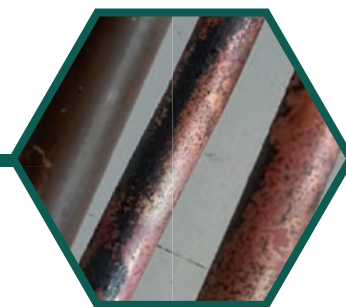


Copper use in stainless steel cylinders

If any copper parts are fitted inside a stainless steel cylinder, there will be an electrolytic reaction causing the copper parts to corrode. Stainless steel cylinder manufacturers advise use of an Incoloy or Titanium element but with an Incoloy or stainless steel thermostat pocket. Warning: Incoloy & Titanium elements with copper thermostat pockets are also available in the marketplace and these are not suitable for use in stainless steel cylinders.

Insufficient water coverage

If an element is run without sufficient water coverage, the sheath will anneal (picture shows example of a copper element which has annealed). This will lead to decreased performance of the product and/or failure by splitting or burning out.



Thermostat tripping out

The reset device in our thermostats is calibrated to read ambient temperature. Nuisance trip outs can occur for a number of reasons. For example:

- 1) If the cylinder is enclosed in a small airing cupboard with no ventilation this can cause heat build-up.
- 2) A shower pump can draw water from the cylinder faster than it is replenished causing an air lock/insufficient water coverage.
- 3) Flat top cylinders have also been known to cause issues as air can become trapped under the head of the element.



Technical Helpline
+44 (0)121 686 8733

STAY CONNECTED

Here at Tesla UK Ltd, we are often launching new product into the market.
To keep up to date with our launches, stay connected.



Follow us on Twitter
@TeslaUK



Follow us on LinkedIn
TeslaUK

Visit www.teslauk.com for

- Product Details
- Technical Data
- FAQ's
- Product Guides
- Product Instructions





The Teslatun eliminates the need to install both a tundish & trap providing you with the all-in-one solution, saving you time & money.

THE ALL IN ONE SOLUTION



- 1 15mm inlet (nut & olive included)
- 2 Unique design to allow visual means of discharge, air break to drain & built-in cover to prevent splash back
- 3 Specially designed seal that prevents any smells or gases entering the building when the discharge is connected to a soil, vent or other waste pipe.
- 4 22mm outlet (nut & olive included)

- ✓ Eliminates the need to install a tundish and a dry trap
- ✓ Time, cost & space saving
- ✓ Operates under full bore discharge or with only a few drips
- ✓ Prevents odours & gases from entering the building
- ✓ Safe and visible means of discharge
- ✓ Up to 18 litres per minute



@TeslaUK
Tweet us your installs! #teslatun

www.teslauk.com





Tesla UK
LIMITED

www.teslauk.com



@TeslaUK

Sales: +44 (0) 121 686 8711
Technical: +44 (0) 121 686 8733
Fax: +44 (0) 121 686 8712
Email: sales@teslauk.com

Tesla UK Ltd
Unit 3b, First Avenue
Minworth
Sutton Coldfield
West Midlands
B76 1BA