

Twin 13A Unswitched Socket + 2 Smart* 5V DC 2100mA USB Charging Ports***Smart USB Charging Ports**

This product features VARILIGHT Smart Port technology making it suitable for all types of device.

The USB port detects the device to be charged and optimises its output accordingly to achieve the fastest possible charging speed.

Please read these instructions carefully before beginning any electrical work and retain them for future reference. The product should be installed in accordance with the current addition of the IEE Wiring regulations. If in doubt, consult a qualified electrician.

1. Always switch OFF the mains supply and remove the appropriate fuse or switch off the appropriate circuit breaker before beginning electrical work.
2. Always use cable of the correct rating and type.
3. The layout of the terminals may differ between fittings so check the location of terminal connections carefully before wiring.
4. Make electrical connections according to the relevant diagram ensuring no bare wires protrude from the terminals.
5. If the product has an earth terminal connect the fixed earth wire to it and then connect a short length of wire from the earth terminal on the product to the earth terminal on the wall box. The earth wire should be sheathed with green and yellow sleeving.
6. Screw plate to wall using fixing screws supplied.
7. Switch on the mains supply.

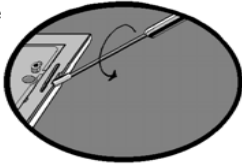
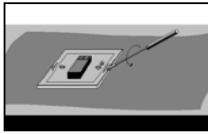
! **WARNING:** Do not apply products with metal faceplates directly to freshly plastered or damp surfaces as product may tarnish. If in doubt, use polythene as a temporary gasket to protect the product. Do not use masking tape on metal faceplates.

Guarantee: If this item becomes defective within 10 years of purchase, Varilight undertakes to repair or replace the item, at its discretion, solely as a result of faulty materials or workmanship, provided that the unit has been correctly fitted according to the instructions, has not been used overloaded beyond its rating, tampered with or taken apart. Pack the unit securely and return it to: Customer Services, Carylls Lea, Faygate, Horsham, West Sussex, RH12 4SJ, UK together with a letter stating the guarantee registration number below, the date and place of purchase, the type and wattage of the lighting or other load being controlled and the details of the fault. This guarantee states Varilight's entire liability, which does not extend to cover consequential loss or damage or installation costs arising from a defective product. This guarantee does not in any way affect the statutory rights of the purchaser and is offered so that you may have the benefit of our technical facilities.

Guarantee Registration Number: WU16

Instructions for Fitting Dimension Screwless Accessories

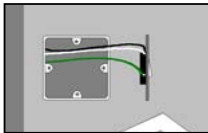
1. After removing from packaging place the product face down onto a soft cloth or towel. Remove the decorative front plate by inserting the tip of a screwdriver into one of the short slots (see diagram) so the screwdriver is between the inside edge of the decorative plate and the outer edge of the clear plastic. Apply gentle pressure and twist the screwdriver one quarter turn (as shown).



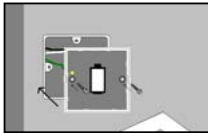
Lift out switch assembly.

2. Ensure wall is flat around wall box removing any lumps of plaster and sanding away any uneven plaster.

3. Connect wires to appropriate terminals on rear of switch assembly including the earth wire to the earth terminal on the metal back plate.



4. Use fixing screws provided to fix switch assembly onto wall box. Tighten screws evenly a little at a time until just tight enough to prevent movement of the back plate. Do not over-tighten.



5. Pick up decorative front plate carefully and push into place, pressing gently on each side to ensure the front plate has engaged with the plastic clips on the switch assembly.



N.B. (If the decorative front plate needs to be removed at any time (eg. during decorating) place the tip of a screwdriver into one of the slots on either side of the product (adjacent to the wall) and gently rotate screwdriver until clip releases front plate taking care not to let the front plate fall onto floor.)