

# FITTING INSTRUCTIONS

## Bath Pop-Up Waste

### BEFORE YOU START

This product must be connected in accordance with UK Building Regulations. If you are in any doubt about these requirements, contact a qualified plumber.

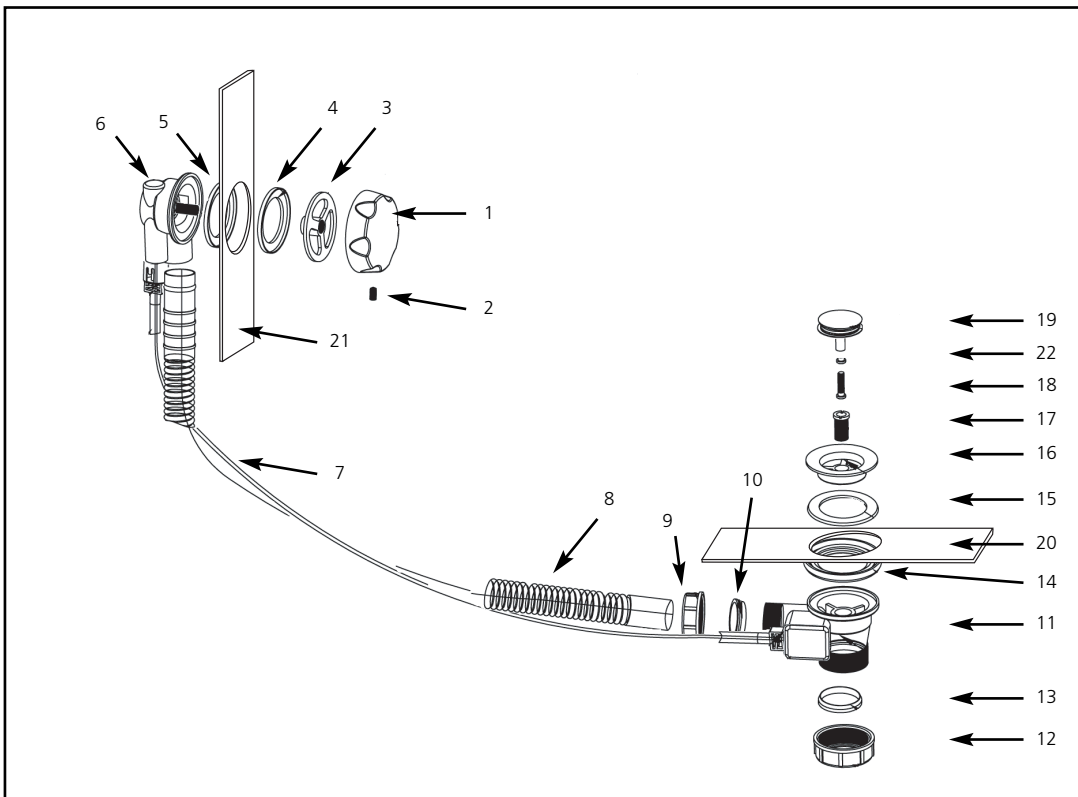
- Identify all components and check pack contents.
- It is advised to fit waste to bath BEFORE installation of the bath.

### INSTALLATION

- Insert Overflow Tube (8) to the Bath Overflow (6). It is advisable to apply a small bead of silicone sealant on the connection.
- Place Overflow Rubber Washer (5) onto the Bath Overflow (6).
- Place Overflow Washer (4) onto the Overflow Flange (3).
- Locate Bath Overflow (6) on outside of the Bath Overflow Hole (21). Tighten Overflow Flange (3) to the Bath Overflow (6). DO NOT OVERTIGHTEN. It is advisable to apply a small bead of silicone sealant between the Bath Overflow (6) and the Bath Overflow Hole (21).
- Secure another end of the Overflow Tube (8) to Waste Body (11) by tightening the Overflow Tube Nut (9). DO NOT OVERTIGHTEN. It is advisable to apply a small bead of silicone sealant on the connection.
- Place Waste Rubber Washer (14) onto the Waste Body (11) and locate it on underside of the Bath Waste Hole (20).
- Locate Washer (15) under the Waste Body Flange (15).
- Screw Adaptor (16) through the Waste Body Flange (15) to the Waste Body (11). DO NOT OVERTIGHTEN. It is advisable to apply a small bead of silicone sealant between the Waste Body (11) and the Bath Waste Hole (20).
- Insert the Waste Cover (19) to the Waste Body (11) through Adaptor (16).
- Place Handle (1) onto Overflow Flange (3) and secure it by tightening the Screw (2). DO NOT OVERTIGHTEN.
- By turning the Handle (1) to check the movement of the Waste Cover (19). The Waste Cover (19) may need adjustment on the Waste Cover Screw (18) to ensure the flow of water out of the bath.

### AFTER CARE

To maintain the appearance of this fitting, ensure it is cleaned only using a clean soft damp cloth. A solution of warm water and mild liquid detergent may be used where necessary and then rinsed thoroughly. Abrasive cleaners or acidic cleaners MUST NOT BE USED under any circumstances. Avoid contact with solvents.



ITEM	DESCRIPTION	QTY
1	HANDLE	1
2	SCREW	1
3	OVERFLOW FLANGE	1
4	OVERFLOW WASHER	1
5	OVERFLOW RUBBER WASHER	2
6	BATH OVERFLOW	1
7	STAINLESS STEEL SILK	1
8	OVERFLOW TUBE	1
9	OVERFLOW TUBE NUT	1
10	WASHER	1
11	WASTE BODY	1

ITEM	DESCRIPTION	QTY
12	WASTE BODY NUT	1
13	WASTE RUBBER WASHER	1
14	WASTE BODY WASHER	1
15	WASHER	1
16	WASTE BODY FLANGE	1
17	ADAPTOR	1
18	WASTE COVER SCREW	1
19	WASTE COVER	1
20	BATH WASTE HOLE	1
21	BATH OVERFLOW HOLE	1
22	SCREW NUT	1