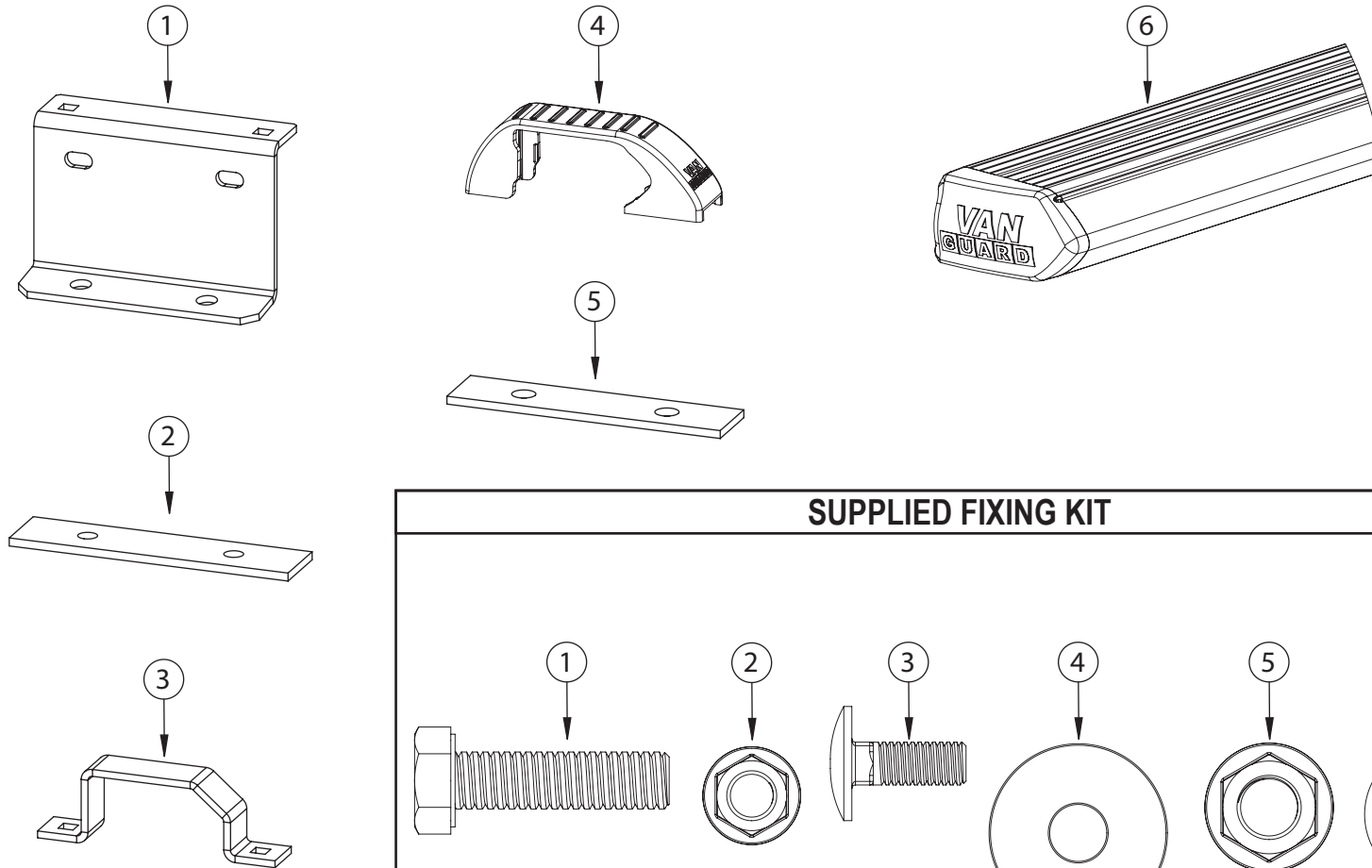


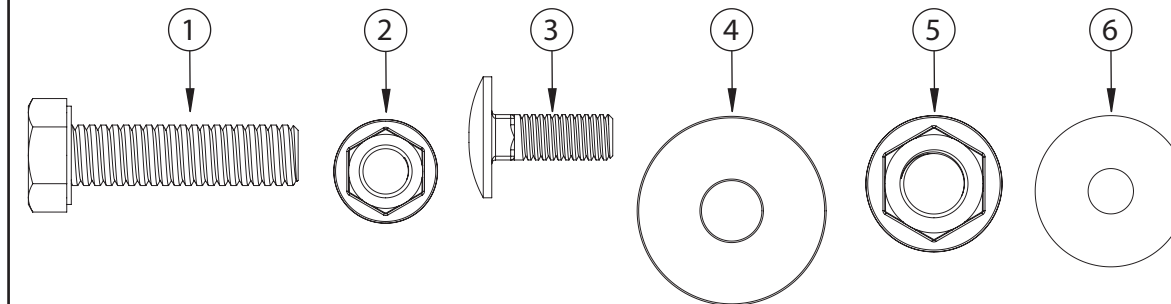
VG283-2 2 Heavy duty aluminium roof bars - Hyundai iLoad

SUPPLIED COMPONENTS



#	DESCRIPTION	QTY
1	ROOF BRACKET	4
2	N105 RUBBER PAD	8
3	TOP HAT	4
4	TOP HAT COVER	4
5	FIXING PLATE	4
6	ROOF BAR	2

SUPPLIED FIXING KIT



#	DESCRIPTION	QTY
1	M8x30 HEX BOLT	8
2	M6 SERRATED NUT	8
3	M6x16 COACH BOLT	8
4	M8 WASHER	8
5	M8 SERRATED NUT	8
6	RUBBER WASHER	8

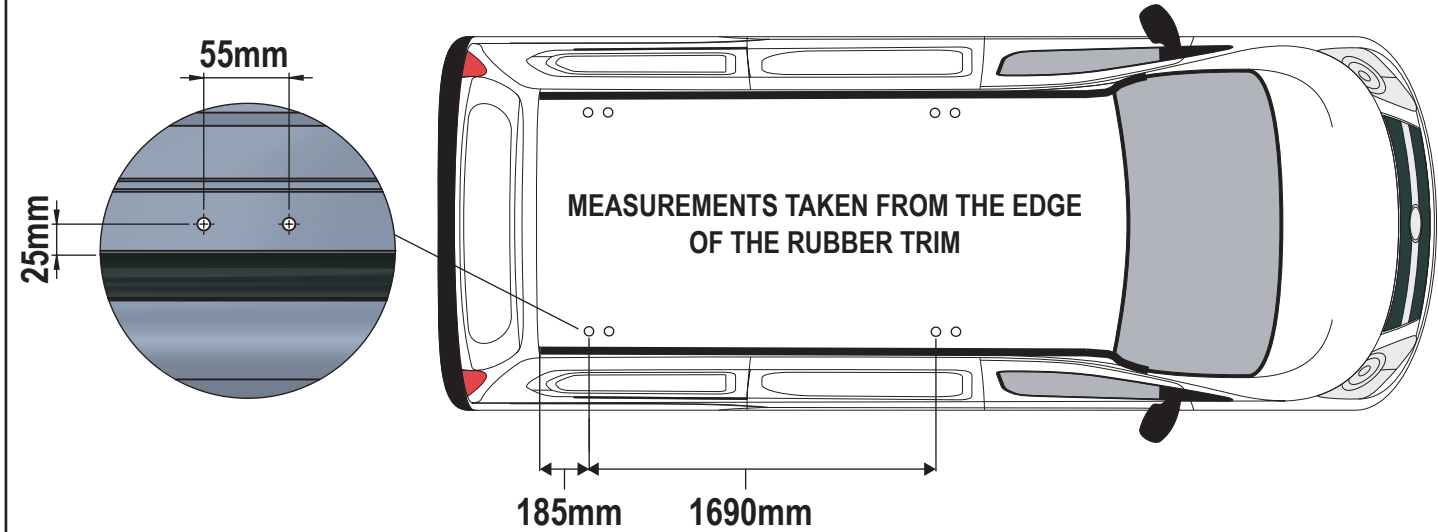
TOOLS REQUIRED: 10mm & 13mm (X2) SPANNER / RATCHET, DRILL, 8.2mm DRILL BIT

This FITTING INSTRUCTION is the property of VAN GUARD ACCESSORIES LTD. and must not be used for manufacturing purposes, copied nor communicated in any way to third parties without written permission from VAN GUARD ACCESSORIES LTD.
IN8095_A - IW - 03/05/2013

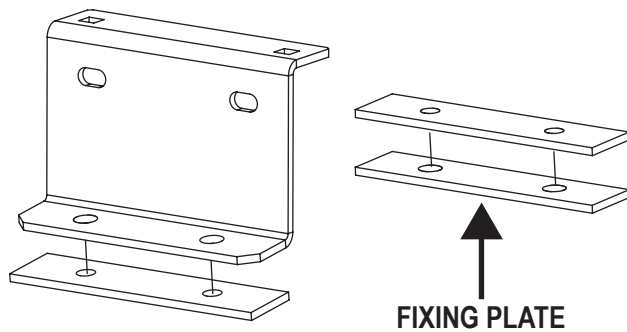
Van Guard Accessories Ltd
Fair Oak Close, Exeter Airport Business Park,
Exeter, Devon, EX5 2UL
www.van-guard.co.uk

! Whilst every effort has been made to ensure all our products can be safely fitted, if any product requires drilling in to the vehicle, we ask you to check that there is no possibility of causing damage when fitting. Changes to the van sometimes occur, so it's always good practice to check before drilling as we cannot accept responsibility for any damage caused by the fitting of any of our products. (When drilling always wear safety glasses.)

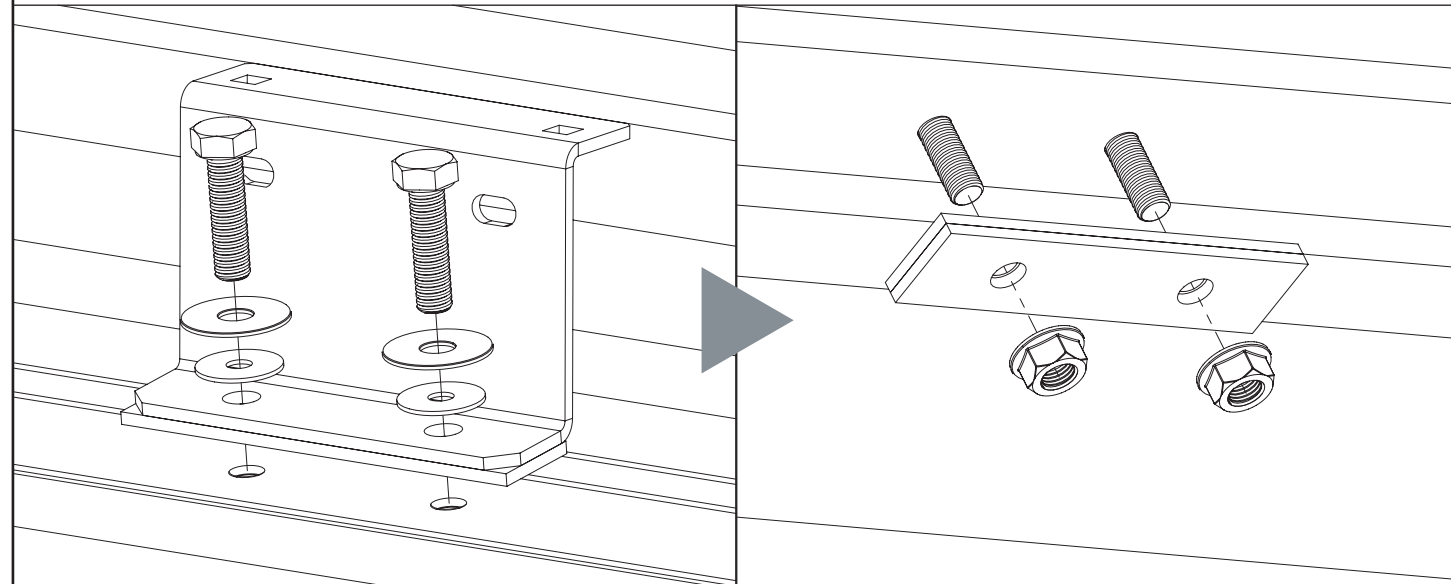
1 As there are no fixing points on the vehicle it's necessary to drill the roof to create the fixing points. Use the dimensions shown below to drill the fixing points $\text{Ø}8.2\text{mm}$. It is recommended to drill a pilot hole first.



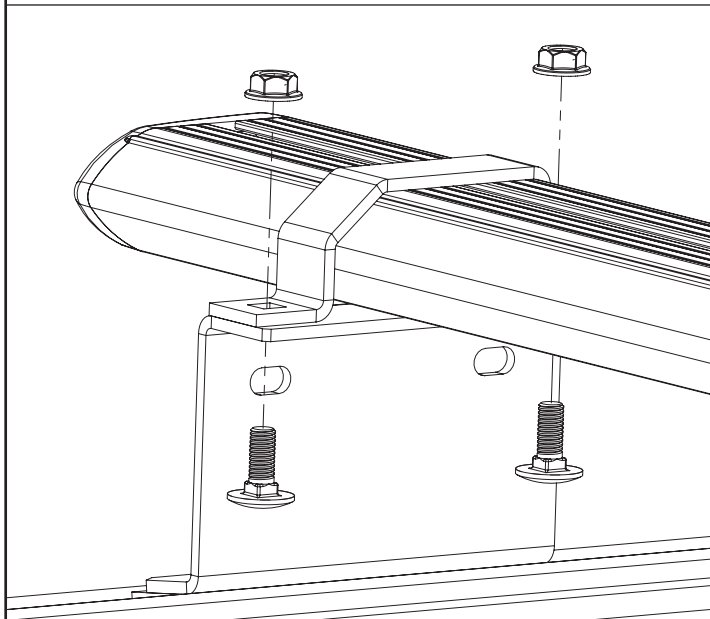
2 Stick rubber pads to the underside of the roof brackets and fixing plates.



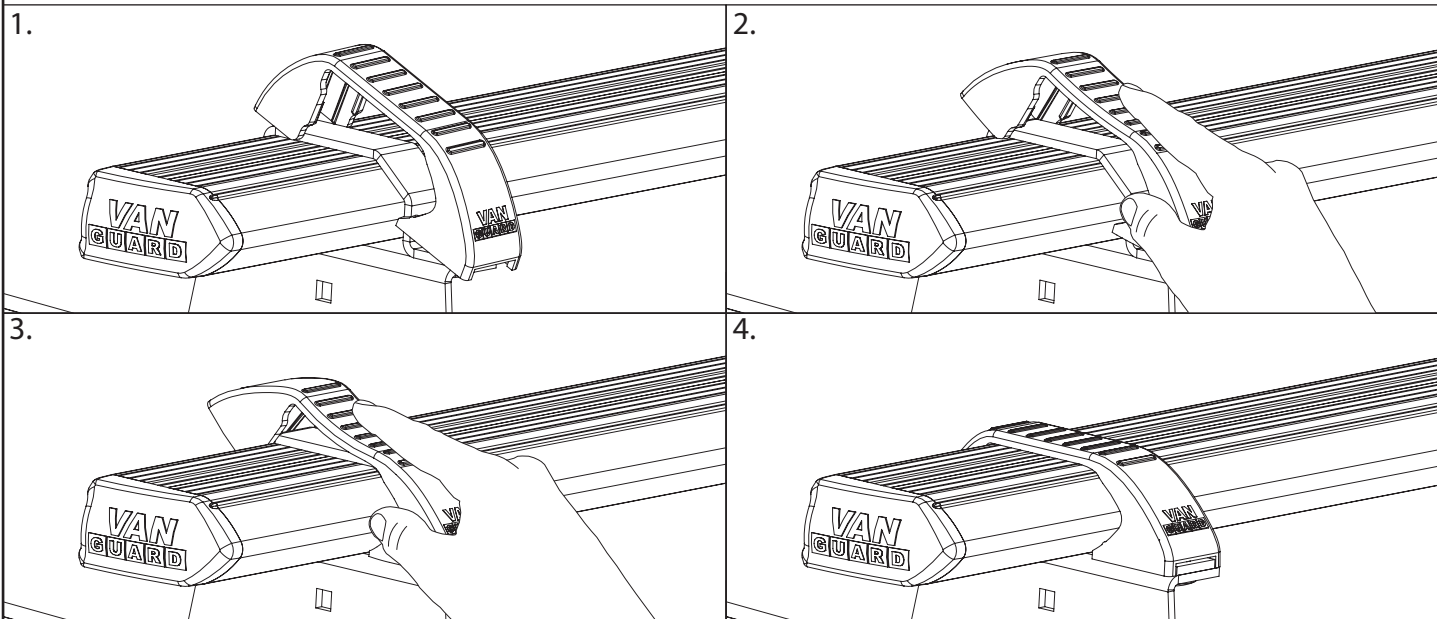
3 Loosely secure the roof brackets to the fixing points using M8x30 hex bolts, M8 washers & rubber washers, secure under the roof using fixing plates & M8 serrated nuts. Ensure that the top hat flange is facing inwards.



4 Place roof bars onto the roof brackets with the t-slot facing upwards, secure using top hat brackets, M6x16 coach bolts & M6 serrated nuts.



5 Flex the top hat covers over the top hat brackets into position as shown below. Ensure that the covers click into the front and rear of the top hat brackets.



6 Once in position tighten all M6 fixings to 8Nm and all M8 fixings to 12Nm. Periodically check all fixings.



**TIGHTEN
TO
8/12Nm**

NOTES:

Maximum load is 55kg per bar. Please check that the vehicle manufacturers load bearing capacity for the roof is not exceeded. (Refer to the vehicle handbook)

Periodically check all fixings.

Retain these instructions for future reference.

VAN GUARD