

MAKING MODERN LIVING POSSIBLE

*Danfoss*



## **RET2000 B/M/MS**

*Electronic digital thermostat with LCD*

**User Guide**

Danfoss Heating

**For a large print version of these instructions  
please call Marketing on 0845 121 7400.**

---

This product complies with the following EC Directives:  
Electro-Magnetic Compatibility Directive.  
(EMC) (2004/108/EC)  
Low Voltage Directive.  
(LVD) (2006/95/EC)



Danfoss can accept no responsibility for possible errors in catalogues, brochures, and other printed material. All trademarks in this material are property of the respective companies. Danfoss and the Danfoss logotype are trademarks of Danfoss A/S. All rights reserved.

*Thank you for buying a Danfoss product*

**GB**

*Danfoss*



## What is a room thermostat?

...an explanation for householders. A room thermostat simply switches the heating system on and off as necessary. It works by sensing the air temperature, switching on the heating when the air temperature falls below the thermostat setting, and switching it off once this set temperature has been reached.

Turning a room thermostat to a higher setting will not make the room heat up any faster. How quickly the room heats up depends on the design of the heating system, for example, the size of boiler and radiators.

Neither does the setting affect how quickly the room cools down. Turning a room thermostat to a lower setting will result in the room being controlled at a lower temperature, and saves energy.

The heating system will not work if a timeswitch or programmer has switched it off.

The way to set and use your room thermostat is to find the lowest temperature setting that you are comfortable with, and then leave it alone to do its job. The best way to do this is to set the room thermostat to a low temperature – say 18°C – and then turn it up by one degree each day until you are comfortable with the temperature. You won't have to adjust the thermostat further. Any adjustment above this setting will waste energy and cost you more money.

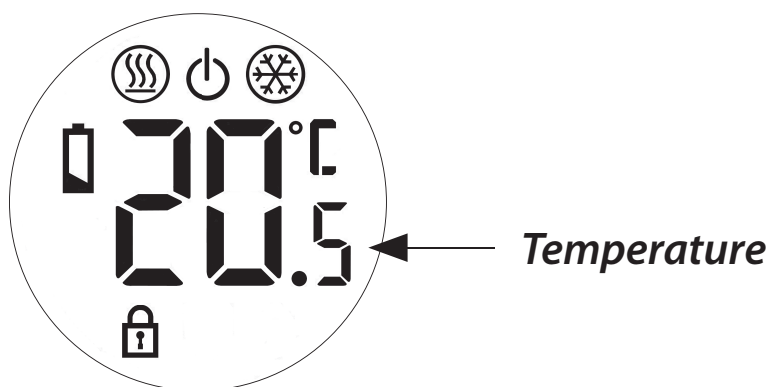
If your heating system is a boiler with radiators, there will usually be only one room thermostat to control the whole house. But you can have different temperatures in individual rooms by installing thermostatic radiator valves (TRVs) on individual radiators. If you don't have TRVs, you should choose a temperature that is reasonable for the whole house. If you do have TRVs, you can choose a slightly higher setting to make sure that even the coldest room is comfortable, then prevent any overheating in other rooms by adjusting the TRVs.






Room thermostats need a free flow of air to sense the temperature, so they must not be covered by curtains or blocked by furniture. Nearby electric fires, televisions, wall or table lamps may prevent the thermostat from working properly.

## Display

GB

The LCD displays actual room temperature until the  $\Lambda$  or V button is pressed more than once. To activate the unit's backlight press the  $\Lambda$  or V button once, if no further buttons are pressed the backlight will remain on for 6 seconds.



	Flame: shows when heating output is on (in heating mode only)
	Standby: shows when unit is manual set to standby
	Snowflake: shows when cooling output is on (in cooling mode only)
	Battery: flashes when battery is low (battery units only)
	Padlock: indicates keyboard lock has been set at installation

## Setting the temperature

---

Press either the  $\wedge$  or  $\vee$  buttons, the product backlight will come on.

**GB**

Press either the  $\wedge$  or  $\vee$  button again within 6 seconds, the display will flash with the current set temperature. While the display is flashing press the  $\wedge$  arrow to increase the set temperature to the required setting or the  $\vee$  arrow to decrease the set temperature.

If no buttons are pressed the display will return to actual temperature after 4 seconds and the backlight will go out after 6 seconds.

## **Thermostat status (heat mode only)**

---

**GB**

A flame symbol will be lit whenever the thermostat is calling for heat.

## **Thermostat status (cool mode only)**

---

A snowflake symbol will be lit whenever the thermostat is calling for cooling. If this is seen to flash, the thermostat output is delayed for a short period to prevent compressor damage.



## Thermostat standby

---

To place the thermostat into standby (off), press the V arrow twice to enter the temperature setting mode. When in heating mode press and hold the V arrow until the set temperature disappears and the standby symbol appears. In cooling mode press and hold the Λ arrow until the standby symbol appears.

When in standby the thermostat will have no control of the heating or cooling system.

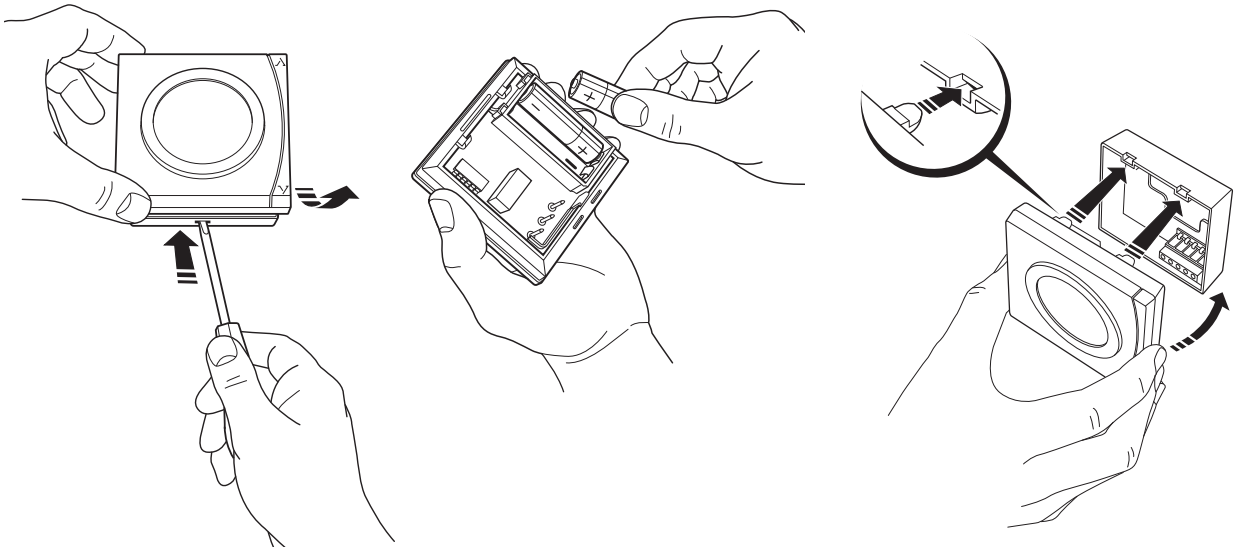
To exit standby press and hold the Λ arrow (V arrow in cooling mode) until the required set temperature is flashing on the display.

GB

## Low Battery Indications (RET2000B)

GB

For battery powered thermostat (RET2000B) when the batteries require replacement the battery low symbol will flash. Batteries should be replaced within 15 days, after which the thermostat will turn off the load it is controlling. If the power LED does not illuminate when the dial is turned the batteries may have expired and should be replaced immediately to avoid damage to the thermostat





*Danfoss*

**Danfoss Ltd**

Amphill Road  
Bedford MK42 9ER

Tel: 01234 364621

Fax: 01234 219705

Email: [ukheating@danfoss.com](mailto:ukheating@danfoss.com)

Website: [www.heating.danfoss.co.uk](http://www.heating.danfoss.co.uk)



Part No 44031v01 01/14

VURKR102