

**Locks - Installation Instructions**  
**Including Information on Performance & Suitability for use on Fire Doors**

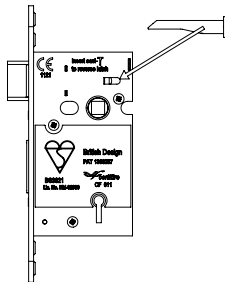
<b>CE</b>	Locke & Co BA22 8RT
1121 - XXXXX	08
EN 12209: 2003	Classification



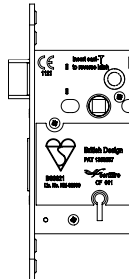
Item	CE Ref	Declaration of Performance (DoP)	EN 12209: 2003 Classification										Certifire Ref	Intumescent Requirements FD30 & FD60 Timber Doors	
			2	H	8	1	0	F	-	B	G	2			0
SFBAE5025NP/SL	AG0151	SL0005	2	H	8	1	0	F	-	B	G	2	0	CF5317	2mm Mono Ammonium Phosphate intumescent sheet required around the lock body, and behind the forend and strike plate. <b>OR</b> FS318 Intercalated Graphite intumescent sheet (0.8mm) can be used instead of the 2mm Mono Ammonium Phosphate,
SFBAE5030NP/SL	AG0151	SL0005	2	H	8	1	0	F	-	B	G	2	0	CF5317	
SFLSB5525PVD/SL	AG0129	SL0008	2	H	8	1	0	F	7	K	D	2	B	CF5317	
SFLSB5525SS/SL	AG0129	SL0008	2	H	8	1	0	F	7	K	D	2	B	CF5317	
SFLSB5530PVD/SL	AG0129	SL0008	2	H	8	1	0	F	7	K	D	2	B	CF5317	
SFLSB5530SS/SL	AG0129	SL0008	2	H	8	1	0	F	7	K	D	2	B	CF5317	
SFLDB5525PVD/SL	AG0130	SL0009	2	H	8	1	0	F	7	K	D	0	B	CF5317	
SFLDB5525SS/SL	AG0130	SL0009	2	H	8	1	0	F	7	K	D	0	B	CF5317	
SFLDB5530PVD/SL	AG0130	SL0009	2	H	8	1	0	F	7	K	D	0	B	CF5317	
SFLDB5530SS/SL	AG0130	SL0009	2	H	8	1	0	F	7	K	D	0	B	CF5317	
SFLSE5325EB/SL	AG0149	SL0004	2	H	8	1	0	F	1	K	D	2	A	CF5317	
SFLSE5325NP/SL	AG0149	SL0004	2	H	8	1	0	F	1	K	D	2	A	CF5317	
SFLSE5330EB/SL	AG0149	SL0004	2	H	8	1	0	F	1	K	D	2	A	CF5317	
SFLSE5330NP/SL	AG0149	SL0004	2	H	8	1	0	F	1	K	D	2	A	CF5317	
SFLDE5325EB/SL	AG0150	SL0003	2	H	8	1	0	F	1	K	D	0	A	CF5317	
SFLDE5325NP/SL	AG0150	SL0003	2	H	8	1	0	F	1	K	D	0	A	CF5317	
SFLDE5330EB/SL	AG0150	SL0003	2	H	8	1	0	F	1	K	D	0	A	CF5317	
SFLDE5330NP/SL	AG0150	SL0003	2	H	8	1	0	F	1	K	D	0	A	CF5317	
SFRDE8043JAP/SL	AG0155	SL0006	1	C	8	1	0	F	NPD	M	D	0	0	CF5317	no intumescent required
SFRSE8064JAP/SL	AG0153	SL0007	1	A	8	1	0	F	NPD	M	D	NPD	0	CF5317	no intumescent required

**NOTE -** These fitting instructions are for all mortice locks and latches.  
 Illustrations show sashlocks but same preparation and installation method is applicable to deadlocks and latches.

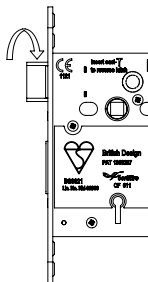
**Reversing Latch Bolt**  
**(Faceplate must be removed for Architectural locks)**



Insert 'T' ensuring rounded profile of 'T' matches the profile of the hole in the case.



Push the 'T' fully into the hole.



Turn latch to reverse and remove 'T'.

**Care & Maintenance**

A care and maintenance schedule should be carried out regularly.

Check that the lock and strike plate are correctly aligned and that the fixing screws are tight.

If lubrication is required, apply fine machine oil, or GT85 (or similar) PTFE lubricant to the latchbolt and deadbolt slots, operate a few times to work lubricant into the components, wiping away any excess. Ensure that any door or frame finishes are protected.

Declarations of Performance, and other information can be downloaded from the below website, and searching by DoP number:

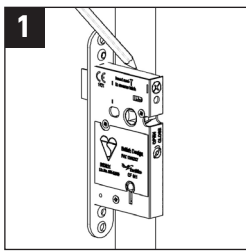
<http://www.free-instruction-manuals.com/index.html>

## Tools Required:

Pencil, drill, drill bits, mallet, chisel & posidrive screwdriver

### Preparation to the door:

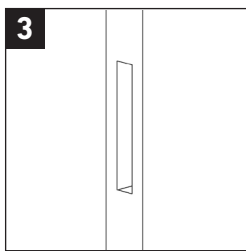
**Important note - Any mortice must always be aligned horizontally and vertically in order for all components to operate correctly. Misalignment of any single component can lead to damage and the breakdown of the complete doorset operation, thus invalidating any warranties.**



**1.** Position the lock body at the required height against the door edge. Using a pencil, mark the top and bottom of the lock on the door edge as illustrated above.

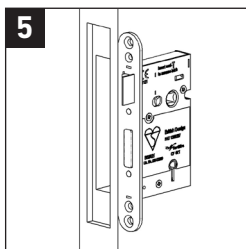
The required depth = lock body depth + fixed forend and loose faceplate thickness.  
Fitting to fire door, also allow for intumescent material.

Helpful hint - Mark the drill bit using adhesive tape or a suitable visible marker. The hole centres should be slightly less than the drill diameter so that the drilled holes overlap.

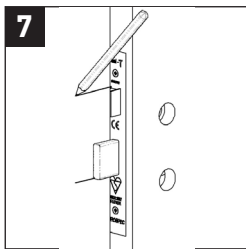


**3.** Chisel out the remaining wood to provide satisfactory clearance for the lock body (and intumescent material if fitting to a fire door). The mortice should be smooth and any shavings or swarf must be removed.

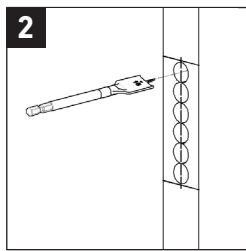
Note: If the latch bolt requires to be handed (the bevelled edge of latchbolt must face the door frame once fitted), please refer to "Reversing Latch Bolt" section which can be found before the care & maintenance section of these instructions.



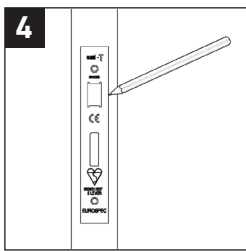
**5.** As per the illustration above, place the lock body against the door face, and in line with the lock mortice, make allowance for forend and faceplate (and intumescent if required) mark through the centre of the positions for Keyway/cylinder (Deadlock), or Keyway/Cylinder and spindle follower (Sashlock). Drill the holes accordingly. If additional drilling is required (i.e. bolt through fixing facility for levers), this should also be done at this time.



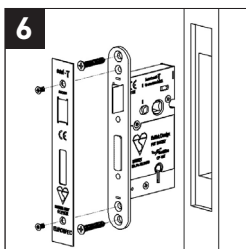
**7.** When lock is fitted, with door in the open position, turn the key to fully throw the deadbolt to "locked position". Gently close the door against the frame and mark on the door frame, the top edge of the latchbolt and the bottom edge of the deadbolt.



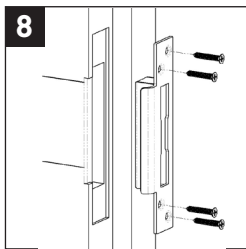
**2.** Between the lines for top and bottom of lock, mark a vertical guideline central to the door edge, to use as a guide for a series of holes to be drilled to the required depth.



**4.** Insert the lock body into the morticed hole. Place the loose faceplate over the fixed forend, temporarily screw the faceplate on and mark around the faceplate. Remove lock from door and chisel out a recess to accept the complete depth of forend and faceplate (plus intumescent material if fitting on a fire door). Ensure any swarf is removed from mortice.



**6.** Ensure the mortice is free of any swarf and insert the lock into the mortice. Pre drill the forend fixing holes for screws and secure the lock in place. Fit the loose faceplate. Check that the Key/Cylinder and Spindle fit within prepared holes and that they operate the lock correctly. Additional levers and escutcheons can be fitted at this time. Test the final fitting to ensure the latch and/or deadbolt operate correctly.



**8.** Continue these marks to the inside edge of the door frame rebate. Mark an additional horizontal line approx. 2mm above the top line, this line represents the top inside edge of the aperture within the striker. To determine the horizontal position of the striker, retract the deadbolt and close the door. Applying a little pressure to the door, mark a line on the inside rebate face against the flat face of the latchbolt to determine the outside striking edge of the striker aperture. With the final position established, mark around the dustbox or box striker and drill the mortice, using the same method as for the lock case and forend. If fitting to fire door, allow for intumescent material.