

Safety & Operating Instructions


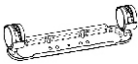
OIL FILLED RADIATOR


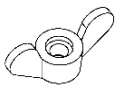
NDB-1C-20S (9fins)

These instructions are for your safety. Please read through them thoroughly before use and retain for future reference.

Parts Supplied

Fittings Supplied


Ref	Description	Illustration	Qty
A	Main body		1
B	wheel+base plate assembly		2

Ref	Description	Illustration	Qty
C	U-shape bolt		2
D	Wing nut		2

Before You Start

- Check the pack and make sure you have all of the parts listed above.
- This appliance is designed for use as a supplementary heat source, it is not intended to be the main source of heat.

Safety Warnings

1.  **WARNING** : In order to avoid overheating, do not cover the heater.
2. This product is not a toy. It should not be used by children or infirm persons without supervision.
3. Disconnect from mains when not in use or when moving or cleaning.
4. Do not operate the appliance with a damaged cord or plug. If the supply cord is damaged, it must be

replaced by the manufacturer or its service agent or a similarly qualified person in order to avoid a hazard.

5. The heater is hot when in use .To avoid burns, do not let bare skin touch hot surface.
6. Do not immerse cord, plug or any part of the appliance in water or any other liquid.
7. Do not use the heater in dusty environments or where flammable vapours are present (e.g. in a workshop or garage).
8. Do not place the heater on or near any other source of heat.
9. Do not cover the heater. A fire may occur if the heater is covered with or touches flammable material, including curtains, drapes, bedding etc. when in operation. **KEEP THE HEATER AWAY FROM SUCH MATERIALS.**
10. Do not use the heater in the immediate surroundings of bathtubs, showers, washing stands or swimming pools.
11. Do not locate the heater below a socket-outlet.
12. Do not let the mains lead hang over the edge of the table or work surface or touch hot surfaces.
13. Do not use outdoors.
14. Do not use the appliance for other than its intended use. This appliance is intended for household use only.
15. Do not misuse the cord or pull the cable to disconnect it from the outlet. Instead, grasp the plug and pull it to disconnect.
16. Do not attempt to repair, disassemble or modify the appliance. There are no user-serviceable parts inside.
17. Do not insert or allow foreign objects to enter

the ventilation or exhaust openings as this may cause an electric shock , fire or damage to the appliance.

18. Do not use this heater with a programmer, timer or any other device that switches the heater on automatically, since a fire risk exists if the heater is covered or positioned incorrectly.
19. This heater is filled with a precise quantity of special oil. Repairs requiring opening of the oil container are only to be made by the manufacturer or his service agent who should be contacted if there is an oil leak.
20. When scrapping the heater, follow the regulations concerning the disposal of oil. Do not dispose of the heater in household waste and recycle the heater where local facilities exist for electrical goods and oil.
21. This appliance can be used by children aged from 8 years and above and persons with reduced physical, sensory or mental capabilities or lack of experience and knowledge if they have been given supervision or instruction concerning use of the appliance in a safe way and understand the hazards involved.
22. Children shall not play with the appliance
23. Cleaning and user maintenance shall not be made by children without supervision
24. Children of less than 3 years should be kept away unless continuously supervised. Children aged from 3 years and less than 8 years shall only switch on/off the appliance provided that it has been placed or installed in its intended

normal operating position and they have been given supervision or instruction concerning use of the appliance in a safe way and understand the hazards involved. Children aged from 3 years and less than 8 years shall not plug in, regulate and clean the appliance or perform user maintenance.

25. Some parts of this product can become very hot and cause burns. Particular attention has to be given where children and vulnerable people are present.

Assembly Instruction

1. Turn the radiator upside-down on a scratch-free and stable surface to prevent damage to the paint finish or your floor surfacing (see Fig 1).
2. Fit the wheel+baseplate assemblies onto the radiator by placing the U-shaped bolts between the outermost fins on each side of the radiator (see Fig.2 - 4).
3. Securely fasten the wheel+baseplate assemblies onto the radiator by screwing the wing nuts onto the bolts (see Fig. 5).

IMPORTANT: Please fit the wheel+baseplate assemblies as shown above. Other positions may affect the stability of the unit (see Fig.6 for correct orientation).

WARNING: Only operate the radiator in normal upright position with wheels assemblies attached to the bottom as shown in Fig. 6 (wheels on the bottom, controls on the top), any other position could create a hazardous situation

If you are in any doubt about installing this product, consult a qualified electrician.

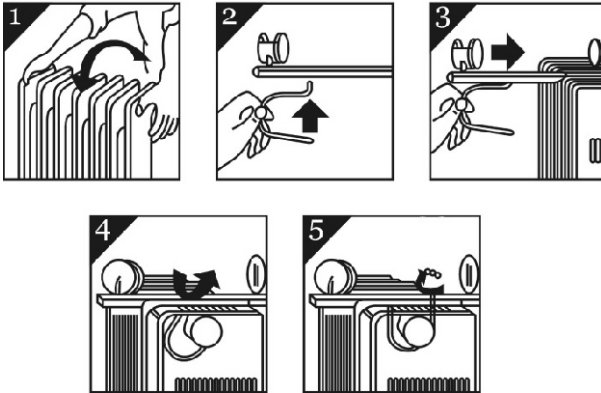


Fig. 6

Operating Instructions

1. Place the product in an upright position on a flat, steady, stable, heat-resistant surface. Make sure there is nothing flammable or heat sensitive within 1 metre (40 inches). Operating the product in any other position could cause a hazard.
2. Insert the plug into a suitable wall outlet after turning the thermostat knob counter-clockwise to the minimum position and setting the power switch to "off" for OFF. The heater is suitable for operation on an electricity supply having the same voltage as that show on its rating label. Always ensure the mains cable is fully unwound then the product is in use.
3. Press the power switch to "I" (Minimum heating), or "II" (Medium heating) or "I+II" (Maximum heating).
4. Turn the thermostat knob clockwise to maximum position. When the room temperature rises to a comfortable level, slowly turn thermostat counter-clockwise until the indicator light just goes out. To adjust the room temperature turn the thermostat clockwise to raise the temperature, or counter-clockwise to lower it. Thus the heater will attempt to keep the room temperature at the desired level.
5. To turn off the heater, set the power switch to "off" position, and the power indicator light will turn off. Unplug the product from the electrical outlet when it is left unattended or is not in use.

NOTE: This heater is fitted with a non-adjustable internal thermostat that regulates the heaters operating temperature and prevents overheating. Therefore it is normal for the heater to automatically switch on and off during normal use. The non-adjustable internal thermostat works independently and does not affect the thermostat setting on the control panel

Safety Control (Tip over switch)

This product is fitted with a safety tip-over switch to ensure it can only be operated in the correct upright position. If the product falls down or is installed upside down, due to the function of tip over switch, it will stop working automatically. And when the product is put to the right upside position, it will start working as normal again.

Plug Replacement

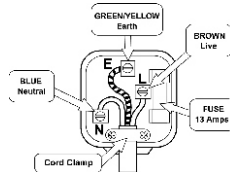
- This appliance is supplied with a BS1363 3 pin plug fitted with a 13 Amp fuse. Should the fuse require replacement, it must be replaced with a fuse rated at 13 Amp and approved to BS1362.
- In the event the mains plug has to be removed/replaced for any reason, please note:

The wires in the mains lead on this appliance are coloured in accordance with the following code:

Green and Yellow – Earth

Blue – Neutral

Brown – Live



THIS APPLIANCE MUST BE EARTHED

As the colours may not correspond with the markings identifying the terminals in your plug proceed as follows.

- The green and yellow wire must be connected to the terminal in the plug, which is marked with the letter E or with the earth symbol \perp or coloured green and yellow.
- The blue wire must be connected to the terminal marked N or coloured black.
- The brown wire must be connected to the terminal marked L or coloured red.

Important - any cut off plug should be disposed of safely to prevent hazard. There is a danger of electric shock if a cut off plug is inserted into a socket outlet.

Care and Cleaning

21. The electric heater should be cleaned regularly.

22. Disconnect electricity supply and allow radiator to cool, wipe with a soft damp cloth.

Do not use detergent or abrasives.

23. Do not scrape the surfaces with sharp hard tools.

Technical Specifications

Voltage: AC230-240V~ 50 Hz.

Power: 2000W

Conformity with Directives

- Conforms with relevant European Directives.



Environmental Protection

- Waste electrical products should not be disposed of with household waste. Please recycle where facilities exist. Check with your Local Authority or retailer for recycling advice.
- When scrapping the heater, follow the regulations concerning the disposal of oil.

