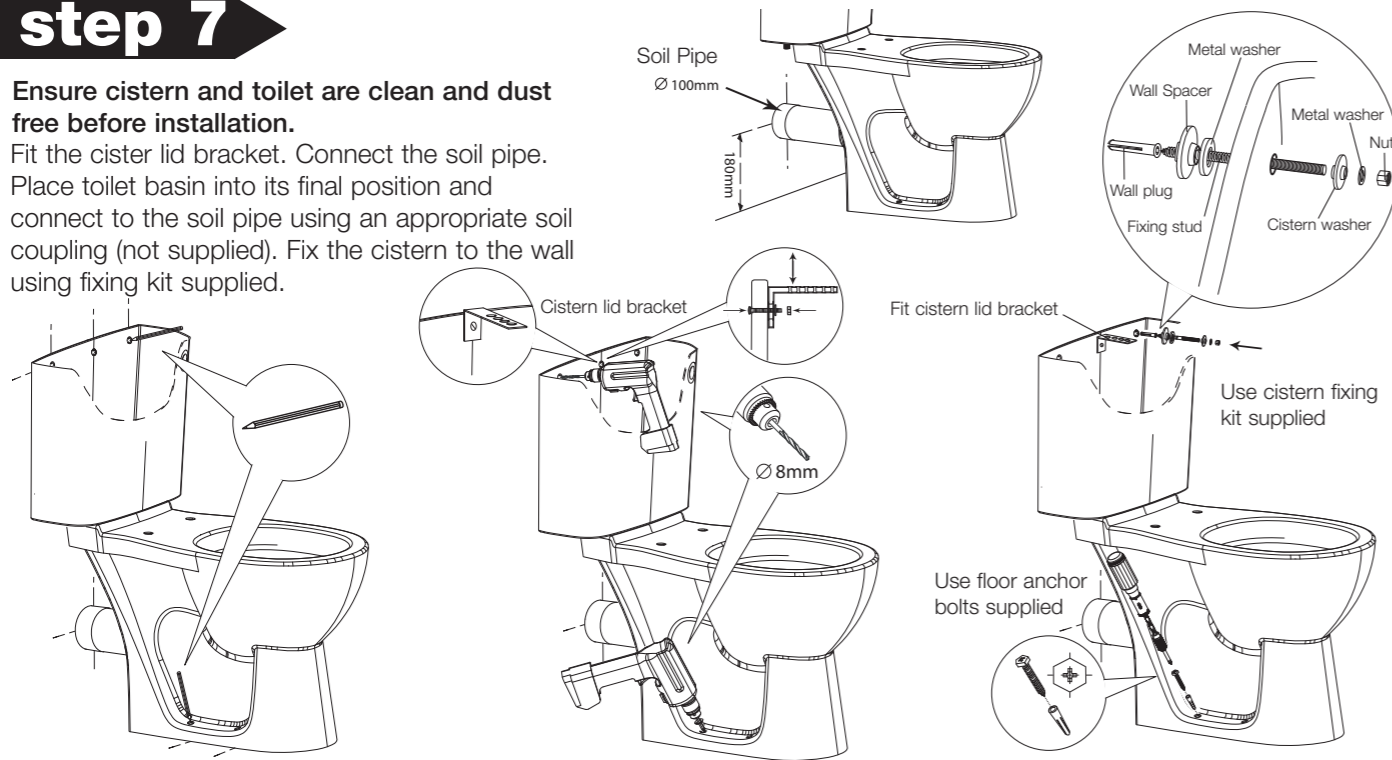


Installing the toilet and connecting water supply

step 7

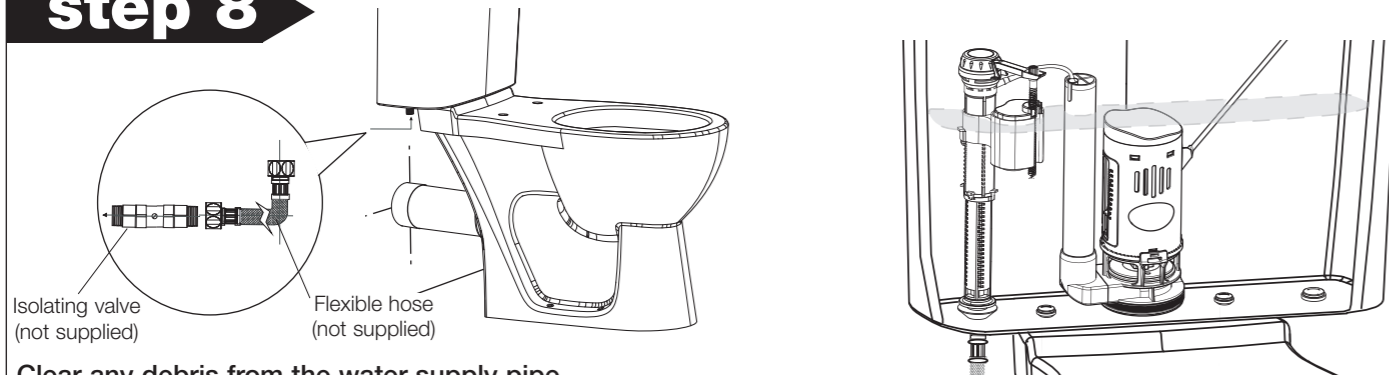
Ensure cistern and toilet are clean and dust free before installation.

Fit the cister lid bracket. Connect the soil pipe. Place toilet basin into its final position and connect to the soil pipe using an appropriate soil coupling (not supplied). Fix the cistern to the wall using fixing kit supplied.



Fix the toilet to the floor. Use a plastic drill guide to protect the ceramic. For concrete floor installation use a suitable 8mm drill bit for drilling into the floor. Use 4mm to 4.5mm drill for wood floor installation. Install floor 10mm anchor bolts and cover caps. **Do not over tighten the fixings as this can damage or break the ceramic.**

step 8

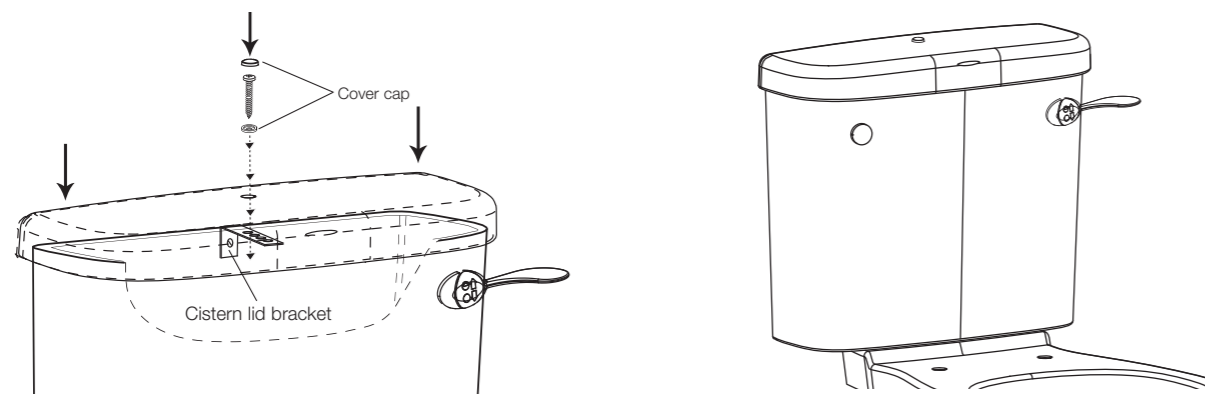


Clear any debris from the water supply pipe.

Connect the flexible hose and isolating valve to the threaded base of the fill valve and turn on the water supply. Check for any leaks. Check the water in the cistern is the correct level. To make further adjustment see step 2 and 3. Test the operation of the flush valve. The volume of the flush maybe adjusted using the sliders on the side of the flush valve body see step 4.

step 9

Fit the cistern lid into place using the fixings supplied. Ensure the lid is securely connected to the cistern bracket.



AKWMediCare Limited, Pointon Way, Hampton Lovett, Droitwich Spa, WR9 0LR
Tel. +44(0) 1905 823 298 - Fax. +44 (0) 1905 823 297 - www.akw-medicare.co.uk



AKW MediCare
PARTNERS IN CARE

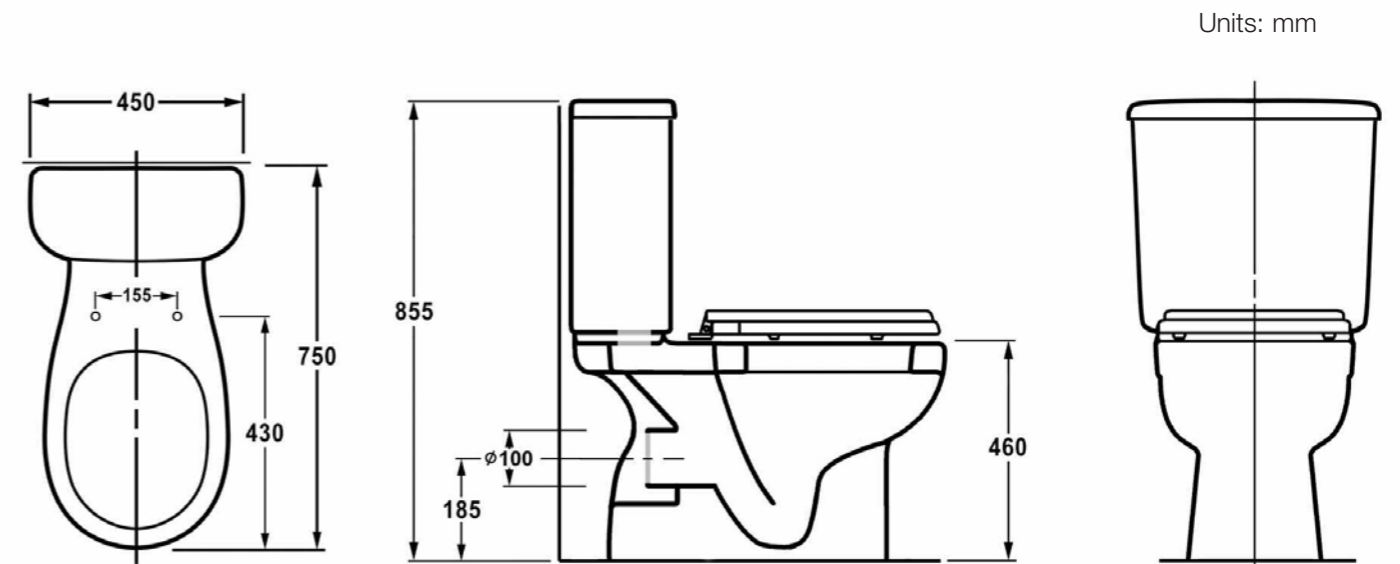


Ceramic Toilet Installation Instructions



READ ALL INSTRUCTIONS CAREFULLY BEFORE INSTALLATION AND LEAVE WITH END USER.

Dimensions



NOTES

Observe all local plumbing and building codes.
Shut off water supply.
Seat post holes are on 155mm centres.
Soil Pipe is Ø100mm.
Ceramics can break or chip if the bolts or nuts are over-tightened, or carelessly handled.

Carefully inspect the toilet and cistern for any sign of damage prior to installation.

Tools and Materials Required (not supplied)

Adjustable wrench
Metal file
Tape measure
Pipe cutter
Builders level
Hacksaw
Putty knife
Screwdriver
Soil pipe coupling
Flexible hose
Isolation valve (toilet shut-off water supply)



Flexible hoses are recommended to connect the supply line to the fill valve.
If using a rigid connection, take care not to apply side forces to the bottom of the fill valve.
Ensure an isolation valve is fitted to the water supply before installation.
Make sure there is no debris in the tank before fitting the flush valve.



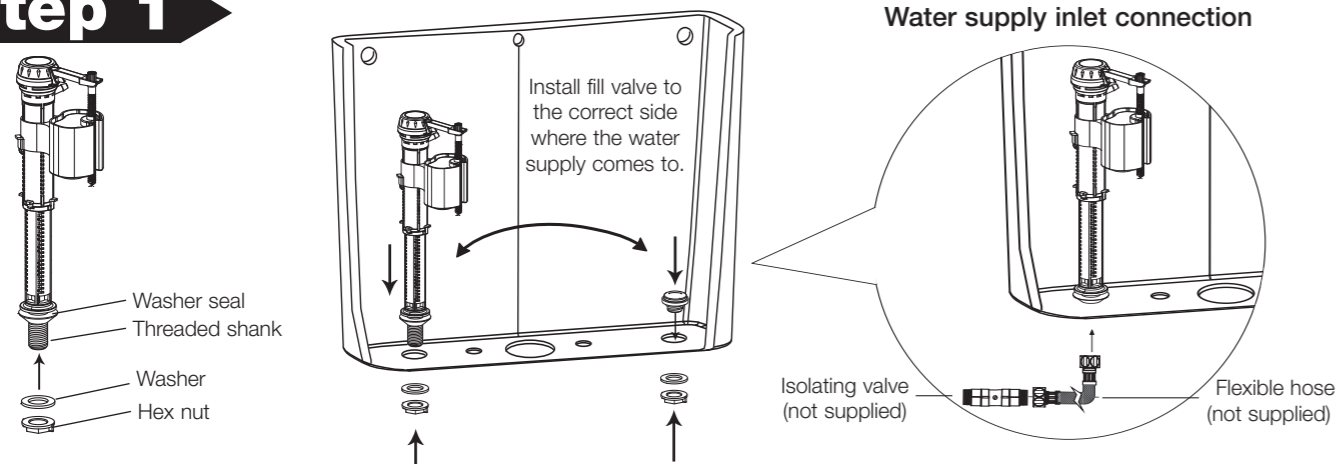
Do not overtighten floor anchor bolts as this can damage the ceramic.



Do not use white cement or high lime content cements to install this toilet. The expansion of cement due to a rise in temperature may cause the toilet basin to crack or cause damage. This will void the warranty.

Fitting the fill valve to the toilet cistern

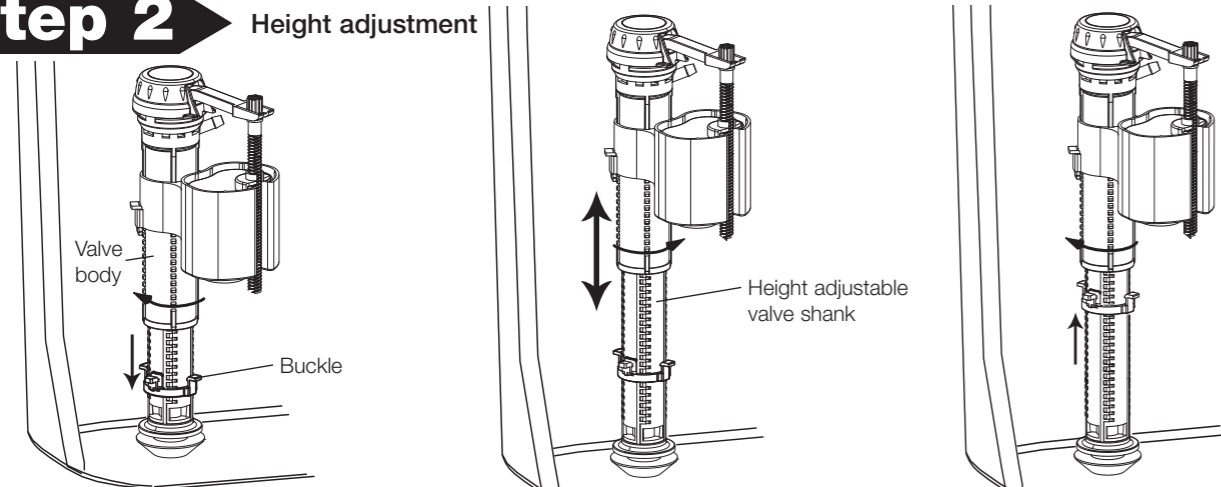
step 1



Ensure cistern is clean and dust free before installation. Unscrew the hexagon nut and washer from the threaded shank. Ensure the washer seal is attached to the threaded shank. Insert the fill valve into the cistern inlet hole vertically. Connect the washer and nut to the fill valve. Do not over-tighten but ensure fill valve is securely fixed, vertically positioned and will not interfere with the other mechanisms. Do not connect flexible hose or water supply until in its final position.

step 2

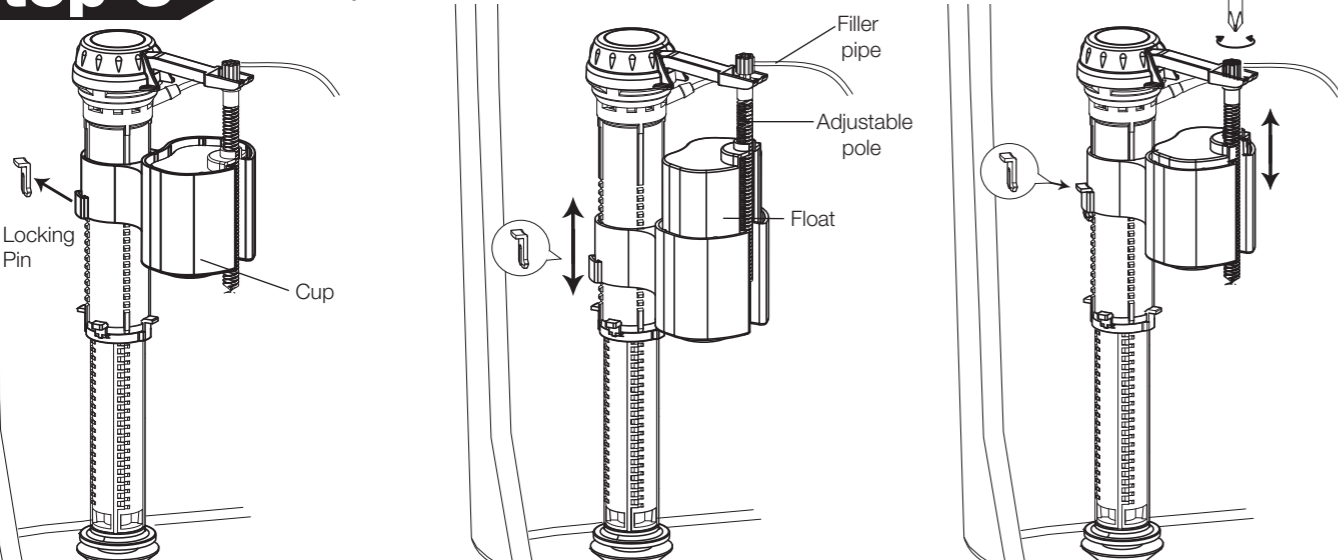
Height adjustment



Unclip and push down the buckle. Lightly unscrew the adjustable body 1/4 turn anti-clockwise by hand and lift it up or down to an appropriate height between 20mm (8") and 300mm (12"). Turn the body clockwise until it clicks back into position and then lock the buckle back into its position to secure the valve body.

step 3

Float adjustment

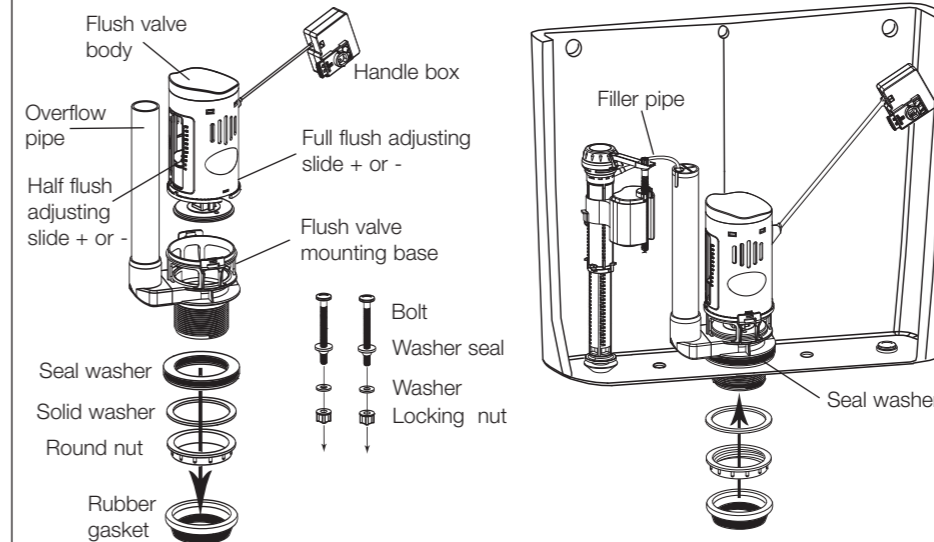


Take out the locking pin, adjust the height of the cup up or down depending on the water level required in the tank then re-insert the pin to lock in place. Note: the working water level is determined by the height of the top of the cup. Screw the adjustable pole to move the float up or down to the correct position so that the valve closes when the water is level with the top of the cup. Note that the non thread side of the adjustable pole should be facing outwards.

Fitting the flush valve and flush handle

step 4

Note: the flush valve can be unscrewed from the mounting base for cleaning and maintenance without needing to remove the cistern.



Unscrew the round nut from the valve and remove the solid washer. **Do not remove the seal washer.**

The flush volume can be adjusted using the full and half flush sliders. Set the flush volume controls to minimum, these can be adjusted after the cistern is connected to the water supply.

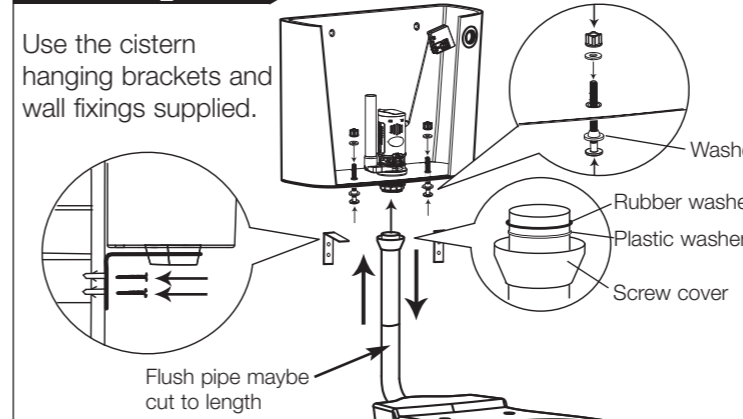
Insert flush valve body with the seal washer connected on the thread into the outlet of the cistern. Fit the solid washer and round nut. Push down on the valve body and securely tighten up the round nut onto the flush valve thread.

Clip the end of the filler pipe to the top of the overflow pipe so water flows into the overflow.

step 5

Low Level Flush Pipe Installation

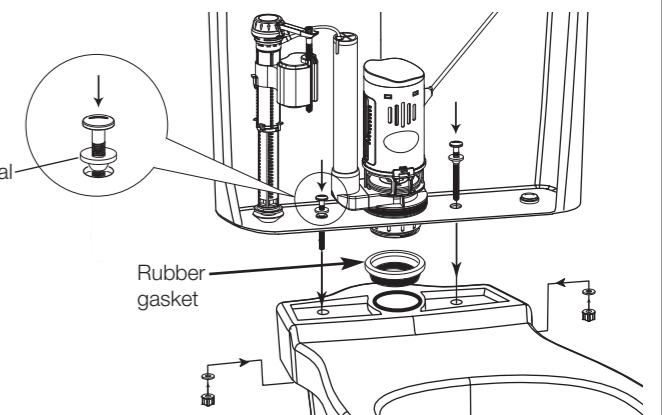
Use the cistern hanging brackets and wall fixings supplied.



For low level installation. Connect the flush pipe together ensuring washer seals are tight. Connect the screw cover onto the flush valve thread on the outlet part of the cistern. Use the connecting bolts and washers to seal the bottom of the cistern.

Note: the nuts and washers are on the inside of cistern. **Ensure the washer seal is fitted correctly.**

Close Coupled Installation

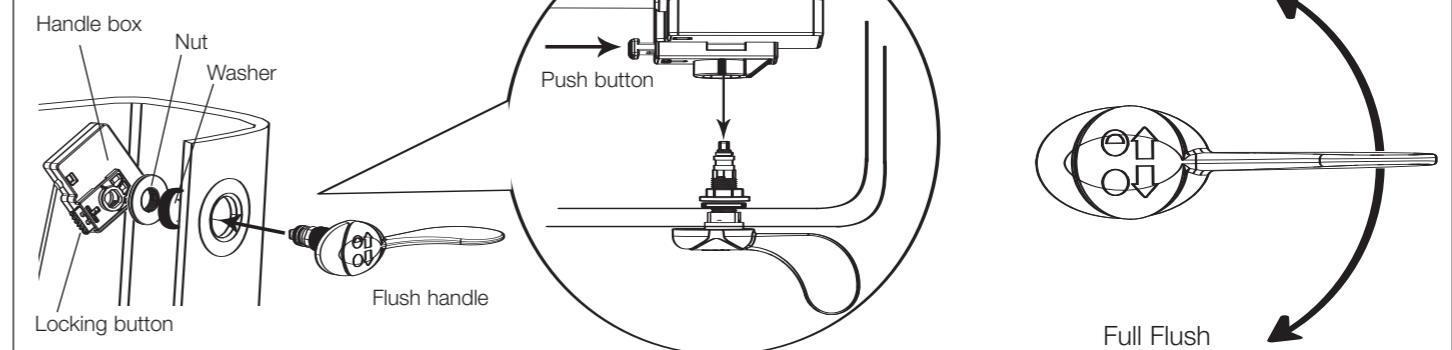


For close coupled installation

Place the large rubber gasket on the bottom of the thread between the cistern and basin. Carefully fit the cistern onto the toilet using the supplied connecting bolts and washers.

Do not overtighten. **Ensure the washer seal is fitted correctly.**

step 6



Un-assemble the flush handle removing the nut and the rubber washer.

Insert the handle rod into the hole in the cistern. Make sure the handle lever is the correct way up. Screw on the washer and nut until tight. Align the handle box behind the handle rod. Press the locking button and insert the handle rod in to the handle box and release the button. Check that the handle has clicked into the correct position and it has locked into place. **Note:** The handle can be installed on either side of the tank.